

**Saturday, SEPTEMBER 3, 2011**

**NEW SALE LOCATION at the farm, LONDON, KENTUCKY**

**3rd**  
**Limousin Production**  
**Sale**

**MASSEY**  
**LIMOUSIN**

# 3rd Limousin Production Sale

**NEW SALE LOCATION!!  
At The Farm, London, Kentucky**

**Saturday, September 3, 2011 • at 1:00 PM EST**



Joey with wife Melissa and daughter Makayla

## MASSEY LIMOUSIN

**Donnie & Barbara Massey**  
1253 Old Whitley Road  
London, Kentucky 40744  
606.864.6961 • cell: 606.682.2125

**Joey, Melissa & Makayla Massey**  
80 Sublimity School Road  
London, Kentucky 40744  
606.877.5571 • cell: 606.682.2126  
josephlimassey@yahoo.com

**SCHEDULE OF EVENTS ...**

**Friday, September 2, 2011**

Noon Sale cattle available for viewing  
6:00 p.m. Refreshments available

**Saturday, September 3, 2011**

8:00 a.m. Sale cattle available for viewing  
Noon Complementary beef lunch served  
**1 p.m. Massey Limousin Sale starts**

**SALE DAY PHONES ...**

*If you have any questions on the sale/cattle feel free to call any of us, it would be our pleasure to assist you with your purchases.*

Joey Massey.....606.682.2126  
Melissa Massey .....606.309.2265  
Donnie Massey .....606.682.2125  
Randy Ratliff.....615.330.2735

**DIRECTIONS ...**

**Address:** 80 Sublimity School Rd., London, KY  
**From I-75,** take Exit 38, London, KY, for KY Hwy. 192. Go East on KY-192 for 0.3 miles. Run Right on to Old Whitley Road/Sublimity School Road. Proceed for 1.5 miles (Continue straight, through the 4-way stop), turning left to stay on Sublimity School Rd. The farm is immediately on the left.

**ACCOMMODATIONS ...**

Hampton Inn North.....606.864.0011  
200 Alamo Dr., London, KY  
Baymont Inn.....606.877.1000  
2075 Hwy. 192 W, London, KY

**SALE MANAGEMENT ...**



(L#2845)

Randy Ratliff • cell: 615.330.2735  
615.255.8982 • fax: 615.255.8992  
PO Box 281677, Nashville, TN 37228  
sales@rrmktg.com • www.rrmktg.com

**SALE CONSULTANTS ...**

**Mark Smith, Grassroots Genetics....**515.229.5227  
**Bill Helton.....**256.962.0256

**AUCTIONEER ...** C.K. "Sonny" Booth

**TRUCKING ---** Will be available on site to haul any purchases out the day of the sale. To make prior arrangements feel free to call R & R Marketing Co. at 615.330.2735 and we will make your buying easy and accommodating.

**PAYMENT ---** Cattle must be paid for at the time of the sale. Unless prior arrangements are made with sale management at the time of the sale at 615.330.2735.

**ANNOUNCEMENTS ---** Announcements at the sale by the owners, auctioneers or sale management will take precedence over statements in the sale catalog.

**SALE ORDER & SUPPLEMENTAL INFORMATION ---** Sale order and supplement sheet information will be posted Friday, September 2, 2011 at www.RRMktg.com.

**TERMS & CONDITIONS ---** Terms of the sale are cash unless satisfactory credit arrangements have been made prior to the sale. A representative will be on hand sale day if your wishes are to insure your purchases. Please note: The sale manager is only an agent for the seller and has no responsibility other than those involved in conducting the sale. All persons who attend the sale do so at their own risk. Neither the sale manager nor Massey Limousin assume liability, legal or otherwise for, any accidents which may occur.

*Offering the finest in Lim-Flex  
& Purebred Limousin  
seed stock form the heart of the  
Massey Limousin program.*

- 17 Cow Calf Pairs
- 10 Fall Bred Cows
- 18 Fall Bred Heifers
- 7 Spring Bred Cows
- 2 Half interest Donors
- 1 Heifer Pregnancy
- 1 Pick of 4 Heifer Pregnancies
- 10 Fancy Open Show heifers & future replacements

**66  
LOTS**

**66 Lots selling as 83 head plus 27 embryos**

**1 CJLM 6854Y**

Lim-Flex (75) cow • 03.17.11 • CJLM 6854Y  
Homo Black • Double Polled

**DHVO DEUCE 132R**  
GPF BLAQUE RULON  
AMY JO DHAN 20L

**SSTO SADIE 6854S**  
JCL LODESTAR 27L  
THOMAS LUCY ROSE 9509

BLACK DIAMOND  
QUAIL RUN RAMONA BP  
BLACK CAT DHAN 152G  
GPF AMBER JO  
HUNTS HI-LITER 245G  
LOGAN'S CHEERLEADER 280G  
SITZ TRAVELER 8180  
THOMAS LUCY ROSE 4067

	CED	BW	WW	YW	MA	CEM	SC	ST	DOC	CW	RE	YG	MS	SMTI
EPDs	10	0.2	60	108	24	3	0.9	-	-	59	0.25	0.36	0.22	53

- Sired by the past National Champion Bull, DHVO Deuce 132R and out of a sale highlight in our 2010 production sale.
- 6854Y is out of the top selling cow in the Edwards Production sale, SSTO Sadie who sold for \$15,000 to Twin Willows farm.
- The combination of Deuce genetics on JCL Lodestar daughters has worked really well.
- 6854Y has exceptional EPD's and sells from the heart of our program.



SSTO Sadie 6845S, dam of Lot 1

**2 CJLM 903X**

Lim-Flex (50) cow • 09.10.10 • CJLM 903X  
Double Black • Double Polled

**MYTTY IN FOCUS**  
S A F FOCUS OF E R  
MYTTY COUNTESS 906

**LOGAN'S 903R**  
EXLR NEW GENERATION 071M  
EXAR BLACKBIRD 8364

S A F FAME  
G D A R FOREVER LADY 246  
SITZ ALLIANCE 6595  
BALDRIDGE COUNTESS 357  
AUTO BLACK DAKOTA 129J  
EXLR LUVLY 084F  
EXAR TRAVELER 5240  
R R ENVIOUS BLACKBIRD 9512

	CED	BW	WW	YW	MA	CEM	SC	ST	DOC	CW	RE	YG	MS	SMTI
EPDs	13	-2.4	52	103	26	6	0.1	-	15	19	-0.78	0.70	0.72	66

- This is a super MYTTY In Focus daughter.
- This female is beautiful profiling female that has the making of a super donor female.
- This female is big time and is a known daughter of SKLS 903R, the now deceased but leading daughter of EXLR New Generation 071M. This heifers offers breed leading pedigree
- The Lim-Flex females in our breed are some of the finest and this one is a prime example



SKLS 903R, dam of Lot 2

**3 CJLM 408X**

Lim-Flex (50) cow • 09.10.10 • CJLM 408X  
Black • Polled

**BR MIDLAND**  
TWIN VALLEY PRECISIONE161  
BR ROYAL LASS 7036-19

**LVLS 408H**  
LVLS POLLED JUSTICE 0601E  
LVLS MISS STABLIZER 1408E

GAR PRECISION 1680  
WCC BLACKCAP C9  
S A F NEUTRON  
S A F ROYAL LASS 7036  
LVLS POLLED BLACK JACK  
LVLS JENI 601V  
MAYS BLACK JET  
LVLS 408X

	CED	BW	WW	YW	MA	CEM	SC	ST	DOC	CW	RE	YG	MS	SMTI
EPDs	7	0.2	50	97	23	6	0.6	13	13	34	0.58	0.50	0.61	63

- This black and polled female is sired by BR Midland and out of a LVLS Polled Justice daughter.
- She has phenomenal EPD's highlighted by a 50 weaning and a 97 yearling EPD, a .61 for marbling and a SMTI of 63.
- She is moderate in her frame, soggy middle and sound on her feet and legs.
- This 50% Lim-Flex has tremendous potential and we think you will like what you see on sale day.
- 408X is a full sibling to MCBN Toccara Brown, a top seller from the 2nd Annual Massey sale now highlighting the Etherton Farms herd. She is also a full sibling to MCBN Tatianna Brown 718T that sold for \$15,000 and is now headlining the Riverdale Ranch, West, MS



MCBN Toccara Brown 720T, full sib to Lot 3.



*BOHI Titlelist 7050T,  
sire of Lot 4.*



*AUTO Tabitha 200T,  
dam of Lot 4.*



*CHR Trisha 111T, dam of Lot 5.*



*COLE Miss Blueprint 620S, dam of Lot 6.*

## 4 CJLM Tabitha 200X

PB Limousin (100/88.4) cow • 09.01.10 • CJLM 200X  
Double Polled • Double Black • NPF 1985183

**BOHI TITLELIST 7050T**  
AUTO DOLLAR GENERAL 122R  
CARROUSELS PINA COLADA

**AUTO TABITHA 200T**  
LESF ASPHALT 9N  
DAKOTA LADY

LVLS SECRET WEAPON 4408K  
AUTO KYRIA 232K  
AUTO BLACK DAKOTA 129J  
ELMW GINNIE P58G  
GPFF BLAQUE RULON  
GPFF EXTRA SWEET ELITE  
EXLR DAKOTA 353G  
CORL TEMPTRESS 42F

	CED	BW	WW	YW	MA	CEM	SC	ST	DOC	CW	RE	YG	MS	SMTI
EPDs	4	2.6	44	88	26	3	0.4	-	10	12	0.27	-0.02	-0.03	42
	P	P	P	P	P	P	P	-	P	P	P	P	P	

- Sired by our senior herd sire BOHI Titlelist and out of a tremendous LESF Asphalt 9N daughter.
- She is double black and double polled.
- 200X has a 26 milk EPD to accompany a great set of performance numbers.
- This female is big hipped, feminine fronted and made very well.

## 5 CJLM Trisha 111X

Lim-Flex (50/44.4) cow • 10.14.10 • CJLM 111X  
Homo Polled • Homo Black • LFF 1983741

**LH RODEMASTER 338R**  
JCL LODESTAR 27L  
VERMILION E BLACKBIRD9546

**CHR TRISHA 111T**  
EXLR NEO 614N  
CHR NEPAL 404N

HUNTS HI-LITER 245G  
LOGAN'S CHEERLEADER 280G  
VERMILION 31 STACLER 3491  
CH ENV BLACKBIRD C5941  
AUTO BLACK DAKOTA 129J  
GREENWAY MISSEMULOUS 717  
GPFF BLAQUE RULON  
KQ 8142H

	CED	BW	WW	YW	MA	CEM	SC	ST	DOC	CW	RE	YG	MS	SMTI
EPDs	9	1.2	56	106	26	4	0.7	-	15	43	-0.09	0.47	0.33	55
	P	30	20	15	13	P	P	-	P	P	P	P	P	

- Take a look at the EPD's of this female!
- Sired by LH Rodemaster and out of a nice Coyote Hills dam, this female has a 106 yearling EPD, a .33 for marbling and a 55 for maternal terminal index.
- 111X is double homozygous.
- The predictability of the female along with her phenotype and structure make this tremendous replacement female a asset to the most progressive programs.

## 6 ENGD 088X

PB Limousin (94/83.1) cow • 09.10.10 • ENGD 088X  
Double Polled • Double Black • NPF 1968001

**KYLD DAYTONA 730T**  
KRVN NASKAR 013N  
EXLR BLACKBIRD 7182R

**COLE MISS BLUEPRINT 620S**  
TNUH BLUE PRINT 245H  
COLE 54E

GPFF BLAQUE RULON  
WL JU JU GAL 149J  
EF MAIN STAY 541M  
EXLR BLACKBIRD 5109J  
WADDLES COBALT 3106  
TNUH MISS C245  
LKCC TOMAHAWKS TOUCHDOWN  
COLE 117A

	CED	BW	WW	YW	MA	CEM	SC	ST	DOC	CW	RE	YG	MS	SMTI
EPDs	11	-1.5	34	73	22	1	0.6	-	14	19	0.49	0.02	-0.08	37
	14	33	21	14	11	12	P	-	P	P	P	P	P	

- Double black and double polled.
- Sired by KYLD Daytona 730T and out of a TNUH Blueprint 245H dam.
- This female is big footed, heavy boned and fluid in her movement.
- 088X is easy fleshing, deep ribbed and will make a tremendous brood cow prospect.

**7 PBR5 270X**

Lim-Flex (50/44.9) cow • 03.08.10 • PBR5 270X  
Homo Polled • Homo Black • LFF 1960298

**WULFS USER FRIENDLY 524U**  
MISS SYES JUSTICE 224S  
PLATTEMERE DATABASE  
**SEDGWICKS GEORGINA 4792**  
SEDGWICKS GEORGINA 4796

WULFS RANSOM 3059R  
WULFS NASA 1212N  
WULFS NOBILITY 3059N  
ROMN JUSTICE  
MISS SYES FARMER 225P  
CONNEALY DATELINE  
PLATTEMERE REVA 109  
O C C BACKSTOP 888B  
SEDGWICKS GEORGINA 14

	CED	BW	WW	YW	MA	CEM	SC	ST	DOC	CW	RE	YG	MS	SMTI
EPDs	12	-2.3	39	84	29	8	0.6	-	-	35	-0.15	0.51	0.36	51
	16	35	29	17	13	11	11	-	-	18	16	16	16	

- Homozygous black and homozygous polled.
- Sired by SYES User Friendly is this 50% Lim-Flex female.
- 270X has a -2.3 birth EPD, a 29 for milk and a .36 marbling EPD.
- She is stoutly made, smooth in her shoulder and sound in her movement.



**8 PBR5 10X**

Lim-Flex (50/44.5) cow • 02.18.10 • PBR5 10X  
Homo Polled • Het Black • LFF 1960313

**WULFS TITUS 2149T**  
WULFS MEADOW GRASS 2149M  
HOMEACRES PLATINUM 723  
**HOMEACRES GILDA D50**  
HOMEACRES GILDA 978

WULFS REALTOR 1503R  
HUNT MR JOCK 44J  
WULFS LENA 1503L  
WULFS GOLIATH 2453G  
MISS WULFETTE 9062J  
G D A R OSCAR 711  
HOMEACRES HANA 103  
D F SLEEP TIGHT 5121  
OMEACRES GILDA 935

	CED	BW	WW	YW	MA	CEM	SC	ST	DOC	CW	RE	YG	MS	SMTI
EPDs	7	-1.0	45	84	20	0	0.3	-	13	31	-0.15	0.39	0.39	54
	17	35	29	19	12	16	13	-	P	20	18	18	18	

- Sired by Wulf's Titus is this 50% Lim-Flex female.
- She is homozygous polled and double black.
- 10X has a -1.0 birth EPD, a 84 for weaning EPD and a .39 for marbling.
- She is thick ended, deep ribbed and broody in her design.



*WULFS Titus 2149T, sire of Lot 8*

**9 MAGS Xuthus**

Lim-Flex (25/22.7) cow • 10.05.10 • MAGS 8768X  
Homo Polled • Homo Black • LFF 1977715

**SAV 004 PREDOMINANT 4438**  
S A V EMBLYNETTE 1182  
SUMMITCRESTHIGHPRIME 0H29  
**MAGS RAPHAELA**  
MAGS LADY ACE

SITZ TRAVELER 8180  
BOYD FOREVER LADY 8003  
SAF 598 BANDO 5175  
S A V EMBLYNETTE 7319  
GARDENS PRIME TIME  
SUMMITCREST MISSIE 2F55  
EXLR INTRIGUE 361G  
CHAZ MISS GRETA 7003G

	CED	BW	WW	YW	MA	CEM	SC	ST	DOC	CW	RE	YG	MS	SMTI
EPDs	7	-0.2	56	107	332	2	0.2	-	8	42	-0.51	0.75	0.69	66
	P	37	29	24	20	P	P	-	P	P	P	P	P	

- Double homozygous is this daughter of SAV Predominant 4438.
- This is a tremendous 25% Lim-Flex female.
- 8768X is a beautiful female that is feminine fronted, smooth in her shoulder and long in her design.
- She is easy in her condition, sound footed and moderate in her frame.



*SAV 004 Predominant 4438, sire of Lot 9*

# Heifer Pregnancies



BC 7022 Raven 7965, sire of Lot 10 heifer pregnancy.



BOHI Titlelist 7050T, sire of Lot 11 heifer pregnancy.



AUTO Rebeca 292S, dam of Lot 10 heifer pregnancy.



TUBB Diamond 081K, dam of Lot 11 heifer pregnancy.

## 10A HEIFER Pregnancy

37.5% Lim-Flex • Double Polled • Double Black • Due October 27, 2011.

## 10B HEIFER Pregnancy

37.5% Lim-Flex • Double Polled • Double Black • Due October 27, 2011.

## 10C HEIFER Pregnancy

37.5% Lim-Flex • Double Polled • Double Black • Due October 27, 2011.

## 10D HEIFER Pregnancy

37.5% Lim-Flex • Double Polled • Double Black • Due October 27, 2011.

C MARATHON 7022  
**BC 7022 RAVEN 7965**  
 O C C BLACKBIRD 796F

LESF ASPHALT 9N  
**AUTO REBECA 292S**  
 EXLR REBECA 1019P

OCC KIRBY 633K  
 GIBBET HILL MIGNONNE E37  
 O C C BONANZA 880B  
 O C C BLACKBIRD 779A  
 GPF BLAQUE RULON  
 GPF EXTRA SWEET ELITE  
 BR MIDLAND  
 EXLR REBECA 614H

	CED	BW	WW	YW	MA	CEM	SC	ST	DOC	CW	RE	YG	MS	SMTI
EPDs	7	0.6	44	93	22	1	0.3	-	6	17	-0.25	0.41	0.58	62

- Here is a great opportunity to purchase elite genetics from our program.
- These heifer calves are all sired by BC Raven and out of one of our leading donors, AUTO Rebeca 292S.
- These 37.5% Lim-Flex heifer calves will have tremendous EPD's and marketability.
- They will be homozygous black and homozygous polled.
- The maternal grand dam of this mating is the deceased, top selling donor EXLR Rebeca 1019P.
- You can buy with confidence in these proven genetics from the \$40,000 valued donor owned by Wies Limousin, Wellsville, MO and Pinegar Limousin, Springfield, MO

## 11 HEIFER Pregnancy

PB Limousin • Double Polled • Double Black • Due October 27, 2011.

AUTO DOLLAR GENERAL 122R  
**BOHI TITLELIST 7050T**  
 CARROUSELS PINA COLADA

BLACK DIAMOND  
**TUBB DIAMOND 081K**  
 TUBB ROOKIE 744G

LVLS SECRET WEAPON 4408K  
 AUTO KYRIA 232K  
 AUTO BLACK DAKOTA 129J  
 ELMW GINNIE P58G  
 CANE RIDGE BLACK DRAK  
 WULFS DIADEM 4260D  
 EXLR ROOKIE 217D  
 MISS M T 5591T

	CED	BW	WW	YW	MA	CEM	SC	ST	DOC	CW	RE	YG	MS	SMTI
EPDs	5	2.6	52	96	23	2	0.3	-	10	25	0.54	0.04	0.05	45

- This pregnancy is sired by BOHI Titlelest and out of TUBB Diamond 081K.
- This is a powerfull mating combining some of the most proven, sought after genetics available.
- AUTO Dollar General 122R and Carrouseles Pina Colada are just a couple of the tremendous individuals in this mating.
- The resulting mating will be double black and double polled, will have a 95 yearling EPD, a 23 for milk, and a REA of .55.

# Featured Bred Females and Donors

## 12 MAGS Tamra

Lim-Flex (50/45.0) cow • 03.02.07 • MAGS 3502T  
Homo Polled • Homo Black • LFF 1879227

**AUTO DOLLAR GENERAL 122R**  
LVLS SECRET WEAPON 4408K  
AUTO KYRIA 232K

**HA PATSY 1121**  
TWIN VALLEY PRECISIONE161  
HA PATSY 1033

LVLS FARMER 4G  
LVLS 408H  
AUTO HACKETT 702H  
WULFS HAPPINESS 8136H  
GAR PRECISION 1680  
WCC BLACKCAP C9  
G A R EXPECTATION 4915  
LLF SC PATSY TR 111

	CED	BW	WW	YW	MA	CEM	SC	ST	DOC	CW	RE	YG	MS	SMTI
EPDs	9	0.7	57	109	34	6	0.2	-	-	38	-0.29	0.61	0.67	67
	28	38	32	21	24	26	13	-	-	43	40	40	39	

- Selling half-interest with the option to double up.
- **Due sale time carrying an embryo (TC Aberdeen x MAGS Udele 1668U)**
- This tremendous donor female is homozygous black and homozygous polled.
- She is sired by AUTO Dollar General 122R and is a 50% Lim-Flex cow.
- 3502T has a .9 birth EPD, a 57 for weaning and a 109 for yearling EPD. That performance coupled with a .67 for marbling and a SMTI of 66.
- This female is deep in her fore and rear rib, square in her hip, super in her udder confirmation and sound in her structure.



EPD's of planned mating - Double Polled & Double Black - 50% Lim-Flex

	CED	BW	WW	YW	MA	CEM	SC	ST	DOC	CW	RE	YG	MS	SMTI
EPDs	9	0.4	58	106	33	1	-	-	11	26	0.08	0.36	0.39	59

## 13 PBRs Tainted Love 257T

Lim-Flex (50/45.4) cow • 04.10.07 • PBRs 257T  
Homo Polled • Het Black • LFF 1895810

**JCL LODESTAR 27L**  
HUNTS HI-LITER 245G  
LOGAN'S CHEERLEADER 280G

**SEDGWICKS PRIDE 7984**  
MC CUMBER 204 MR WIX 920  
SEDGWICKS PRIDE 7987

WADDLES COBALT 3106  
TNUH MISS C245  
COLE FIRST DOWN 46D  
TTCC CONFIDENCE MAKER  
MR WIX OF MC CUMBER 204  
MISS WIX 298 OF MC CUMBER  
O C C BACKSTOP 888B  
SEDGWICKS PRIDE 8904

	CED	BW	WW	YW	MA	CEM	SC	ST	DOC	CW	RE	YG	MS	SMTI
EPDs	13	-0.4	46	101	25	7	0.4	-	-	26	-0.54	0.55	0.44	55
	P	25	29	25	21	P	14	-	-	22	21	21	21	

- Selling half interest with the option double up and take all.
- PBRs Tainted Love 257T is double homozygous and is sired by JCL Lodestar 27L.
- She is a 50% Lim-Flex that has a 12 for calving ease, a 100 yearling EPD, 25 for milk and a .45 for marbling.
- This female is beautiful in her profile, level down her top and in her hip and youthful in her udder.
- 257T sells with a bull calf sired by BOHI Titlelist 7050T that is homozygous black and double polled.
- **LOT 13A - CJLM YOUNGQUIST 257Y** - Bull; Lim-Flex (75/66.7) Bull; Double Polled; Homo Black; 06.16.11; CJLM 257Y; LFM 1985193. Sired by BOHI Titlelist 7050T.



## 14 LH Resourceful 324R REFERENCE DAM

Lim-Flex (50/45.4) cow • 09.28.05 • LCHA 324R  
Homo Polled • Homo Black • LFF 1832685

**JCL LODESTAR 27L**  
HUNTS HI-LITER 245G  
LOGAN'S CHEERLEADER 280G

**VERMILION LASS 0035**  
CONNEALY DATELINE  
VERMILION LASS 8154

WADDLES COBALT 3106  
TNUH MISS C245  
COLE FIRST DOWN 46D  
TTCC CONFIDENCE MAKER  
D H D TRAVELER 6807  
EILA EILA OF CONANGA  
S A F FAME  
VERMILION LASS 5334

	CED	BW	WW	YW	MA	CEM	SC	ST	DOC	CW	RE	YG	MS	SMTI
EPDs	15	-2.0	46	97	17	9	0.4	-	-	37	-0.55	0.54	0.45	56
	29	38	31	26	28	28	15	-	-	23	22	22	22	

- **We are selling 6 embryos to the bull of the buyer's choice.**
- This is a tremendous 50% Lim-Flex donor sired by JCL Lodestar 27L.
- 324R has a balanced set of EPD's to go with a tremendous profile.
- This donor cow is homozygous black and homozygous polled and will be easy to mate for the buyer of these embryo's.
- She is the \$15,000 valued donor that topped the Brown Land & Cattle Co. Sale in 2010.



## Featured Bred Females and Donors



### 15 LVLS 3615 W

Lim-Flex (25/22.8) cow • 02.12.09 • LVLS 3615W  
Double Polled • Double Black • LFF 1940360

S A F FOCUS OF E R  
**MYTTY IN FOCUS**  
MYTTY COUNTESS 906  
  
LVLS 3615S  
LVLS NEW DESIGN 9109  
LVLS GABRIELLA 3615G

S A F FAME  
G D A R FOREVER LADY 246  
SITZ ALLIANCE 6595  
BALDRIDGE COUNTESS 357  
BON VIEW NEW DESIGN 878  
L V MISS PROMPTER 9109  
COLE FIRST DOWN 46D  
LVLS JENI 601V

	CED	BW	WW	YW	MA	CEM	SC	ST	DOC	CW	RE	YG	MS	SMTI
EPDs	12	-2.6	52	102	32	7	0.6	-	-	32	-0.58	0.71	0.76	68
	P	P	P	P	P	P	P	-	-	P	P	P	P	

- PE. 11.15.10 to 12.10.10 to BOHI Titlelist 7050T. PE. 12.15.10 to 3.11.11 to MAGS Why.
- Here is a tremendous double black and double polled female sired by MYTTY In Focus.
- This two year old is bred to calve to either BOHI Titlelist 7050T or MAGS Why.
- 3615W has a -2.6 birth EPD, a 101 for yearling, a 32 for milk & a trait leading .70 for marbling.
- This 25% Lim-Flex is deep and angular and will surely produce great ones.

## Pick of Three Bred Females



### 16A MAGS Speedy Gonzales

Lim-Flex (50/46.1) cow • 09.02.06 • MAGS 9436S  
Het Polled • Black • LFF 1873572

BR MIDLAND  
BR ROYAL LASS 7036-19  
  
ANLC MAGGIE  
WULFS JOHN HANCOCK 7048J  
MAY 2112M  
ANLC KATIE GIRL 0716K

GAR PRECISION 1680  
WCC BLACKCAP C9  
S A F NEUTRON  
S A F ROYAL LASS 7036  
WULFS GAGE 5158G  
MISS WULFETTE 7048G  
COLE FIRST DOWN 46D  
SOGF AMBER KRUG 264B

	CED	BW	WW	YW	MA	CEM	SC	ST	DOC	CW	RE	YG	MS	SMTI
EPDs	7	0.6	46	87	16	0	0.3	13	13	43	-0.14	0.53	0.61	62
	29	31	27	22	26	27	P	P	P	26	25	25	25	

- PE. 12.15.10 to 3.11.11 to MAGS Why.
- 9436S is a black and polled daughter of BR Midland that is exceptional any way you analyze her.
- This 50% Lim-Flex has balance EPDs, a great phenotype and a prominent pedigree.
- She sells with a heifer sired by DHVO Deuce 132R that is double black and double polled.
- This pair of cattle is a definite sale highlight. This Midland daughter is deep bodied, sound and has a .61 marbling EPD.

### 16AA CELL 0209X

Lim-Flex (75/67.6) cow • 09.05.10 • CELL 0209X  
Double Polled • Double Black • LFF 1971709

DHVO DEUCE 132R  
  
MAGS SPEEDY GONZALES

GPFF BLAQUE RULON  
AMY JO DHAN 20L  
BR MIDLAND  
ANLC MAGGIE MAY 2112M

	CED	BW	WW	YW	MA	CEM	SC	ST	DOC	CW	RE	YG	MS	SMTI
EPDs	8	0.8	57	99	18	-1	0.7	-	19	57	0.36	0.28	0.27	54
	20	32	23	18	14	19	P	-	P	P	P	P	P	



### 16B MAGS Snowflake

Lim-Flex (50/46.1) cow • 09.01.06 • MAGS 9432S  
Homo Polled • Black • LFF 1873570

BR MIDLAND  
BR ROYAL LASS 7036-19  
  
ANLC MAGGIE  
WULFS JOHN HANCOCK 7048J  
MAY 2112M  
ANLC KATIE GIRL 0716K

GAR PRECISION 1680  
WCC BLACKCAP C9  
S A F NEUTRON  
S A F ROYAL LASS 7036  
WULFS GAGE 5158G  
MISS WULFETTE 7048G  
COLE FIRST DOWN 46D  
SOGF AMBER KRUG 264B

	CED	BW	WW	YW	MA	CEM	SC	ST	DOC	CW	RE	YG	MS	SMTI
EPDs	6	0.7	46	88	17	0	0.3	13	13	26	-0.26	0.51	0.64	63
	P	P	P	P	P	P	P	P	P	P	P	P	P	

- Due 10.16.11 to Wulf's Titus 2149T
- 9432S is a homozygous polled 50% Lim-Flex female sired by BR Midland.
- This female is beautiful from the profile, level in her hip and very well balanced.
- 9432S has a .64 marbling EPD and scanned a 5.23 for marbling.
- She is deep in her flank, sound in her udder confirmation and level in her design.

# Featured Bred Females and Donors



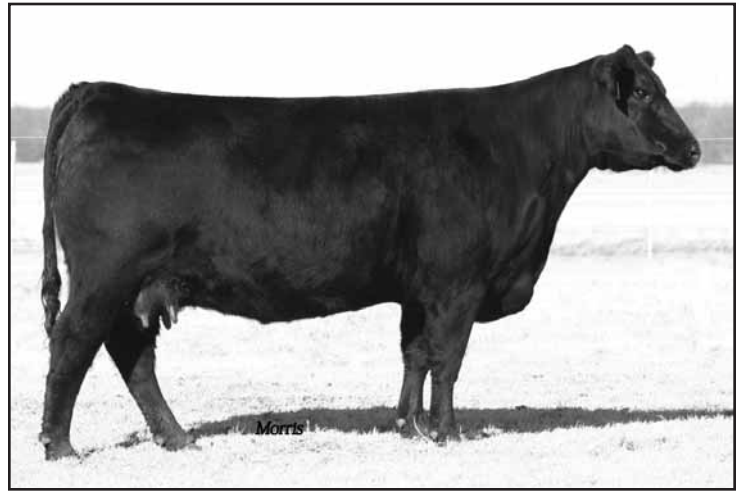
## 16C MAGS Steffi Graff

Lim-Flex (50/46.1) cow • 09.02.06 • MAGS 9438S  
Homo Polled • Black • LFF 1873574

**BR MIDLAND** TWIN VALLEY PRECISIONE161 GAR PRECISION 1680  
WCC BLACKCAP C9  
BR ROYAL LASS 7036-19 S A F NEUTRON  
S A F ROYAL LASS 7036  
WULFS JOHN HANCOCK 7048J WULFS GAGE 5158G  
**ANLC MAGGIE MAY 2112M** MISS WULFETTE 7048G  
ANLC KATIE GIRL 0716K COLE FIRST DOWN 46D  
SOGF AMBER KRUG 264B

	CED	BW	WW	YW	MA	CEM	SC	ST	DOC	CW	RE	YG	MS	SMTI
EPDs	6	0.7	47	88	17	0	0.3	13	13	22	-0.23	0.41	0.59	62
	P	29	26	22	26	P	P	P	P	44	40	40	40	

- Due 11.21.11 to Wulf's Titus 2149T.
- Homozygous polled, 50% Lim-Flex daughter of BR Midland.
- This female is very sound, fluid in her movement and big footed.
- She puts fleshing ability and structure in a very attractive package.
- This female promises to be an asset to any progressive program.



## Fall Bred Heifers

## 17 CJLM 108W

Lim-Flex (50/45.2) cow • 04.21.09 • CJLM 108W  
Homo Polled • Double Black • LFF 1962987

**MAGS TWAIN** AUTO DOLLAR GENERAL 122R LVLS SECRET WEAPON 4408K  
THOMAS PATRICIA 1911 AUTO KYRIA 232K  
GAR PRECISION 1680  
THOMAS PATRICIA 1176  
**MAGS ROARING TWENTIES** SUMMITCRESTHIGHPRIME 0H29 GARDENS PRIME TIME  
SUMMITCREST MISSIE 2F55  
MAGS LADY ACE EXLR INTRIGUE 361G  
CHAZ MISS GRETA 7003G

	CED	BW	WW	YW	MA	CEM	SC	ST	DOC	CW	RE	YG	MS	SMTI
EPDs	6	0.8	48	95	32	4	0.3	-	8	23	-0.26	0.42	0.51	59
	P	33	22	16	11	P	P	-	P	P	P	P	P	

- P.E. 11.10.10 to 4.01.11 to LVLS 3202U
- Homozygous polled and double black.
- Sired by MAGS Twain and out of MAGS Roaring Twenties.
- 108W has a 48 weaning and a 93 yearling EPD respectively, a 33 for milk and a 60 for SMTI.
- This 50% Lim-Flex replacement is sound, moderate and has a nice disposition.
- Fuchs Limousin in Texas purchased her full sister as a highlight lot in the 2011 Fort Worth Sale (pictured right).



CJLM 631W, full sister to Lot 17.

## 18 CJLM Paula 606W

Lim-Flex (50/46.3) cow • 04.11.09 • CJLM 606W  
Double Polled • Double Black • LFF 1959766

**BOHI FUTURE DIRECTION7015** C A FUTURE DIRECTION 5321 GAR PRECISION 1680  
R3 TRAVEL LADY K812 C A MISS POWER FIX 308  
A&B YUKON 7150  
WULF'S COUNT DOWN 9251C P A F TRAVEL LADY 7694  
**EXLR DARK ACCENT 4134H** MISS WOLFETTE 9051X  
AMBL DARK ACCENT 132V WRC PUNCH  
LOOKOUT BILLIE 220R

	CED	BW	WW	YW	MA	CEM	SC	ST	DOC	CW	RE	YG	MS	SMTI
EPDs	9	-2.0	34	72	28	2	0	-	-	-	-	-	-	-
	13	29	15	11	13	12	-	-	-	-	-	-	-	-

- A.I. 12.02.10 to EF Smack Down; P.E. 12.15.10 to 4.01.11 to LVLS 4202U
- Double black and double polled.
- 606W has a 9 calving ease EPD, a -1.8 birthweight EPD and a 28 for milk.
- Her dam is out of a Wulf's Count Down 9251C dam that goes back to WRC Punch.

## 19 CJLM Miss Daisy 598W

Lim-Flex (50/47.5) cow • 04.04.09 • CJLM 598W  
Double Polled • Double Black • LFF 1985606

**MAGS SCOTLAND** BR MIDLAND TWIN VALLEY PRECISIONE161  
MAGS MARQUEE BR ROYAL LASS 7036-19  
EXLR DAKOTA 353G  
EXAR NEW DESIGN 3903 MAGS JEWEL  
**AUTO KAY 642R** AUTO K 255N BON VIEW NEW DESIGN 1407  
RR MISS EMULOUS 6391  
SOGF SPECIAL K 247B  
AUTO BAY 251G

	CED	BW	WW	YW	MA	CEM	SC	ST	DOC	CW	RE	YG	MS	SMTI
EPDs	6	1.2	48	91	27	0	0.3	-	6	36	-0.20	0.50	0.57	61
	P	P	P	P	P	P	P	-	P	P	P	P	P	

- P.E. 11.10.10 to 4.01.11 to LVLS 3202U
- Sired by MAGS Scotland is this double polled and double black 50% Lim-Flex.
- 598W has exceptional balance to her EPD profile highlighted by a 28 milk, .59 marbling and a 61 SMTI.
- This female is long down her top, level in her hooks and pins and clean in her neck and throat.
- 598W combines great genetics in a solid package to make a great replacement female.

# Fall Bred Heifers

## 20 CJLM Bobbie 592W

Lim-Flex (50/43.7) cow • 03.24.09 • CJLM 592W  
Double Polled • Double Black • LFF 1965583

**BASIN FRANCHISE P142**  
C A FUTURE DIRECTION 5321  
BASIN CHLOE 812L  
GAR PRECISION 1680  
C A MISS POWER FIX 308  
GARDENS EXPEDITION  
BASIN CHLOE 6198

**AUTO TABBIE 235T**  
AUTO DOLLAR GENERAL 122R  
EXLR EXPRESSWAY 736J  
LVLS SECRET WEAPON 4408K  
AUTO KYRIA 232K  
EXLR POLLED RESOLVE 175G  
EXLR 593F

	CED	BW	WW	YW	MA	CEM	SC	ST	DOC	CW	RE	YG	MS	SMTI
EPDs	7	0.3	60	112	32	3	0.3	-	-	24	-0.27	0.50	0.72	70
	19	34	24	21	19	19	P	-	-	P	P	P	P	P

- A.I. 12.02.10 to DHVO Deuce; P.E. 12.15.10 to 4.01.11 to LVLS 4202U
- 50% Lim-Flex that is double black and double polled.
- Sired by Basin Franchise P142 out of a AUTO Dollar General 122R daughter.
- She has a 0.4 birth EPD, a 111 for yearling EPD, a 32 for milk and a .73 for marbling.
- Exceptional EPD's in a very nicely balanced female.

## 22 CJLM Just In Time 643W

Lim-Flex (50/45.1) cow • 05.05.09 • CJLM 643W  
Het Polled • Homo Black • LFF 1950800

**MAGS TWAIN**  
AUTO DOLLAR GENERAL 122R  
THOMAS PATRICIA 1911  
LVLS SECRET WEAPON 4408K  
AUTO KYRIA 232K  
GAR PRECISION 1680  
THOMAS PATRICIA 1176

**MAGS PHILANA**  
SIR WMS DESIGN 5762  
MAGS COURTNEY 524M  
GENETICS BY DESIGN 049  
STEVENSON ZARA 4576  
WULFS DAWSON 4421D  
CANE RIDGE COURTNEY 016D

	CED	BW	WW	YW	MA	CEM	SC	ST	DOC	CW	RE	YG	MS	SMTI
EPDs	5	0.8	47	97	34	2	0.2	-	9	24	-0.40	0.54	0.47	57
	P	28	20	14	9	P	P	-	P	P	P	P	P	P

- A.I. 12.02.10 to DHVO Deuce; P.E. 12.15.10 to 4.01.11 to LVLS 4202U
- Sired by MAGS Twain is this 50% Lim-Flex female.
- She combines a light birth weight EPD with good growth, exceptional milk and really good carcass numbers.
- 643W is deep in her flank, square in her hip and long and wide in her stride.

## 24 CJLM 622W

Lim-Flex (50/45.2) cow • 04.22.09 • CJLM 622W  
Double Polled • Double Black • LFF 1962862

**MAGS SCOTLAND**  
BR MIDLAND  
MAGS MARQUEE  
TWIN VALLEY PRECISIONE161  
BR ROYAL LASS 7036-19  
EXLR DAKOTA 353G  
MAGS JEWEL

**MAGS RIDE THE WILD SURF**  
EXAR NEW DESIGN 2997  
MAGS DESTINY 557M  
BON VIEW NEW DESIGN 1407  
LEACHMAN EVERGREEN 8020  
EXLR DAKOTA 353G  
CANE RIDGE DESTINY 356D

	CED	BW	WW	YW	MA	CEM	SC	ST	DOC	CW	RE	YG	MS	SMTI
EPDs	7	-0.6	44	86	20	3	0.4	-	-	27	-0.40	0.48	0.60	61
	P	32	21	15	11	P	P	-	-	P	P	P	P	P

- A.I. 11.30.10 to MAGS Twain; P.E. 12.15.10 to 4.01.11 to LVLS 4202U
- This 50% Lim-Flex is out of a nice EXAR New Design 2997 dam.
- She is double black and double polled.
- 622W has a -0.4 birth EPD, a 86 yearling EPD and a .60 for marbling.
- This big footed, long striding female is superb in her confirmation and should make a excellent replacement.

## 26 CJLM Madelyn 581W

Lim-Flex (63/55.8) cow • 03.11.09 • CJLM 581W  
Double Polled • Double Black • LFF 1959876

**MAGS SCOTLAND**  
BR MIDLAND  
MAGS MARQUEE  
TWIN VALLEY PRECISIONE161  
BR ROYAL LASS 7036-19  
EXLR DAKOTA 353G  
MAGS JEWEL

**GPFX TREASURE**  
MAGS REJUVENATOR  
GPFX KIANA  
GPFX BLAQUE RULON  
TWIN EAGLES LADY 180K  
JCL BLACK FOREST  
GPFX EXTRA SWEET NADINE

	CED	BW	WW	YW	MA	CEM	SC	ST	DOC	CW	RE	YG	MS	SMTI
EPDs	4	2.2	50	92	17	-1	0.4	-	9	34	0.02	0.37	0.39	56
	15	32	19	13	9	14	P	-	P	P	P	P	P	P

- A.I. 11.30.10 to MAGS Sasquatch; P.E. 12.15.10 to 4.01.11 to LVLS 4202U
- Sired by MAGS Scotland and out of a top selling female from our 2010 production sale, GPFX Treasure.
- 581W has a 50 weaning and a 92 yearling EPD respectively, a .39 for marbling and a 56 SMTI.
- She is moderate, easy fleshing and put together very well.

PG 10

## 21 CJLM Wendy 707W

PB Limousin (100/93.8) cow • 08.11.09 • CJLM 707W  
Double Polled • Black • NPF 1958739

**DVFC BLUE CHIP 234S**  
JCL LODESTAR 27L  
DBRO GONE FISHING 415G  
HUNTS HI-LITER 245G  
LOGAN'S CHEERLEADER 280G  
WULFS QUARTERBACK 4222B  
WFOA POLLED SARAH 654C  
WULFS DAWSON 4421D  
GV 8400 ROBYN 402D  
MASH UNDERWRITER  
153'S CHARMING CARBON189P

**CJLM WENDY 276S**  
MINE PHASED OUT 1547L  
MS XH JANDEE 775B

	CED	BW	WW	YW	MA	CEM	SC	ST	DOC	CW	RE	YG	MS	SMTI
EPDs	8	2.4	47	88	18	6	0.5	-	19	14	0.41	-0.08	-0.03	44
	13	30	16	11	09	12	P	-	P	P	P	P	P	P

- P.E. 11.10.10 to 4.01.11 to LVLS 3202U
- Here is a purebred female sired by DVFC Blue Chip 234S.
- She is black and double polled.
- 707W has a balanced set of EPD's.
- She is long sided, bold in her rib and stands square on all four corners.

## 23 CJLM Sand Dollar 559W

Lim-Flex (50/45.7) cow • 01.01.09 • CJLM 559W  
Homo Polled • Double Black • LFF 1985602

**MAGS SCOTLAND**  
BR MIDLAND  
MAGS MARQUEE  
TWIN VALLEY PRECISIONE161  
BR ROYAL LASS 7036-19  
EXLR DAKOTA 353G  
MAGS JEWEL

**BOHI SAND DOLLAR 6219S**  
G A R INTEGRITY  
ANLCO745K  
BON VIEW NEW DESIGN 1407  
G A R PRECISION 1019  
COLE FIRST DOWN 46D  
LAURA'S OPIUM

	CED	BW	WW	YW	MA	CEM	SC	ST	DOC	CW	RE	YG	MS	SMTI
EPDs	6	1.0	47	88	21	4	0.5	-	8	32	-0.27	0.51	0.66	64
	P	P	P	P	P	P	P	-	P	P	P	P	P	P

- Owned with Lone Oak Limousin, Magnolia, KY
- P.E. 11.10.10 to 4.01.11 to LVLS 3202U
- This is a really nice female sired by MAGS Scotland out of a G A R Integrity daughter.
- This Lim-Flex female has a 21 for milk, a .66 for marbling & a 64 maternal terminal index.
- 559W is a two-year-old that is put together really nice. Well balanced, long topped and easy on the eye.

## 25 CJLM Miss Chip 605W

Lim-Flex (50/45.7) cow • 04.11.09 • CJLM 605W  
Polled • Black • 1986995

**DVFC BLUE CHIP 234S**  
JCL LODESTAR 27L  
DBRO GONE FISHING 415G  
HUNTS HI-LITER 245G  
LOGAN'S CHEERLEADER 280G  
WULFS QUARTERBACK 4222B  
WFOA POLLED SARAH 654C

**FOUNDATION COW**

	CED	BW	WW	YW	MA	CEM	SC	ST	DOC	CW	RE	YG	MS	SMTI
EPDs	-	-	-	-	-	-	-	-	-	-	-	-	-	-

- P.E. 11.10.10 to 4.01.11 to LVLS 3202U
- Here is a daughter of the JCL Lodestar 27L son DVFC Blue Chip 234S
- The DVFC Blue Chip daughters are just now in production and are doing a top job and seem to be very maternal...after all why wouldn't they be ... he is a JCL Lodestar from the famed DBRO Gone Fishing 415G.

## 27 CJLM Lexie 678W

PB Limousin (100/91.8) cow • 05.30.09 • CJLM 678W  
Double Polled • Double Black • NPF 1934124

**DVFC BLUE CHIP 234S**  
JCL LODESTAR 27L  
DBRO GONE FISHING 415G  
HUNTS HI-LITER 245G  
LOGAN'S CHEERLEADER 280G  
WULFS QUARTERBACK 4222B  
WFOA POLLED SARAH 654C  
WULFS RAMBLER 8400X

**DVFC LUVLY PRIDE 920L**  
WULFS GUARDIAN 5074G  
EXLR LUVLY 081F  
WULFS EXAMPLE 5074E  
WULFS DAWSON 4421D  
AMBL LUVLY 340Y

	CED	BW	WW	YW	MA	CEM	SC	ST	DOC	CW	RE	YG	MS	SMTI
EPDs	8	2.1	47	92	20	5	0.3	-	24	20	0.62	-0.10	-0.09	42
	14	31	20	14	12	13	P	-	P	P	P	P	P	P

- P.E. 11.10.10 to 4.01.11 to LVLS 3202U
- 678W is a purebred female sired by DVFC Blue Chip 234S out of a nice producing Wulfs Guardian 5074G dam.
- Her maternal grand dam is the proven donor EXLR Luvly 081F.
- She has exceptional growth EPD's with a 20 on milk.
- 678W is long and wide down her top, thick ended and powerfully made.

## 28 CJLM Happiness 596W

Lim-Flex (75/66.1) cow • 04.01.09 • CJLM 596W  
Double Polled • Double Black • LFF 1959748

**JCL BLACK OKIE** AUTO BLACK DAKOTA 129J  
JCL MAYBERRY  
EXLR DAKOTA 353G  
DFLC JET SET BPC 34Y  
WADDLES CLEAR CHOICE 360  
JCL MADELINE  
**RFJL 613S** BR MIDLAND  
ANLC3194N  
TWIN VALLEY PRECISIONE161  
BR ROYAL LASS 7036-19  
AUTO BLACK DAKOTA 129J  
MISS WULFETTE 6077F

	CED	BW	WW	YW	MA	CEM	SC	ST	DOC	CW	RE	YG	MS	SMTI
EPDs	6	0.7	46	91	21	3	0.5	-	12	28	0.08	0.18	0.25	52
	P	32	21	15	13	P	P	-	P	P	P	P	P	

- P.E. 11.10.10 to 4.01.11 to LVLS 3202U
- 75% Lim-Flex female sired by JCL Black Okie.
- Double black and double polled.
- 0.9 birth weight EPD, a 91 yearling EPD and a .25 for marbling
- 596W is long and wide, smooth in her shoulder and productive in her look.

## 30 CJLM Kendra 105W

Lim-Flex (50/45.2) cow • 04.20.09 • CJLM 105W  
Double Polled • Double Black • LFF 1962867

**MAGS SCOTLAND** BR MIDLAND  
MAGS MARQUEE  
TWIN VALLEY PRECISIONE161  
BR ROYAL LASS 7036-19  
EXLR DAKOTA 353G  
MAGS JEWEL  
**MAGS RIDE THE WILD SURF** EXAR NEW DESIGN 2997  
MAGS DESTINY 557M  
BON VIEW NEW DESIGN 1407  
LEACHMAN EVERGREEN 8020  
EXLR DAKOTA 353G  
CANE RIDGE DESTINY 356D

	CED	BW	WW	YW	MA	CEM	SC	ST	DOC	CW	RE	YG	MS	SMTI
EPDs	7	0.6	47	90	20	3	0.4	-	-	27	-0.40	0.48	0.60	62
	P	32	21	15	11	P	P	-	-	P	P	P	P	

- P.E. 11.10.10 to 4.01.11 to LVLS 3202U
- Here is a deep and bold ribbed replacement female.
- This 50% Lim-Flex is maternal in her look, easy in her flesh and will be beautiful in production.
- She has a low birth weight EPD, good growth and a 62 SMTI.

## 32 CJLM Blue Holly 644W

PB Limousin (100/92.7) cow • 05.07.09 • CJLM 644W  
Double Polled • Double Black • NPF 1959750

**DVFC BLUE CHIP 234S** JCL LODESTAR 27L  
DBRO GONE FISHING 415G  
HUNTS HI-LITER 245G  
LOGAN'S CHEERLEADER 280G  
WULFS QUARTERBACK 4222B  
WFOA POLLED SARAH 654C  
WULFS GUARDIAN 5074G  
**CJLM HOLLY 180N** EXLR GUARDIAN 394K  
CJLM ENDLESS LOVE  
EXLR 061G  
JOHNSONS POLLED MAGNUM  
MS XH FUTURITY 817B

	CED	BW	WW	YW	MA	CEM	SC	ST	DOC	CW	RE	YG	MS	SMTI
EPDs	8	1.5	46	87	22	5	0.4	-	-	23	0.53	-0.06	-0.06	42
	13	31	16	11	9	12	P	-	-	P	P	P	P	

- A.I. 11.30.10 to Dr. DJ Analyst; P.E. 12.15.10 to 4.01.11 to LVLS 4202U
- 644W is a full sister in blood to 706W.
- She also is double black and double polled.
- She has a 1.7 birth EPD, a 46 for weaning EPD, a 22 for milk and a .51 REA.
- She is moderate, thick and blends nicely in her neck, shoulder and body.

## 34 CMIL Donna 647S

PB Limousin (100/90.3) cow • 09.10.06 • CMIL 647S  
Double Polled • Red • NPF 1881027

**TLIM CONTINENTAL CAD** LOGAN'S HYATT 308H  
TLIM BLACK MISSY  
CANE RIDGE POLLED WYATT  
DSLW BLACK EYED SUSAN  
CANE RIDGE POLLED STEELE  
MS SANDHILLS LEADER 380B  
**WULF'S DONNA 9050X** POLLED PACK LEADER 1182U  
MISS WOLFETTE 4059S  
YKCC ATLANTIC 397N  
MISS WOLFETTE 1150N  
GKF CANADIAN PACIFIC GKF3  
MISS WOLFETTE 8113K

	CED	BW	WW	YW	MA	CEM	SC	ST	DOC	CW	RE	YG	MS	SMTI
EPDs	7	2.6	32	63	26	6	0.3	14	13	-14	0.14	-0.17	-0.04	39
	P	36	27	20	20	P	P	P	P	P	P	P	P	

- P.E. 11.26.10 to 3.12.11 to MAGS Unmerciful
- 647S is out of one of the more prominent cows of her day, Wulf's Donna 9050X.
- She is long and level topped, smooth fronted and does a nice job in production.
- She is bred to have a black calf by MAGS Unmerciful.

## 29 CJLM Roxanne 668W

Lim-Flex (50/45.8) cow • 05.21.09 • CJLM 668W  
Double Polled • Double Black • LFF 1959764

**MAGS SCOTLAND** BR MIDLAND  
MAGS MARQUEE  
TWIN VALLEY PRECISIONE161  
BR ROYAL LASS 7036-19  
EXLR DAKOTA 353G  
MAGS JEWEL  
**MAGS ROAD HOME** BON VIEW NEW DESIGN 878  
VORD LUSCIOUS 101L  
B/R NEW DESIGN 036  
BON VIEW GAMMER 85  
LVLS FARMER 4G  
VORD JASMINE

	CED	BW	WW	YW	MA	CEM	SC	ST	DOC	CW	RE	YG	MS	SMTI
EPDs	7	1.1	45	86	25	5	0.3	-	11	26	-0.34	0.48	0.61	62
	16	33	22	16	11	15	P	-	P	P	P	P	P	

- P.E. 11.10.10 to 4.01.11 to LVLS 3202U
- This is a 50% Lim-Flex female you will appreciate sale day.
- Sired by MAGS Scotland and out of a Bon View New Design 878 daughter.
- This female is angular in her design, deep in her rib and one you could look at all day.
- Lock in on a tremendous replacement female with 668W.

## 31 CJLM Samantha 706W

PB Limousin (100/93.8) cow • 08.10.09 • CJLM 706W  
Double Polled • Double Black • LFF 1961040

**DVFC BLUE CHIP 234S** JCL LODESTAR 27L  
DBRO GONE FISHING 415G  
HUNTS HI-LITER 245G  
LOGAN'S CHEERLEADER 280G  
WULFS QUARTERBACK 4222B  
WFOA POLLED SARAH 654C  
WULFS GUARDIAN 5074G  
**CJLM SAMANTHA 168N** EXLR GUARDIAN 394K  
DGML MISS PRINCESS  
EXLR 061G  
LB COLD CASH 442N  
DAWALT MISS MOLLY

	CED	BW	WW	YW	MA	CEM	SC	ST	DOC	CW	RE	YG	MS	SMTI
EPDs	8	2.0	47	90	21	3	0.4	-	-	26	0.53	-0.05	-0.05	43
	13	31	17	11	09	12	P	-	-	P	P	P	P	

- P.E. 11.10.10 to 4.01.11 to LVLS 3202U
- Double polled and double black purebred female.
- 706W has a moderate birth EPD, 21 for milk and a REA of .51.
- She is long down her top, level in her hip and stands on a big foot.
- 706W is out of a nice producing Wulf's Guardian dam and we expect her to be just as good.

## 33 HAHK Well Known 006W

Lim-Flex (37/34.1) cow • 02.22.09 • HAHK 006W  
Homo Polled • Homo Black • LFF 1932705

**MAGS SCOTLAND** BR MIDLAND  
MAGS MARQUEE  
TWIN VALLEY PRECISIONE161  
BR ROYAL LASS 7036-19  
EXLR DAKOTA 353G  
MAGS JEWEL  
**FLLR TERRY** MYTTY IN FOCUS  
DIAMOND ROSE R040  
S A F FOCUS OF E R  
MYTTY COUNTESS 906  
TNUH BLUE PRINT 245H

	CED	BW	WW	YW	MA	CEM	SC	ST	DOC	CW	RE	YG	MS	SMTI
EPDs	7	-0.9	49	91	24	3	0.4	-	-	34	-0.13	0.47	0.62	63
	P	32	24	15	11	P	05	-	-	19	17	17	17	

- P.E. 11.10.10 to 4.01.11 to LVLS 3202U
- This Lim-Flex replacement is sired by MAGS Scotland and out of a recent sale highlight and donor prospect, FLLR Terry.
- She has a -0.9 birth EPD, a 25 for milk and a .59 marbling EPD.
- 006W is deep sided, feminine fronted and very sound in her structure.

## 35 HC Classic 708

Lim-Flex (75/68.0) cow • 01.26.07 • HACO 708T  
Homo Polled • Double Black • LFF 1867885

**HC FINAL TIME 407** HC OVERTIME 972  
HC POLLED CANDY 763  
HC DYNASTY 215  
YKCC ATLANTIC 397N  
HC BLACK CANDY 466  
**HC CLASSIC 337** COLEMAN AMBUSH 002  
HC CLASSIC 118  
HIGH VALLEY 4C6 AMBUSH  
COLEMAN BLACKBIRD 713  
HC OVERTIME 756  
HC770

	CED	BW	WW	YW	MA	CEM	SC	ST	DOC	CW	RE	YG	MS	SMTI
EPDs	5	2.7	44	85	23	1	0.9	-	23	15	0.51	-0.03	0.02	44
	27	35	29	19	16	24	16	-	16	21	20	20	20	

- A.I. 11.25.10 to AUTO Dollar General 122R; P.E. 12.15.10 to 3.11.11 to MAGS Why
- Sired by HC Final Time 407 is this 75% Lim-Flex four-year-old.
- She is homozygous polled and double black.
- 708T has a 86 yearling EPD, 22 for milk and is positive for both REA and marbling EPD's.

## Fall Bred Cows



## 36 LVLS Wonderful Tonight 9164

Lim-Flex (25/22.8) cow • 01.15.09 • LVLS 9164W  
Double Polled • Double Black • LFF 1940438

**BASIN MAX 602C** G T MAXIMUM SCOTCH CAP  
BASIN ELINE ERICA 315U GT MISS TRAVELER 58  
G D A R RAINMAKER 340  
LVLS MAVERICK 753G BASIN ELINE ERICA 1313  
COLE FIRST DOWN 46D  
LVLS 9164N LVLS JENI 601V

	CED	BW	WW	YW	MA	CEM	SC	ST	DOC	CW	RE	YG	MS	SMTI
EPDs	9	-0.7	41	89	22	4	0.1	11	-	11	-0.46	0.49	0.46	55
	P	34	22	17	22	P	P	P	-	P	P	P	P	

- P.E. 11.15.10 to 12.10.10 to BOHI Titlelist 7050T; P.E. 12.15.10 to 3.11.11 to MAGS Why
- 9164W is a very productive looking quarter blood female.
- She has a light birth weight, good growth EPD's and above average carcass trait EPD's.
- This female is angular in her appearance, feminine in her front, square hipped with plenty of depth of rib.

## 37 WBBK Austine 8026U

PB Limousin (93/84.6) cow • 04.15.08 • WBBK 8026U  
Homo Polled • Double Black • NPF 1907940

**DHVO ACE 128R** GPFF BLAQUE RULON BLACK DIAMOND  
AMY JO DHAN 20L QUAIL RUN RAMONA BP  
BLACK CAT DHAN 152G  
GPFF AMBER JO  
EXLR LIMITED EDITION 765J EXLR POLLED BENCHMARK709G  
**EXLR JUSTINE 626L** WULFS GLENDA 7021G  
EXLR 199H WULFS FANFARE 4055F  
EXLR 558F

	CED	BW	WW	YW	MA	CEM	SC	ST	DOC	CW	RE	YG	MS	SMTI
EPDs	6	2.1	50	86	29	0	0.7	-	14	16	0.30	-0.01	-0.02	44
	25	32	22	16	14	23	P	-	P	P	P	P	P	

- A.I. 2.07.11 to Wulf's Urban Cowboy; P.E. 2.08.11 to 3.12.11 to MAGS Unmerciful
- Homozygous polled and double black.
- Her sire DHVO Ace 128R is a full brother to the proven and popular AI sire DHVO Duece 132R.
- This young female as a 50 weaning EPD, a 31 for milk and a .8 for scrotal EPD.
- Her dam, EXLR Justine 626L is out of the high milk cow in the breed, EXLR 199H who has produced many sale highlights and is now working in the Englewood Farms program.

## 39 ZWLC Temptress 017S

PB Limousin (100/87.8) cow • 09.13.06 • ZWLC 017S  
Polled • Black • NPF 1862362

**LESF ASPHALT 9N** GPFF BLAQUE RULON BLACK DIAMOND  
GPFF EXTRA SWEET ELITE QUAIL RUN RAMONA BP  
LCCK TOMAHAWKS TOUCHDOWN  
HC EXTRAORDINARY HCR 61X  
COLE FIRST DOWN 46D  
CARROUSELS LEGEND COLE CATALINA 3309C  
**EXLR TEMPTRESS 7287P** EXLR DAKOTA 353G  
EXLR TEMPTRESS 085K EXLR 132G

	CED	BW	WW	YW	MA	CEM	SC	ST	DOC	CW	RE	YG	MS	SMTI
EPDs	5	1.3	31	69	24	-1	0.4	-	13	-14	0.21	-0.15	-0.11	37
	20	34	29	24	17	19	17	-	P	23	22	22	22	

- A.I. 11.25.10 to CFLX Wild Card; P.E. 12.15.10 to 3.11.11 to MAGS Why
- Black and polled purebred sired by LESF Asphalt 9N.
- This five year old is in the prime of her production.
- She is very complete, youthful in her udder and always brings in a stout calf.

## 38 WBBK Pillowlette 8027U

Lim-Flex (62/55.7) cow • 04.15.08 • WBBK 8027U  
Homo Polled • Homo Black • LFF 1907941

**LH RODEMASTER 338R** JCL LODESTAR 27L HUNTS HI-LITER 245G  
VERMILION E BLACKBIRD9546 LOGAN'S CHEERLEADER 280G  
VERMILION 31 STACLER 3491  
CH ENV BLACKBIRD C5941  
JCL BAXTER COLE FIRST DOWN 46D  
**MAGS PILLOW BOOK 519P** LKCC SMITH CATTLE 452B  
MAGS 20M LVLS POLLED BLACK JACK  
THOMAS LASS 4520

	CED	BW	WW	YW	MA	CEM	SC	ST	DOC	CW	RE	YG	MS	SMTI
EPDs	8	1.4	52	105	30	5	0.8	-	-	39	-0.20	0.44	0.37	56
	P	30	22	17	14	P	P	-	-	P	P	P	P	

- P.E. 11.15.10 to 12.10.10 to BOHI Titlelist 7050T; P.E. 12.15.10 to 3.11.11 to MAGS Why
- Here is a huge numbered, double homozygous female sired by LH Rodemaster 338R.
- 8027U has a 1.5 birth to go with a 51 weaning and a 106 yearling EPD respectively.
- That performance with a 29 for milk and a .40 for marbling makes this a very complete female on paper.
- You can buy with confidence that this three year old female will produce very marketable and productive cattle.

## 40 CJLM Last Chance 519U

PB Limousin (100/90.0) cow • 09.06.08 • CJLM 519U  
Double Polled • Black • NPF 1933882

**MINE PLD MALACHI 2950M** AUTO BLACK DAKOTA 129J EXLR DAKOTA 353G  
JCL MADELINE DFCL JET SET BPC 34Y  
TEXS RANGER PRIMO  
MISS CHARU NORTHERN 852M  
LVLS POLLED BLACK JACK MAYS BLACK JET  
**MINE PLD NICE N EASY2465M** LVLS REBECA  
MINE BLAZING STAR 9067J JB POLLED ROLEX 6F  
TEXS STAR 200Y

	CED	BW	WW	YW	MA	CEM	SC	ST	DOC	CW	RE	YG	MS	SMTI
EPDs	-1	3.5	47	88	18	2	0.3	-	-	10	0.34	-0.09	-0.11	41
	14	28	18	13	12	13	P	-	-	P	P	P	P	

- P.E. 12.01.10 to 4.01.11 to LVLS 3202U
- Here is a solid female sired by a consistent herd bull out of AUTO Black Dakota 129J.
- She has a 87 yearling EPD, a 18 for milk and a .32 for REA.
- 519U is a three year old set to go into production for her new owner.

## 41 CJLM Nibbles 317T

PB Limousin (100/89.1) cow • 02.27.07 • CJLM 317T  
Polled • Double Black • NPF 1986988

MINE PLD LADYSMAN 5721R	CARROUSELS NASDAQ MINE POLLED REFINED 1038L	AUTO BLACK DAKOTA 129J CARROUSELS JAMAICA MINE POLLED DRYDOCK 004H JCL RED ROSE WULFS RAMBLER 8400X WULFS EXAMPLE 5074E EXLR POLLED RESOLVE 175G MAGS JUST FOR TODAY
HAWS NIBBLES 725N	WULFS GUARDIAN 5074G HAWS LETS DANCE 680L	

	CED	BW	WW	YW	MA	CEM	SC	ST	DOC	CW	RE	YG	MS	SMTI
EPDs	7	4.0	42	79	21	3	0.4	-	-	-	-	-	-	-
	P	P+	P	P	P	P	P	-	-	-	-	-	-	-

- A.I. 11.25.10 to GAR Ultimate; P.E. 12.01.10 to 4.01.11 to LVLS 3202U
- This young black and polled heifer offers a top pedigree with the blend of Nasdaq and Wulf's Guardian
- She will make a great addition to anyone's program in the country
- She is either carrying the service to the Angus sire GAR Ultimate or the 50% Limousin sire LVLS 3202U



MAGS Teddie, sire of Lot 42A



KRVN Naskar 013N, sire of Lot 43.

## Cow/Calf Pairs

### 42 CJLM Classic Cookie 398T

PB Limousin (100/91.1) cow • 11.12.07 • CJLM 398T  
Het Polled • Het Black • NPF 1908287

MNWS FRONTIER 507R	GPFF BLAQUE RULON WELZ MACY 203M	BLACK DIAMOND QUAIL RUN RAMONA BP EXLR DAKOTA 353G REI MISSY 970G LKCC TOMAHAWKS TOUCHDOWN MISS WOLFETTE 4221S POLLED POWER BUIT 8V WLCC SABLE
SLVL DREAM COOKIE 138D	WULFS QUARTERBACK 4222B EAFM COOKIE	

	CED	BW	WW	YW	MA	CEM	SC	ST	DOC	CW	RE	YG	MS	SMTI
EPDs	-	1.7	35	66	28	3	0.1	-	19	1	0.61	-0.21	0.16	36
	-	30	24	18	17	29	P	-	P	P	P	P	P	

- P.E. 6.05.11 to 9.03.11 to BOHI Titlelist 7050T
- 398T is a very complete and powerful female sired by MNWS Frontier 507R.
- She is double black and double polled.
- Her dam is SLVL Dream Cookie 138D, a past proven donor for our program.
- If you like long bodied, thick ended, big boned and big footed purebred females 398T will work for you.
- She sells with a heifer calf sired by MAGS Teddie.
- **LOT 42A - CJLM CLASSY 398Y** - Lim-Flex (69/62.6) Cow; Double Polled; Double Black; 04.17.11; CJLM 398Y; LFF 1985848. Sired by MAGS Teddie

	CED	BW	WW	YW	MA	CEM	SC	ST	DOC	CW	RE	YG	MS	SMTI
EPDs	8	-0.4	43	82	34	3	-	-	-	6	0.20	0.04	0.21	50
	P	P+	P	P	P	P	-	-	-	P	P	P	P	

### 43 Miss Sweet Lady 04S

Lim-Flex (75/66.2) cow • 10.06.06 • GJLR 04S  
Homo Polled • Double Black • LFF 1881118

KRVN NASKAR 013N	GPFF BLAQUE RULON WL JU JU GAL 149J	BLACK DIAMOND QUAIL RUN RAMONA BP COLE FIRST DOWN 46D CHR GOSSIP GAL COLE FIRST DOWN 46D LKCC SMITH CATTLE 418A D H D TRAVELER 6807 GAR BANDO 78
GJ LADY FLEX DOWN 81	LOGAN'S DUAL RUN GAR 6807 TRAVELER 902	

	CED	BW	WW	YW	MA	CEM	SC	ST	DOC	CW	RE	YG	MS	SMTI
EPDs	10	-1.2	32	71	16	3	0.6	-	11	8	0.07	0.23	0.15	43
	P	P	P	P	P	P	P	-	P	P	P	P	P	

- P.E. 6.05.11 to 9.03.11 to BOHI Titlelist 7050T
- 75% Lim-Flex sired by KRVN Naskar 013N.
- She is homozygous polled and double black.
- She has a -1.2 birth EPD, along with a 0.7 for scrotal and a .16 for marbling.
- 04S is moderate in her frame, sound in her structure and has a great disposition.
- She sells with a bull calf sired by MAGS Teddie 04Y that is homozygous polled.
- **LOT 43A - CJLM Teddie 04Y** - Lim-Flex (63/55.6) Bull; Homo Polled; Double Black; 04.23.11; CJLM 04Y; LFM 19850803. Sired by MAGS Teddie.

	CED	BW	WW	YW	MA	CEM	SC	ST	DOC	CW	RE	YG	MS	SMTI
EPDs	7	0.1	44	91	25	4	0.4	-	11	20	-0.13	0.37	0.34	53
	P	P	P	P	P	P	P	-	P	P	P	P	P	

## 44 CLLL Black Lady 101T

PB Limousin (93/83.9) cow • 03.05.07 • CLLL 101T  
Homo Polled • Homo Black • NPF 1879081

**EXLR EXCELLANTE 251L**  
EXLR 199H  
EXLR POLLED RESOLVE 175G  
KRMCC BLACK LEGACY 917B  
LKCC SMITH CATTLE 110C  
WULFS FANFARE 4055F  
EXLR 558F  
COLE FIRST DOWN 46D  
RADS POLL BLACK POWDER I  
EXLR INTRIGUE 361G  
CHAZ MISS GRETA 7003G

**MAGS PAYBACK**  
MAGS LADY ACE  
RADS BLACK PRODIGY

	CED	BW	WW	YW	MA	CEM	SC	ST	DOC	CW	RE	YG	MS	SMTI
EPDs	7	-0.1	35	67	33	0	1.0	-	21	17	0.21	-0.03	0.07	43
	P	32	24	20	18	P	P	-	P	P	P	P	P	

- P.E. 6.05.11 to 9.03.11 to BOHI Titlelist 7050T
- Double homozygous purebred female.
- She has a 0 birth EPD, a 33 for milk and a 0.9 for scrotal EPD.
- 101T is a beautiful female, she is long fronted, smooth shouldered and long and level down her top.
- She sells with a Lim-Flex heifer calf sired by CJLM Putnam that is homozygous polled.
- **LOT 44A - CJLM OLIVIA 101Y** - Lim-Flex (75/64.7) Cow; Homo Polled; Double Black; 05.01.11; CJLM 101YY; LFF 1985849. Sired by CJLM Putnam 423U.

	CED	BW	WW	YW	MA	CEM	SC	ST	DOC	CW	RE	YG	MS	SMTI
EPDs	8	0.3	44	85	32	3	-	-	-	-	-	-	-	0
	P	P+	P	P	P	P	-	-	-	-	-	-	-	

## 46 COLE Miss Shurtop 793T

Lim-Flex (50/43.8) cow • 03.05.07 • COLE 93T  
Double Polled • Homo Black • LFF 1884709

**SCHURRTOP MC 2500**  
SCHURRTOP R S 1413 2153  
SCHURRTOP M C  
PAPA EQUATOR 2928  
SCHURRTOP 1483 9024  
BROOKS SCHURR TREND  
RYANS SCHURRTOP 2125  
COLE FIRST DOWN 46D  
LKCC TOMAHAWKS TOUCHDOWN  
2 155P  
HC REACH  
COLE 70T

**COLE 1102L**  
COLE 62Y

	CED	BW	WW	YW	MA	CEM	SC	ST	DOC	CW	RE	YG	MS	SMTI
EPDs	8	1.2	47	92	35	4	-	-	-	26	-0.24	0.30	0.38	55
	22	38	31	21	24	20	-	-	-	19	18	18	17	

- P.E. 6.05.11 to 9.03.11 to BOHI Titlelist 7050T
- Homozygous black and double polled.
- 50% Lim-Flex out of a COLE First Down daughter.
- She has a 92 yearling EPD, a 35 milk EPD and a .38 for marbling.
- She sells with a CJLM Putnam heifer calf.
- **LOT 46A - CJLM JULIA 793Y** - Lim-Flex (50/44.6) cow; Double Polled; Double Black; 03.05.11; CJLM 793Y; LFF 1985852. Sired by CJLM Putnam 423U.

	CED	BW	WW	YW	MA	CEM	SC	ST	DOC	CW	RE	YG	MS	SMTI
EPDs	9	0.8	50	98	33	5	-	-	-	-	-	-	-	0
	P	P	P	P	P	P	-	-	-	-	-	-	-	

## 45 MRTA Rocky Top Elvira

PB Limousin (100/91.) cow • 08.28.05 • MRTA 828R  
Homo Polled • Double Black • NPF 1811463

**HUNTS HI-LITER 245G**  
TNUH MISS C245  
WADDLES COBALT 3106  
D&M POLLED BRITE-LITES  
MISS WOLFETTE 9230X  
RUNL 486A  
MS ROTT 172A  
LLR POLLED PROMPTER WJ770  
PJMCC BLOSSUM 24T  
NMCC POLLED BLACK POWDER  
MRTA MISS BLACK CANDY

**MRTA BLACK EVE**  
MRTA MISS BLACK BRANDEE

	CED	BW	WW	YW	MA	CEM	SC	ST	DOC	CW	RE	YG	MS	SMTI
EPDs	9	1.1	39	80	20	6	0.6	19	13	12	0.13	0.03	0.10	45
	31	36	24	18	21	29	P	P	P	P	P	P	P	

- P.E. 6.05.11 to 9.03.11 to BOHI Titlelist 7050T
- Homozygous polled and double black.
- Sired by Hunts Hi-Liter is this six year old very productive female.
- 828R does a tremendous job in production as you will see when you see her MAGS Teddie heifer calf at side.
- **LOT 45A - CJLM Elvira 828Y** - Lim-Flex (69/62.6) Cow; Homo Polled; Double Black; 02.01.11; CJLM 828Y; LFF 1985804. Sired by MAGS Teddie.

	CED	BW	WW	YW	MA	CEM	SC	ST	DOC	CW	RE	YG	MS	SMTI
EPDs	9	0.2	45	89	30	4	-	-	-	12	-0.04	0.16	0.34	55
	P	P+	P	P	P	P	-	-	-	P	P	P	P	

## 47 MINE PLD Coffee Break 5117

PB Limousin (100/87.0) cow • 02.10.05 • MINE 5117R  
Double Polled • Double Black • NPF 1823279

**ANLC KINGPIN 0718K**  
D&M MISS MERCEDES 0190U  
COLE FIRST DOWN 46D  
LKCC TOMAHAWKS TOUCHDOWN  
2 155P  
D&M MR MERCEDES 12P  
MISS DIAMOND 019M  
COLE FIRST DOWN 46D  
COLE CATALINA 3309C  
JCL BLACK OUT  
COLE 4230

**CARROUSELS NATURAL STAR**  
CARROUSELS LADYLIKE 1230L  
COLE WULF HUNT

	CED	BW	WW	YW	MA	CEM	SC	ST	DOC	CW	RE	YG	MS	SMTI
EPDs	14	-2.2	32	65	20	7	0.5	-	21	13	0.44	-0.14	-0.08	38
	18	34	28	15	16	16	11	-	P	P	P	P	P	

- P.E. to 7.10.11 to CJLM Putnam 423U; P.E. 7.11.11 to 9.03.11 to BOHI Titlelist 7050T
- Double polled and double black.
- 5117R has a 13 for calving ease and a 21 docility EPD.
- This is a long topped, big hipped, productive female for the taking.
- She sells with a MAGS Teddie bull calf.
- **LOT 47A - CJLM SURE SHOT 5117Y** - Lim-Flex (69/60.6) bull; Double Polled; Double Black; 05.21.11; CJLM 2011Y; LFM 1985851. Sired by MAGS Teddie.

	CED	BW	WW	YW	MA	CEM	SC	ST	DOC	CW	RE	YG	MS	SMTI
EPDs	11	-1.4	42	82	30	5	-	-	-	12	0.12	0.08	0.25	51
	P	P	P	P	P	P	-	-	-	P	P	P	P	

# NEW SALE LOCATION!!

## At The Farm, London, Kentucky

**DIRECTIONS ... Address:** 80 Sublimity School Rd., London, KY

**From I-75,** take Exit 38, London, KY, for KY Hwy. 192. Go East on KY-192 for 0.3 miles. Run Right on to Old Whitley Road/Sublimity School Road. Proceed for 1.5 miles (Continue straight, through the 4-way stop), turning left to stay on Sublimity School Rd. The farm is immediately on the left.



Lot 48, SBLX To Be Announced 080T



Lot 50, Hope Floats

## 48 SBLX To Be Announced 080T

PB Limousin (100/88.4) cow • 05.24.07 • SBLX 080T  
Homo Polled • Black • NPF 1879607

**WLR DIRECT HIT**  
KRVN NASKAR 013N  
MAGS NIGHT AMBUSH

**CARROUSELS PLAYGIRL 4080P**  
MAGS KABOOM  
CARROUSELS JUST MY GIRL

GPF BLAQUE RULON  
WL JU JU GAL 149J  
AUTO BLACK DAKOTA 129J  
MISS WULFETTE 6230F  
EXLR DAKOTA 353G  
MAGS GO IN STYLE  
JCL BLACK OUT  
ASHLEY SLBO 102A

	CED	BW	WW	YW	MA	CEM	SC	ST	DOC	CW	RE	YG	MS	SMTI
EPDs	2	3.5	44	84	17	1	0.8	-	12	23	0.65	-0.24	-0.09	42
	P	P	P	P	P	P	P	-	P	P	P	P	P	

- P.E. 6.05.11 to 9.03.11 to BOHI Titlelist 7050T
- Here is a four year old homozygous polled daughter of WLR Direct Hit.
- She has a balanced set of EPD's with a .9 for scrotal EPD and a .62 for REA.
- 080T is moderate framed, well balanced and sound on her feet and legs.
- She sells with a heifer calf sired by CJLM Putnam that is homozygous polled.
- **LOT 48A - CJLM BAILEE 080Y** - Lim-Flex (75/66.9) cow; Homo Polled; Red; 05.22.11; CJLM 080Y; LFF 1985802. Sired by CJLM Putnam 423U.

	CED	BW	WW	YW	MA	CEM	SC	ST	DOC	CW	RE	YG	MS	SMTI
EPDs	6	1.3	48	94	24	3	-	-	-	-	-	-	-	0
	P	P+	P	P	P	P	-	-	-	-	-	-	-	

## 49 COLE Miss Shurtop 7133T

Lim-Flex (50/42.7) cow • 03.19.07 • COLE 133T  
Double Polled • Homo Black • LFF 1884771

**SCHURRTOP MC 2500**  
SCHURRTOP M C  
SCHURRTOP R S 1413 2153

**COLE 71L**  
COLE FIRST DOWN 46D  
COLE 401D

PAPA EQUATOR 2928  
SCHURRTOP 1483 9024  
BROOKS SCHURR TREND  
RYANS SCHURRTOP 2125  
LKCC TOMAHAWKS TOUCHDOWN  
2 155P  
CLHB HITCHIN POST 108Y  
COLE 66X

	CED	BW	WW	YW	MA	CEM	SC	ST	DOC	CW	RE	YG	MS	SMTI
EPDs	8	1.7	49	94	28	4	-	-	20	-0.29	0.37	0.42	57	
	16	36	31	20	24	15	-	-	19	18	18	18		

- PE to 7.10.11 to CJLM Putnam 423U; P.E. 7.11.11 to 9.03.11 to BOHI Titlelist 7050T
- Black and double polled.
- Exceptional performance in this female. She has a 59 weaning EPD, a 102 yearling EPD and a .76 for REA.
- This purebred female is sired by Shurrtop MC 2500 and is a very good producing four year old.
- **LOT 49A - CJLM DREW 133Y** - Lim-Flex (44/38.4) bull; Double Polled; Double Black; 04.12.11; CJLM 133YY; LFM 1985854. Sired by MAGS Teddie.

	CED	BW	WW	YW	MA	CEM	SC	ST	DOC	CW	RE	YG	MS	SMTI
EPDs	8	0.6	50	96	34	4	-	-	16	-0.25	0.34	0.50	60	
	P	P	P	P	P	P	-	-	P	P	P	P		

## 50 Hope Floats

Lim-Flex (50/42.8) cow • 01.23.07 • DJDE 196T  
Double Polled • Black • LFF 1876633

**EXAR PIT BOSS 409**  
EXAR SUDDEN IMPACT 1537  
WK WINNIE 7305

**NBLF HOPE 196L**  
FTL DOUBLE AGENT 307E  
NBLF BLK POLLED HOPE 660F

NORTHERN IMPROVEMENT 4480  
B L R BLUSHING PRIDE 9097  
KRUGERRANDS MONEYLINE

WULFS RAMBLER 8400X  
MS POLLED SPIRIT 24A  
WULFS RAMBLER 8400X  
MISS BLACK ACT NBLF 505T

	CED	BW	WW	YW	MA	CEM	SC	ST	DOC	CW	RE	YG	MS	SMTI
EPDs	10	-0.6	47	89	29	4	-	-	17	-0.32	0.42	0.28	51	
	23	29	20	13	14	20	-	-	P	P	P	P		

- PE to 7.10.11 to CJLM Putnam 423U; P.E. 7.11.11 to 9.03.11 to BOHI Titlelist 7050T
- Truly a sale highlight!
- This black and double polled female is sired by EXAR Pit Boss 409.
- 196T is a 50% Lim-Flex female that has a -0.5 birth EPD, a 31 for milk and a .30 marbling EPD.
- She is efficient in her frame, deep sided and easy fleshing.
- **LOT 50A - CJLM ANDREW 196Y** - Lim-Flex (75/65.4) Bull; Double Polled; Double Black; 07.10.11; CJLM 196Y; LFM 1985855. Sired by BOHI Titlelist 7050T.

	CED	BW	WW	YW	MA	CEM	SC	ST	DOC	CW	RE	YG	MS	SMTI
EPDs	8	0.1	51	97	29	6	-	-	23	0.01	0.26	0.16	49	
	P	P+	P	P	P	P	-	-	P	P	P	P		



Basin Franchise P142, sire of Lot 51

## 51 EXLR Reassurance 222T

Lim-Flex (37/33.9) cow • 09.04.07 • EXLR 222T  
Homo Polled • Het Black • LFF 1894654

C A FUTURE DIRECTION 5321  
**BASIN FRANCHISE P142**  
BASIN CHLOE 812L

JCL LODESTAR 27L  
**CHR REASSURANCE 289R**  
CHR NEAR BY 400N

GAR PRECISION 1680  
C A MISS POWER FIX 308  
GARDENS EXPEDITION  
BASIN CHLOE 6198  
HUNTS HI-LITER 245G  
LOGAN'S CHEERLEADER 280G  
GPFF BLAQUE RULON  
KQ 8020H

	CED	BW	WW	YW	MA	CEM	SC	ST	DOC	CW	RE	YG	MS	SMTI
EPDs	11	-2.3	48	99	25	4	0.3	-	-	20	-0.41	0.53	0.67	65
	P	35	28	20	20	P	P	-	-	P	P	P	P	

- P.E to 7.10.11 to CJLM Putnam 423U; P.E. 7.11.11 to 9.03.11 to BOHI Titlelist 7050T
- Sired by Basin Franchise P142 is this Lim-Flex female.
- 222T is a four year old homozygous polled and double black brood cow.
- She combines a light birth EPD with a 97 yearling EPD, a 25 for milk and a .68 for marbling.
- She sells with a bull calf sired by BOHI Titlelist 7050T.
- **LOT 51A - CJLM STRAIGHT SHOT 222Y** - Lim-Flex (69/61.0) Bull; Double Polled; Double Black; 04.29.11; CJLM 222Y; LFF 1985853. Sired by BOHI Titlelist 7050T.

	CED	BW	WW	YW	MA	CEM	SC	ST	DOC	CW	RE	YG	MS	SMTI
EPDs	8	0.7	51	102	27	6	0.3	-	-	25	-0.04	0.33	0.36	56
	P	P+	P	P	P	P	P	-	-	P	P	P	P	

## 52 MAGS Road Home

Lim-Flex (50/46.6) cow • 03.26.05 • MAGS 3388R  
Double Polled • Het Black • LFF 1816215

B/R NEW DESIGN 036  
**BON VIEW NEW DESIGN 878**  
BON VIEW GAMMER 85

LVLS FARMER 4G  
**VORD LUSCIOUS 101L**  
VORD JASMINE

V D A R NEW TREND 315  
B/R BLACKCAP EMPRESS 76  
BON VIEW BANDO 598  
BON VIEW GAMMER 233  
COLE FIRST DOWN 46D  
LVLS JENI 601V  
WULFS QUARTERBACK 4222B  
VORT DANDI 438D

	CED	BW	WW	YW	MA	CEM	SC	ST	DOC	CW	RE	YG	MS	SMTI
EPDs	11	-0.5	36	77	31	7	0.1	18	17	11	-0.40	0.34	0.55	58
	30	38	31	26	25	29	11	P	P	42	38	38	38	

- P.E to 7.10.11 to CJLM Putnam 423U; P.E. 7.11.11 to 9.03.11 to BOHI Titlelist 7050T
- Double polled and double black.
- Sired by Bon View New Design 878 is this 50% Lim-Flex brood cow.
- Her dam is VORD Luscious 101L who is sired by LVLS Farmer 4G.
- 3388R has a 11 for calving ease, a 31 milk EPD and a .56 for marbling.
- She sells with a bull calf sired by BOHI Titlelist 7050T.
- **LOT 52A - CJLM INFORCE 338Y** - Lim-Flex (75/67.3) Bull; Double Polled; Double Black; 05.15.11; CJLM 3388Y; LFM 1985856. Sired by BOHI Titlelist 7050T.

	CED	BW	WW	YW	MA	CEM	SC	ST	DOC	CW	RE	YG	MS	SMTI
EPDs	8	0.9	45	91	30	7	0.2	-	14	20	-0.04	0.24	0.30	53
	P	P+	P	P	P	P	P	-	P	P	P	P	P	

## 53 CJLM Shootin Star 465U

PB Limousin (87/78.0) cow • 05.05.08 • CJLM 465U  
Double Polled • Double Black • NPF 1924197

GPFF BLAQUE RULON  
**MWNS FRONTIER 507R**  
WELZ MACY 203M

MINE PLD MALACHI 2950M  
**MINE PLD STAR BRIGHT 5165**  
MINE PLD MELODY 2492M

BLACK DIAMOND  
QUAIL RUN RAMONA BP  
EXLR DAKOTA 353G  
REI MISSY 970G  
AUTO BLACK DAKOTA 129J  
JCL MADELINE  
MINE POLLED DRYDOCK 004H

	CED	BW	WW	YW	MA	CEM	SC	ST	DOC	CW	RE	YG	MS	SMTI
EPDs	6	1.3	37	72	22	1	0.2	-	-	3	0.36	-0.13	-0.13	37
	27	33	21	16	11	24	P	-	-	P	P	P	P	

- 465U is a three year old replacement female that is sired by MWNS Frontier.
- She is a double black and double polled purebred.
- She combines a low birth EPD to adequate growth and carcass numbers.
- **LOT 53A - CJLM TITLELIST 465Y** - PB Limousin (94/83.0) Bull; Double Polled; Double Black; 07.14.11; CJLM 465Y; NPM 1985857. Sired by BOHI Titlelist 7050T.

	CED	BW	WW	YW	MA	CEM	SC	ST	DOC	CW	RE	YG	MS	SMTI
EPDs	5	1.7	46	88	25	4	0.3	-	-	17	0.35	0.00	-0.05	42
	P	P	P	P	P	P	P	-	-	P	P	P	P	

**54**

**EXLR Becky 7230T**

Lim-Flex (37/34.2) cow • 09.05.07 • EXLR 7230T  
Double Polled • Double Black • LFF 1883768

BON VIEW NEW DESIGN 1407  
**EXAR NEW LOOK 2971**  
N BAR PRIMROSE 2424

WULF'S GEAR UP 9153B  
**LEWIS MISS BECKY 469J**  
LEWIS MISS BECKY 306F

B/R NEW DESIGN 036  
BON VIEW PRIDE 664  
EMULATION 31  
PRIMROSE N BAR 9962  
WULF'S CHALLENGER 6044Y  
WULF'S MIGHTY FINE 9153X  
WADDLES CLEAR CHOICE 360

	CED	BW	WW	YW	MA	CEM	SC	ST	DOC	CW	RE	YG	MS	SMTI
EPDs	8	2.7	49	95	24	2	0.3	-	2	22	-0.25	0.41	0.42	57
	P	36	30	21	23	P	P	-	P	P	P	P	P	

- PE to 7.10.11 to CJLM Putnam 423U; P.E. 7.11.11 to 9.03.11 to BOHI Titlelist 7050T
- 7230T is a four year old EXAR New Look 2971 daughter.
- She has a 93 yearling EPD, a 24 for milk and a SMTI of 57.
- She has a great profile, is feminine fronted, long and level down her top and has a nice udder.
- 7230T is a 37% Lim-Flex female that sells with a MAGS Teddie heifer calf.
- **LOT 54A - CJLM HAILEE 7230Y** - Lim-Flex (37/34.2) cow: Double Polled; Double Black; 04.18.11; CJLM 7230Y; LFF 1985801. Sired by MAGS Teddie.

	CED	BW	WW	YW	MA	CEM	SC	ST	DOC	CW	RE	YG	MS	SMTI
EPDs	9	0.9	50	97	32	2	-	-	-	17	-0.23	0.36	0.50	60
	P	P+	P	P	P	P	-	-	-	P	P	P	P	

# NEW SALE LOCATION!!

## At The Farm, London, Kentucky

**DIRECTIONS ... Address:** 80 Sublimity School Rd., London, KY

**From I-75**, take Exit 38, London, KY, for KY Hwy. 192. Go East on KY-192 for 0.3 miles. Run Right on to Old Whitley Road/Sublimity School Road. Proceed for 1.5 miles (Continue straight, through the 4-way stop), turning left to stay on Sublimity School Rd. The farm is immediately on the left.

### Five Full Sisters

**55**

**BOHI Sakura 6521S**

Lim-Flex (50/44.9) cow • 09.29.06 • BOHI 6521S  
Homo Polled • Black • LFF 1866263

GAR PRECISION 1680  
**C A FUTURE DIRECTION 5321**  
C A MISS POWER FIX 308

WULFS RAMBLER 8400X  
**SFKL POLLED PRECEDENT**  
SFKL POLLED PARADIGM 448D

TEHAMA BANDO 155  
919 GAR 856  
S A F POWER FIX  
C A LADY EIGHT 1015  
POLLED PACK LEADER 1182U  
T TRI PURECHO 100K  
WULF'S HOME RUN 9226AA  
MISS WOLFETTE 9201X

	CED	BW	WW	YW	MA	CEM	SC	ST	DOC	CW	RE	YG	MS	SMTI
EPDs	10	-0.9	43	88	31	3	0.3	11	7	17	-0.11	0.23	0.58	62
	P	P	P	P	P	P	P	P	P	P	P	P	P	

- P.E. 12.15.10 to BOHI Titlelist 7050T; due Fall 2011.

**56**

**BOHI Sunflower 6376S**

Lim-Flex (50/44.9) cow • 10.03.06 • BOHI 6376S  
Homo Polled • Black • LFF 1866255

GAR PRECISION 1680  
**C A FUTURE DIRECTION 5321**  
C A MISS POWER FIX 308

WULFS RAMBLER 8400X  
**SFKL POLLED PRECEDENT**  
SFKL POLLED PARADIGM 448D

TEHAMA BANDO 155  
919 GAR 856  
S A F POWER FIX  
C A LADY EIGHT 1015  
POLLED PACK LEADER 1182U  
T TRI PURECHO 100K  
WULF'S HOME RUN 9226AA  
MISS WOLFETTE 9201X

	CED	BW	WW	YW	MA	CEM	SC	ST	DOC	CW	RE	YG	MS	SMTI
EPDs	10	-0.9	43	88	31	3	0.3	11	7	17	-0.11	0.23	0.58	62
	P	P	P	P	P	P	P	P	P	P	P	P	P	

- P.E. 12.15.10 to BOHI Titlelist 7050T; due Fall 2011.

**57**

**BOHI Shady Lady 6514S**

Lim-Flex (50/44.9) cow • 10.04.06 • BOHI 6514S  
Homo Polled • Black • LFF 1866655

GAR PRECISION 1680  
**C A FUTURE DIRECTION 5321**  
C A MISS POWER FIX 308

WULFS RAMBLER 8400X  
**SFKL POLLED PRECEDENT**  
SFKL POLLED PARADIGM 448D

TEHAMA BANDO 155  
919 GAR 856  
S A F POWER FIX  
C A LADY EIGHT 1015  
POLLED PACK LEADER 1182U  
T TRI PURECHO 100K  
WULF'S HOME RUN 9226AA  
MISS WOLFETTE 9201X

	CED	BW	WW	YW	MA	CEM	SC	ST	DOC	CW	RE	YG	MS	SMTI
EPDs	10	-0.9	43	88	31	3	0.3	11	7	17	-0.11	0.23	0.58	62
	P	P	P	P	P	P	P	P	P	P	P	P	P	

- PE to 7.10.11 to CJLM Putnam 423U; P.E. 7.11.11 to 9.03.11 to BOHI Titlelist 7050T
- **LOT 57A - CJLM TITLELIST 6514Y** - Lim-Flex (75/66.5) Bull; Double Polled; Double Black 05.10.11; CJLM 6514Y. Sired by BOHI Titlelist 7050T.

	CED	BW	WW	YW	MA	CEM	SC	ST	DOC	CW	RE	YG	MS	SMTI
EPDs	8	0.9	49	96	30	5	0.3	-	9	24	0.11	0.18	0.31	55
	P	P+	P	P	P	P	P	-	P	P	P	P	P	

## Full Sisters

### 58 BOHI Saffron 6371S

Lim-Flex (50/44.9) cow • 09.23.06 • BOHI 6371S  
Homo Polled • Black • LFF 1866254

GAR PRECISION 1680  
**C A FUTURE DIRECTION 5321**  
C A MISS POWER FIX 308

WULFS RAMBLER 8400X  
**SFKL POLLED PRECEDENT**  
SFKL POLLED PARADIGM 448D

TEHAMA BANDO 155  
919 GAR 856  
S A F POWER FIX  
C A LADY EIGHT 1015  
POLLED PACK LEADER 1182U  
T TRI PURECHO 100K  
WULF'S HOME RUN 9226AA  
MISS WOLFETTE 9201X

	CED	BW	WW	YW	MA	CEM	SC	ST	DOC	CW	RE	YG	MS	SMTI
EPDs	10	-0.9	43	88	31	3	0.3	11	7	17	-0.11	0.23	0.58	62
	P	P	P	P	P	P	P	P	P	P	P	P	P	P

- P.E. to 7.10.11 to CJLM Putnam 423U; P.E. 7.11.11 to 9.03.11 to BOHI Titlelist 7050T
- **LOT 58A - CJLM EMILY 6371Y** - Lim-Flex (75/66.5) Cow; Double Polled; Double Black; CJLM 6371Y; 03.23.11; LFF 1985858. Sired by BOHI Titlelist 7050T.

	CED	BW	WW	YW	MA	CEM	SC	ST	DOC	CW	RE	YG	MS	SMTI
EPDs	8	0.6	49	96	30	5	0.3	-	9	24	0.11	0.18	0.31	55
	P	P+	P	P	P	P	P	-	P	P	P	P	P	P

### 59 BOHI Sashay 6512S

Lim-Flex (50/44.9) cow • 10.04.06 • BOHI 6512S  
Homo Polled • Black • LFF 1866262

GAR PRECISION 1680  
**C A FUTURE DIRECTION 5321**  
C A MISS POWER FIX 308

WULFS RAMBLER 8400X  
**SFKL POLLED PRECEDENT**  
SFKL POLLED PARADIGM 448D

TEHAMA BANDO 155  
919 GAR 856  
S A F POWER FIX  
C A LADY EIGHT 1015  
POLLED PACK LEADER 1182U  
T TRI PURECHO 100K  
WULF'S HOME RUN 9226AA  
MISS WOLFETTE 9201X

	CED	BW	WW	YW	MA	CEM	SC	ST	DOC	CW	RE	YG	MS	SMTI
EPDs	10	-0.9	43	88	31	3	0.3	11	7	17	-0.11	0.23	0.58	62
	P	P	P	P	P	P	P	P	P	P	P	P	P	P

- P.E. to 7.10.11 to CJLM Putnam 423U; P.E. 7.11.11 to 9.03.11 to BOHI Titlelist 7050T
- **LOT 59A - CJLM SAMANTHA 6512Y** - Lim-Flex (75/66.5) Cow; Double Polled; Double Black 03.25.11. CJLM 6512U; LFF 1985859. Sired by BOHI Titlelist 7050T.

	CED	BW	WW	YW	MA	CEM	SC	ST	DOC	CW	RE	YG	MS	SMTI
EPDs	8	0.9	49	96	30	5	0.3	-	9	24	0.11	0.18	0.31	55
	P	P+	P	P	P	P	P	-	P	P	P	P	P	P

## Spring Bred Heifers

### 60 DPBN Vegas 1W

PB Limousin (88/77.9) cow • 10.01.09 • DPBN 1W  
Double Polled • Double Black • NPF 1951160

CARROUSELS PURE POWER  
**WULFS SHOP TALK 2332S**  
WULFS MYRLENE 2332M

JCL LODESTAR 27L  
**DFLC HBHPC 1S**  
DFLC HBPC 25L

GPFF BLAQUE RULON  
TUBB FIRST CLASS 666F  
COLE WOLF HUNT  
WULFS JOY BELLS 9202J  
HUNTS HI-LITER 245G  
LOGAN'S CHEERLEADER 280G  
DFLC DOUBLE SHOT BPB 41E  
DALTONS EDITH ERICA 250

	CED	BW	WW	YW	MA	CEM	SC	ST	DOC	CW	RE	YG	MS	SMTI
EPDs	10	0.0	48	92	18	7	0.6	-	-	32	0.34	0.06	0.13	49
	20	34	23	19	14	19	P	-	-	P	P	P	P	P

- A.I. 5.03.11 to CALO Brickyard; P.E. from 5.05.11 to 8.01.11 to LVLS 3202U
- 1W is perhaps the best Wulf's Shoptalk daughter you will find.
- Her dam sold in the Milam Cattle co. production sale to Jepson Limousin for \$7500.
- She is moderate in her frame, very attractive in her look and stout made.
- This superb female has donor potential and a female you will want to consider.



DFLC HBHPC 1S, dam of Lot 60

### 61 CJLM Elusive Lady 737W

Lim-Flex (50/44.8) cow • 10.16.09 • CJLM 737W  
Homo Polled • Homo Black • LFF 1962865

S A F FOCUS OF ER  
**MYTTY IN FOCUS**  
MYTTY COUNTESS 906

COLE FIRST DOWN 46D  
**MINE PLD ELUSIVE 9023J**  
MAGS ELUSIVE DREAMS

S A F FAME  
G D A R FOREVER LADY 246  
SITZ ALLIANCE 6595  
BALDRIDGE COUNTESS 357  
LKCC TOMAHAWKS TOUCHDOWN  
2 155P  
TYRE DEAN 17B  
MAGS YOUNG MADONNA

	CED	BW	WW	YW	MA	CEM	SC	ST	DOC	CW	RE	YG	MS	SMTI
EPDs	10	-0.4	52	103	28	7	0.5	-	21	31	-0.33	0.52	0.57	62
	P	31	24	21	24	P	P	-	P	P	P	P	P	P

- P.E. from 5.05.11 to 8.01.11 to LVLS 3202U
- Homozygous black and homozygous polled.
- Sired by MYTTY In Focus out of a very productive COLE First Down 46D daughter.
- She has a -0.3 birth EPD, 52 for weaning weight, a 102 yearling EPD and a 60 SMTI.

### 62 CJLM 718W

Lim-Flex (75/68.1) cow • 09.01.09 • CJLM 718W  
Double Polled • Red • LFF 1962983

BR MIDLAND  
**MAGS SCOTLAND**  
MAGS MARQUEE

CHAZ FIRST CHOICE 6004F  
**DVFC FIRST STEP 414J**  
COSC FASCINATION 134F

TWIN VALLEY PRECISIONE161  
BR ROYAL LASS 7036-19  
EXLR DAKOTA 353G  
MAGS JEWEL  
COLE FIRST DOWN 46D  
CHAZ MISS ROXANNE 92C  
WULFS RAMBLER 8400X  
C L GLENDA

	CED	BW	WW	YW	MA	CEM	SC	ST	DOC	CW	RE	YG	MS	SMTI
EPDs	4	1.1	48	85	16	4	0.1	-	9	32	0.03	0.26	0.34	55
	P	32	22	15	11	P	P	-	P	P	P	P	P	P

- A.I. 5.03.11 to MYTTY In Focus; P.E. from 5.05.11 to 8.01.11 to LVLS 3202U
- Here is a full sister to 721W.
- 718W has tremendous potential as a replacement female.
- Great genetics, good EPD's all in a sound, productive package.

# Spring Bred Heifers



## 63 CJLM Sweet Deal 746W

PB Limousin (88/80.3) cow • 10.23.09 • CJLM 746W  
Het Polled • Homo Black • NPF 1962866

LVLS SECRET WEAPON 4408K  
**AUTO DOLLAR GENERAL 122R**  
AUTO KYRIA 232K

DVFC ARROWHEAD 1004J  
**DVFC SWEET DEAL 1128L**  
FTL 221D

LVLS FARMER 4G  
LVLS 408H  
AUTO HACKETT 702H  
WULFS HAPPINESS 8136H  
WULFS GUARDIAN 5074G  
SLVL SABLE COOKIE 381E  
WBR BARCELONA 155B

	CED	BW	WW	YW	MA	CEM	SC	ST	DOC	CW	RE	YG	MS	SMTI
EPDs	7	0.3	51	94	30	9	0.3	-	16	25	0.55	-0.01	0.02	46
	P	29	23	18	17	P	P	-	P	P	P	P	P	

- P.E. from 5.05.11 to 8.01.11 to LVLS 3202U
- Homozygous black and double polled.
- Sired by the multiple trait leading sire AUTO Dollar General 122R.
- Her dam is the top selling and proven donor DVFC Sweet Deal 1128L.
- This replacement female is easy on the eye, long sided, well made and big hipped.
- She has a 51 weaning EPD, a 30 for milking ability and a .56 REA.

## 64 CJLM 721W

Lim-Flex (75/68.1) cow • 09.01.09 • CJLM 721W  
Double Polled • Red • LFF 1962984

BR MIDLAND  
**MAGS SCOTLAND**  
MAGS MARQUEE

CHAZ FIRST CHOICE 6004F  
**DVFC FIRST STEP 414J**  
COSC FASCINATION 134F

TWIN VALLEY PRECISIONE161  
BR ROYAL LASS 7036-19  
EXLR DAKOTA 353G  
MAGS JEWEL  
COLE FIRST DOWN 46D  
CHAZ MISS ROXANNE 92C  
WULFS RAMBLER 8400X  
C L GLENDA

	CED	BW	WW	YW	MA	CEM	SC	ST	DOC	CW	RE	YG	MS	SMTI
EPDs	4	1.1	48	85	16	4	0.1	-	9	32	0.03	0.26	0.34	55
	P	P	P	P	P	P	P	-	P	P	P	P	P	

- P.E. from 5.05.11 to 8.01.11 to LVLS 3202U
- Red and double polled is this 75% Lim-Flex female.
- She is sired by MAGS Scotland out of a COLE First Choice 6004F daughter.
- She has a balanced set of EPD's with a .32 for marbling.

# Embryos

## 65 FOUR Embryos

PB Limousin • Homo Black • Double Polled

LVLS SECRET WEAPON 4408K  
**AUTO DOLLAR GENERAL 122R**  
AUTO KYRIA 232K

DVFC ARROWHEAD 1004J  
**DVFC SWEET DEAL 1128L**  
FTL 221D

LVLS FARMER 4G  
LVLS 408H  
AUTO HACKETT 702H  
WULFS HAPPINESS 8136H  
WULFS GUARDIAN 5074G  
SLVL SABLE COOKIE 381E  
WBR BARCELONA 155B

	CED	BW	WW	YW	MA	CEM	SC	ST	DOC	CW	RE	YG	MS	SMTI
EPDs	7	0.7	53	95	30	9	0.3	9	16	25	0.55	0.01	0.02	47

- These embryo's are out of the multiple trait leading purebred herd sire AUTO Dollar General 122R and DVFC Sweet Deal 1128L.
- The resulting calf will be homozygous black and double polled.
- These calves will have tremendous EPD's with a 95 yearling EPD and a 30 for milk.



AUTO Dollar General 122R, sire of Lot 65 embryos



DVFC Sweet Deal 1128L, dam of Lot 65 embryos



BOHI Titlelist 7050T, sire of Lot 66 embryos

## 66 SEVEN Embryos

PB Limousin • Homo Black • Double Polled

AUTO DOLLAR GENERAL 122R  
**BOHI TITLELIST 7050T**  
CARROUSELS PINA COLADA

AUTO BLACK CROSS 133P  
**AUTO MISS MISSOURI 640S**  
KRVN NABBED 320N

LVLS SECRET WEAPON 4408K  
AUTO KYRIA 232K  
AUTO BLACK DAKOTA 129J  
ELMW GINNIE P58G  
AUTO THE BACHELOR 158L  
EXLR LUVLY 087F  
GPF BLAQUE RULON

	CED	BW	WW	YW	MA	CEM	SC	ST	DOC	CW	RE	YG	MS	SMTI
EPDs	6	1.5	50	96	25	5	0.3	-	5	25	51	-0.1	0.00	30

- This is an intriguing mating with BOHI Titlelist on a AUTO Black Cross cow.
- The calves will be homozygous black and double polled.
- The resulting calves will be 87% purebreds and have really good EPD's combining moderate to low birth, exceptional growth and milk and adequate carcass numbers.



CALO Brickyard 902W, sire of Lot 67 embryos



CJLM Exclusive Girl 390T, maternal sib to Lot 68 embryos, the \$11,000 valued donor for Greenbriar Cattle Co.

## 67 FIVE Embryos

50% Lim-Flex • Double Black • Double Polled

SCHILLING'S TALLADEGA  
**CALO BRICKYARD 902W**  
EXG E839 1407 M175 LS

SUMMITCRESTHIGHPRIME 0H29  
**MAGS ROARING TWENTIES**  
MAGS LADY ACE

KRVN NASKAR 013N  
RCSX RAINY DAY 80R  
BON VIEW NEW DESIGN 1407  
PAF 4019 6807 E839  
GARDENS PRIME TIME  
SUMMITCREST MISSIE 2F55  
EXLR INTRIGUE 361G  
CHAZ MISS GRETA 7003G

	CED	BW	WW	YW	MA	CEM	SC	ST	DOC	CW	RE	YG	MS	SMTI
EPDs	10	-1.0	38	82	28	4	-	-	4	11	-0.23	0.35	0.46	55

- Sired by the National Champion and highly syndicated herd sire CALO Brickyard and out of one of our leading donors, MAGS Roaring Twenties.
- These calves will be double black and double polled with a great chance of being homozygous for either trait.
- This mating will produce a 28 milk EPD, a .44 for marbling and combine calving ease and performance.

## 68 FIVE Embryos

50% Lim-Flex • Double Black • Double Polled

G A R PREDESTINED  
**RITO REVENUE 5M2 of 2536**  
G A R PRECISION 2536

COLE FIRST DOWN 46D  
**MINE PLD ELUSIVE 9023J**  
MAGS ELUSIVE DREAMS

B/R NEW DESIGN 036  
G A R EXT 4206  
GAR PRECISION 1680  
G A R EXT 2104  
LKCC TOMAHAWKS TOUCHDOWN 2 155P  
TYRE DEAN 17B  
MAGS YOUNG MADONNA

	CED	BW	WW	YW	MA	CEM	SC	ST	DOC	CW	RE	YG	MS	SMTI
EPDs	7	0.9	32	98	27	5	0.3	-	7	27	-0.29	0.51	0.65	64

- The resulting calves of this mating will be 50% Lim-Flex and be double black and double polled.
- The dam of this mating has produced many sale highlights for our program and we feel this could be her best flush yet.
- The EPD's from Rito Revenue 5M2 and 9023J will be superb and we feel that phenotypically the calves will be exceptional.



**R&R**  
Marketing Company  
P.O. Box 281677  
Nashville, TN 37228

(L#2845)

**FIRST CLASS  
PRE-SORTED  
PAID**  
Montezuma, Iowa  
Permit No. 30



### LVLS 3202U

Lim-Flex (50/43) Bull • 01.04.08 • LVLS 3202U  
Homo Polled • Homo Black • LFM 1901892

**BON VIEW NEW DESIGN 1407 X LVLS 9202S**

	CED	BW	WW	YW	MA	CEM	SC	ST	DOC	CW	RE	YG	MS	SMTI
EPDs	10	-1.0	58	107	38	5	0.9	-	-	50	-0.18	0.47	0.62	66
	28	45	30	18	19	25	P	-	-	22	21	21	21	



### MAGS Why

% Limousin (25/22.1) Bull • 03.03.09 • MAGS 3618W  
Homo Polled • Homo Black • NXM 19944359

**GAR PREDESTINED X MAGS ROCKCRESS**

	CED	BW	WW	YW	MA	CEM	SC	ST	DOC	CW	RE	YG	MS	SMTI
EPDs	9	0.3	55	110	39	3	0.5	-	-	4	-0.59	0.53	0.87	74
	P	37	27	23	20	P	P	-	-	23	22	22	22	



### BOHI Titlelist 7050T

PB Limousin (100/88) Bull • 03.08.07 • BOHI 7050T  
Het Polled • Homo Black • NPM 1905458

**AUTO DOLLAR GENERAL 122R X CARROUSELS PINA COLADA**

	CED	BW	WW	YW	MA	CEM	SC	ST	DOC	CW	RE	YG	MS	SMTI
EPDs	5	2.0	55	105	29	8	0.3	-	10	30	0.33	0.11	0.04	47
	33	61	37	22	18	28	18	-	25	44	40	40	39	



### CJLM Putnum 423U

Lim-Flex (50/45.4) Bull • 01.12.08 • CJLM 423U  
Homo Polled • Double Black • LFM 1927461

**LH Rodemaster 338R X MAGS Roaring Twenties**

	CED	BW	WW	YW	MA	CEM	SC	ST	DOC	CW	RE	YG	MS	SMTI
EPDs	10	0.3	53	104	30	5	0.8	-	13	43	-0.14	0.51	0.48	59
	25	32	24	19	15	23	P	-	P	P	P	P	P	



### MAGS Teddie

Lim-Flex (37/34.1) Bull • 09.04.07 • MAGS 9533T  
Homo Polled • Het Black • LFM 1900435

**G A R PREDESTINED X EXLR 199H**

	CED	BW	WW	YW	MA	CEM	SC	ST	DOC	CW	RE	YG	MS	SMTI
EPDs	9	-0.5	51	98	40	3	0.6	-	14	11	-0.21	0.29	0.57	64
	30	49	36	25	24	28	P	-	P	44	41	41	40	