

10th Annual Production Sale

*Prairie View Farms*

**APRIL 3, 2020**

Friday at 6:30 p.m. at the farm, Gridley, Illinois

985

**DVE**  
*Prairie View Farms*

# Prairie View Farms

10th Annual Production Sale

# April 3, 2020

Friday at 6:30 p.m. at the farm, Gridley, Illinois

*We are MORE than Champions!*

If you skip to the middle of this catalog, you'll find a spread of pictures of our customers in the backdrop. We are so excited and proud of these champions and the accomplishments of these kids in the show ring this year! But take a look at the pictures we have on the two pages this letter is on. We are equally as proud of the people that our customers become by getting involved in the Angus industry by working with us at PVF. By developing their heifer calf projects, getting involved in Angus activities, judging contests, leadership programs, even mentoring other young showmen, we are creating what we hope are the future of the Angus Breed and agriculture itself. We've been watching youth develop at PVF for 10 years of this sale, and the fruits of our labor show itself by the young adults that we are now proud to call former PVF kids.

This year, we are offering 31 fall born heifer calves, six herd bull prospects and nine two-year old pairs that are unmatched in their potential for growing a show project for a youth, an award winning genetics program, or a new donor cow prospect for your herd.

Join us and join our family of champions, and much more. We welcome you to our farm anytime, especially on sale day. Cattle will be available for viewing all day. We will have a homemade dinner at 5:30 p.m. and the sale will begin at 6:30.

*- The PVF Family*

ALAN & THERESA MILLER, 217.840.6935 | [pvfangus@gmail.com](mailto:pvfangus@gmail.com) | ORLAN & CAROL  
BRANDON & CATHY JONES, 309.370.1081  
KYLE CHRISLAW, 608.751.9640 | CURTIS HARSH, 740.272.0339

[www.pvfangus.com](http://www.pvfangus.com)





**INTERNET COVERAGE ...**

The sale will be covered live by CCI.Live. Register for a bid number to bid online at <https://www.cci.live> or through [www.pvfangus.com](http://www.pvfangus.com). If you have questions registering to bid, contact CCI.Live's Whitney Andras at 405.714.7929 or 516.366.0734.

**HERD HEALTH ...** All cattle selling will be accompanied by proper health certificates for immediate shipment. The bulls selling will have passed a breeding soundness exam and be ready for service.

**TRUCKING ARRANGEMENTS ...** We are glad to assist you with trucking arrangements on your purchases.

**TERMS & CONDITIONS ...** Cattle sell under the Terms & Conditions as recommended by the American Angus Assoc.

**EMBRYOS INTEREST ...** PVF will be retaining 1/2 embryo interest on heifers - Lots 1, 2, 3, 4, 5, 6, 7, 8, 9, 10, 16 & 19 selling in this offering. Contact Alan for more details.

**DIRECTIONS TO THE SALE ...** From Gridley, IL and Route 24 go 2.8 miles north on Center St.  
*Address: 10788 N 250 East Rd., Gridley, IL 61744*

**AIRPORT ...** 1 hour and 45 minutes to Chicago Midway (MDW); 30 minutes to Bloomington, Illinois (BMI); & 50 minutes to Peoria, Illinois (PIA). Contact Alan or Theresa for any help with travel arrangements.

**SALE FORMAT ...** A video will play of each Lot as the sale happens. The heifers, cows and bulls will all be available for viewing outside of the sale barn and will not be coming into the sale ring during the auction.

**INSURANCE ...** Available through James F Bessler Inc., Livestock Mortality Insurance, 815.762.2641.

**SALE MANAGEMENT ...**

RANCE LONG, Inc. | 981.510.3464 cell  
[rlong@rancelong.com](mailto:rlong@rancelong.com) | [www.rancelong.com](http://www.rancelong.com)



**SALE SCHEDULE**

**Thursday, April 2, 2020**

Noon Cattle available for viewing

**Friday, April 3rd, 2020**

Cattle available for viewing all day

5:30 p.m. Dinner served (*sponsored by Umbarger Feeds & Showbloom*)

6:30 p.m. Sale Begins

**AUCTIONEER**

Cody Lowderman .....309.833.5543

**RINGMEN**

Casey Jentz .....608.234.1998

Bruce Bradley .....417.848.3457

John Dickinson .....916.806.1919

Shane Ryan .....309.391.7490

**SALE DAY PHONES**

Alan Miller .....217.840.6935

Theresa Miller .....217.649.1990

Rance Long .....918.510.3464

Curtis Harsh .....740.272.0339

Brandon Jones .....309.370.1081

Cathy Jones .....309.258.1266

Kyle Chrislaw .....608.751.9640

**HOTEL ACCOMMODATIONS**

Holiday Inn & Suites Bloomington Airport .....309.662.4700

3202 E. Empire Street, Bloomington, IL 61704

Ask for the Prairie View Farms block for \$105/ night.

Thank you to all those who helped with sale day preparations, including all on the PVF Crew, Arin Strasburg for the catalog and advertising and Kyla Fawcett for photography.

# PVF BLACKLIST 7077



Ref « PVF Blacklist 7077

~ REFERENCE SIRE ~

## PVF Blacklist 7077

Bull +\*18944889

tattoo: 7077

calved: 02.17.17

EPDs	BEPD	WEPD	YEPD	MILK	MARB	RE	SM	SB
	+4.1	69	117	20	0.04	1.09	+159	+45

PVF INSIGHT 0129

{ S A V Brilliance 8077  
P V F Missie 790

PVF BLACKBIRD 3070

{ Dameron First Class  
ALL PVF Blackbird 645

S A V Bismarck 5682  
S A V Blackcap May 5270  
P V F New Horizon 001  
P V F Miss Raptor 024  
EXG RS First Rate S903 R3  
Dameron Northern Miss 3114  
Leachman Saughatchee 3000C  
P V F Blackbird 201

The 2020 PVF heifer calf offering will feature a select set of Blacklist females who are flawless in their design with tons of future!

Two maternal sisters to this very popular AI sire sell as Lots 18 and 19.

We are excited about what the future holds for Blacklist and his progeny. We believe he is the very best son of PVF Insight 0129 -- consistently transmitting style and eye appeal with incredible soundness and structure.



PVF  
**MISSIE**  
 Cow Family



Lot 1 « PVF Missie 9214



PVF Missie 6228, The dam of Lot 1 and the past National Western Stock Show Reserve Grand Champion Female.

lot **1 PVF Missie 9214**

Cow +19665518      tattoo: 9214      calved: 07.03.19

EPDs	BEPD	WEPD	YEPD	MILK	MARB	RE	SM	SB
	+3.8	+58	+97	+21	+0.06	+0.95	+37	+141

PVF BLACKLIST 7077

- { PVF Insight 0129
- { PVF Blackbird 3070

PVF MISSIE 6228

- { C&C Priority 1428B EXAR
- { PVF Missie 790

- SAV Brilliance 8077
- PVF Missie 790
- Dameron First Class
- ALL PVF Blackbird 645
- Dameron First Class
- Exar Princess 7879
- PVF New Horizon 001
- PVF Miss Raptor 024

Retaining half embryo interest.

This July heifer by Blacklist offers unlimited potential. She is a stout featured, extremely well-designed, fault free individual.

She is produced from the past NWSS Reserve Grand Champion, PVF Missie 6228 and is actually double-bred to the prolific dam of PVF Insight 0129.

lot **1A THREE EMBRYOS**

Selling one package of three embryos by **PVF Missie 6228** and **KR Casino**



Lot 2 « PVF Missie 9244



PVF Missie 6311, this dam of Lot 2 enjoyed a very successful show career.

Retaining half embryo interest.

An incredible September-born daughter of PVF Inauguration 6174. This is a daughter of a past Reserve Division Champion at the Atlantic National Regional Angus Show, PVF Missie 6311. In addition, her dam was selected Supreme Champion at the Iowa Angus Preview Show.

This heifer may very well be the softest centered, highest capacity female we have ever produced while maintaining a great deal of phenotype. This combination will make her a crowd favorite, not just on sale day but throughout her show career.

*lot* **2 PVF Missie 9244**

Cow +19681229

tattoo: 9244

calved: 09.21.19

	BEPD	WEPD	YEPD	MILK	MARB	RE	SM	SB
EPDs	+4.0	+50	+88	+24	+0.22	+0.72	+29	+123

<b>PVF INAUGURATION 6174</b>	}	Dameron First Class	EXG RS First Rate S903 R3
		PVF Missie 790	Dameron Northern Miss 3114
<b>PVF MISSIE 6311</b>	}	PVF Surveillance 4129	P V F New Horizon 001
		PVF Missie 0084	P V F Miss Raptor 024
			B C Lookout 7024
			PVF Ellen 9100
		S A V Bismarck 5682	
		PVF Missie 790	



Lot 3 « PVF Missie 9223



PVF Missie 3078, this past NJAS Division Champion is a maternal sister to PVF Insight 0129 and the dam of Lot 3.

*Lot* **3 PVF Missie 9223**  
 Cow 19665526      tattoo: 9223      calved: 09.03.19

	BEPD	WEPD	YEPD	MILK	MARB	RE	SM	SB
<b>EPDs</b>	+3.1	+53	+86	+24	-0.10	+90	+35	+120
<b>PVF THE NATURAL 7042</b>	<ul style="list-style-type: none"> <li>┌ PVF Insight 0129</li> <li>└ PVF Blackbird 3127</li> </ul>		<ul style="list-style-type: none"> <li>SAV Brilliance 8077</li> <li>PVF Missie 790</li> <li>PVF Windfall SCC 9005</li> <li>ALL PVF Blackbird 645</li> <li>EXG RS First Rate S903 R3</li> <li>Dameron Northern Miss 3114</li> <li>PVF New Horizon 001</li> <li>PVF Miss Raptor 024</li> </ul>					
<b>PVF MISSIE 3078</b>	<ul style="list-style-type: none"> <li>┌ Dameron First Class</li> <li>└ PVF Missie 790</li> </ul>							

Retaining half embryo interest.

This double-bred PVF Missie 790 female is by the popular ABS sire PVF The Natural 7042, and produced from the past Division Champion at the National Junior Angus Show, PVF Missie 3078. 3078 was a many times champion including being selected Supreme Champion at the Georgia National.

When it comes to angularity and femininity, this fancy, beautifully fronted female has the wow factor that will make her very competitive in the fall calf division.



Lot 4 «  
PVF Missie 9227



*PVF Missie 0084 - This maternal sister to PVF Insight 0129 has been extremely influential in the PVF program. Direct daughters sell as Lots 4, 5, 6 and 7.*



*PVF Missie 4149 - this past NJAS Grand Champion Female is a maternal sister to Lots 4, 5, 6 and 7.*

Retaining half embryo interest.

A complete package in this direct daughter of the influential donor, PVF Missie 0084. Missie 0084 needs no introduction, she has produced many elite females at PVF, including the past NJAS Grand Champion, PVF Missie 4149. Other maternal sisters to Lots 4 through 7 includes the \$60,000 one-half interest, PVF Missie 7273, as well as the \$100,000 lead off female in 2016, PVF Missie 5216, who went on to be selected Reserve Grand Champion at the 2016 NJAS.

*lot* **4 PVF Missie 9227**

Cow 19665529

tattoo: 9227

calved: 09.07.19

	BEPD	WEPD	YEPD	MILK	MARB	RE	SM	SB
<b>EPDs</b>	+2.6	+39	+72	+19	+0.23	+0.54	+29	+118
<b>C&amp;C PRIORITY 1428B EXAR</b>	<ul style="list-style-type: none"> <li>⌈ Dameron First Class</li> <li>⌈ Exar Princess 7879</li> </ul>			<ul style="list-style-type: none"> <li>EXG RS First Rate S903 R3</li> <li>Dameron Northern Miss 3114</li> <li>BC 7022 Raven 7965</li> <li>Greens Princess 1012</li> <li>GAR Grid Maker</li> <li>SAV Abigale 0451</li> <li>PVF New Horizon 001</li> <li>PVF Miss Raptor 024</li> </ul>				
<b>PVF MISSIE 0084</b>	<ul style="list-style-type: none"> <li>⌈ SAV Bismarck 5682 ]</li> <li>⌈ PVF Missie 790</li> </ul>							

# PVF FLUSHMATE SISTERS



Lot 5 «  
PVF Missie  
9233



Lot 6 «  
PVF Missie 9247



Lot 7 «  
PVF Missie 9254

*lot* **5 PVF Missie 9233**  
Cow +19665532      tattoo: 9233      calved: 09.15.19

EPDs	BEPD	WEPD	YEPD	MILK	MARB	RE	SM	SB
	+2.7	+50	+90	+24	+0.28	+0.75	+33	+150

*lot* **6 PVF Missie 9247**  
Cow +19666148      tattoo: 9247      calved: 09.25.19

EPDs	BEPD	WEPD	YEPD	MILK	MARB	RE	SM	SB
	+2.7	+50	+90	+24	+0.28	+0.75	+33	+150

*lot* **7 PVF Missie 9254**  
Cow 19666150      tattoo: 9254      calved: 10.01.19

EPDs	BEPD	WEPD	YEPD	MILK	MARB	RE	SM	SB
	+2.7	+50	+90	+24	+0.28	+0.75	+33	+150

S&R ROUNDTABLE J328

{ Plainview Lutton E102  
PVF Proven Queen 786

PVF MISSIE 0084

{ SAV Bismarck 5682 ]  
PVF Missie 790

Exar Lutton 1831  
Plainview Pride C123  
BR Midland  
PVF Proven Queen 419  
GAR Grid Maker  
SAV Abigale 0451  
PVF New Horizon 001  
PVF Miss Raptor 024

Retaining half embryo interest in Lots 5, 6 and 7.

Three outstanding flush sisters. All three offer tremendous genetic potential as they are maternal sisters to the past NJAS Grand Champion, PVF Missie 4149, and the \$100,000, PVF Missie 5216, the Reserve Grand Champion at the 2016 NJAS. Additional maternal sisters include the \$70,000, PVF Missie 6270, the \$65,000, PVF Missie 6298 and the \$60,000 one-half interest, PVF Missie 7273.



Lot 9 «  
PVF Missie 9239



Lot 8 « PVF Missie 9238



PVF Missie 8246 - This maternal sister to Lots 8, 9, and 10 was selected Reserve Grand Champion at the Illinois State Fair Junior Angus Show.



PVF The Natural 7042, sire of three outstanding daughters Lots 8, 9 and 10.



Lot 10 «  
PVF Missie 9241

Retaining half embryo interest in Lots 8, 9 & 10.

These three flush mate sisters sired by the popular PVF bred sire, PVF The Natural 7042, are produced from the National Junior Angus Show Grand Champion Female, PVF Missie 4149. This dam is also the dam of PVF Missie 8246, a many times champion including being selected Reserve Champion at the Illinois State Fair Junior Angus Show.

Genetics that have proven to succeed stacked in this genetic tabulation of flush sisters who are line bred to the great donor, PVF Missie 790.

## lot 8 PVF Missie 9238

Cow +19666142 tattoo: 9238 calved: 09.17.19

EPDs	BEPD	WEPD	YEPD	MILK	MARB	RE	SM	SB
	+3.3	+53	+89	+21	-0.04	+0.85	+44	+124

## lot 9 PVF Missie 9239

Cow +19666143 tattoo: 9239 calved: 09.18.19

EPDs	BEPD	WEPD	YEPD	MILK	MARB	RE	SM	SB
	+3.3	+53	+89	+21	-0.04	+0.85	+44	+124

## lot 10 PVF Missie 9241

Cow +19666145 tattoo: 9241 calved: 09.19.19

EPDs	BEPD	WEPD	YEPD	MILK	MARB	RE	SM	SB
	+3.3	+53	+89	+21	-0.04	+0.85	+44	+124

PVF THE NATURAL 7042

{ PVF Insight 0129  
PVF Blackbird 3127

SAV Brilliance 8077  
PVF Missie 790  
PVF Windfall SCC 9005  
ALL PVF Blackbird 645  
Dameron First Class  
Exar Princess 7879  
SAV Bismarck 5682  
PVF Missie 790

PVF MISSIE 4149

{ C&C Priority 1428B EXAR  
PVF Missie 0084

## lot 10A THREE EMBRYOS

Selling one package of three embryos by PVF Missie 4149 and CHOICE of PVF The Natural 7042 or WB Pendleton 708 PVF SWSN

# Lot 11 PVF Missie 9251

Cow +19677368

tattoo: 9251

calved: 09.28.19

	BEPD	WEPD	YEPD	MILK	MARB	RE	SM	SB
EPDs	+3.3	+46	+79	+21	+0.21	+0.54	+23	+125
CONLEY EXPRESS 7211	SMA Watchout 482		Silveiras Watchout 0541					
	DPL Sandy 3040		2K Beauty 961					
			Silveiras Style 9303					
			KNC Cabin Creek Sandy 804					
PVF MISSIE 1148	PVF Windfall S C C 9005		PVF All Payday 729					
	PVF Missie 790		Dameron PVF Proven Queen 010					
			P V F New Horizon 001					
			P V F Miss Raptor 024					

A stout made, long-bodied daughter of Conley Express in this late September born female whose dam is a maternal sister to PVF Insight 0129. She is also a maternal sister to the influential PVF donor, PVF Missie 0084, who has direct daughters and several granddaughters included in this offering. Additionally, a maternal sister, PVF Missie 4137, was selected Supreme Champion Female at a past Houston Livestock Show.



PVF Missie 1148, dam of Lot 11.



Lot 11 « PVF Missie 9251

# Lot 12 PVF Missie 9212

Cow +19665517

tattoo: 9212

calved: 07.02.19

	BEPD	WEPD	YEPD	MILK	MARB	RE	SM	SB
EPDs	+2.2	+51	+92	+25	+0.40	+0.81	+30	+154
PVF INAUGURATION 6174	Dameron First Class		EXG RS First Rate S903 R3					
	PVF Missie 790		Dameron Northern Miss 3114					
			PVF New Horizon 001					
			PVF Miss Raptor 024					
PVF MISSIE 5245	C&C McKinley 3000 EXAR		Dameron First Class					
	PVF Missie 0084		RAC Winnie 7456					
			SAV Bismarck 5682					
			PVF Missie 790					

An opportunity to acquire a maternal sister to two of the most exciting bulls ever produced in the PVF program, PVF Marvel 9185 and PVF Reddington 9186 who both have semen interest selling in this sale.

Her dam is a direct daughter of the great PVF Missie 0084, who was selected as a Division Champion at the National Western Stock Show.



PVF Marvel 9185



PVF Reddington 9186

These two PVF star herd sires are maternal brothers to Lot 12.



Lot 12 « PVF Missie 9212

PVF  
**PROVEN QUEEN**  
*Cow Family*



*PVF Proven Queen 8256 is the maternal sister to Lot 13 and has enjoyed a phenomenal show career for Cameron Choate.*



*PVF Proven Queen 5250, dam of Lot 13 and past Atlantic National Reserve Grand Champion.*

*Lot 13 «  
 PVF Proven Queen 9243*

*lot* **13** **PVF Proven Queen 9243**

Cow +19666147

tattoo: 9243

calved: 09.20.19

	BEPD	WEPD	YEPD	MILK	MARB	RE	SM	SB
EPDs	+3.4	+53	+83	+16	-0.22	+0.90	+38	+107

**PVF THE NATURAL 7042**

- PVF Insight 0129
- PVF Blackbird 3127

- SAV Brilliance 8077
- PVF Missie 790
- PVF Windfall SCC 9005
- ALL PVF Blackbird 645

**PVF PROVEN QUEEN 5250**

- C&C McKinley 3000 EXAR
- PVF Proven Queen 2108

- Dameron First Class
- RAC Winnie 7456
- PVF Insight 0129
- Dameron PVF Proven Queen010

A striking design in this extreme fronted, well-designed daughter of PVF The Natural 7042 produced from the past Atlantic National Reserve Grand Champion, PVF Proven Queen 5250.

Her maternal sister, PVF Proven Queen 8256, has enjoyed much success for Cameron Choate, being selected Reserve Senior Heifer Calf Champion at the National Junior Angus Show in 2019. She was also named Reserve Senior Heifer Calf Champion in both the Open and Junior shows at the National Western Stock Show and was Reserve Grand Champion Angus at the NAILE Junior Show in 2019.

# Lot 14 PVF Princess 9258

Cow +19666153

tattoo: 9258

calved: 10.06.19

EPDs	BEPD	WEPD	YEPD	MILK	MARB	RE	SM	SB
	+3.0	+54	+91	+21	-0.03	+0.65	+36	+117

**DAMERON FIRST CLASS** { EXG RS First Rate S903 R3  
Dameron Northern Miss 3114

**EXAR PRINCESS 8063** { PVF Insight 0129  
Greens Princess 1012

Exar Lutton 1831  
Rafter S Blackcap P909  
Dameron PVF Raptor 702  
Dameron Miss 550  
SAV Brilliance 8077  
PVF Missie 790  
Greens Premium 7578  
Greens Princess 7418

Retaining half embryo interest.

This beautiful-fronted and big-ribbed daughter of the extremely rare First Class is a full sister to the 2019 National Western Stock Show Grand Champion Female.

Her dam is also the dam of Lot 15, a direct daughter of the past NWSS Champion, Princess 1012.



T/R NFF Princess E307, this NWSS Grand Champion is a full sister to Lot 14.



Lot 14 « PVF Princess 9258

# Lot 15 PVF Princess 9256

Cow +19666151

tattoo: 9256

calved: 10.02.19

EPDs	BEPD	WEPD	YEPD	MILK	MARB	RE	SM	SB
	+2.9	+56	+97	+21	-0.16	0.95	+43	+137

**PVF BLACKLIST 7077** { PVF Insight 0129  
PVF Blackbird 3070

**EXAR PRINCESS 8063** { PVF Insight 0129  
Greens Princess 1012

SAV Brilliance 8077  
PVF Missie 790  
Dameron First Class  
ALL PVF Blackbird 645  
SAV Brilliance 8077  
PVF Missie 790  
Greens Premium 7578  
Greens Princess 7418

This long-bodied, attractive-profiling female is consistent with the design that PVF Blacklist 7077 transmits.

She is double-bred to the heavily used and extremely popular Genex, Express, and PVF bred sire, PVF Insight 0129, backed by the famous Princess cow family.



PVF Blacklist 7077, sire of Lot 15



Lot 15 « PVF Princess 9256



Lot 16 « PVF Blackbird 9222

PVF Blackbird 7113,  
a maternal sister to Lot 16.



# PVF BLACKBIRD *Cow Family*

## Lot 16 PVF Blackbird 9222

Cow +19665525

tattoo: 9222

calved: 09.02.19

	BEPD	WEPD	YEPD	MILK	MARB	RE	SM	SB
EPDs	+3.2	+60	+102	+19	-0.34	+0.97	+40	+127

PVF BLACKLIST 7077	}	PVF Insight 0129	SAV Brilliance 8077
		PVF Blackbird 3070	PVF Missie 790
PVF BLACKBIRD 3127	}	PVF Windfall SCC 9005	Dameron First Class
		ALL PVF Blackbird 645	ALL PVF Blackbird 645
			PVF ALL PAYDAY 729
			Dameron PVF Proven Queen010
			Leachman Saughatchee 3000C
			PVF Blackbird 201

Retaining half embryo interest.

This cool-designed, very complete, well-structured daughter of PVF Blacklist 7077 is a maternal sister to PVF The Natural 7042 and is also a maternal sister to PVF Blackbird 8224, who sold through the 2019 PVF sale offering.

Her dam also produced PVF Blackbird 7113 who was selected third overall Junior Heifer at the Illinois State Fair and PVF Blackbird 8001 who was selected as the 2019 Illinois Beef Expo Champion Angus.

## Lot 17 PVF Blackbird 9232

Cow +19665531

tattoo: 9232

calved: 09.14.19

	BEPD	WEPD	YEPD	MILK	MARB	RE	SM	SB
EPDs	+2.5	+46	+79	+17	-0.07	+0.48	+20	+98

SILVEIRAS STYLE 9303	}	Gambles Hot Rod	Famous 7001
		Silveiras Elba 2520	Champion Hill Lady 703
PVF BLACKBIRD 3127	}	PVF Windfall SCC 9005	Twin Valley Precision E161
		ALL PVF Blackbird 645	DAR Elba 55
			PVF ALL PAYDAY 729
			Dameron PVF Proven Queen010
			Leachman Saughatchee 3000C
			PVF Blackbird 201

PVF Blackbird 3127 -  
This proven dam of  
PVF The Natural 7042  
is also the dam of  
Lots 16 and 17.



A fancy daughter of Style produced from the same dam as PVF The Natural 7042 and PVF Blackbird 7022 who was selected Grand Champion Female at the Illinois State Fair.

She is double-bred to the Blackbird cow family that continues to excel in the PVF program.

## 17A THREE EMBRYOS

Selling one package of three embryos by **PVF Blackbird 3127** and **CHOICE OF PVF Insight 0129 or PVF Blacklist 7077.**

PVF Blackbird 7022 - This Illinois State Fair Grand Champion is a maternal sister to Lots 16 & 17.



Lot 17 « PVF Blackbird 9232



PVF Blacklist 7077, his maternal sisters sell as Lots 18 & 19.



PVF Blackbird 3070 - This dam of PVF Blacklist 7077 is also the dam of Lots 18 & 19.

Lot 18 «  
PVF Blackbird 9236



## Lot 18 PVF Blackbird 9236

Cow +19666141 tattoo: 9236 calved: 09.16.19

EPDs	BEPD	WEPD	YEPD	MILK	MARB	RE	SM	SB
	+3.9	+64	+105	+19	+0.43	+0.45	+26	+137

## Lot 19 PVF Blackbird 9242

Cow +19666146 tattoo: 9242 calved: 09.20.19

EPDs	BEPD	WEPD	YEPD	MILK	MARB	RE	SM	SB
	+3.9	+64	+105	+19	+0.43	+0.45	+26	+137

CONLEY EXPRESS 7211

{ Sma Watchout 482  
DPL Sandy 3040

Silveiras Watchout 0514  
2K Beauty 961  
Silveiras Style 9303  
KNC Cabin Creek Sandy 804  
EXG RS First Rate S903 R3  
Dameron Northern Miss 3114  
Leachman Saugahatchee 3000C  
PVF Blackbird 201

PVF BLACKBIRD 3070

{ Dameron First Class  
ALL PVF Blackbird 645

Retaining half embryo interest in Lot 19.

Two outstanding flush sisters blending Conley Express 7211 with the same productive daughter of First Class who produced the sensational AI sire, PVF Blacklist 7077.

PVF Blackbird 3070 is also a maternal sister to PVF Blackbird 3127 who is the dam of PVF The Natural 7042 and she is also the dam of Lots 16 and 17.

## Lot 19A THREE EMBRYOS

Selling one package of three embryos by PVF Blackbird 3070 and WB Pendleton 708 PVF SWSN

Lot 19 « PVF Blackbird 9242







# PVE Champions





Lot 20 « PVF Blackbird 9245



WB Pendleton 708 PVF SWSN, sire of Lot 20.

## Lot 20 PVF Blackbird 9245

Cow +19674986

tattoo: 9245

calved: 09.22.19

	BEPD	WEPD	YEPD	MILK	MARB	RE	SM	SB
<b>EPDs</b>	+3.5	+61	+105	+18	+0.20	+0.61	+36	+132
<b>WB PENDLETON 708 PVF SWSN</b>	Dameron Best In Class WB PVF SF Lucy 4033					EXG RS First Rate S903 R3 Dameron Northern Miss 3114 PVF Insight 0129 WB PVF Lucy 1052		
<b>PVF BLACKBIRD 7001</b>	Colburn Primo 5153 ALL PVF Blackbird 645					Dameron First Class Silveiras Saras Dream 1339 Leachman Saughatchee 3000C PVF Blackbird 201		

This daughter of Pendleton will be a crowd favorite sale day as she exhibits a great deal of eye appeal and style. She is produced from a young dam by Primo who is a maternal sister to PVF Blackbird 3127 and in addition, PVF Blackbird 7001 is a maternal sister to Hoffman H/G Blackbird 620 who was selected as the 2017 NJAS Grand Champion Female.



Lot 21 « PVF Blackcap 9237



E/T Blackcap 304, the dam of Lot 21.

## Lot 21 PVF Blackcap 9237

Cow +19676419

tattoo: 9237

calved: 09.16.19

	BEPD	WEPD	YEPD	MILK	MARB	RE	SM	SB
<b>EPDs</b>	+3.6	+62	+110	+24	+0.32	+0.73	+40	+155
<b>PVF BLACKLIST 7077</b>	PVF Insight 0129 PVF Blackbird 3070					SAV Brilliance 8077 PVF Missile 790 Dameron First Class ALL PVF Blackbird 645		
<b>E/T BLACKCAP 304</b>	SAV Momentum 9274 E/T Meldon Blackcap 094					SAV Net Worth 4200 SAV Emblynette 3301 SAV Bismarck 5682 Tehama Blackcap N577		

A tremendous amount of rib and body in this big-volume, feminine-fronted, long-spined daughter of Blacklist produced from a daughter of SAV Momentum 9274 descending from the famous Tehama Blackcap cow family.

A unique individual with unlimited genetic potential.

## Lot 22 PVF Lucy 9220

Cow 19665524

tattoo: 9220

calved: 08.31.19

	BEPD	WEPD	YEPD	MILK	MARB	RE	SM	SB
EPDs	+3.2	+56	+103	+28	+0.12	+0.95	+30	+144
PVF INAUGURATION 6174	Dameron First Class		EXG RS First Rate S903 R3					
	PVF Missie 790		Dameron Northern Miss 3114					
	PVF Insight 0129		PVF New Horizon 001					
WB PVF LUCY R321	Thomas Lucy 7360		PVF Miss Raptor 024					
			SAV Brilliance 8077					
			PVF Missie 790					
			SAV 8180 Traveler 004					
			Thomas Lucy 4440					

An attractive-designed, very complete daughter of the PVF herd sire, PVF Inauguration 6174 who is a maternal brother to PVF Insight 0129.

Her dam is a full sister to PVF Visionary 3082. The dam of this heifer is a direct daughter of Thomas Lucy 7360, who has produced many incredible daughters for PVF, including the past NWSS Reserve Grand Champion, WB PVF Lucy 1052, the NWSS Division Champion, PVF Lucy 4106, the \$35,000, PVF Lucy 1041 and the \$29,000, PVF Lucy 3061, along with multiple other sale features in past sales.



PVF Inauguration 6174, sire of Lots 22 & 23.



Lot 22 « PVF Lucy 9220

## Lot 23 PVF Sophie 9219

Cow 19665523

tattoo: 9219

calved: 08.30.19

	BEPD	WEPD	YEPD	MILK	MARB	RE	SM	SB
EPDs	+5.2	+55	+98	+22	+0.35	+0.90	+15	+150
PVF INAUGURATION 6174	Dameron First Class		EXG RS First Rate S903 R3					
	PVF Missie 790		Dameron Northern Miss 3114					
	PVF Insight 0129		PVF New Horizon 001					
PVF SOPHIE 6289	PVF Sophie 417		PVF Miss Raptor 024					
			SAV Brilliance 8077					
			PVF Missie 790					
			Hyline Right Time 338					
			PVF Sophie 13					

An extremely fancy-fronted, well-made daughter of PVF Inauguration 6174 produced from a daughter of Insight backed by the Sophie cow family that has been very consistent in the PVF program.



Lot 23 « PVF Sophie 9219



Lot 24 « PVF Proven Queen 9211



Dameron PVF Proven Queen 010,  
the maternal granddam of Lot 24.

## Lot 24 PVF Proven Queen 9211

Cow Registration Pending

tattoo: 9211

calved: 06.27.19

	BEPD	WEPD	YEPD	MILK	MARB	RE	SM	SB
DAM EPDs	+4.3	+58	+100	+23	-0.07	+0.90	+34	+135
SIRE EPDs	+2.7	+41	+71	+15	+0.56	+0.12	+5	+94

SILVEIRAS STYLE 9303

{ Gambles Hot Rod  
Silveiras Elba 2520

Famous 7001  
Champion Hill Lady 703  
Twin Valley Precision E161  
D A R Elba 55

PVF PRVEN QUEEN 5094

{ PVF Insight 0129  
Dameron PVF Proven Queen 010

PVF Missie 790  
Leachman Explorer  
PVF Proven Queen 602

This summer-born female has an incredible amount of presence and is one that will catch the attention of all who are here.

Her dam by the popular Genex sire, PVF Insight 0129, is a direct daughter of the great foundation PVF donor, Proven Queen 010. PVF Proven Queen 5094 is a full sister to females who have been selected Division Champions at the National Junior Angus Show and have been extremely competitive for many PVF customers.



Lot 25 « PVF Proven Queen 9215



PVF Proven Queen 6150, the maternal sister of Lot 25

## Lot 25 PVF Proven Queen 9215

Cow +19665519

tattoo: 9215

calved: 07.05.19

	BEPD	WEPD	YEPD	MILK	MARB	RE	SM	SB
EPDs	+4.2	+53	+86	+19	+0.48	-0.004	+18	+112

CONLEY EXPRESS 7211

{ Sma Watchout 482  
DPL Sandy 3040

Silveiras Watchout 0514  
2K Beauty 961  
Silveiras Style 9303

PVF PROVEN QUEEN 3033

{ Dameron First Class  
PVF Proven Queen 602

KNC Cabin Creek Sandy 804  
EXG RS First Rate S903 R3  
Dameron Northern Miss 3114  
Rito 9FB3 of 5H11 Fullback  
Davis Proven Queen 3026

This early July-born daughter of Conley Express 7211 offers extra femininity with length and extension in a very complete package.

A maternal sister was shown successfully by the Gerken family and was selected Reserve Division Champion at both the NAILE as well as the National Western Stock Show.

# Lot 26 PVF Lucy 9230

Cow +19665530

tattoo: 9230

calved: 09.10.19

	BEPD	WEPD	YEPD	MILK	MARB	RE	SM	SB
EPDs	+3.8	+60	+107	+24	-0.09	+82	+54	+131

PVF BLACKLIST 7077

- { PVF Insight 0129
- { PVF Blackbird 3070

- SAV Brilliance 8077
- PVF Missie 790
- Dameron First Class
- ALL PVF Blackbird 645
- PVF ALL PAYDAY 729
- Dameron PVF Proven Queen010
- SAV 8180 Traveler 004
- Thomas Lucy 4440

WB PVF LUCY 1052

- { PVF Windfall SCC 9005
- { Thomas Lucy 7360

This fancy daughter of Blacklist is produced from a proven donor dam who was quite successful herself being named Grand Champion Bred and Owned Female at a past National Junior Angus Show and was also selected Reserve Grand Champion at the National Western Stock Show. In addition, her dam is also a maternal sister to the dam of Lot 22 in this offering.



WB PVF Lucy 1052 -  
This many time champion is the dam of Lot 26.



Lot 26 « PVF Lucy 9230

# Lot 27 PVF Proven Queen 9216

Cow 19665520

tattoo: 9216

calved: 08.23.19

	BEPD	WEPD	YEPD	MILK	MARB	RE	SM	SB
EPDs	+2.3	+55	+90	+21	-0.08	+0.96	+45	+119

PVF THE NATURAL 7042

- { PVF Insight 0129
- { PVF Blackbird 3127

- SAV Brilliance 8077
- PVF Missie 790
- PVF Windfall SCC 9005
- ALL PVF Blackbird 645
- Dameron First Class
- RAC Winnie 7456
- PVF Insight 0129
- Dameron PVF Proven Queen 010

PVF PROVEN QUEEN 6241

- { C&C McKinley 3000 EXAR
- { PVF Proven Queen 3175

Style and eye appeal in this daughter of PVF The Natural 7042 produced from a fancy daughter of McKinley tracing to PVF Proven Queen 3175.

PVF Proven Queen 3175 was one of several direct daughters of the foundation donor, Proven Queen 010 sired by PVF Insight 0129, who were selected champions from coast to coast including being named Division Champions at the National Junior Angus Show.



PVF Proven Queen 3175, a maternal granddam of Lot 27.



Lot 27 « PVF Proven Queen 9216



Lot 28 « PVF Proven Queen 9263



PVF Proven Queen 5250, dam of Lot 28.

## Lot 28 PVF Proven Queen 9263

Cow +19671814

tattoo: 9263

calved: 10.10.19

	BEPD	WEPD	YEPD	MILK	MARB	RE	SM	SB
EPDs	+4.4	+60	+101	+17	+0.13	+0.67	+32	+127
WB PENDLETON 708 PVF SWSN	Dameron Best In Class WB PVF SF Lucy 4033				EXG RS First Rate S903 R3 Dameron Northern Miss 3114 PVF Insight 0129 WB PVF Lucy 1052			
PVF PROVEN QUEEN 5250	C&C McKinley 3000 EXAR PVF Proven Queen 2108				Dameron First Class RAC Winnie 7456 PVF Insight 0129 Dameron PVF Proven Queen010			

One of the youngest heifers in the sale is this attractive daughter of Pendleton produced from PVF Proven Queen 5250, who was a many times champion. Another maternal sister to PVF Proven 5250 is the past Illinois Angus Futurity Champion, PVF Proven Queen 6151.



Lot 29 « PVF Missie 9253



PVF Insight 0129, this proven Genex sire is a full brother to the dam of Lot 29.

## Lot 29 PVF Missie 9253

Cow 19666149

tattoo: 9253

calved: 09.30.19

	BEPD	WEPD	YEPD	MILK	MARB	RE	SM	SB
EPDs	+2.9	+52	+76	+18	+0.20	+0.18	+62	+65
PVF SURVEILLANCE 4129	BC Lookout 7024 PVF Ellen 9100				OCC Legend 616L Gibbet Hill Mignonne E37 PVF ALL PAYDAY 729 Hyline Ellen 410			
PVF MISSIE 4183	SAV Brilliance 8077 PVF Missie 790				SAV Bismarck 5682 SAV Blackcap May 5270 PVF New Horizon 001 PVF Miss Raptor 024			

This end-of-September-born daughter of the PVF herd sire, PVF Surveillance 4129 is produced from a dam who is a full sister to one of the all time leading bulls in the Genex line up, PVF Insight 0129.

# Lot 30 PVF Blackbird 9260

Cow 19666154

tattoo: 9260

calved: 10.07.19

	BEPD	WEPD	YEPD	MILK	MARB	RE	SM	SB
EPDs	+2.9	+48	+76	+23	+0.14	+0.25	+43	+92

PVF SURVEILLANCE 4129	{	BC Lookout 7024	OCC Legend 616L
		PVF Ellen 9100	Gibbet Hill Mignonne E37
TDFC TOPLINE BLACKBIRD 4043	{	Dameron PVF Raptor 702	PVF ALL PAYDAY 729
		Nelsons Blackbird 2118	Hyline Ellen 410
			Rito 9FB3 of 5H11 Fullback
			Davis Proven Queen 3026
			BC Lookout 7024
			Nelsons Blackbird 0418

A pedigree combining the PVF herd sire, PVF Surveillance 4129, with the highly maternal Blackbird cow family and produced from a dam bred in the Topline program who combines the popular traits of Raptor and Look Out in her pedigree.



PVF Surveillance 4129, sire of Lots 29, 30 & 31.



Lot 30 « PVF Blackbird 9260

# Lot 31 PVF Blackbird 9270

Cow 19666155

tattoo: 9270

calved: 10.22.19

	BEPD	WEPD	YEPD	MILK	MARB	RE	SM	SB
EPDs	+2.3	+55	+90	+21	-0.08	+0.96	+45	+119

PVF SURVEILLANCE 4129	{	BC Lookout 7024	OCC Legend 616L
		PVF Ellen 9100	Gibbet Hill Mignonne E37
PVF BLACKBIRD 4098	{	SAV Brilliance 8077	PVF ALL PAYDAY 729
		PVF Blackbird 201	Hyline Ellen 410
			SAV Bismarck 5682
			SAV Blackcap May 5270
			PVF New Horizon 001
		PVF Blackbird 020	

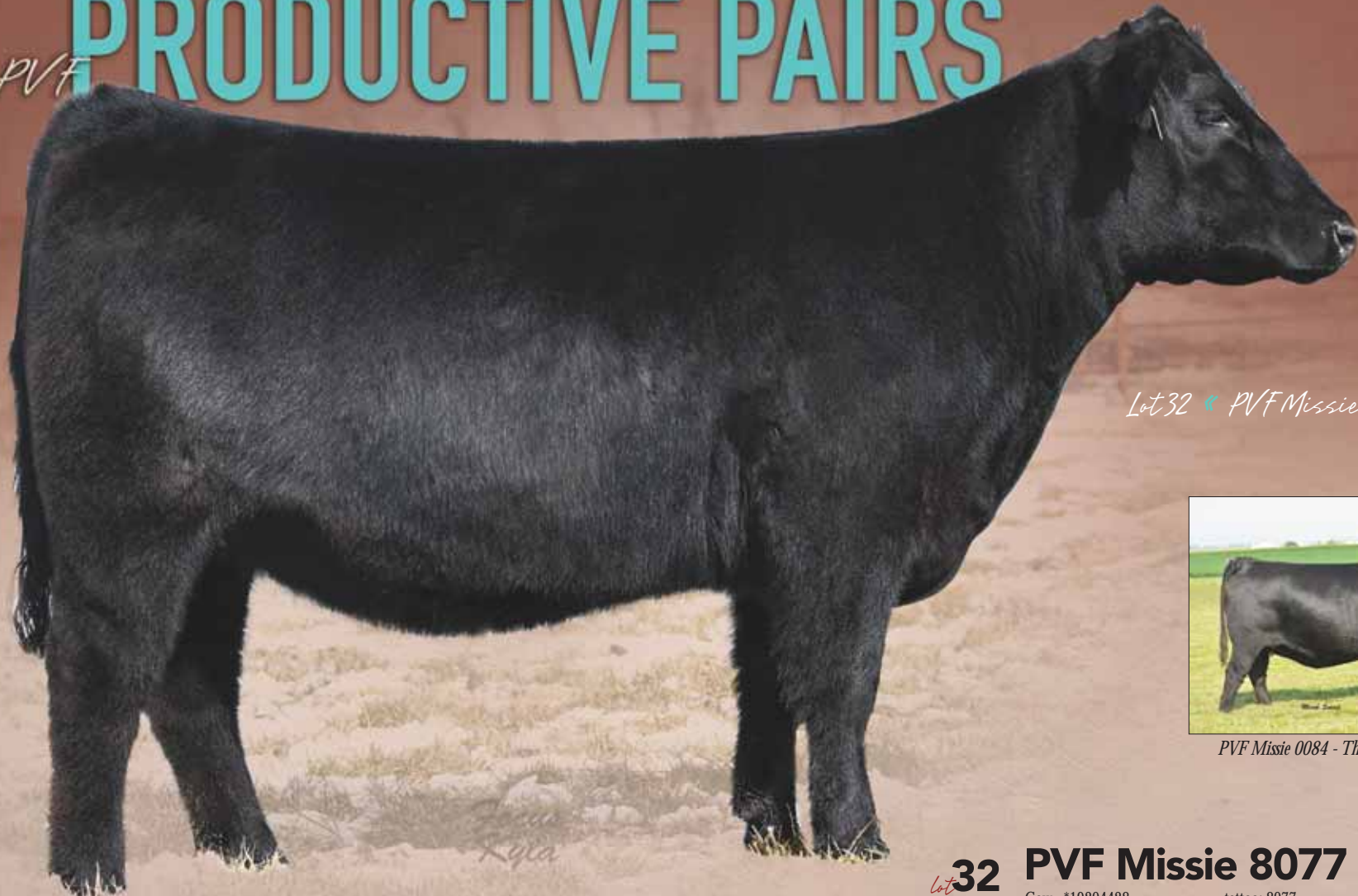
This is the youngest female in the sale who has the style and eye appeal to be very competitive in the mid October class at the NJAS.

She combines the popular PVF Surveillance 4129 with a dam representing multiple generations of proven PVF Blackbird females.



Lot 31 « PVF Blackbird 9270

# PVF PRODUCTIVE PAIRS



Lot 32 ◀ PVF Missie 8077



PVF Missie 0084 - The incredible and influential dam of dam of Lot 32.

One of the very best two-year olds ever offered through the PVF Spring Production Sale is this full sister to PVF Missie 8282 who sold as a highlight in 2019.

Her dam has made an incredible impact in the PVF program as she is a maternal sister to PVF Insight 0129 and the dam of several National Champion females including PVF Missie 4149, who was selected as the Grand Champion Female of the National Junior Angus Show. She is also the dam of the \$100,000, PVF Missie 5216, who was selected Reserve Grand Champion at the NJAS.

Due to calve April 18th to WOODHILL UNION.

## Lot 32 PVF Missie 8077

Cow +\*19204428      tattoo: 8077      calved: 02.23.18

	BEPD	WEPD	YEPD	MILK	MARB	RE	SM	SB
<b>EPDs</b>	+3.7	+64	+114	+24	+0.12	+0.89	+30	+137
<b>COLBURN PRIMO 5153</b>								
<b>PVF MISSIE 0084</b>								

- Dameron First Class
  - Silveiras Saras Dream 1339
- EXG RS First Rate S903 R3
  - Dameron Northern Miss 3114
  - Silveiras Style 9303
  - EXG Saras Dream S609 R3
  - GAR Grid Maker
  - SAV Abigale 0451
  - PVF New Horizon 001
  - PVF Miss Raptor 024

# Lot 33 PVF Missie 8016

Cow +\*19198634

tattoo: 8016

calved: 01.25.18

	BEPD	WEPD	YEPD	MILK	MARB	RE	SM	SB
EPDs	+3.7	+61	+102	+28	+0.12	+0.25	+13	+100
COLBURN PRIMO 5153	Dameron First Class		EXG RS First Rate S903 R3 Dameron Northern Miss 3114 Silveiras Style 9303					
	Silveiras Saras Dream 1339		EXG Saras Dream S609 R3 Stevenson Moneymaker R185					
PVF MISSIE 0053	OSU Currency 8173		OSU Empress 4123 Dameron PVF Raptor 702 PVF Miss Stockman 812					
	PVF Miss Raptor 024							

An outstanding two-year old pair in this package that combines the popular Primo with a dam who produced the past NWSS Reserve Grand Champion, PVF Missie 2018. PVF Missie 2018 also produced the 2016 NJAS Reserve Junior Champion Division IV Female and was named Reserve Grand Champion Owned Heifer at the 2016 Eastern Regional Junior Show.

**LOT 33A** - Sells with a BULL calf at side born 1/21/20 sired by PVF INSIGHT 0129.

*PVF Missie 2018 - This past NWSS Reserve Grand Champion produced to Lot 33.*



*Lot 33 « PVF Missie 8016*

# Lot 34 PVF Blackbird 8036

Cow +\*19203200

tattoo: 8036

calved: 02.04.18

	BEPD	WEPD	YEPD	MILK	MARB	RE	SM	SB
EPDs	+3.4	+53	+86	+10	+0.25	+0.63	+24	+111
COLBURN PRIMO 5153	Dameron First Class		EXG RS First Rate S903 R3 Dameron Northern Miss 3114 Silveiras Style 9303					
	Silveiras Saras Dream 1339		EXG Saras Dream S609 R3 PVF ALL PAYDAY 729					
PVF BLACKBIRD 1167	PVF Windfall SCC 9005		Dameron PVF Proven Queen010 Leachman Saughatchee 3000C PVF Blackbird 201					
	ALL PVF Blackbird 645							

Extra rib and body in this attractive made daughter of Primo whose dam is a full sister to the dam of PVF The Natural 7042.

**LOT 34A** - Sells with a BULL calf at side born 1/24/20 sired by STEVENSON TURNING POINT.

*PVF Blackbird 1167, dam of Lot 34.*



*Lot 34 « PVF Blackbird 8036*



Lot 35 « PVF Missie 8191



Lot 36 « PVF Missie 8166



Lot 37 « PVF Lucy 8141

## 35 PVF Missie 8191

Cow +\*19243053

tattoo: 8191

calved: 04.11.18

	BEPD	WEPD	YEPD	MILK	MARB	RE	SM	SB
EPDs	+3.1	+38	+66	+16	+0.26	+0.61	+28	+109
C&C PRIORITY 1428B EXAR	Dameron First Class		EXG RS First Rate S903 R3		EXG RS First Rate S903 R3			
	Exar Princess 7879		BC 7022 Raven 7965		Dameron Northern Miss 3114			
			Greens Princess 1012		BC 7022 Raven 7965			
PVF MISSIE 1148	PVF Windfall SCC 9005		PVF ALL PAYDAY 729		PVF ALL PAYDAY 729			
	PVF Missie 790		Dameron PVF Proven Queen010		Dameron PVF Proven Queen010			
			PVF New Horizon 001		PVF New Horizon 001			
			PVF Miss Raptor 024		PVF Miss Raptor 024			

This feminine-fronted, beautiful-uddered daughter of Priority is produced from a maternal sister to PVF Insight 0129. In addition, her dam, PVF Missie 1148, produced a maternal sister to this female who was selected Supreme Champion in Houston.

**LOT 35A** - Sells with a HEIFER calf at side born 1/31/20 sired by PVF TCF FROZEN 6078.

## 36 PVF Missie 8166

Cow +\*19243043

tattoo: 8166

calved: 03.28.18

	BEPD	WEPD	YEPD	MILK	MARB	RE	SM	SB
EPDs	++3.8	+48	+1	+22	+0.03	+0.75	+27	+133
DAMERON FIRST CLASS	EXG RS First Rate S903 R3		EXG RS First Rate S903 R3		Exar Lutton 1831			
	Dameron Northern Miss 3114		Dameron PVF Raptor 702		Raftier S Blackcap P909			
			Dameron Miss 550		Dameron PVF Raptor 702			
PVF MISSIE 1148	PVF Windfall SCC 9005		PVF ALL PAYDAY 729		Dameron Miss 550			
	PVF Missie 790		Dameron PVF Proven Queen010		PVF ALL PAYDAY 729			
			PVF New Horizon 001		Dameron PVF Proven Queen010			
			PVF Miss Raptor 024		PVF New Horizon 001			
					PVF Miss Raptor 024			

A maternal sister to Lot 35 sired by the extremely rare and valuable First Class and produced from a dam who is a full sister to PVF Insight 0129, and the dam of a female selected Supreme Champion at the Houston Livestock Show.

**LOT 36A** - Sells with a BULL calf at side born 2/25/20 sired by STEVENSON TURNING POINT

## 37 PVF Lucy 8141

Cow +\*19260248

tattoo: 8141

calved: 03.16.18

	BEPD	WEPD	YEPD	MILK	MARB	RE	SM	SB
EPDs	+5.1	+58	+101	+18	+0.4	+1.04	+22	+142
PVF INSIGHT 0129	SAV Brilliance 8077		SAV Bismarck 5682		SAV Bismarck 5682			
	PVF Missie 790		SAV Blackcap May 5270		SAV Blackcap May 5270			
			PVF New Horizon 001		PVF New Horizon 001			
			PVF Miss Raptor 024		PVF Miss Raptor 024			
PVF LUCY 4189	C&C Priority 1428B EXAR		Dameron First Class		Dameron First Class			
	Thomas Lucy 7360		Exar Princess 7879		Exar Princess 7879			
			SAV 8180 Traveler 004		SAV 8180 Traveler 004			
			Thomas Lucy 4440		Thomas Lucy 4440			

This direct daughter of Insight ranks in the top 4% of the breed for REA EPD and is a maternal sister to PVF Lucy 8225, who was a division winner at the National Western Stock Show, The Atlantic National and the National Junior Angus Show, plus was selected Grand Champion at the Illinois Junior Angus Field Day.

**LOT 37A** - Sells with a BULL calf at side born 2/11/20 sired by STEVENSON TURNING POINT.

# 38 Eathington Georginia 205F

Cow 19336260 tattoo: 205F calved: 02.01.18

	BEPD	WEPD	YEPD	MILK	MARB	RE	SM	SB
EPDs	+3.9	73	119	+19	+0.19	+0.50	+56	+116

PVF SURVEILLANCE 4129 { BC Lookout 7024  
PVF Ellen 9100

EATHINGTON GEORGINIA 801A { Connealy Final Product  
B&J Georgina 0821

OCC Legend 616L  
Gibbet Hill Mignonne E37  
PVF ALL PAYDAY 729  
Hyline Ellen 410  
Connealy Product 568  
Ebonista of Conanga 471  
PVF ALL PAYDAY 729  
B&J Georgina 6621

Added rib and body in this high growth daughter of PVF Surveillance 4129 who ranks in the top 5% of the breed for WW EPD with a 15% ranking for yearling growth. She is backed by the prominent Georgina cow family.

LOT 38A - Sells with a BULL calf at side born 02.01.20 sired by Stevenson Turning Point.



Lot 38 « Eathington Georginia 205F

# 39 PVF Proven Queen 8048

Cow \*19198645 tattoo: 8048 calved: 02.07.18

	BEPD	WEPD	YEPD	MILK	MARB	RE	SM	SB
EPDs	+4.5	+55	+86	+10	+0.16	+0.68	+22	+112

C&C PRIORITY 1428B EXAR { Dameron First Class  
Exar Princess 7879

PVF PROVEN QUEEN 2108 { PVF Insight 0129  
Dameron PVF Proven Queen 010

EXG RS First Rate S903 R3  
Dameron Northern Miss 3114  
BC 7022 Raven 7965  
Greens Princess 1012  
SAV Brilliance 8077  
PVF Missie 790  
Leachman Explorer  
PVF Proven Queen 602

This feminine-fronted, big-ribbed daughter of Priority is produced from a daughter of Insight who was a member of one of the most successful embryo flushes in the history of the PVF program. Several sisters were selected champions and PVF Proven Queen 2108 herself was named a Division Champion at the National Junior Angus Show.

LOT 39A - Sells with a BULL calf at side born 2/5/20 sired by STEVENSON TURNING POINT.



Lot 39 « PVF Proven Queen 8048

# 40 PVF Proven Queen 8059

Cow \*19204421 tattoo: 8059 calved: 02.15.18

	BEPD	WEPD	YEPD	MILK	MARB	RE	SM	SB
EPDs	+0.6	60	+115	+28	+0.17	+0.78	+17	+135

EATHINGTON SUB-ZERO { Connealy Capitalist 028  
KP Miss Proven Queen 21

PVF PROVEN QUEEN 6150 { PVF Insight 0129  
PVF Proven Queen 3033

SAV Final Answer 0035  
Prides Pita of Conanga 8821  
BC Matrix 4132  
PVF All Proven Queen 503  
SAV Brilliance 8077  
PVF Missie 790  
Dameron First Class  
PVF Proven Queen 602

A low birth daughter of Sub-Zero who also excels for growth ranking in the top 15% of the breed for YW EPD.

Her dam blends the traits of Insight with the Proven Queen cow family, and she was Reserve Junior Yearling Champion at both the NWSS and NALIE.

Will sell with a calf at side (Lot 40A) sired by SCHIEFELBEIN WARRANTY.



Lot 40 « PVF Proven Queen 8059



Lot 41 « PVF TC Blacklist 9130



PVF Blacklist 7077, sire of Lot 41.



Lot 42 « PVF Frozen 9067



PVF TCF Frozen 6078, sire of Lot 42.

## Lot 41 PVF Blacklist 9130

Bull +\*19566223

tattoo: 9130

calved: 03.17.19

	BEPD	WEPD	YEPD	MILK	MARB	RE	SM	SB
EPDs	+2.3	+58	+110	+30	-0.17	+0.94	+35	+135
PVF BLACKLIST 7077	<ul style="list-style-type: none"> <li>PVF Insight 0129</li> <li>PVF Blackbird 3070</li> </ul>		<ul style="list-style-type: none"> <li>SAV Brilliance 8077</li> <li>PVF Missie 790</li> <li>Dameron First Class</li> <li>ALL PVF Blackbird 645</li> </ul>					
PVF PROVEN QUEEN 2106	<ul style="list-style-type: none"> <li>Dameron PVF Raptor 702</li> <li>FCF SCC PVF Proven Queen 615</li> </ul>		<ul style="list-style-type: none"> <li>Rito 9FB3 of 5H11 Fullback</li> <li>Davis Proven Queen 3026</li> <li>PVF New Horizon 001</li> <li>Dameron PVF Proven Queen010</li> </ul>					

A deep-ribbed, big-middled son of the popular PVF Blacklist 7077 produced from the proven donor by Raptor, PVF Proven Queen 2106. He ranks in the top 10% of the breed for REA EPD.

## Lot 42 PVF Frozen 9067

Bull 19593871

tattoo: 9067

calved: 02.16.19

	BEPD	WEPD	YEPD	MILK	MARB	RE	SM	SB
EPDs	+1.1	+63	+109	+26	-0.18	+1.11	+35	+150
PVF TCF FROZEN 6078	<ul style="list-style-type: none"> <li>EATHINGTON SUB-ZERO</li> <li>PVF Proven Queen 4032</li> </ul>		<ul style="list-style-type: none"> <li>Connealy Capitalist 028</li> <li>KP Miss Proven Queen 21</li> <li>PVF Insight 0129</li> <li>PVF Proven Queen 2106</li> <li>SAV Brilliance 8077</li> </ul>					
PVF BLACKBIRD 7113	<ul style="list-style-type: none"> <li>PVF Insight 0129</li> <li>PVF Blackbird 3127</li> </ul>		<ul style="list-style-type: none"> <li>PVF Missie 790</li> <li>PVF Windfall SCC 9005</li> <li>ALL PVF Blackbird 645</li> </ul>					

Extra growth and frame in this low birth weight son of Frozen who also ranks in the top 2% of the breed for REA EPD.

His dam is by the high REA sire in the Genex line up, PVF Insight 0129, and his next dam is the influential donor, PVF Blackbird 3127.

# Lot 43 PVF Inauguration 9107

Bull \*19566407

tattoo: 9107

calved: 03.05.19

EPDs	BEPD	WEPD	YEPD	MILK	MARB	RE	SM	SB
	++1.6	+40	+78	+26	-0.02	+0.76	+28	+115

**PVF INAUGURATION 6174** { Dameron First Class  
PVF Missie 790

**EXAR PRINCESS 8063** { PVF Insight 0129  
Greens Princess 1012

EXG RS First Rate S903 R3  
Dameron Northern Miss 3114  
PVF New Horizon 001  
PVF Miss Raptor 024  
SAV Brilliance 8077  
PVF Missie 790  
Greens Premium 7578  
Greens Princess 7418

A smooth-made son of the PVF herd sire, PVF Inauguration 6174, produced from the same daughter of Insight who is also the dam of Lots 14 and 15 and backed by the past NWSS Champion, Princess 1012.



*PVF Inauguration 6174,  
sire of Lot 43.*



*Lot 43 « PVF Inauguration 9107*

# Lot 44 PVF Eventide 9070

Bull 19676557

tattoo: 9070

calved: 02.17.19

EPDs	BEPD	WEPD	YEPD	MILK	MARB	RE	SM	SB
	+2.7	+53	+99	+20	+0.26	+0.76	+37	+128

**ECR RESOURCE 623** { S A V Resource 1441  
ECR 6753 Peg 331

**PVF MISSIE 5210** { C&C McKinley 3000 EXAR  
PVF Missie 0084

Rito 707 of ideal 3407 7075  
S A V Blackcap May 4136  
B C Lookout 7024  
LaGrand Peg 6753  
Dameron First Class  
RAC Winnie 7456  
S A V Bismarck 5682  
PVF Missie 790

A grandson of the proven Pathfinder sire in the Genex line-up, SAV Resource 1441, produced from a dam by McKinley who is a direct daughter of PVF Missie 0084. In addition, his dam is a maternal sister to the past NJAS Grand Champion, PVF Missie 4149.



*ECR Resource 623, sire of Lot 44.*



*Lot 44 « PVF Eventide 9070*

PVF  
**MARVEL**  
 9185



Lot 46  
 PVF Marvel 9185

SELLING A 10% SEMEN INTEREST -- Leased to Select Sires, Inc.  
 Marvel and his brother were two of the most talked about bulls in The Yards during the 2020 National Western Stock Show. They are also both grandsons of the influential PVF donor, PVF Missie 0084, and their dam PVF Missie 5245 is the most powerful young donor in the PVF lineup and is destined to replace 0084 as the foundation Missie.

His flawless design, which blends tremendous rib shape, extra body, added dimension in his hip structure, and structural soundness, combine with a pedigree that will provide the ingredients to make him an impact sire for those looking for style in a beef bull. He garnered the attention and business of Select Sires, Inc.



*Lot* **46 PVF Marvel 9185**

Bull +\*19566408

tattoo: 9185

calved: 04.27.19

	BEPD	WEPD	YEPD	MILK	MARB	RE	SM	SB
EPDs	+2.4	+55	+100	+25	+0.41	+0.90	+33	+166

- PVF BLACKLIST 7077**
- { PVF Insight 0129
  - { PVF Blackbird 3070
- PVF MISSIE 5245**
- { C&C McKinley 3000 EXAR
  - { PVF Missie 0084
- SAV Brilliance 8077
  - PVF Missie 790
  - Dameron First Class
  - ALL PVF Blackbird 645
  - Dameron First Class
  - RAC Winnie 7456
  - SAV Bismarck 5682
  - PVF Missie 790

PVF  
**REDDINGTON**  
 9186



Lot 46 «  
 PVF Reddington 9186

*Lucas Kyla*

SELLING A 10% SEMEN INTEREST -- Leased to ABS Global, Inc.

Reddington and his flush brother are two of the most exciting young sires ever produced at PVF. They made an impact at the 2020 NWSS Yards, where he was acquired for lease by ABS Global.

His dam was herself and is a maternal sister to many of the most successful show heifers ever produced at PVF. This young, up-and-coming Missie cow, is a direct daughter of the powerful donor, PVF Missie 0084.

A combination of style and eye appeal with extra power and base width all blend to provide the presence of a real herd bull look.



**lot 47 PVF Reddington 9186**

Bull +\*19566409 tattoo: 9186 calved: 04.29.19

	REPD	WEPD	YEPD	MILK	MARB	RE	SM	SB
<b>EPDs</b>	+2.3	+59	+96	+25	+0.29	+0.98	+42	+145

- PVF BLACKLIST 7077**
  - PVF Insight 0129
  - PVF Blackbird 3070
- PVF MISSIE 5245**
  - C&C McKinley 3000 EXAR
  - PVF Missie 0084
- SAV Brilliance 8077
  - PVF Missie 790
  - Dameron First Class
  - ALL PVF Blackbird 645
  - Dameron First Class
  - RAC Winnie 7456
  - SAV Bismarck 5682
  - PVF Missie 790

Prairie View Farms  
10788 N. 250 E. Road  
Gridley, IL 61744



10th Annual Production Sale

*Prairie View Farms*

**APRIL 3, 2020**

Friday at 6:30 p.m. at the farm, Gridley, Illinois



[www.pvfangus.com](http://www.pvfangus.com)

ALAN & THERESA MILLER, 217.840.6935 | [pvfangus@gmail.com](mailto:pvfangus@gmail.com) | ORLAN & CAROL  
BRANDON & CATHY JONES, 309.370.1081 |  
KYLE CHRISLAW, 608.751.9640 | CURTIS HARSH, 740.272.0339