

FLOW



ANNUAL FALL PRODUCTION *Bull & Female Sale*

LIMOUSIN LIM-FLEX ANGUS

Saturday, September 19, 2020

NEW SALE TIME - 3:00 P.M. E.S.T.

Live Online at CCI.Live



Edwards
LAND & CATTLE CO.

ANNUAL FALL PRODUCTION
Bull & Female Sale

LIMOUSIN LIM-FLEX ANGUS

Saturday, September 19, 2020

NEW SALE TIME - 3:00 P.M. E.S.T.
Live Online at CCI.Live

SCHEDULE OF EVENTS

** To schedule an appointment for viewing the sale offering, contact Nicholas Edwards at 910.290.1424

SATURDAY, SEPTEMBER 19TH

Cattle available for viewing

3:00 p.m. LIVE ONLINE AUCTION STARTS (E.S.T.)
online at CCI.LIVE

The Edwards Land and Cattle Family is excited and pleased to welcome you to our Annual Fall Production Sale. As usual the sale will be held down on the farm at our sale located at 314 Willard Edwards Road, Beulaville, North Carolina. We know this has been a challenging time for our cattle producers this year both health wise and economically. All of you are in our constant prayers and concerns as we face the challenges that have been presented to us as a nation. Unfortunate the COVID - 19 makes this sale a little more challenging, so we will have ALL CATTLE ON VIDEO. We are extremely pleased to host you at our sale facility anytime that you would like to view the cattle all week, just call for an appointment. We will be offering you some of the best quality genetics in the Limousin breed, along with very high-quality Lim-flex, and Angus. At Edwards Land and Cattle, we are committed to producing the kind of genetics that will be useful and profitable in your operations.

As you are aware, we are a family operation that takes great pride in our cattle and would only like to provide you with quality Limousin, Angus and Lim-flex genetics that will work in any cattle operation. Our number one goal is to create a long-term relationship with our customers; therefore, we only provide you with our finest stock. All of our cattle sale under the standard guarantee of the North American Limousin Foundation and the National Angus Association. If you have any questions pertaining to any of the genetics or any other thing about our cattle, please feel free to give us a call. If you need financing or trucking arrangements, we will gladly assist you. If you are unable to attend, please feel free to call us or any of the sale management to assist you on sale day.

Because of COVID - 19 we will not hold a reception on Friday night, but cattle viewing at the sale barn will be allowed all week. The whole family looks forward to seeing you. If you need any help with directions or accommodations, please don't hesitate to give us a call. Each of you will continue to be in our thoughts. Please join us either on line in person as we try to bring a little normalcy to our world.

Dexter Edwards



Dexter and Nicholas Edwards
Dexter, 910.385.6192
Nicholas, cell: 910.290.1424
NicholasELC@hotmail.com

314 Willard Edwards Road, Beulaville, NC 28518

OFFERING
100 LOTS

LIMOUSIN
LIM-FLEX
ANGUS

- 52 Fall & Spring Bred Females
- 6 Herd Sire Prospects
- Semen packages on ELCX Kings Landing
- 10 Fall Bred Angus Females
- 31 Fall Bred Commercial Females

GUARANTEE

All cattle sell under the standard guarantee of the North American Limousin Foundation.

FINANCING

For financing options please contact Dexter Edwards at 910.385.6192, Nicholas Edwards at 910.290.1424 or Randy Ratliff at 615.330.2735.

TRUCKING

A trucking company will be on hand sale day to assist with any trucking that might be needed. Edwards Land & Cattle Co. will see to it that cattle will be delivered to several central locations to accommodate anyone that lives throughout the United States and Canada.

TERMS & CONDITIONS

Terms of the sale are cash unless satisfactory credit arrangements have been made prior to the sale. A representative will be on hand sale day if your wishes are to insure your purchases. Please note: The sale manager is only an agent for the seller and has no responsibility other than those involved in conducting the sale. All persons who attend the sale do so at their own risk. Neither the sale manager nor Edwards Land & Cattle Co. assume liability, legal or otherwise for, any accidents which may occur.

SIGHT UNSEEN PURCHASE AGREEMENT

If you are unable to attend the sale and want to speak with Dexter or Nicholas Edwards or Randy Ratliff then please don't hesitate to call. They will provide you with a complete satisfaction guarantee for the have purchased. If within two weeks from the date of the sale you are not satisfied with your purchased and how they were described to you then the Edwards family will gladly take the animal back.

DRIVING DIRECTIONS

From Raleigh-Durham International Airport (RDU) to Edwards Land and Cattle Sale Facility take interstate I 40 east towards Wilmington/Benson. Continue on 40 East until exit 373 (Magnolia/Kenansville) turn left on 903 towards Kenansville, stay on 903 until intersection of Hwy 24. Take Hwy 24 East towards Beulaville. Stay on hwy 24 through Beulaville; go approximately 6 miles to Willard Edwards Rd on the left. The Sale Facility will be located approximately 1.5 miles on the left.

From Albert Ellis Airport (OAJ) take left onto NC HWY 111 to Haw Branch Rd. Take Haw Branch Rd to Hwy 24 west. Willard Edwards Rd will be approximately 4 miles on the right. The Sale Facility will be located approximately 1.5 miles on the left.

From Wilmington International Airport (ILM) take I-40 West to Exit 385 (Wallace/Beulaville). Take right towards Beulaville on Hwy NC-41. Travel 18 miles to intersection of 41/24 take hwy 24 east approximately 6 miles to Willard Edwards Rd on the left. The Sale Facility will be located approximately 1.5 miles on the left.

PAYMENTS

All cattle must be paid for immediately following the conclusion of the sale. R & R Marketing Company will now be accepting credit cards the day of the sale.

SALE DAY PHONES

Dexter Edwards.....910.385.6192 Nicholas Edwards..910.290.1424
Randall O. Ratliff ..615.330.2735 Mark Smith515.229.5227

AUCTIONEER ... Eddie Birks (#9202)270.991.6398

ACCOMMODATIONS

Hampton Inn910.347.3400
1032 Hampton Inn Way, Jacksonville, NC 28546

Hilton Garden Inn910.346.2400
1016 Jacksonville Pkwy, Jacksonville, NC 28546

SALE ORDER & SUPPLEMENTAL INFORMATION

Friday, September 18th the sale order and supplemental information will be posted at www.RRMktg.com for your convenience.

SALE CONSULTANT



Mark Smith
515.229.5227 • grgenetics@aol.com

WATCH THE SALE & BID ONLINE

Online bidding provided in partnership with CCI.LIVE. Join us to watch the sale or bid online. Please create your account and obtain credentials prior to auction date. Login not necessary to view the auction live.



SALE MANAGEMENT



Randall O. Ratliff, 615.330.2735
Randy@RRMktg.com • www.RRMktg.com
PO Box 60097, Nashville, TN 37206
(L#2845)

If you need assistance with your purchases or want to discuss the genetics selling then please feel free to contact R & R Marketing Company. As a paid marketing agent for Edwards Land & Cattle we take pride in the opportunity to work closely with this program. We can assist you with your phone order and/or handle your bid in the most confidential manner. Email, call or text and we will be more than happy to assist.

2019 NAILE
Limousin Show
Premier Breed and
Premier Exhibitor for
the Sixth straight year



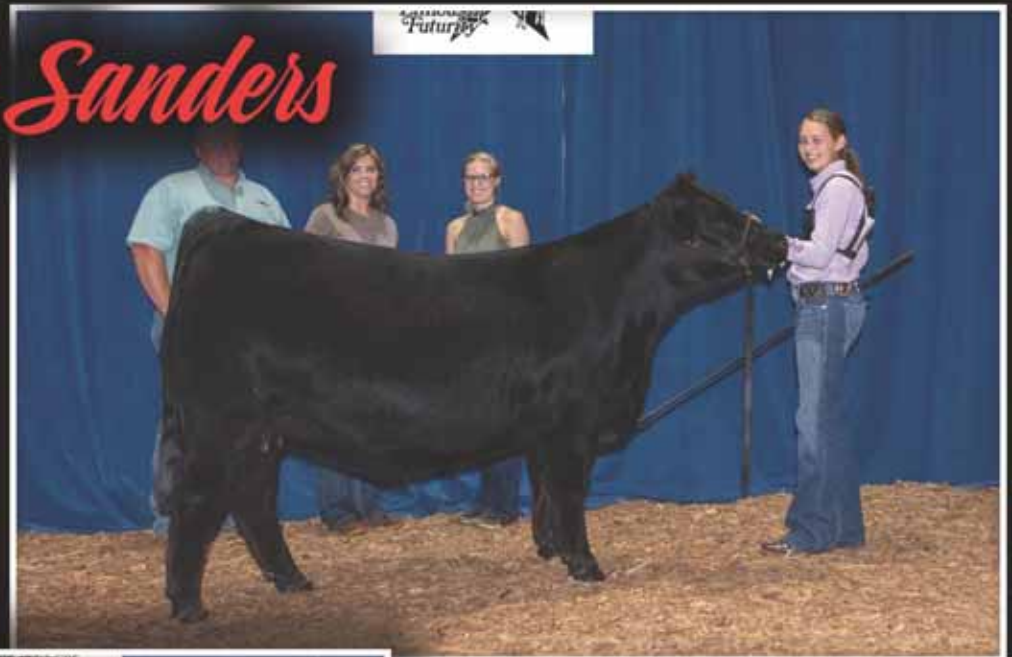
Champions

*Linhart
Family
Limousin*



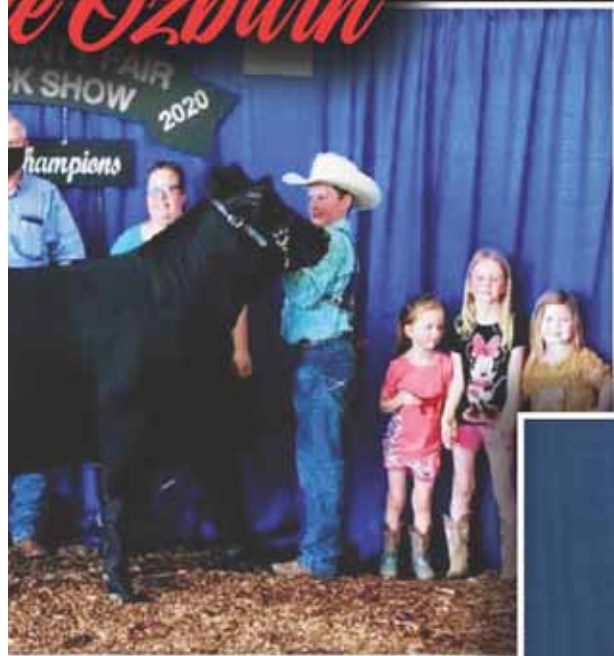
ELCX Gracious is a superb daughter of ELCX Kings Landing. She is a 65.5% Lim-Flex female and full sib to lot 3, ELCX 950G. Her dam is the elite producer of ours, AUTO Poem 273Y. She was a top selling female at \$30,000 and was purchased by the Linhart Family Limousin program in Leon, IA.

Sydney Sanders



Congratulations to Jake Ozburn, Unionville, TN for winning the 4th best heifer at the recent Wilson County Fair. He won with ELCX Gemma 326G, a 59% Lim-Flex, double polled, homozygous black daughter of ELCX Caesar 331C from ELCX Barely Legal 362B. We appreciate their purchase of an ELCX heifer and wish them luck in the future with this heifer.

Jake Ozburn



Congratulations to Sydney Sanders for showing the All-American Futurity Division V champion. The heifer is ELCX For The Win 323F, a daughter of ELCX Kings Landing from SSTO Aim High 323A. This double homozygous 65% Lim-Flex is one that we were proud to have raised and are so pleased with the job that Sydney has done with her.



Kinnick Paulsen

Congratulations to Kinnick Paulsen for winning the reserve grand champion female of the 2020 All American Futurity. She was the top selling female of the breed for 2019 and couldn't be more happy with the way she is being presented. She is ELCX Gone Shoppin 923G, a daughter of EXAR Classen from the past national champion female ELCX Twilight.

She was recently named the 2020 Iowa State Fair reserve supreme champion heifer as well. Congratulations to Kinnick Paulsen of Iowa.



Sire, MAGS WLR Usual Suspect



Dam, DFCL HBHPC 16S

6

PB Limousin (87) Cow DP / Black ELCX 16E NPF 2278475 04.20.17

ELCX Elusive Suspect 16E 1

	CEP	BW	WW	YW	MA	CEM	SC	ST	DOC	CW	RE	YG	MS	\$MTI
EPD	10	2.2	56	86	23	6	0.45	6	8	21	0.9	-0.53	-0.23	43.1
%Rank	60	70	65	55	55	50	70	95	85	30	95	>95	15	35

MAGS SASQUATCH
MAGSWL USUAL SUSPECT 538U
 MAGS PHANTOMS PRIZE

JCL LODESTAR 27L
DFLC HBHPC 16S
 DFCL HBPC 25L

EXLR NEW GENERATION 071M
 MAGS FRUITFUL 487M
 GPFF BLAQUE RULON
 ALCM KOOL TUNES
 HUNTS HI-LITER 245G
 LOGAN'S CHEERLEADER 280G
 DFCL DOUBLE SHOT BPB 41E
 DALTONS EDITH ERICA 250

P.E. 12.04.2019 to 5.01.2020 to ELCX Caesar 331C (56% P/HB)

ELCX Elusive Suspect 16E is a female that will completely stop you in your tracks. She is dead level in her hip design, explosive in her rib shape and beautiful through her front one third. The amount of donor female quality and potential in this female is unsurpassable. She's just drop dead gorgeous in her lines, powerfully built and so fluid in her movement. This is the type of female that high end herds are built around. Her sire, MAGSWL Usual Suspect is a MAGS Sasquatch son out of the iconic MAGS Phantoms Prize female. Her dam is a JCL Lodestar daughter. She is double black and double polled. Don't miss your opportunity to have a female of this caliber grazing your pastures.



Lim-Flex (75) Cow DP / HB PBRS 489B LFF 2064119 03.21.14

PBRS Best In Class 489B 2

	GED	BW	VWV	YW	MA	CEM	SC	ST	DOC	CW	RE	YG	MS	SMTI
EPD	13	-0.6	52	71	17	6	0.45	13	11	16	0.61	-0.43	-0.12	44.64
%Rank	20	20	85	95	85	55	95	30	55	80	80	30	80	90

- | | |
|---|---|
| <p>MAGS YIP</p> <ul style="list-style-type: none"> MAGS THE GENERAL AUTO CARMINDA 656S S A V BISMARCK 5682 PBRS0111X MAGS NEW GAMES 169N | <ul style="list-style-type: none"> AUTO DOLLAR GENERAL 122R EXLR LUVLY 821M JCL LODESTAR 27L AUTO CARMINDA 872P G A R GRID MAKER S A V ABIGALE 0451 MAGS LITTLE BROTHER MAGS GAMES WE PLAY 245L |
|---|---|

P.E. 12.04.2019 to 5.01.2020 to ELCX Caesar 331C (56% P/HB)

This female is probably the most powerfully built female in this offering. She is the epitome of what a high quality female looks like and one that we just can't say enough about. PBRS Best In Class 489B is a MAGS Yip daughter out of an SAV Bismarck female. We love this female's massive body capacity, rib shape and her substance of bone. This is a female that will produce valuable offspring that will convert efficiently without lacking body or functionality. Her birthweight EPD ranks in the top 25% of the breed. She is a 75% Lim-Flex female that is homozygous black and double polled.



Lim-Flex (54) Cow HP / HB ELCX 419F LFF 2159684 04.01.18

ELCX Full House 419F 3

	CED	BW	WW	YW	MA	CEM	SC	ST	DOC	CW	RE	YG	MS	\$MTI
EPD	11	2.5	75	126	22	6	0.57	10	15	47	0.63	-0.19	0.11	58.39
%Rank	55	90	15	10	45	55	90	65	20	5	80	40	50	30

MAGS YIP
PBRS BUNK HOUSE 48B
LBAR SHAWNEE 602

MAGS WINSTON
MAGS DELAURA ET
MAGS XTRA REST

MAGS THE GENERAL
AUTO CARMINDA 656S
TWIN VALLEY PRECISION E161
SUNSET SHAWNEE 3905
BT CROSSOVER 758N
MAGS STRAWBERRY
DHVO DEUCE 132R
MAGS UNREST

P.E. 12.04.2019 to 5.01.2020 to ELCX Caesar 331C (56% P/HB)

Better have this gal at the top of your list when sale day rolls around. ELCX Full House 419F is a PBRS Bunk House 48B daughter out of a MAGS Winston female, MAGS Delaura. Not only do elite genetics run through her blood, she's got the look to hang with the absolute best of them. She is explosive in her rib shape and center third, powerfully built and dead level in her topline. She's smooth shouldered, terrific on her feet and legs and tracks with astounding confidence when you get her in motion. Her yearling weight EPD ranks in the top 10% of the breed and her weaning weight EPD ranks in the top 15%.



9

Int 4

Lim-Flex (25) Cow Polled / HB LSTO 556C LFF 2094765 09.22.15

LSTO Cookie 556C ET

4

	GED	BW	VWV	YW	MA	CEM	SC	ST	DOC	CW	RE	YG	MS	SMTI
EPD	10	1.7	75	118	26	5	1.35	11	12	44	0.63	-0.07	0.36	66.53
%Rank	65	75	5	5	20	75	15	50	45	4	75	>95	10	3

COLEMAN PRODUCTION 608
COLE WINDFALL 144W
 COLE MISS FIRSTDOWN 6162S

CONNEALY CONSENSUS 7229
EXAR FOREVER LADY 2169
 EXAR FOREVER LADY 0586

GAR PRECISION 1680
 COLEMAN BLACKCAP 211
 CLONE-COLE FIRST DOWN 46D
 COLE 18K
 CONNEALY CONSENSUS
 BLUE LILLY OF CONANGA 16
 DAMERON FIRST CLASS
 EXAR FOREVER LADY 2627

P.E. 1.30.2020 – 5.20.2020 to Riverstone Exodus (PB HP/HB)

Talk about major cow power! LSTO Cookie 556C is a COLE Windfall daughter that turns everyone's head. She is out of EXAR Forever Lady 2169, a Connealy Consensus 7229 daughter. When we think of a perfectly constructed set of numbers, this is the female that immediately comes to mind. Her marbling EPD is in the top 5% of the breed, her weaning weight and yearling weight EPDs rank in the top 10% and her milk ranks in the top 15% of the breed. Whew! Not only is this female a complete rockstar on paper- she's a whale of a female in person. The amount of natural dimension, substance of bone and depth of body this female has is more than impressive. She is a 25% Lim-Flex female that is homozygous black and heterozygous polled. This gal is one that will take a program to the next level immediately!



Full sib, MAGS Aviator

10

Lim-Flex (59) Cow HP / HB ELCX 2419D LFF 2098556 02.26.16

MAGS Delaura ET **5**

	EPD	CED	BW	WW	YW	MA	CEM	SC	ST	DOC	CW	RE	YG	MS	\$MTI
	13	1.3	69	111	21	7	0.25	9	16	42	0.86	-0.29	0.05	55.30	
%Rank	20	60	15	10	55	35	>95	75	10	10	30	65	45	35	

- BT CROSSOVER 758N
- MAGS WINSTON**
- MAGS STRAWBERRY
- DHVO DEUCE 132R
- MAGS XTRA REST**
- MAGS UNREST
- C A FUTURE DIRECTION 532I
- BT ROYAL PRIDE 237G
- EXLR NEW GENERATION 071M
- MAGS FRUITFUL 487M
- GPF BLAQUE RULON
- AMY JO DHAN 20L
- MAGS REMOTE
- HA LADY 1091

P.E. 2.25.2020 to 5.20.2020 to HWCB Eye of the Storm 406E (71% P/HB)
 MAGS Delaura has everything stacked in her favor. She is a MAGS Winston daughter out of MAGS Xtra Rest, the phenomenal DHVO Deuce female. She is a full sib to one of the breed's greatest A.I. sires, MAGS Aviator. She is so well designed, sleek-fronted, square-hipped and explosive in her center body. This donor female is one that will take a program to the top almost overnight- she's that good, folks! Her yearling weight ranks in the top 10% of the breed and her weaning weight EPD ranks in the top 20%. She is a 59% Lim-Flex female that is double homozygous.

Semen Packages



11



lot 6

% Limousin (81) Bull HP / HB ELCX 559D NXM 2102783 02.12.16

ELCX Kings Landing 599D 6

	CED	BW	VWV	YW	MA	CEM	SC	ST	DOC	CW	RE	YG	MS	SMTI
EPD	8	2.0	58	88	22	5	0.60	9	13	18	0.81	-0.47	-0.31	40.30
%Rank	80	65	55	50	60	65	55	60	40	55	80	70	55	65

- | | |
|---|--|
| <p>DHVO DEUCE 132R
 MAGS XYLOID
 BOHI RHONDA 314R</p> <p>MAGSWL USUAL SUSPECT 538U
 WLR PRADA
 AUTO REBECA 292S</p> | <p>GPFF BLAQUE RULON
 AMY JO DHAN 20L
 EXLR NEW GENERATION 071M
 DAVIS ROSETTA 9514
 MAGS SASQUATCH
 MAGS PHANTOMS PRIZE
 LESF ASPHALT 9N
 EXLR REBECA 1019P</p> |
|---|--|

LOT 6, 6A, 6B, 6C, 6D, 6E ... Selling 10 unit semen packages for \$1,500.

Contact any member of the marketing team or Nicholas or Dexter Edwards
 ELCX Kings Landing 599D is one of the finest Limousin bulls in the breed. He's a higher percentage Limousin bull (81%) so the options are endless with this guy! His sire, MAGS Xyloid has sired more elite individuals in the breed than most. This bull's dam, WLR Prada is one of the most prolific female's today. ELCX King's Landing is homozygous black and homozygous polled. We are offering 10 unit semen packages for \$1500. Don't miss this rare opportunity to acquire some of the finest genetics in the breed today!

Pick of Flush Brothers



Dam, National Champion, ELCX Twilight 114X

12

This pick of four flush brothers doesn't happen very often. These DHVO Deuce sons are ones that will completely revamp an entire herd of females. Their dam is a JCL Lodestar daughter, DFCL HBHPC- so you know they've got the proven genetics in their favor. These flush brothers are full siblings to one of the greatest Purebred females to hit the ground, ELCX Twilight 114X, the 2013 National Stock Show Purebred Champion Limousin female. We love the style, balance and sheer power these bulls have already. They're long in their spine, square hipped and tremendous on their feet and legs. You'll want to be sure to check these four flush brothers out when sale day rolls around because they're just flat good!

- LOT 7 ... BW: 76 lbs.; WW: 655 lbs. on 07.01.2019; YW: 1,215 lbs.
- LOT 8 ... BW: 80 lbs.; WW: 605 lbs. on 07.01.2019; YW: 1,106 lbs.
- LOT 9 ... BW: 72 lbs.; WW: 609 lbs. on 07.01.2019; YW: 1,205 lbs.
- LOT 10 ... BW: 78 lbs.; WW: 640 lbs. on 07.01.2019; YW: 1,215 lbs.

PB Limousin (87) Bull Polled / HB ELCX 907G -- 01.15.19

ELCX Gritt 907G ET **7**

PB Limousin (87) Bull Polled / HB ELCX 904G NPM 2170442 01.13.19

ELCX Gronk 904G ET **8**

PB Limousin (87) Bull Polled / HB ELCX 903G -- 01.13.19

ELCX Greek 903G ET **9**

PB Limousin (87) Bull Polled / HB ELCX 908G -- 01.15.19

ELCX Grander 908G ET **10**

	CED	BW	WW	YW	MA	CEM	SC	ST	DOC	CW	RE	YG	MS	\$MTI
EPD	11	3.5	77	121	19	6	1.05	9	16	32	1	-0.52	-0.40	43.1
%Rank	45	95	2	1	95	50	10	80	20	4	85	>95	60	35

<p>GPF BLAQUE RULON DHVO DEUCE 132R AMY JO DHAN 20L</p> <p>JCL LODESTAR 27L DFCL HBHPC 1S DFCL HBPC 25L</p>	<p>BLACK DIAMOND QUAIL RUN RAMONA BP BLACK CAT DHAN 152G GPF AMBER JO HUNTS HI-LITER 245G LOGAN'S CHEERLEADER 280G DFCL DOUBLE SHOT BPB 41E DALTONS EDITH ERICA 250</p>
---	--

Herd Sire Prospects



Sire, Colburn Primo 5153



Dam, WLR Tainted Love 746X



13

Lim-Flex (50) Bull DP / Black ELCX 958G -- 10.25.19

ELCX Gilligan 958G 11

	CED	BW	WW	YW	MA	CEM	SC	ST	DOC	CW	RE	YG	MS	SMTI
SIRE	11	1.3	68	98	8	7	0.70	10	12	23	0.10	0.20	0.59	70.17
DAM	9	3.5	62	90	22	6	0.35	7	14	18	1.33	-0.86	-0.63	32.91

- DAMERON FIRST CLASS
- COLBURN PRIMO 5153**
- SILVEIRAS SARAS DREAM 1339
- WULFS URBAN COWBOY 2149R
- WLR TAINTED LOVE 746X**
- MAGS PHANTOMS PRIZE
- EXG RS FIRST RATE S903 R3
- DAMERON NORTHERN MISS 311
- SILVEIRAS STYLE 9303
- BR MIDLAND
- WULFS REALTOR 1503R
- WULFS MEADOW GRASS 2149M
- GPFF BLAQUE RULON
- ALCM KOOL TUNES

Here is a Colburn Primo 5153 son that you'll appreciate for his genetics and flashy presence. His dam is none other than the famed WLR Tainted Love 746X female. The amount of center body this bull has is second to none. We love his neatness of lines, rugged structure and his smooth, yet flashy front end. This is a more moderate-framed bull that will make them functional, efficiency and super flashy! You won't want to miss this elite opportunity when sale day rolls around because this guy is destined for greatness. He is a 50% Lim-Flex bull that is double polled.

BW: 60 lbs.; WW: 707 lbs.



14

Lim-Flex (50) Bull DP / Red ELCX 17G LFM 2278469 11.12.19

ELCX Goodnred 17G

12

	CED	BW	WW	YW	MA	CEM	SC	ST	DOC	CW	RE	YG	MS	SMTI
SIRE	12	1.4	68	108	19	7	1.02	9	10	45	0.78	-0.21	0.32	64.17
DAM	35	65	35	30	80	35	45	80	80	10	55	80	10	10

JCL DRIVER 617D
 COTTAGE LAKE BORDER AGENT
 JCL KEILMA LNLM 909A
 G A R PROPHET
ELCX CALLIE 17 C
 SPRING CREEKS LUVLY 3017A

CFLX WILD CARD
 LAL MARILYN MONROE 42W
 MAGS EAGLE
 PBRS UNBELIEVABLE 8149U
 C R A BEXTOR 872 5205 608
 G A R OBJECTIVE 1885
 EXAR TITLELIST T011
 EXLR LUVLY 187T

This herd sire prospect will be at the top of everyone's list come sale day. ELCX Goodnred 17G is out of JCL Driver 617D, the Cottage Lake Border Agent son. His dam, ELCX Callie 17C is a GAR Prophet female. Quality runs deep in this guy's pedigree. This bull is so long in his spine, smooth in his shoulder design and filled with natural rib shape and dimension. We love how this guy is constructed from the ground up. His structure is near flawless and quite powerful. When this one stops and plants his foot, it's more than impressive. He is so flashy and everyone admires the way his head and neck come out of the top of his shoulder. He is a double polled, 50% Lim-Flex bull. His marbling EPD ranks in the top 10% of the breed, his weaning weight EPD is in the top 20% and yearling weight in the top 25%. ELCX Goodnred 17G is a top notch herd sire prospect that makes parting with him quite difficult!

BW: 69 lbs.; WW: 610 lbs.

*Elite
Bred Heifer*



Dam, MAGS Xanthopsias



15

Lim-Flex (37) Cow DP / HB ELCX 713G LFF 2171855 04.05.19

ELCX Gracie 713G **13**

	CED	BW	WW	YW	MA	CEM	SC	ST	DOC	CW	RE	YG	MS	SMTI
SIRE	10	2.3	66	97	14	6	0.75	9	13	23	0.41	-0.08	0.20	57.68
DAM	70	85	40	55	>95	55	80	80	45	65	>95	>95	25	30

- DAMERON FIRST CLASS
- COLBURN PRIMO 5153**
- SILVEIRAS SARAS DREAM 1339
- DHVO DEUCE 132R
- MAGS XANTHOPSIAS**
- BOHI RHONDA 314R
- EXG RS FIRST RATE S903 R3
- DAMERON NORTHERN MISS 311
- SILVEIRAS STYLE 9303
- EXG SARAS DREAM S609 R3
- GPF BLAQUE RULON
- AMY JO DHAN 20L
- EXLR NEW GENERATION 071M
- DAVIS ROSETTA 9514

P.E. 5.25.2020 – 8.20.2020 to ELCX Gone Fishin 929G (50% B/P)

If you're looking for an elite female to introduce to your program, this is your female! ELCX Gracie 713G is a Colburn Primo 5153 daughter out of MAGS Xanthopsias, a DHVO Deuce female. You'll understand as soon as you see this female why everyone falls in love with her. She is designed with so much elegance, length of body and powerful capacity that she's destined for greatness. This is a female that we simply can't say enough about. Her marbling EPD ranks in the top 25% of the breed. She is a 37% Lim-Flex female and is homozygous black and double polled.

Fall Bred Heifers



PB Limousin (50) Cow HP / HB ELCX 933G NPF 2265188 05.06.19

ELCX Good N Gone 9336 ET **14**

	EPD	CED	BW	WW	YW	MA	CEM	SC	ST	DOC	CW	RE	YG	MS	\$MTI
	5	4.2	77	118	25	2	0.75	4	11	39	0.85	-0.44	-0.38	43.01	
%Rank	>95	>95	2	2	30	>95	35	>95	70	1	>95	>95	55	35	

AUTO CRUZE 132X
AUTO REAL DEAL 150B
 AUTO LUCKIE TOO 423Y

MAGS ZYLOID
ELCX CHARMER 566C ET
 WLR PRADA

MAGS THE GENERAL
 AUTO REBECA 292S
 WLR DIRECT HIT
 TYEJ DB SERENITY
 DHVO DEUCE 132R
 BOHI RHONDA 314R
 MAGSWL USUAL SUSPECT 538U
 AUTO REBECA 292S



Sire, AUTO Real Deal 150B

P.E. 5.25.2020 – 8.20.2020 to ELCX Gone Fishin 929G (50% B/P)

ELCX Good N Gone is an AUTO Real Deal daughter out of the great ELCX Charmer female. ELCX Charmer is the MAGS Xyloid and WLR Prada daughter that continues to produce some of the most solid breeding pieces. We love this gal's elite look and design. She has a big, powerful hip, a capacious center body and a beautiful front one third. We believe in this female's ability to continue in her elite pedigree's footsteps of generating high performing, functional and stylish individuals. This female is homozygous black and homozygous polled. Her weaning weight and yearling weight EPDs both rank in the top 2% of the entire breed.



Lim-Flex (37) Cow DP / DB ELCX 142E LFF 2155791 03.14.17

ELCX Ember 142E **15**

	EPD	CED	BW	WW	YW	MA	CEM	SC	ST	DOC	CW	RE	YG	MS	\$MTI
	12	0.3	60	96	19	8	1.1	9	15	26	0.28	-0.01	0.59	69.85	
%Rank	35	35	70	60	80	20	35	80	20	55	>95	>95	1	2	

G A R PROPHET
WOODSIDE RITO 4050 OF 0M3
 RITA OF RITA 5F56 PRED

MAGS XYLOID
ELCX CEE 142 C
 JLWM PAM 142Y

C R A BEXTOR 872 5205 608
 G A R OBJECTIVE 1885
 G A R PREDESTINED
 RITA 5F56 OF 1I98 FD
 DHVO DEUCE 132R
 BOHI RHONDA 314R
 C L BURBANK
 JLWM MINX-MAX 4261P



Sire, Woodside Rito 4050 of 0M3

A.I. 12.01.2019 to ELCX Kings Landing 599D (81% HP/HB); P.E. 12.18.19 to 4.05.2020 to ELCX Bullet Proof 438B (50% HP/HB)

ELCX Ember 142E is a double polled and double black daughter of Woodside Rito 4050 of 0M3. Her dam is a MAGS Xyloid daughter. This female's marbling EPD ranks at the very top of the entire breed. She is about as long topped as you can make a female. She's upheaded, beautiful in her lines and built to last from the ground up. We love her powerful hip and the amount of rib shape this female has. A solid breeding decision that will impact the future of your operation!

Lim-Flex (65) Cow HP / HB ELCX 856F LFF 2160069 11.28.18

ELCX Fresh Queen 856F ET 16

	CED	BW	WW	YW	MA	CEM	SC	ST	DOC	CW	RE	YG	MS	SMTI
EPD	11	1.2	57	86	23	8	1.05	11	12	21	0.65	-0.35	-0.05	48.35
%Rank	55	60	80	80	35	20	45	50	55	75	80	45	70	85

MAGS XYLOID
ELCX KINGS LANDING 599 D ET
 WLR PRADA

MYTTY IN FOCUS
SBLX UNKNOWN 104U
 MAGS MANUELA

DHVO DEUCE 132R
BOHI RHONDA 314R
MAGSWL USUAL SUSPECT 538U
AUTO REBECA 292S
S A F FOCUS OF ER
MYTTY COUNTESS 906
EXLR LIMITED EDITION 765J
AUTO CITY NIGHTS 214H

A.I. 12.13.2019 to MAGS Firestone 218F (56% HP/B); P.E. 12.20.19 to 5.20.20 to ELCX Bullet Proof 438B (50% HP/HB)

ELCX Fresh Queen 856F is a female that will be at the top of everyone's short list for sale day. She is a double homozygous daughter of the great ELCX Kings Landing and the leading donor, SBLX Unknown. Unknown is the daughter of MYTTY In Focus and from the great MAGS Manuela female. She is a 65% Lim-Flex female that will generate individuals full of power, design and functionality.



Sire, ELCX Kings Landing



Dam, SBLX Unknown

Limousin (12.5) Cow HP / DB ELCX 798F -- 11.03.18

ELCX Flora 798F 17

	CED	BW	WW	YW	MA	CEM	SC	ST	DOC	CW	RE	YG	MS	SMTI
SIRE	17	-1.4	80	128	22	12	1.40	11	14	51	0.23	0.30	1.24	96.97
DAM	12	2.1	79	122	26	7	1.10	5	13	49	0.84	-0.12	0.46	71.66

C R A BEXTOR 872 5205 608
GAR PROPHET
 G A R OBJECTIVE 1885

MAGS UNHOOKS
LVLS ALL ME 798A
 LVLS 798R

BAR EXT TRAVELER 205
CRA LADY JAYYE 608 498 S EASY
SS OBJECTIVE T510 0T26
G A R 1407 NEW DESIGN 223
BASIN FRANCHISE P142
MAGS MARQUEE
BON VIEW NEW DESIGN 1407
BLACKCAP V935

P.E. 1.30.2020 to 4.05.2020 to ELCX Benchwarmer 363B (25% HP/HB)

ELCX 798F is a GAR Prophet daughter that we've loved since the day she hit the ground. Her dam, LVLS All Me 798A is a MAGS Unhooks daughter. She is homozygous polled and double polled and 12.5% Limousin. The functionality of the female is second to none- breed her to a purebred bull and you'll have a whale of a calf!

ELCX

Represents a family owned operation that is backed with integrity and faith needed to earn your business!

PB Limousin (87) Cow Polled / HB ELCX 842F NPF 2277856 10.21.18

ELCX FIRST 842F ET 18

	CED	BW	WW	YW	MA	CEM	SC	ST	DOC	CW	RE	YG	MS	SMTI
EPD	14	-0.7	61	94	19	8	0.95	9	14	9	0.55	-0.41	-0.23	43.44
%Rank	20	20	45	35	95	20	15	80	45	80	>95	>95	15	35

DHVO DEUCE 132R
TMCK DURHAM WHEAT 6030X
 MAGS STRAWBERRY PIE

JCL LODESTAR 27L
DFLC HBHPC 1S
 DFLC HBPC 25L

GPFF BLAQUE RULON
AMY JO DHAN 20L
TNUH BLUE PRINT 245H
MAGS PIE IN THE SKY
HUNTS HI-LITER 245G
LOGAN'S CHEERLEADER 280G
DFLC DOUBLE SHOT BPB 41E
DALTONS EDITH ERICA 250

P.E. 1.30.2020 to 4.05.2020 to ELCX Benchwarmer 363B (25% HP/HB)

ELCX First 842F is a TMCK Durham Wheat female that deserves your full attention. This female's dam, DFLC 1S is a JCL Lodestar daughter. Her marbling EPD ranks in the top 15% of the breed and her birthweight ranks in the top 20%. This 87% Limousin female is full of opportunity. With time trusted genetics so deep in her pedigree, you can be confident in her producing ability. She is homozygous black and heterozygous polled.



Sire, TMCK Durham Wheat 6030X



Dam, DFLC HBHPC 1S



Lim-Flex (53) Cow HP / HB JWB 453F LFF 2170528 12.13.18

JWB Dixie 453F

19

	CED	BW	WW	YW	MA	CEM	SC	ST	DOC	CW	RE	YG	MS	\$MTI
EPD	11	0.8	56	81	18	6	1.31	9	9	22	0.52	-0.21	0.16	54.27
%Rank	55	50	85	90	85	55	20	80	90	70	95	80	30	50

EF XCESSIVE FORCE
ELCX DELTA FORCE 603D ET
 MAGS UNLIKELY CANDIDATE

D A TRAVELER 004 703
 CFLX MOLLYS IMAGE
 G A R PREDESTINED
 LOGAN'S CHEERLEADER 280G
 MAGS WIGGLER
 WLR URSULA 499U
 CALO BRICKYARD 902W
 MAGS SKYLINE

P.E. 3.30.2020 to 8.20.2020 to HWCB Eye of the Storm 406E (71% P/HB)
 JWB Dixie 453F is a double homozygous female that you've got to get your eyes on. She is a daughter of ELCX Delta Force 603D, an EF Xcessive Force son and out of a WLR Game of Thrones daughter, JWB Cally 453D. This is a female that catches everyone's attention. Her beautiful design, angular lines and depth of body are hard to match. She is a 53% Lim-Flex female.

PB Limousin (87) Cow HP / HB ELCX 656F NPF 2278477 11.22.18

ELCX Full of It 656F

20

	CED	BW	WW	YW	MA	CEM	SC	ST	DOC	CW	RE	YG	MS	\$MTI
EPD	12	0.2	58	91	19	6	0.73	10	14	21	0.83	-0.51	-0.29	41.18
%Rank	35	30	60	45	95	50	35	75	45	30	>95	>95	25	50

ALTER EGO
VL DAYTONA 603D
 RMKR X'S AND O'S 086X

ENGD ZIP LINE 2515Z
ELCX DESIGNER 656D ET
 DFCL HBHPC 1S

EF XCESSIVE FORCE
 CISL TEQUILA SUNRISE 7003
 RMKR UNFORGETTABLE 847U
 RMKR MISS STARBURST 500R
 AHCC WESTWIND W544
 RTTB ROYALTY 2505R
 JCL LODESTAR 27L
 DFCL HBPC 25L

P.E. 1.30.2020 to 4.05.2020 to ELCX Benchwarmer 363B (25% HP/HB)

ELCX Full of It 656F is out of VL Daytona 603D, the Alter Ego son that is so versatile and packed full of power. This female's dam, ELCX Designer 656D is an ENGD Zip Line 2515Z daughter. She is homozygous black and homozygous polled. The genetic potential this female has isn't available to the public just any day of the week, don't miss your chance!

Lim-Flex (37) Cow HP / DB ELCX 373F LFF 2278480 09.02.18

ELCX Fiery 373F

21

	CED	BW	WW	YW	MA	CEM	SC	ST	DOC	CW	RE	YG	MS	\$MTI
EPD	13	0.1	61	92	20	8	1.19	9	16	22	0.55	-0.21	0.46	66.78
%Rank	25	30	65	70	70	20	35	80	15	70	90	80	2	4

BOHI TITELIST 7050T
TW FIRE N' ICE
 MAGS UPPER SAUNTER

G A R PREDESTINED
44 BLACKCAP 81375
 SOUTHERN BLACKCAP Z38 S17

AUTO DOLLAR GENERAL 122R
 CARROUSELS PINA COLADA
 LH RODEMASTER 338R
 MAGS SAUNTER
 B/R NEW DESIGN 036
 G A R EXT 4206
 RITO 112 OF 2536 RITO 616
 VT 1407 NEW DESIGN Z38

A.I. 12.22.2019 to SSTO Best Bet (43% P/HB); P.E. 1.30.2020 to 4.05.2020 to ELCX Benchwarmer 363B (25% HP/HB)

This TW Fire N' Ice daughter is quite the elite package. ELCX Fiery 373F ranks in the elite 2% of the entire breed for her marbling EPD. She is homozygous black and double polled. Don't let this one sneak by come sale day because we believe she'll be one of the best producers when calving season rolls around!



Lim-Flex (56) Cow HP / DB ELCX 361E LFF 2139641 06.20.17

ELCX Enchantment 361E 22

	CED	BW	WW	YW	MA	CEM	SC	ST	DOC	CW	RE	YG	MS	\$MTI
EPD	11	0.5	57	85	20	6	1.16	10	13	24	0.7	-0.29	0.02	50.33
%Rank	55	40	80	85	70	55	35	65	45	65	70	60	55	75

S A V BRILLIANCE 8077
ELCX BACARDI 427B ET
 WLR TAINTED LOVE 746X

MAGS XYLOID
ELCX BELLFLOWER 361B
 MAGS TAPESTRY

S A V BISMARCK 5682
 S A V BLACKCAP MAY 5270
 WULFS URBAN COWBOY 2149U
 MAGS PHANTOMS PRIZE
 DHVO DEUCE 132R
 BOHI RHONDA 314R
 MYTTY IN FOCUS
 MAGS GRETCHEN 143L

P.E. 12.04.2019 to 3.23.2020 to ELCX Caesar 331C (56% P/HB)

This is an ELCX Bacardi 427B daughter that you won't be able to take your eyes off of. ELCX Enchantment 361E is a 56% Lim-Flex female that will be at the top of any program she's introduced to. She has such an elite pedigree that speaks for itself. ELCX Bacardi is a son of the high performing SAV Brilliance. Her dam, ELCX Bellflower 361B is a MAGS Xyloid daughter out of the great MAGS Tapestry female. When females are built this powerfully, most of the time they lack femininity. This gal truly does not- she's massive bodied, huge bellied and elegantly designed through her front one third. We simply can't say enough about this one. Put your trust in ELCX Enchantment 361E and she'll bring you offspring of the highest quality. She is homozygous polled and double black.

*Riverstone Crown
Royal daughters*



Lim-Flex (75) Cow HP / HB ELCX 844F LFF 2270473 10.22.18

ELCX First Crown 844F ET **23**

	CED	BW	VWV	YW	MA	CEM	SC	ST	DOC	CW	RE	YG	MS	\$MTI
EPD	13	0.2	46	65	23	9	0.99	12	13	-1	0.73	-0.44	-0.24	38.77
%Rank	25	35	>95	>95	35	10	55	40	45	>95	65	25	>95	>95

TMCK DURHAM WHEAT 6030X
RIVERSTONE CROWN ROYAL
 HSF YOUR FANTASY

CONNEALY REFLECTION
CPDF ZELLY 9228Z
 CELL WATER LILLY 9228W

DHVO DEUCE 132R
 MAGS STRAWBERRY PIE
 MAGS WAR ADMIRAL
 HSF TINKERBELL
 BON VIEW NEW DESIGN 878
 HAPPY GRILL OF CONANGA 62
 DHVO DEUCE 132R
 MAGS RED KISS

P.E. 1.30.2020 to 4.05.2020 to ELCX Benchwarmer 363B (25% HP/HB)
 ELCX First Crown 844F ET is a daughter of none other than the great Riverstone Crown Royal. He is the TMCK Durham Wheat son that has taken the breed by storm! This female ranks in the top 25% of the breed for her birthweight EPD. She is a 75% Lim-Flex and homozygous black and homozygous polled.

20



Sire of Lots 23 - 25, Riverstone Crown Royal

Dam of Lots 23 - 24, CPDF Zelly 9228Z

Lim-Flex (75) Cow DP / HB ELCX 851F --- 10.24.18

ELCX Fairly Royal 851F **24**

	CED	BW	VWV	YW	MA	CEM	SC	ST	DOC	CW	RE	YG	MS	\$MTI
EPD	13	0.2	46	65	23	9	0.99	12	13	-1	0.73	-0.44	-0.24	38.77
%Rank	25	35	>95	>95	35	10	55	40	45	>95	65	25	>95	>95

TMCK DURHAM WHEAT 6030X
RIVERSTONE CROWN ROYAL
 HSF YOUR FANTASY

CONNEALY REFLECTION
CPDF ZELLY 9228Z
 CELL WATER LILLY 9228W

DHVO DEUCE 132R
 MAGS STRAWBERRY PIE
 MAGS WAR ADMIRAL
 HSF TINKERBELL
 BON VIEW NEW DESIGN 878
 HAPPY GRILL OF CONANGA 62
 DHVO DEUCE 132R
 MAGS RED KISS

P.E. 1.30.2020 to 8.20.2020 to HWCB Eye of the Storm 406E (71% P/HB)
 If you're wanting to add a Riverstone Crown Royal daughter to your arsenal- look no further than this beauty! Crown Royal and his full sib, Riverstone Charmed have taken the Limousin breed by storm. They're dominating forces that are hard to come by, so now is your chance to add such elite genetics to your program! ELCX 851F is a 75% Lim-Flex daughter of CPDF Zelly 9228Z, a Connealy Reflection female.



PB Limousin (87) Cow DP / HB ELCX 906F NPF 2159637 03.01.18

ELCX Fairly 906F

25

	CED	BW	WW	YW	MA	CEM	SC	ST	DOC	CW	RE	YG	MS	\$MTI
EPD	10	2	56	84	24	6	0.88	8	11	9	0.91	-0.59	-0.29	30.48
%Rank	60	65	65	60	45	50	25	85	70	80	95	90	>95	95

TMCK DURHAM WHEAT 6030X
RIVERSTONE CROWN ROYAL
 HSF YOUR FANTASY

LH RODEMASTER 338R
WLR ORIGINAL SIN
 MAGS PHANTOMS PRIZE

DHVO DEUCE 132R
 MAGS STRAWBERRY PIE
 MAGS WAR ADMIRAL
 HSF TINKERBELL
 JCL LODESTAR 27L
 VERMILION E BLACKBIRD9546
 GPF BLAQUE RULON
 ALCM KOOL TUNES

P.E. 12.20.2019 to 3.23.2020 to ELCX Caesar 331C (56% P/HB)

If you're looking for a daughter of Riverstone Crown Royal, here she is! ELCX Fairly 906F is a homozygous black and double polled female. She is one of the most complete females we're offering. She's as long as a freight train down her topline, level in her hip and as balanced as one can be. We love her feet and leg build, her femininity and overall design. Her depth of body and spring of rib is what she's known for around here. This is a female that we expect big things from! Her milk EPD ranks in the top 20% of the breed.



Sire of Lots 26, 27 & 28, AUTO Direct Drive 107D



Dam of Lot 26, SBLX Unknown 104U

Lim-Flex (68) Cow Polled / HB ELCX 819F LFF 2158229 05.01.18

ELCX Fantasy 819F ET **26**

	CED	BW	WW	YW	MA	CEM	SC	ST	DOC	CW	RE	YG	MS	\$MTI
EPD	12	1.7	59	88	24	8	1.30	5	9	22	0.86	-0.39	-0.14	45.94
%Rank	35	75	75	80	30	20	20	>95	90	70	80	35	85	90

- WLR DIRECT HIT
- AUTO DIRECT DRIVE 107D ET**
- AUTO REBECA 292S
- MYTTY IN FOCUS
- SBLX UNKNOWN 104U**
- MAGS MANUELA
- KRVN NASKAR 013N
- MAGS NIGHT AMBUSH
- LESF ASPHALT 9N
- EXLR REBECA 1019P
- S A F FOCUS OF E R
- MYTTY COUNTESS 906
- EXLR LIMITED EDITION 765J
- AUTO CITY NIGHTS 214H

P.E. 12.20.2019 to 3.23.2020 to ELCX Caesar 331C (56% P/HB)
 ELCX Fantasy 819F ET is an AUTO Direct Drive daughter out of the phenomenal SBLX Unknown 104U female. Unknown is from the powerful mating of MYTTY In Focus and MAGS Manuela. Her milk EPD ranks in the top 25% of the breed. She is a homozygous black and heterozygous polled female.

Lim-Flex (75) Cow DP / HB ELCX 398F LFF 2267407 11.08.18

ELCX Frisky 398F **27**

	CED	BW	WW	YW	MA	CEM	SC	ST	DOC	CW	RE	YG	MS	\$MTI
EPD	11	2.1	59	90	22	6	-	6	11	23	0.62	0-0.37	-0.23	42.54
%Rank	55	85	75	75	45	55	-	>95	70	65	85	40	95	>95

- WLR DIRECT HIT
- AUTO DIRECT DRIVE 107D ET**
- AUTO REBECA 292S
- MAGS XYLOID
- ELCX COUNT ON ME 398 C**
- PBRs 389W
- KRVN NASKAR 013N
- MAGS NIGHT AMBUSH
- LESF ASPHALT 9N
- EXLR REBECA 1019P
- DHVO DEUCE 132R
- BOHI RHONDA 314R
- JCL LODESTAR 27L
- BT ECHO 33M

P.E. 1.30.2020 to 4.05.2020 to ELCX Benchwarmer 363B (25% HP/HB)
 ELCX Frisky 398F is a 75% Lim-Flex daughter of the genetic powerhouse, AUTO Direct Drive. Direct Drive is from the phenomenal mating of WLR Direct Hit and AUTO Rebeca 292S. This female's dam is a MAGS Xyloid daughter. She is homozygous black and double polled.

Lim-Flex (62) Cow Polled / DB ELCX 355F -- 10.15.18

ELCX First Drive 355F **28**

	CED	BW	WW	YW	MA	CEM	SC	ST	DOC	CW	RE	YG	MS	\$MTI
SIRE	11	3.0	62	92	24	6	1.10	-2	7	21	0.82	-0.54	-0.50	35.16
DAM	12	0.7	79	125	24	7	-	7	16	51	0.84	-0.16	0.24	63.93

- WLR DIRECT HIT
- AUTO DIRECT DRIVE 107D ET**
- AUTO REBECA 292S
- TW FIRE N' ICE
- ELCX LADY A W355A**
- 44 EVER LADY W355
- KRVN NASKAR 013N
- MAGS NIGHT AMBUSH
- LESF ASPHALT 9N
- EXLR REBECA 1019P
- BOHI TITLELIST 7050T
- MAGS UPPER SAUNTER
- STEVENSON MONEYMAKER 1427
- THREE TREES EVER LADY S08

P.E. 1.30.2020 to 4.05.2020 to ELCX Benchwarmer 363B (25% HP/HB)
 ELCX 355F is a 62% Lim-Flex daughter of the powerful AUTO Direct Drive 107D. Direct Drive is the WLR Direct Hit son that has sired so many top dollar individuals. This female's dam, ELCX Lady A is a TW Fire N' Ice daughter. She is double black and polled. ELCX 355F is backed by some of the finest genetics in the breed and we're excited to see what she can do for your program!

*TW Fire N' Ice
daughters*

Lim-Flex (62) Cow HP / DB ELCX 331F LFF 2159697 05.14.18

ELCX Fly 331F

29

	CED	BW	WW	YW	MA	CEM	SC	ST	DOC	CW	RE	YG	MS	\$MTI
EPD	14	-0.3	66	100	24	7	0.75	8	16	25	0.65	-0.31	0.07	54.96
%Rank	15	25	40	45	30	35	80	85	15	60	80	55	45	45

BOHI TITILELIST 7050T
TW FIRE N' ICE
 MAGS UPPER SAUNTER

MAGS YIP
PBRS ALICE 331A
 BUFORD LUCY 9302

AUTO DOLLAR GENERAL 122R
 CARROUSELS PINA COLADA
 LH RODEMASTER 338R
 MAGS SAUNTER
 MAGS THE GENERAL
 AUTO CARMINDA 656S
 J BAR 7 ALLIANCE 6597
 J BAR 7 MISS TRAVELER 686

P.E. 12.04.2019 to 3.23.2020 to ELCX Caesar 331C (56% P/HB)

Holy smokes! This is another TW Fire N' Ice daughter that you'll fall in love with. ELCX Fly 331F is a 62% Lim-Flex female that is homozygous polled and double black. Folks, they don't come this beautifully designed very often, but when they do- they're showstoppers, just like this! We love this females beautiful lines, dead level hip and her feminine front one third. She stands on a near-perfect structure and her body capacity and depth are out of this world! For sure one of our absolute favorite females. Her milk EPD ranks in the top 20% of the breed and her birthweight ranks in the top 30%. ELCX Fly 331F is as 'fly' as they come around here!

Lim-Flex (62) Cow HP / DB ELCX 806F LFF 2159681 11.10.18

ELCX Fire Queen 806F

30

	CED	BW	WW	YW	MA	CEM	SC	ST	DOC	CW	RE	YG	MS	\$MTI
EPD	15	-0.7	59	87	28	9	0.82	8	15	18	0.78	-0.39	0.01	51.40
%Rank	10	15	75	80	10	10	70	85	20	85	55	35	60	65

BOHI TITILELIST 7050T
TW FIRE N' ICE
 MAGS UPPER SAUNTER

CALO BRICKYARD 902W
ELCX VICTORIA 306Z
 MAGS TIMELESS

AUTO DOLLAR GENERAL 122R
 CARROUSELS PINA COLADA
 LH RODEMASTER 338R
 MAGS SAUNTER
 SCHILLING'S TALLADEGA
 EXG E839 1407 M175 LS
 AUTO DOLLAR GENERAL 122R
 TWIN EAGLES PRIDE 405P

A.I. 11.30.2019 to ELCX Balancer 170Z (34% HP/HB); P.E. 1.03.2020 to 4.04.2020 to ELCX Fully Royal 451F (75% DP/HB)

Now this gal is straight fire! ELCX Fire Queen 806F is a homozygous polled and double black daughter of TW Fire N' Ice and out of a CALO Brickyard female, ELCX Victoria 306Z. Fire Queen has some impressive numbers- her milk EPD ranks in the top 4% of the breed and her birthweight ranks in the top 15%. She is a 62% Lim-Flex female.



23

Lot 29



Morris

Sire of Lots 29 & 30, TW Fire N' Ice



Grandam of Lot 31, ELCX Underthecover 201U



Lim-Flex (62) Cow DP / DB ELCX 201F LFF 2159641 03.07.18

ELCX Finleigh 201F

31

	CED	BW	WW	YW	MA	CEM	SC	ST	DOC	CW	RE	YG	MS	\$MTI
EPD	12	1.3	61	91	25	6	0.95	6	14	14	0.8	-0.41	0.04	53.34
%Rank	35	65	65	70	20	55	55	>95	30	95	50	30	55	55

BOHI TITELIST 7050T
TW FIRE N' ICE
 MAGS UPPER SAUNTER
 CALO BRICKYARD 902W
ELCX UNDERCOVER 201Y
 SBLX UNDERTHECOVERS 201U
 AUTO DOLLAR GENERAL 122R
 CARROUSELS PINA COLADA
 LH RODEMASTER 338R
 MAGS SAUNTER
 SCHILLING'S TALLADEGA
 EXG E839 1407 M175 LS
 G A R PREDESTINED
 ELMW GINNIE P58G

P.E. 12.20.2019 to 3.23.2020 to ELCX Caesar 331C (56% P/HB)

ELCX Finleigh 201F is a terrific daughter of TW Fire N' Ice and ELCX Undercover 201Y. Undercover is a daughter of CALO Brickyard 902W and SBLX Underthecovers 201U. SBLX Underthecovers 201Y is the big-league donor and daughter of GAR Predestined and a tremendous female ELMW Ginnie P58G. This female ranks in the top 20% of the breed for her milk EPD. She is a 62% Lim-Flex female and she is double black and double polled.

Lim-Flex (62) Cow DP / DB ELCX 401F LFF 2278472 11.20.18

ELCX Fourth Hour 401F

32

	CED	BW	WW	YW	MA	CEM	SC	ST	DOC	CW	RE	YG	MS	\$MTI
EPD	13	0.7	66	96	23	9	0.95	7	16	19	0.82	-0.44	0.01	53.93
%Rank	25	45	40	60	35	10	55	95	15	80	45	25	60	55

BOHI TITELIST 7050T
TW FIRE N' ICE
 MAGS UPPER SAUNTER
 CONNEALY IMPRESSION
ELCX BROWSE 401B ET
 MAGS SARAFINA
 AUTO DOLLAR GENERAL 122R
 CARROUSELS PINA COLADA
 LH RODEMASTER 338R
 MAGS SAUNTER
 CONNEALY REFLECTION
 PEARL PAMMY OF CONANGA 19
 EXLR EXCELLANTE 251L
 CARROUSELS MAVIS 2214M

P.E. 2.25.2020 to 4.05.2020 to ELCX Benchwarmer 363B (25% HP/HB)

ELCX Fourth Hour 401F is an exciting TW Fire N' Ice daughter. This female's dam, ELCX Browse 401B is a Connealy Impression daughter out of an EXLR Excellante 251L female, MAGS Sarafina. She ranks in the top 25% of the breed for her milk EPD and she is double polled and double black.

LVLS Bank
Account daughters

Lim-Flex (65) Cow Polled / DB ELCX 901G LFF 2170440 01.12.19

ELCX Guest Account 901G ET **33**

	CED	BW	WW	YW	MA	CEM	SC	ST	DOC	CW	RE	YG	MS	SMTI
EPD	7	2.9	62	101	26	4	0.6	8	6	34	1.01	-0.34	0.15	57.24
%Rank	>95	95	60	45	15	90	85	85	>95	30	15	50	30	35

MAGS WAZOWSKI
LVLS BANK ACCOUNT 8116B
 LVLS WILMA 8116W

DHVO DEUCE 132R
 BOHI RED ROBIN 282R
 LVLS TOP CRITERIA 8862P
 LVLS 8115T
 DFCL BPB 31C
 DFCL BPC 12C
 T C DIVIDEND 963
 HILL CREST EDITH ERICA 50

DFLC DOUBLE SHOT BPB 41E
DFLC HBPC 25L
 DALTONS EDITH ERICA 250

P.E. 12.28.2019 to 8.20.2020 to ELC Twisted EX C561 (Purebred Angus)
 ELCX Guest Account 901G ET is a daughter of LVLS Bank Account, the MAGS Wazowski son that continues to produce great individuals like this female. She is built as flawless as any. She's long in her spine, explosive in her center body and tracks as graceful as we've ever seen. We love this female's look and incredibly gentle nature. Her milk EPD ranks in the top 10% of the breed. She is homozygous black and heterozygous polled and 62% Lim-Flex.

Lim-Flex (62) Cow Polled / DB ELCX 905G -- 01.15.19

ELCX Grand Account 905G **34**

	CED	BW	WW	YW	MA	CEM	SC	ST	DOC	CW	RE	YG	MS	SMTI
EPD	15	-0.7	59	87	28	9	0.82	8	15	18	0.78	-0.39	0.01	51.40
%Rank	10	15	75	80	10	10	70	85	20	85	55	35	60	65

MAGS WAZOWSKI
LVLS BANK ACCOUNT 8116B
 LVLS WILMA 8116W

DHVO DEUCE 132R
 BOHI RED ROBIN 282R
 LVLS TOP CRITERIA 8862P
 LVLS 8115T
 DFCL BPB 31C
 DFCL BPC 12C
 T C DIVIDEND 963
 HILL CREST EDITH ERICA 50

DFLC DOUBLE SHOT BPB 41E
DFLC HBPC 25L
 DALTONS EDITH ERICA 250

A.I. 3.20.2020 to PBRs Bunk House 48B (50% HP/HB); P.E. 3.20.2020 to 4.05.2020 to ELCX Fully Royal 451F (75% DP/HB)

This LVLS Bank Account female, ELCX 905G is a 62% Lim-Flex female that is a full sibling to ELCX Guest Account 901G. We love the build and body capacity this female exhibits. She's great on her feet and legs and flawless when you get her in motion. She'll produce offspring with functionality and power.



Sire, LVLS Bank Account 8116B



Dam of Lot 33 & 34, DFCL HBPC 25L,

*AUTO Christy
8889R daughters*



Lim-Flex (52) Cow HP / Black ELCX 726E LFF 2135460 04.06.17

ELCX En Time 726E ET

35

	CED	BW	WW	YW	MA	CEM	SC	ST	DOC	CW	RE	YG	MS	\$MTI
EPD	13	1.0	82	134	23	6	0.60	9	14	33	0.96	-0.34	0.10	61.51
%Rank	25	55	3	2	35	55	85	80	30	30	50	20	40	15

TMCK HYDRAULIC 17Y
TMCK ARCHITECT 031A
TMCK LA VEDA 909Y

EXAR NEW DESIGN 3903
AUTO CHRISTY 8889R
AUTO CHRISTY 853N

S A V PIONEER 7301
HSF WALL OF FAME
DHVO DEUCE 132R
EXLR LA VEDA 1002P
BON VIEW NEW DESIGN 1407
RR MISS EMULOUS 639I
AUTO NO MONEY DOWN 147J
AUTO AERIEL A 253G

P.E. 12.04.2019 to 5.01.2020 to ELCX Caesar 331C (56% P/HB)

Folks, this is a whale of a cow if we've ever seen one! To say this female is designed almost perfect would be a total understatement. ELCX En Time 726E is a TMCK Architect 031A daughter out of the phenomenal EXAR New Design female, AUTO Christy. She is drop dead powerful from every angle, expressively muscled and bold in her center body. She just has the look. She is homozygous polled and heterozygous black. Her yearling weight ranks in the top 2% of the entire breed and her weaning weight in the top 3%.

Lim-Flex (75) Cow HP / HB ELCX 840F LFF 2170437 10.20.18

ELCX Fun Size 840F ET

36

	CED	BW	WW	YW	MA	CEM	SC	ST	DOC	CW	RE	YG	MS	SMTI
EPD	13	-0.2	67	112	20	8	0.6	15	10	31	0.73	-0.36	-0.04	51.97
%Rank	25	25	40	20	70	20	85	15	80	40	65	40	70	65

HUNTS HI-LITER 245G
JCL LODESTAR 27L
 LOGAN'S CHEERLEADER 280G
 EXAR NEW DESIGN 3903
AUTO CHRISTY 8889R
 AUTO CHRISTY 853N

WADDLES COBALT 3106
 TNUH MISS C245
 COLE FIRST DOWN 46D
 TTCC CONFIDENCE MAKER
 BON VIEW NEW DESIGN 1407
 RR MISS EMULOUS 6391
 AUTO NO MONEY DOWN 147J
 AUTO AERIELA 253G

P.E. 1.03.2020 to 4.04.2020 to ELCX Fully Royal 451F (75% DP/HB)

Doesn't everyone love a 'fun size'? Well, ELCX Fun Size 840F is all that and so much more. She is a 75% Lim-Flex female out of JCL Lodestar. Her dam, AUTO Christy 8889R is a daughter of EXAR New Design 3903. She is homozygous black and homozygous polled.



Dam of lots 35 - 37, AUTO Christy 8889R

Lim-Flex (75) Cow HP / Black ELCX 845F LFF 2170438 10.22.18

ELCX Future Star 845F ET

37

	CED	BW	WW	YW	MA	CEM	SC	ST	DOC	CW	RE	YG	MS	SMTI
EPD	14	0.9	68	107	20	8	0.6	13	18	24	0.86	-0.41	-0.05	52.20
%Rank	15	50	35	30	70	20	85	30	3	65	40	30	70	65

HUNTS HI-LITER 245G
JCL LODESTAR 27L
 LOGAN'S CHEERLEADER 280G
 EXAR NEW DESIGN 3903
AUTO CHRISTY 8889R
 AUTO CHRISTY 853N

WADDLES COBALT 3106
 TNUH MISS C245
 COLE FIRST DOWN 46D
 TTCC CONFIDENCE MAKER
 BON VIEW NEW DESIGN 1407
 RR MISS EMULOUS 6391
 AUTO NO MONEY DOWN 147J
 AUTO AERIELA 253G

P.E. 1.03.2020 to 4.04.2020 to ELCX Fully Royal 451F (75% DP/HB)

ELCX Future Star 845F ET is a 75%-Flex female out of the legendary JCL Lodestar. Her dam is the EXAR New Design daughter, AUTO Christy 8889R. She is homozygous black and heterozygous polled. ELCX Future Star 845F is a full sibling to ELCX Fun Size 840F, so don't miss this phenomenal opportunity!



Sire of lots 36 & 37, JCL Lodestar 27L

*ELCX Bullet
Proof daughters*



Lim-Flex (55) Cow DP / DB ELCX 347F LFF 2267422 11.25.18

ELCX Fullproof 347F

38

	CED	BW	WW	YW	MA	CEM	SC	ST	DOC	CW	RE	YG	MS	\$MTI
EPD	10	2.9	72	108	20	5	1.16	8	11	28	0.8	-0.32	0	54.35
%Rank	70	95	20	30	70	75	35	85	70	50	50	55	60	50

EBFL YPSILANTI 420Y
ELCX BULLET PROOF 438B ET
AUTO POEM 273Y

PBRS ADD IT UP 3120A
ELCX FOCUS 347C
ELCX ANABELLE 347A

TC ABERDEEN 759
MAGS RAMADA
S A V BISMARCK 5682
MAGS PHANTOMS PRIZE
PBRS MILESTONE 137Y
PBRS Y NOT ME 165Y
MAGS XYLOID
MAGS SATCHEL

P.E. 1.03.2020 to 8.20.2020 to HWCB Eye of the Storm 406E (71% P/HB)
ELCX Fullproof 347F will wow you as soon as you get your eyes on her! She is a 55% Lim-Flex daughter of ELCX Bullet Proof, the EBFL Ypsilanti son. We love the size of foot and bone this female has under her. She's as deep as the Pacific Ocean and tracks with so much confidence on the move. If you're in the market for a female that will get the job done time after time- here she is. She is double polled and double black.

28



Lim-Flex (37) Cow DP / DB ELCX 17F LFF 2278471 11.20.18

ELCX Fallen 17F

39

	CED	BW	WW	YW	MA	CEM	SC	ST	DOC	CW	RE	YG	MS	\$MTI
EPD	13	1.3	76	114	20	8	1.27	8	12	34	0.69	-0.17	0.32	66.02
%Rank	25	65	10	20	70	20	25	85	55	30	70	90	10	5

EBFL YPSILANTI 420Y
ELCX BULLET PROOF 438B ET
AUTO POEM 273Y

G A R PROPHET
ELCX CALLIE 17 C
SPRING CREEKS LUVLY 3017A

TC ABERDEEN 759
MAGS RAMADA
S A V BISMARCK 5682
MAGS PHANTOMS PRIZE
C R A BEXTOR 872 5205 608
G A R OBJECTIVE 1885
EXAR TITLELIST T011
EXLR LUVLY 187T

P.E. 1.03.2020 to 4.05.2020 to ELCX Benchwarmer 363B (25% HP/HB)
ELCX Fallen 17F is another beautiful ELCX Bullet Proof daughter. She is double black and double polled. Her marbling and weaning weight EPDs rank in the top 10% of the breed. She also ranks in the top 20% of the breed for her yearling weight EPD. This female's dam, ELCX Callie 17C is a GAR Prophet daughter.

Sire of lots 38 - 41, ELCX Bullet Proof

Lim-Flex (43) Cow DP / HB ELCX 06F LFF 2277857 12.03.18

ELCX Foolproof 06F

40

	CED	BW	WW	YW	MA	CEM	SC	ST	DOC	CW	RE	YG	MS	\$MTI
EPD	12	0.7	68	100	20	7	1.4	6	9	27	0.68	-0.25	0.14	57.73
%Rank	35	45	35	45	70	35	15	>95	90	50	75	75	35	30

EBFL YPSILANTI 420Y
ELCX BULLET PROOF 438B ET
 AUTO POEM 273Y

TC ABERDEEN 759
 MAGS RAMADA
 S A V BISMARCK 5682
 MAGS PHANTOMS PRIZE
 RITO 112 OF 2536 RITO 616
 MAGS UKALANI
 LESF ASPHALT 9N
 EXAR SCOTCH CAP 1548

MAGS XUKALANI
JEPS SCOTCHCAP 06Z
 EXLR SCOTCH CAP 762T

A.I. 12.09.2019 to MAGS Firestone 218F (56% HP/B); P.E. 1.03.2020 to 4.05.2020 to ELCX Benchwarmer 363B (25% HP/HB)

This 43% Lim-Flex daughter of ELCX Bullet Proof is one to have on your short list when sale day rolls around. ELCX Bullet Proof is a son of EBFL Ypsilanti and this female's dam is a MAGS Xukalni daughter. ELCX Foolproof 06F is homozygous polled and double polled.



Lim-Flex (53) Cow Polled / HB ELCX 308F LFF 2159690 11.28.18

ELCX FutuREST 308F

42

	CED	BW	WW	YW	MA	CEM	SC	ST	DOC	CW	RE	YG	MS	\$MTI
EPD	13	-0.3	61	97	20	7	0.53	8	13	35	0.44	-0.15	0.24	58.48
%Rank	25	25	65	55	70	35	90	85	45	25	>95	90	15	30

RLBH AIR FORCE ONE
ELCX CAESAR 331 C
 PBRs ALICE 331A

EF XCESSIVE FORCE
 EF YAFFA 821Y
 MAGS YIP
 BUFORD LUCY 9302
 BT CROSSOVER 758N
 MAGS STRAWBERRY
 EXAR NEW DESIGN 3903
 AUTO CHRISTY 853N

MAGS WINSTON
ELCX AERIELA 308A
 AUTO CHRISTY 8889R

P.E. 1.03.2020 to 4.04.2020 to ELCX Fully Royal 451F (75% DP/HB)

ELCX FutuREST 308F is a daughter of a super exciting RLBH Air Force One son, ELCX Caesar. Her dam is ELCX Aeriela 308A, a MAGS Winston female. This female's marbling and birthweight EPDs both rank in the top 20% of the breed. She is homozygous black and heterozygous polled and 53% Lim-Flex.

Lim-Flex (25) Cow HP / HB ELCX 301F LFF 2161160 12.26.18

ELCX Fool Proof 301F

41

	CED	BW	WW	YW	MA	CEM	SC	ST	DOC	CW	RE	YG	MS	\$MTI
EPD	13	0.6	76	115	22	7	-	10	11	38	0.65	-0.12	0.42	69.14
%Rank	25	45	10	15	45	35	-	65	70	20	80	95	3	3

EBFL YPSILANTI 420Y
ELCX BULLET PROOF 438B ET
 AUTO POEM 273Y

TC ABERDEEN 759
 MAGS RAMADA
 S A V BISMARCK 5682
 MAGS PHANTOMS PRIZE
 SYDGEN C C & 7
 RITA 8H17 OF RITA 3110 TOTAL
 SS OBJECTIVE T510 0T26
 WRICOLE 54 EXT LASSIE 384

CHIMNEY TOP C C & 7 A19
ELC CAROLINA C301
 PCF OBJECTIVE LASSIE 301

A.I. 12.09.2019 to AUTO King David 120E (62% P/HB); P.E. 1.03.2020 to 4.05.2020 to ELCX Benchwarmer 363B (25% HP/HB)

ELCX Fool Proof 301F is a tremendous ELCX Bullet Proof female that will blow your mind with her number profile. Her marbling EPD ranks in the top 4% of the breed, her milk EPD ranks in the top 10% and her weaning weight EPD is in the top 15%. She is a 25% Lim-Flex female that is homozygous black and homozygous polled.



Sire of lots 42 - 44, ELCX Caesar 331 C



Sire, ELCX Caesar 331C

P.E. 1.03.2020 to 4.04.2020 to ELCX Fully Royal 451F (75% DP/HB)

Here is another tremendous daughter of ELCX Caesar, ELCX Forgetmeknot 104F. Her dam is the great SBLX 104U from MYTTY In Focus and MAGS Manuela. She is a 53% Lim-Flex and is double black and double polled. Her birthweight ranks in the top 10% and her marbling and milk EPDs rank in the top 20%.

Lim-Flex (53) Cow DP / DB ELCX 104F LFF 2277858 12.06.18

ELCX Forgetmenot 104F 43

	CED	BW	WW	YW	MA	CEM	SC	ST	DOC	CW	RE	YG	MS	SMTI
EPD	13	-0.3	57	87	20	8	1.18	11	13	31	0.35	-0.12	0.25	57.33
%Rank	25	25	80	80	70	20	35	50	45	40	>95	95	15	35

RLBH AIR FORCE ONE	EF XCESSIVE FORCE
ELCX CAESAR 331 C	EF YAFFA 821Y
PBRS ALICE 331A	MAGS YIP
	BUFORD LUCY 930Z
MYTTY IN FOCUS	S A F FOCUS OF E R
SBLX UNKNOWN 104U	MYTTY COUNTESS 906
MAGS MANUELA	EXLR LIMITED EDITION 765J
	AUTO CITY NIGHTS 214H



Sire, AGRI Chairman 1C ET

P.E. 1.03.2020 to 4.05.2020 to ELCX Benchwarmer 363B (25% HP/HB)

ELCX Fallen 17F is a double black, double polled daughter of ELCX Bullet Proof 438B. Her marbling and yearling weight both rank in the top 10% of the breed. She also ranks in the top 20% of the breed for her yearling weight EPD.

Lim-Flex (75) Cow HP / HB ELCX 33F LFF 2267408 11.14.18

ELCX Frosted 33F 44

	CED	BW	WW	YW	MA	CEM	SC	ST	DOC	CW	RE	YG	MS	SMTI
SIRE	10	0.7	69	104	18	6	1.11	8	15	24	0.84	-0.44	-0.08	51.51
DAM	70	45	30	35	85	55	35	85	20	65	45	25	80	65

EF XCESSIVE FORCE	D A TRAVELER 004 703
AGRI CHAIRMAN 1C ET	CFLX MOLLYS IMAGE
TGBC SWIZZLE 270W	JCL LODESTAR 27L
	MAGS SWIZZLE
TW FIRE N' ICE	BOHI TITLELIST 7050T
ELCX SANTA BABY 133B	MAGS UPPER SAUNTER
LH YESTERDAY'S DREAM 133Y	LH RODEMASTER 338R
	KRVN TICKLES 048T

ELCX Benchwarmer daughters



Sire, Benchwarmer 363B

P.E. 1.03.2020 to 4.04.2020 to ELCX Fully Royal 451F (75% DP/HB)

ELCX Fearless 25F is a daughter of ELCX Benchwarmer, an MYTTY In Focus son. She ranks in the top 25% of the breed for both her milk and birthweight EPDs. She is a double polled, 56% Lim-Flex female.

Lim-Flex (56) Cow DP / Black ELCX 25F LFF 2267409 11.04.18

ELCX Fearless 25F 45

	CED	BW	WW	YW	MA	CEM	SC	ST	DOC	CW	RE	YG	MS	SMTI
EPD	13	-0.2	52	80	22	8	-	13	13	13	0.47	-0.27	0.04	49.44
%Rank	25	25	95	90	45	20	-	30	45	95	95	65	55	80

MYTTY IN FOCUS	S A F FOCUS OF E R
ELCX BENCHWARMER 363B	MYTTY COUNTESS 906
SSTO SADIE 6854S	JCL LODESTAR 27L
	THOMAS LUCY ROSE 9509
MAIN STAY 30X	EF MAIN STAY 541M
RAGF 25 XEMPO	JEPS SOMETHING SPECIAL 3U
ALE XEMPO 500X	WULFS NOBEL PRIZE 3861N
	CND TEMPO



Lim-Flex (50) Cow HP / DB ELCX 43F LFF 2278473 04.24.18

ELCX Forty 43F

46

	CED	BW	WW	YW	MA	CEM	SC	ST	DOC	CW	RE	YG	MS	SMTI
EPD	12	0.3	61	101	18	8	1.45	14	12	28	0.43	-0.15	0.09	53.03
%Rank	35	35	65	45	85	20	15	20	55	50	>95	90	45	60

MYTTY IN FOCUS
ELCX BENCHWARMER 363B
 SSTS SADIE 6854S

AHCC WESTWIND W544
ELCX CARROUSEL 043Z
 MINE PLD NET WORTH 8043U

S A F FOCUS OF E R
 MYTTY COUNTESS 906
 JCL LODESTAR 27L
 THOMAS LUCY ROSE 9509
 KAJO RESPONDER 120R
 AHCC MISS WULF HUNT R544
 S A V NET WORTH 4200
 MINE PLD BUTTERCREME

P.E. 12.20.2019 to 3.23.2020 to ELCX Caesar 331C (56% P/HB)

ELCX Forty 43F is an ELCX Benchwarmer 363B daughter. He is the calving-ease machine son of MYTTY In Focus. This female's dam, ELCX Carrousel 043Z is an AHCC Westwind daughter. She is such a complete, powerful and smooth lined female. We love the amount of rib and depth of body this female has and she is crazy elegant fronted. Get this gal on the move and you'll admire her even more. She's comfortable on her feet and legs and her structure will keep her functional for years down the road. ELCX Forty 43F is homozygous polled and double black.

Lim-Flex (46) Cow DP / HB ELCX 235F NPF 2277859 12.11.18

ELCX Foolish 235F

47

EPD	CED	BW	WW	YW	MA	CEM	SC	ST	DOC	CW	RE	YG	MS	\$MTI
11	1.4	72	106	23	7	1.35	8	10	26	0.76	-0.28	0.13	58.61	
%Rank	55	65	20	35	35	35	20	85	80	55	60	65	35	30

EBFL YPSILANTI 420Y
ELCX BULLET PROOF 438B ET
 AUTO POEM 273Y

AUTO WILL POWER 160X
ELCX CATCH ME 235C
 AUTO BARBIE 235Z

TC ABERDEEN 759
 MAGS RAMADA
 S A V BISMARCK 5682
 MAGS PHANTOMS PRIZE
 G A R PREDESTINED
 AUTO REBECA 292S
 MAGS WAZOWSKI
 EXLR BARB 170R

P.E. 1.03.2020 to 4.04.2020 to ELCX Fully Royal 451F (75% DP/HB)

You definitely will not be 'foolish' when you load this gal on your trailer when sale day concludes. ELCX Foolish 235F is a daughter of the EBFL Ypsilanti bull, ELCX Benchwarmer. She ranks in the top 25% of the breed for her weaning weight EPD. She is homozygous black and double polled and 46% Lim-Flex.

Lim-Flex (37) Cow HP / HB ELCX 295F LFF 2267413 10.10.18

ELCX Flower 295F

48

EPD	CED	BW	WW	YW	MA	CEM	SC	ST	DOC	CW	RE	YG	MS	\$MTI
13	-1.2	54	83	21	10	1.4	12	9	17	0.35	-0.14	0.3	58.53	
%Rank	25	10	90	90	60	3	15	40	90	85	>95	95	10	30

MYTTY IN FOCUS
ELCX BENCHWARMER 363B
 SSTO SADIE 6854S

MAGS WILD BUNCH
ELCX AURORA 295Z
 EXLR BARB 170R

S A F FOCUS OF ER
 MYTTY COUNTESS 906
 JCL LODESTAR 27L
 THOMAS LUCY ROSE 9509
 HUNT CORNHUSKER 225N
 MAGS RAPHAELA
 BON VIEW NEW DESIGN 1407
 EXLR BARB 1027M

P.E. 1.03.2020 to 4.05.2020 to ELCX Benchwarmer 363B (25% HP/HB)

This Benchwarmer daughter is all about the numbers! ELCX Flower 295F ranks in the top 10% of the breed for her marbling EPD and in the top 15% for her birthweight EPD. She is homozygous black and homozygous polled.



Lim-Flex (62) Cow Polled / Black ELCX 071F LFF 2277854 11.26.18

ELCX Florentine 071F

49

EPD	CED	BW	WW	YW	MA	CEM	SC	ST	DOC	CW	RE	YG	MS	\$MTI
11	0	66	102	19	7	0.89	8	13	36	0.69	-0.24	0.21	59.56	
%Rank	55	30	40	40	80	35	70	85	45	25	70	75	20	25

EF XCESSIVE FORCE
AGRI CHAIRMAN 1C ET
 TGBC SWIZZLE 270W

MAGS WINSTON
ELCX ZING 071Z
 PBRS XCEPTIONAL 071X

D A TRAVELER 004 703
 CFLX MOLLYS IMAGE
 JCL LODESTAR 27L
 MAGS SWIZZLE
 BT CROSSOVER 758N
 MAGS STRAWBERRY
 G A R PREDESTINED
 WLR RENDEZVOUS 050R

P.E. 1.03.2020 to 4.04.2020 to ELCX Fully Royal 451F (75% DP/HB)

ELCX Florentine 071F is a daughter of AGRI Chairman 1C, an EF Xcessive Force son. Her dam is ELCX Zing 071Z, a daughter of MAGS Winston. Talk about time trusted and proven genetics! She is a 62% Lim-Flex female that ranks in top 20% of the breed for her marbling EPD.

Lim-Flex (62) Cow Polled / Black ELCX 022F LFF 2277860 11.04.18

ELCX Fully Ablaze 022F

50

EPD	CED	BW	WW	YW	MA	CEM	SC	ST	DOC	CW	RE	YG	MS	\$MTI
10	0.3	66	100	14	5	1.01	12	13	29	0.69	-0.26	0.01	52.59	
%Rank	70	35	40	45	>95	75	45	40	45	29	70	60	60	60

EF XCESSIVE FORCE
AGRI CHAIRMAN 1C ET
 TGBC SWIZZLE 270W

RITO 6EM3 OF 4L1 EMBLAZON
SPRING CRKS KANDY KISS
 EXLR KANDY KISS N839

D A TRAVELER 004 703
 CFLX MOLLYS IMAGE
 JCL LODESTAR 27L
 MAGS SWIZZLE
 O C C EMBLAZON 854E
 RITA 4L1 OF 2536 208
 WULFS KIOWA 3361K
 LOGAN'S KANDY KISS 1116K

P.E. 1.03.2020 to 4.05.2020 to ELCX Benchwarmer 363B (25% HP/HB)

Another AGRI Chairman daughter that we think so highly of! ELCX Fully Ablaze 022F is a 62% Lim-Flex female that you'll want to be sure to check out. Her birthweight EPD ranks in the top 25% of the breed. Her future calves will be full of design, length of spine and depth of body. We love this female's look and her efficient build.

PB Limousin (87) Cow Polled / Black ELCX 34F NPF 2159698 06.02.18

ELCX Fortress 34F

51

EPD	CED	BW	WW	YW	MA	CEM	SC	ST	DOC	CW	RE	YG	MS	\$MTI
9	2	68	102	17	6	1.06	7	14	30	0.78	-0.38	-0.11	49.54	
%Rank	70	65	20	15	>95	50	10	90	45	10	>95	>95	2	4

EF XCESSIVE FORCE
AGRI CHAIRMAN 1C ET
 TGBC SWIZZLE 270W

BOHI TOP DOLLAR 7144T
ELCX DELUXE 34D
 ELCX SPLENDIA 416 Z

D A TRAVELER 004 703
 CFLX MOLLYS IMAGE
 JCL LODESTAR 27L
 MAGS SWIZZLE
 AUTO DOLLAR GENERAL 122R
 CARROUSELS PINA COLADA
 MAGS XYLOID
 MAGS ROSE MARIE

P.E. 12.04.2019 to 3.23.2020 to ELCX Caesar 331C (56% P/HB)

ELCX Fortress 34F is a great daughter of AGRI Chairman, the EF Xcessive Force son. She ranks in the top 1% of the entire breed for her marbling EPD. IF you're looking to produce individuals that can have excellent numbers and a terrific design, this is your female! ELCX Fortress 34F is one that we've always admired for her softness of lines and terrific structure.



Lim-Flex (56) Cow HP / HB ELCX 821F LFF 2173204 05.02.18

ELCX Flower 821F ET 52

	CED	BW	WW	YW	MA	CEM	SC	ST	DOC	CW	RE	YG	MS	SMTI
EPD	14	-0.3	37	64	20	8	0.3	9	10	16	0.15	-0.12	0.16	48.09
%Rank	15	25	>95	>95	70	20	>95	80	80	90	>95	95	30	85

MAGS YIP
MAGS ARGO
 MAGS UNSMUDGE

MAGS WINSTON
ELCX ROSELLE 141Y
 DFLC HBPC 25L

MAGS THE GENERAL
 AUTO CARMINDA 656S
 DCC RITO 619 OF 6002 3J24
 MAGS SMIDGEN
 BT CROSSOVER 758N
 MAGS STRAWBERRY
 DFLC DOUBLE SHOT BPB 41E
 DALTONS EDITH ERICA 250

Lim-Flex (62) Cow DP / DB ELCX 90E LFF 2278476 03.20.17

ELCX Extra 90E 53

	CED	BW	WW	YW	MA	CEM	SC	ST	DOC	CW	RE	YG	MS	SMTI
SIRE	6	3.3	53	81	22	2	0.65	10	13	23	0.69	-0.35	-0.06	46.74
DAM	>95	>95	90	90	45	>95	85	65	45	65	70	45	75	90

DHVO DEUCE 132R
MAGS XYLOID
 BOHI RHONDA 314R

LAGRAND MAF ANTIDOTE 5775
YRTX WHIRLWIND 906W
 JELU CO CO

GPFF BLAQUE RULON
 AMY JO DHAN 20L
 EXLR NEW GENERATION 071M
 DAVIS ROSETTA 9514
 G 13 STRUCTURE
 MAPLE LANE FOREVER LADY 2
 LA COMMANDER
 DCLE COCO BELLE

Lim-Flex (50) Cow DP / DB ELCX 519E LFF 2278474 05.01.17

ELCX Eileen 519E 54

	CED	BW	WW	YW	MA	CEM	SC	ST	DOC	CW	RE	YG	MS	SMTI
EPD	11	1.2	54	84	19	6	0.97	11	15	24	0.53	-0.18	0.25	56.96
%Rank	55	60	90	85	80	55	55	50	20	65	95	90	15	35

DHVO DEUCE 132R
MAGS XYLOID
 BOHI RHONDA 314R

G A R PREDESTINED
RVDR WYNONA 519W
 BOHI RISQUE 255R

GPFF BLAQUE RULON
 AMY JO DHAN 20L
 EXLR NEW GENERATION 071M
 DAVIS ROSETTA 9514
 B/R NEW DESIGN 036
 G A R EXT 4206
 BR MIDLAND
 ANLC MANDY RAY 2141M

A.I. 12.22.2019 to ELCX Kings Landing 599D (81% HP/HB);
 P.E. 1.03.2020 to 8.20.2020 to HWCB Eye of the Storm 406E
 (71% P/HB)

This is another superb female that we just can't get enough of!
 ELCX Flower 821F is a MAGS Argo daughter. Argo is the
 MAGS Yip son that we've really enjoyed using. This female's
 dam, ELCX Roselle 41Y is a producer if we've ever seen one and
 a daughter of MAGS Winston. Not only does she have elite ge-
 netics backing her, she's got the number profile too! Her birth-
 weight ranks in the top 15% of the breed and her marbling EPD
 ranks in the top 25%. We love this female's look, her overall body
 shape and dimension. She is sure to produce offspring that will
 be flashy, packed full of power and uniformity. She is homozy-
 gous black and homozygous polled and 56% Lim-Flex.



lot 52

P.E. 12.04.2019 to 3.23.2020 to ELCX Caesar 331C (56% P/HB)
 ELCX Extra 90E is a MAGS Xyloid daughter that deserves your at-
 tention. She is double black and double polled. We love MAGS
 Xyloid daughters for their maternal instinct and ability to produce
 high end offspring with power and efficiency. Don't look past
 this beautiful female on sale day!



33

Sire, MAGS Xyloid

P.E. 12.04.2019 to 3.23.2020 to ELCX Caesar 331C (56% P/HB)
 ELCX Eileen 519E is a daughter of MAGS Xyloid and out of a GAR
 Predestined female, RVDR Wynon 519W. Her marbling EPD
 ranks in the top 15% of the breed. She is a double black, double
 polled 50% Lim-Flex female. We've always been partial to these
 MAGS Xyloid daughters and know you will be too when you get
 them into production.

PB Limousin (87) Cow HP / HB ELCX 654F NPF 2152772 09.24.18

ELCX Francine 654F

55

	CED	BW	WW	YW	MA	CEM	SC	ST	DOC	CW	RE	YG	MS	\$MTI
EPD	11	0.5	59	92	19	6	0.73	10	14	21	0.83	-0.51	-0.29	41.45
%Rank	45	35	55	40	95	50	35	75	45	30	>95	>95	25	45

ALTER EGO
VL DAYTONA 603D
RMKR X'S AND O'S 086X

ENGD ZIP LINE 2515Z
ELCX DAPHNE 654D ET
DFLC HBHPC 1S

EF XCESSIVE FORCE
CJSL TEQUILA SUNRISE 7003
RMKR UNFORGETTABLE 847U
RMKR MISS STARBURST 500R
AHCC WESTWIND W544
RTTB ROYALTY 2505R
JCL LODESTAR 27L
DFLC HBPC 25L

P.E. 1.03.2020 to 4.05.2020
to ELCX Benchwarmer
363B (25% HP/HB)

ELCX Francine 654F is a homozygous black and homozygous polled female to keep your eyes on. She is out of VL Daytona 603D, an Alter Ego son. Her dam, ELCX Daphne is an ENGD Zip Line 2515Z daughter. Talk about elite genetics all throughout this gal's pedigree!

Lim-Flex (65) Cow DP / HB ELCX 152F LFF 2277855 11.22.18

ELCX Fun One 152F

57

	CED	BW	WW	YW	MA	CEM	SC	ST	DOC	CW	RE	YG	MS	\$MTI
EPD	10	2	64	104	22	5	0.86	10	12	37	0.81	-0.36	0.01	52.82
%Rank	70	80	50	35	45	75	70	65	55	20	50	40	60	60

MAGS ZODIAC
ELCX DUPLIN 602D ET
MAGS UNLIKELY CANDIDATE

ENGD ZIP LINE 2515Z
ELCX DELIGN 152D
MCBN YOU GOTTA SEE ME 15Z

MAGS WINSTON
MAGS XANTHOS
G A R PREDESTINED
LOGAN'S CHEERLEADER 280G
AHCC WESTWIND W544
RTTB ROYALTY 2505R
LH RODEMASTER 338R
SBLX UTOPIAN QUEEN 1305U

P.E. 1.03.2020 to 4.05.2020
to ELCX Benchwarmer
363B (25% HP/HB)

ELCX Fun One 152F is out of ELCX Duplin 602D, a MAGS Zodiac son. Her dam, ELCX Delign 152D is an ENGD Zip Line 2515Z daughter. She has some impressive numbers- her milk EPD ranks in the top 25% of the breed and her yearling weight ranks in the top 30%. She is 65% Lim-Flex and homozygous black and double polled.

Lim-Flex (54) Cow DP / DB ELCX 41F LFF 2149389 05.15.18

ELCX Funny Girl 41F

56

	CED	BW	WW	YW	MA	CEM	SC	ST	DOC	CW	RE	YG	MS	\$MTI
EPD	10	1.2	56	86	16	6	-	10	12	27	0.5	-0.16	0.14	53.39
%Rank	70	60	85	80	95	55	-	65	55	50	95	90	35	55

EF XCESSIVE FORCE
ELCX DELTA FORCE 603D ET
MAGS UNLIKELY CANDIDATE

MAGS XYLOID
ELCX DOTTED 41D
APLI RUMOR 41Y

D A TRAVELER 004 703
CFLX MOLLYS IMAGE
G A R PREDESTINED
LOGAN'S CHEERLEADER 280G
DHVO DEUCE 132R
BOHI RHONDA 314R
S A V PIONEER 7301
CLLL BLACK POWER 613W

P.E. 1.03.2020 to 4.05.2020
to ELCX Benchwarmer
363B (25% HP/HB)

You'll definitely want to study this gal's awesome pedigree. ELCX Funny Girl 41F is a daughter of ELCX Delta Force 603D ET, and EF Xcessive Force son. Her dam, ELCX Dotted 41D is a MAGS Xyloid daughter. She is double black and double polled.

% Limousin (81) Cow DP / DB WVRL 323F NXF 2143055 04.10.18

WVR Finlee 323F

58

	CED	BW	WW	YW	MA	CEM	SC	ST	DOC	CW	RE	YG	MS	\$MTI
EPD	11	1.3	66	100	22	6	0.72	11	11	26	0.89	-0.46	-0.05	51.91
%Rank	50	60	35	35	60	55	55	60	65	35	65	65	35	30

MAGS YIP
RRDC BIG BOY 4005B
HC PASSION 811

LVLS BANK ACCOUNT 8116B
LVLS 637D
RRDC AMARILLO 136 A

MAGS THE GENERAL
AUTO CARMINDA 656S
S A V LEGACY 5216
HC PASSION 666
MAGS WAZOWSKI
LVLS WILMA 8116W
RRDC UNREAL 17X
RRDC 183 X

P.E. 1.03.2020 to 8.20.2020
to HWCB Eye of the Storm
406E (71% P/HB)

WVR Finlee 323F is a daughter of RRDC Big Boy 4005B, a MAGS Yip son. Her dam is an LVLS Bank Account 8116B daughter. She is double black and double polled and her weaning weight ranks in the top 25% of the breed.

Lim-Flex (56) Cow DP / DB ELCX 362F LFF 2278481 05.17.17

ELCX Everclear 362E

59

	CED	BW	WW	YW	MA	CEM	SC	ST	DOC	CW	RE	YG	MS	\$MTI
EPD	12	0.7	57	85	20	6	1.16	10	13	24	0.7	-0.3	0.02	50.28
%Rank	35	45	80	85	70	55	35	65	45	65	70	60	55	75

S A V BRILLIANCE 8077
ELCX BACARDI 427B ET
WLR TAINTED LOVE 746X

MAGS XYLOID
ELCX BARELY LEGAL 362B
MAGS TAPESTRY

S A V BISMARCK 5682
S A V BLACKCAP MAY 5270
WULFS URBAN COWBOY 2149U
MAGS PHANTOMS PRIZE
DHVO DEUCE 132R
BOHI RHONDA 314R
MYTTY IN FOCUS
MAGS GRETCHEN 143L

P.E. 12.04.2019 to 3.23.2020
to ELCX Caesar 331C (56% P/HB)

This female's dam, ELCX Barely Legal 362B is a MAGS Xyloid daughter. When we think of functional and productive females, this is a female we always reference. She's long in her spine, bold through her center body and designed with such a productive look. We believe in this female's ability to continue on in your program creating high quality offspring that will be at the top of their contemporaries.



Angus Cow Polled / Black E916 AAA 19415890 01.06.17

ELC Elegant Lady E916

60

	CED	BW	WW	YW	MA	CEM	SC	ST	DOC	CW	RE	YG	MS	\$MTI
EPD	13	-0.6	52	71	17	6	0.45	13	11	16	0.61	-0.43	-0.12	44.64
%Rank	20	20	85	95	85	55	95	30	55	80	80	30	80	90

CONNEALY CONFIDENCE 0100
QUAKER HILL ASSURANCE 3N34
 QHF BLACKCAP 6E2 OF4V16 4355
 SOO LINE MOTIVE 9016
WSA LADY 916Z
 GAMBLES LADY 2021
 CONNEALY TOBIN
 BECKA GALA OF CONANGA 8281
 IDEAL 4355 OF 0T26 2440
 QHF BLACKCAP 4V16 OF 1H8
 HF KODIAK 5R
 TLA BEAUTY 5R
 S A V IRON MOUNTAIN 8066
 GAMBLES LADY 3016

P.E. 12.28.2019 to 8.20.2020 to ELC Twisted EX C561 (Purebred Angus)

Folks - this is an Angus female that is the cookie cutter of Angus females. Simply put, she's the outline of a near-perfect Angus female. She's dead level in her hip design, long and level in her spine and so impressive through her center body. Her explosive rib shape and depth of body are a force to be reckoned with. She's beautiful fronted and so great in her structure. ELC Elegant Lady E916 is just as her name states- elegant. We are confident in her ability to produce the great ones time and time again! She is a daughter of Quaker Hill Assurance 3N34 and WSA Lady 916Z. Her birthweight ranks in the top 15% of the breed

Angus Cow Polled / Black F27 AAA 19414878 09.02.18

ELC First Corene F27

61

EPD	CED	BW	WW	YW	MA	CEM	SC	ST	DOC	CW	RE	YG	MS	\$MTI
7	2.1	71	121	22	11	1.01	-	7	46	0.83	0.62	-0.031	-	-
%Rank	45	70	10	15	70	20	35	-	85	40	15	45	10	-

A A R TEN X 7008 S A

DEER VALLEY ALL IN

DEER VALLEY RITA 0274

FFF CORENE F27

BLUQ CORENE 1389

MYTTY IN FOCUS

A A R LADY KELTON 5551

SITZ UPWARD 307R

G A R OBJECTIVE 2345

MCC DAYBREAK

QHF BLACKCAP 6E2 OF4V16 4355

CONNELLY CONSENSUS 7229

LIMESTONE MNARCH CORENE T265

P.E. 2.14.2020 to 8.20.2020 to ELC Point Blank F033 (AAA 197936).

ELC First Corene F27 is a Deer Valley All In daughter out of FFF Corene F27. This female's weaning weight ranks in the top 10% of the breed and her yearling weight ranks in the top 15%. When we think of functional Angus females, this is one that always comes to mind. We love her design, functional build and body capacity. The options are truly endless with this attractive female!

Angus Cow Polled / Black G015 AAA -- 02.01.19

ELC Granite G015

63

EPD	CED	BW	WW	YW	MA	CEM	SC	ST	DOC	CW	RE	YG	MS	\$MTI
-	-	-	-	-	-	-	-	-	-	-	-	-	-	-
%Rank	-	-	-	-	-	-	-	-	-	-	-	-	-	-

BALDRIDGE WILLIE Y34

ELC TWISTED EX C561

RITA 9MA1 OF RITA 7067 PRED

GREENBRIER ENVIOUS 5

GREENBRIER ENVIOUS 557

GREENBRIERS BLACK BEAUTY

BALDRIDGE WAYLON W34

BALDRIDGE DUCHESS T69

G A R PREDESTINED

RITA 7P67 OF RITA 5M46 OBJ

RAVENSWOOD ENVIOUS 5

RAVENSWOOD PRIDE LASSIE 6

AMES PLANTATION BEAMERS LAD

GREENBRIERS PRIDE 6

P.E. 2.14.2020 to 8.20.2020 to ELC Point Blank F033 (AAA 197936).

F015 is an ELC Twisted Ex C561 daughter out of a beautiful female, Sprng Crks Forever Lady 0015. We just love what ELC Twisted Ex produces in his females. They're full of maternal power, look and explosive rib shape.

Angus Cow Polled / Black G34 AAA -- 03.19.19

ELC Grace G34

65

EPD	CED	BW	WW	YW	MA	CEM	SC	ST	DOC	CW	RE	YG	MS	\$MTI
-	-	-	-	-	-	-	-	-	-	-	-	-	-	-
%Rank	-	-	-	-	-	-	-	-	-	-	-	-	-	-

G A R PROPHET

WOODSIDE RITO 4P26 OF 0242

RITA 0242 OF RITA 7068

G A R RETAIL PRODUCT

ELC RETAIL B34

ELC ACCESS Z34

CRA BEXTOR 872 5205 608

G A R OBJECTIVE 1885

RITO REVENUE 5M2 OF 2536 PRE

RITA 7068 OF RITA 5FH8 OBJ

G A R PRECISION 1680

G A R EXT 4927

S A V HERITAGE 6295

KC RITA 34U

P.E. 2.14.2020 to 8.20.2020 to ELC Point Blank F033 (AAA 197936).

G34 is a daughter of Woodside Rito 4050 of 0M2, a GAR Prophet son. This female's dam is ELC Retail B34, a GAR Retail Product. Folks, the genetics are all here to produce some crazy good offspring. Don't pass this gal up on sale day because we're confident she'll be in your pastures for many years to come after you see what she can do for your program!

Angus Cow Polled / Black F819 AAA -- 10.20.19

ELC Futurist F819

62

EPD	CED	BW	WW	YW	MA	CEM	SC	ST	DOC	CW	RE	YG	MS	\$MTI
-	-	-	-	-	-	-	-	-	-	-	-	-	-	-
%Rank	-	-	-	-	-	-	-	-	-	-	-	-	-	-

G A R PROPHET

WOODSIDE RITO 4P26 OF 0242

RITA 0242 OF RITA 7068

BC ROCKET 44

ELC TIFFANY 8198Z

44 RUBY OF TIFFANY 8198

CRA BEXTOR 872 5205 608

G A R OBJECTIVE 1885

RITO REVENUE 5M2 OF 2536 PRE

RITA 7068 OF RITA 5FH8 OBJ

BC MATRIX 4132

GIBBET HILL MIGNONNE E37

B/R AMBUSH 28

B/R RUBY OF TIFFANY 6380

P.E. 2.14.2020 to 8.20.2020 to ELC Point Blank F033 (AAA 197936).

Here is a daughter of Woodside Rito of 4P26 of 0242, a direct son of the great GAR Prophet. This female's dam is ELC Tiffany 8198Z, a daughter of BC Rocket 44 who goes back to the phenomenal OCC Emblazon 854E. Folks, the powerful genetics run deep in this female's pedigree so don't look past her come sale day!

Angus Cow Polled / Black F709 AAA -- 11.23.18

ELC Free Tour F709

64

EPD	CED	BW	WW	YW	MA	CEM	SC	ST	DOC	CW	RE	YG	MS	\$MTI
-	-	-	-	-	-	-	-	-	-	-	-	-	-	-
%Rank	-	-	-	-	-	-	-	-	-	-	-	-	-	-

R B TOUR OF DUTY 177

URF TOUR OF DUTY 1515

YON HAZEL Z408

ROSEWOOD APACHE 1084

PCF APACHE ELINE 709

VF 2092 ELINE 0077 OF 6002

WERNER WAR PARTY 2417

B A LADY 6807 305

YON FUTURE FOCUS T219

YON HAZEL U21

LEACHMAN SAUGAHATCHEE

ROSEWOOD EIRCA 8052

WHITE OAK PRECISE 6002

VF 0077 ELINE 9620G OF EXT

P.E. 2.14.2020 to 8.20.2020 to ELC Point Blank F033 (AAA 197936).

F709 is a daughter of URF Tour of Duty 1515 and from a tremendous female, PCF Apache Eline 709. If you're in the market for a versatile Angus female that's full of look, cow power and proven genetics, here she is!

Angus Cow Polled / Black F827 AAA 19439865 09.02.18

ELC Primo Lady F827

66

EPD	CED	BW	WW	YW	MA	CEM	SC	ST	DOC	CW	RE	YG	MS	\$MTI
11	1.3	66	100	22	6	0.72	11	11	26	0.89	-0.46	-0.05	51.91	-
%Rank	50	60	35	35	60	55	55	60	65	35	65	65	35	30

DAMERON FIRST CLASS

COLBURN PRIMO 5153

SILVEIRAS SARAS DREAM 1339

RITO 5M17 OF 2V9 PREDESTINED

PCF PREDESTINED LADY 827

PCF BLUE BELLE ULTRAVOX 208

EXG RS FIRST RATE S903 R3

DAMERON NORTHERN MISS 3114

SILVEIRAS STYLE 9303

EXG SARAS DREAM S609 R3

G A R PREDESTINED

RITA 2V9 OF 2536 1407

B T ULTRAVOX 297E

G M LADY BLUE BELLE G126

A.I.'d to Woodside Rito 4P26 of 0242 on 12.21.19. P.E. 2.14.2020 to 8.20.2020 to URF Brute 1707, ELC Primo Lady F827 and Colburn Primo 5153

ELC Primo Lady F827 is a daughter of Colburn Primo 5153- so you know she'll be in high demand on sale day! Her dam is PCF Predestined Lady 827. We love what these Primo daughters can do for a Lim-Flex individual. They're flashy, well designed and powerful cattle. Not to mention, they're dual purpose in the show ring and in production.

Angus Cow Polled / Black F417 AAA -- 03.12.18

ELC Flower F417

67

EPD	CED	BW	WW	YW	MA	CEM	SC	ST	DOC	CW	RE	YG	MS	SMTI
%Rank	-	-	-	-	-	-	-	-	-	-	-	-	-	-

A A R TEN X 7008 S A
V A R DISCOVERY 2240
 DEER VALLEY RITA 0308

TIRO 6EM3 OF 4L1 EMBLAZON
SPRING CRKS ELITE 417Y
 EXG ELITE S417 R3

MYTTY IN FOCUS
 A A R LADY KELTON 5551
 SITZ UPWARD 307R
 G A R OBJECTIVE 2345
 O C C EMBLAZON 854E
 RITA 4L1 OF 2536 208
 BR MIDLAND
 RF RB ELITE 43893

A.I.'d to URF Brute 1707 on 01.04.2020. P.E.
 2.14.2020 to 8.20.2020 to URF Brute 1707

This Angus female is one to keep your eye on. She is out of the GAR Prophet son, Woodside Rito 4P26 of 0242 and a terrific female, ELC Tiffany 8198Z. We admire this female's functional design, moderate build and her super refined and feminine front end. She's built to produce the solid ones that will rise to the top of their contemporaries. She is great one her feet and legs, smooth in her lines and deep bodied.



67

Angus Cow Polled / Black F370 AAA -- 10.05.18

ELC Felecia F370

68

EPD	CED	BW	WW	YW	MA	CEM	SC	ST	DOC	CW	RE	YG	MS	SMTI
%Rank	-	-	-	-	-	-	-	-	-	-	-	-	-	-

R B TOUR OF DUTY 177
URF TOUR OF DUTY 1515
 YON HAZEL Z408

EXAR UPSHOT 0562B
ELC SHAMROCK B370
 SHAMROCKS JULIA 014P

WERNER WAR PARTY 2417
 B A LADY 6807 305
 YON FUTURE FOCUS T219
 YON HAZEL U21
 SITZ UPWARD 307R
 EXAR BARBARA T020
 BR MIDLAND
 SAR NEW DESIGN 036 8311

P.E. 2.14.2020 to 8.20.2020 to ELC Point Blank F033 (AAA 197936).

This URF Tour of Duty 1515 daughter is one that you can't go wrong with. Her dam, ELC Shamrock B370 is an EXAR Upshot 0562B daughter. When you study this female you'll appreciate her strength of top, her massive depth of body and her functional structure. She's a female that we're confident will produce offspring with longevity, design and efficiency.



68

Angus Cow Polled / Black F216 AAA -- 12.29.18

ELC Fine Jules F216

69

EPD	CED	BW	WW	YW	MA	CEM	SC	ST	DOC	CW	RE	YG	MS	SMTI
%Rank	-	-	-	-	-	-	-	-	-	-	-	-	-	-

R B TOUR OF DUTY 177
URF TOUR OF DUTY 1515
 YON HAZEL Z408

G A R PREDESTINED T598
PCF JULIE 216 PRED
 PCF JULIE 922 APACHE

WERNER WAR PARTY 2417
 B A LADY 6807 305
 YON FUTURE FOCUS T219
 YON HAZEL U21
 G A R PREDESTINED
 G A R FUTURE DIRECTION 1804
 WERNER RETAIL PRODUCT 1357
 PCF JULIE RITA 3639 711

P.E. 2.14.2020 to 8.20.2020 to ELC Point Blank F033 (AAA 197936).

Here is another URF Tour of Duty 1515 daughter that you'll want to see for yourself when sale day approaches. Tour of Duty is a bull that creates offspring with functional number profiles, superior design and loads of cow power.

Reference Sire

Limousin (95) Bull HP / HB CSM 32E CPM 4088530 01.13.17

Riverstone Exodus ET **A**

TMCK DURHAM WHEAT 6030X X HSF YOUR FANTASY

	CED	BW	WW	YW	MA	CEM	SC	ST	DOC	CW	RE	YG	MS	\$MTI
EPD	9	3.3	60	86	26	6	1.00	7	12	8	0.96	-0.59	-0.54	33.27
%Rank	60	85	40	40	35	40	15	75	45	75	85	90	80	75



Riverstone Exodus



ELCX Benchwarmer 363B

Lim-Flex (50) Bull Polled / Black ELCX 929G LFM 2173151 05.02.19

ELCX Gone Fishin 929G ET **B**

EF XCESSIVE FORCE X AUTO POEM 273Y

	CED	BW	WW	YW	MA	CEM	SC	ST	DOC	CW	RE	YG	MS	\$MTI
EPD	11	0.4	66	94	12	7	1.60	9	9	22	0.45	-0.14	-0.05	49.29
%Rank	55	40	40	65	>95	35	5	80	90	70	>95	95	70	80



ELCX Gone Fishin 929G



ELCX Caesar 331C

34

Lim-Flex (25) Bull HP / HB ELCX 363B LFM 2059017 01.03.14

ELCX Benchwarmer 363B **C**

MYTTY IN FOCUS X SSTO SADIE 6854S

	CED	BW	WW	YW	MA	CEM	SC	ST	DOC	CW	RE	YG	MS	\$MTI
EPD	14	-0.9	58	95	19	10	2.00	15	15	22	-0.03	0.10	0.34	59.12
%Rank	15	15	70	55	75	4	2	10	20	65	>95	>95	10	25

Lim-Flex (56) Bull Polled / HB ELCX 331C LFM 2082808 03.12.15

ELCX Caesar 331 C **D**

RLBH AIR FORCE ONE X PBRs ALICE 331A

	CED	BW	WW	YW	MA	CEM	SC	ST	DOC	CW	RE	YG	MS	\$MTI
EPD	11	-0.1	60	93	17	6	0.85	10	14	38	0.20	-0.02	0.29	58.97
%Rank	50	25	65	60	90	55	65	50	30	20	>95	>95	15	25



ELCX Kings Landing 599D

Limousin (81) Bull HP / HB ELCX 559D NXM 2102783 02.12.16

ELCX Kings Landing 599D **E**

MAGS XYLOID X WLR PRADA

	CED	BW	WW	YW	MA	CEM	SC	ST	DOC	CW	RE	YG	MS	\$MTI
EPD	8	2.0	58	88	22	5	0.60	9	13	18	0.81	-0.47	-0.31	40.30
%Rank	80	65	55	50	60	65	55	60	40	55	80	70	55	65

Lim-Flex (50) Bull HP / HB ELCX 438B LFM 2074236 11.10.14

ELCX Bullet Proof 438B ET **F**

EBFL YPSILANTI 420Y X AUTO POEM 273Y

	CED	BW	WW	YW	MA	CEM	SC	ST	DOC	CW	RE	YG	MS	\$MTI
EPD	11	2.8	84	120	21	6	1.45	8	11	32	0.95	-0.35	-0.07	55.53
%Rank	50	90	3	10	55	55	15	75	60	30	20	45	70	40



ELCX Bullet Proof 438B

Lim-Flex (75) Bull Polled / HB HWCB 406E LFM 2117062 03.17.17

HWCB Eye of the Storm **G**

ELCX CAESAR 331 C X FBFL PRINCESS KATE 406C

	CED	BW	WW	YW	MA	CEM	SC	ST	DOC	CW	RE	YG	MS	\$MTI
EPD	12	0.0	54	76	20	6	0.74	10	14	26	0.59	-0.25	0.08	51.13
%Rank	35	30	90	95	70	55	80	65	30	55	85	75	45	70

Lim-Flex (56) Bull HP / HB MAGS 218F LFM 2138718 02.04.18

MAGS Firestone 218F **H**

MAGS APPLE JACK X MAGS DAYSTAR

	CED	BW	WW	YW	MA	CEM	SC	ST	DOC	CW	RE	YG	MS	\$MTI
EPD	10	0.3	71	115	21	4	0.50	12	10	44	0.84	-0.34	-0.03	53.45
%Rank	65	35	25	15	55	90	90	30	75	10	40	50	65	50



HWCB Eye of the Storm



SSTO Best Bet 456B



MAGS Firestone 218F



AGRI Chairman 1C ET



PBRS Bunk House 48B



ELC Twisted Ex C561

Lim-Flex (43) Bull Polled / HB SSTO 456B LFM 2077532 10.03.14

SSTO Best Bet 456B ET

S A V HARVESTOR 0338 X ELCX TWILIGHT 114X

	CED	BW	VWV	YW	MA	CEM	SC	ST	DOC	CW	RE	YG	MS	SMTI
EPD	12	1.9	68	109	18	6	1.10	9	12	33	0.42	-0.02	0.48	68.29
%Rank	35	75	30	25	80	55	35	65	50	30	>95	>95	2	4

Lim-Flex (34) Bull HP / HB ELCX 170Z LFM 2014858 10.05.12

ELCX Balancer 170Z

TMCK BALANCER 173U X EBFL SAN JOSE 170X

	CED	BW	VWV	YW	MA	CEM	SC	ST	DOC	CW	RE	YG	MS	SMTI
EPD	9	2.9	73	115	25	5	0.95	9	8	49	1.07	-0.27	0.19	61.18
%Rank	80	95	20	15	20	75	55	65	90	5	10	65	25	20

Lim-Flex (50) Bull HP / HB PBRS 48B LFM 2057521 02.01.14

PBRS Bunk House 48B

MAGS YIP X LBAF SHAWNEE 60Z

	CED	BW	VWV	YW	MA	CEM	SC	ST	DOC	CW	RE	YG	MS	SMTI
EPD	10	3.6	80	140	22	6	0.90	12	13	51	0.39	-0.08	0.17	61.47
%Rank	65	>95	5	2	45	55	55	30	40	4	>95	>95	25	15

Angus Bull Polled / Black C561 AAA +*18755330 12.31.15

ELC Twisted Ex C561

BALDRIDGE WILLIE Y34 X RITA 9MA1 OF RITA 7067 PRED

	CED	BW	VWV	YW	MA	CEM	SC	ST	DOC	CW	RE	YG	MS	SMTI
EPD	-2	2.9	58	96	24	3	0.57	-	26	27	0.31	1.28	0.31	-
%Rank	95	85	45	55	55	90	65	-	15	80	80	2	75	-

Limousin (87) Bull HP / HB VORT 603D NPM 2105057 01.05.16

VL Daytona 603D

ALTER EGO X RMRK X'S AND O'S 086X

	CED	BW	VWV	YW	MA	CEM	SC	ST	DOC	CW	RE	YG	MS	SMTI
EPD	10	-0.1	61	91	22	5	0.86	10	16	24	0.86	-0.49	-0.37	39.07
%Rank	45	20	35	35	65	60	25	55	20	20	>95	95	35	45

Lim-Flex (75) Bull HP / Black AGRI 1C LFM 2092429 07.19.15

AGRI Chairman 1C ET

EF XCESSIVE FORCE X TGBC SWIZZLE 270W

	CED	BW	VWV	YW	MA	CEM	SC	ST	DOC	CW	RE	YG	MS	SMTI
EPD	9	-0.4	71	109	47	6	1.38	7	15	35	0.67	-0.25	0.04	54.93
%Rank	80	20	25	25	>95	55	20	85	20	25	70	70	50	45

Lim-Flex (75) Bull DP / HB ELCX 451F LFM 2279028 11.15.18

ELCX Fully Royal 451F

RIVERSTONE CROWN ROYAL X HBRL BASHFUL 451B

	CED	BW	VWV	YW	MA	CEM	SC	ST	DOC	CW	RE	YG	MS	SMTI
EPD	13	-0.4	56	84	23	9	1.14	13	12	17	0.73	-0.36	-0.16	44.04
%Rank	25	20	85	85	35	10	35	30	55	85	65	40	90	95

Limousin (62) Bull Polled / HB AUTO 120E LFM 2141555 04.17.17

AUTO King David 120E ET

AUTO KING JAMES 162Z X PBRS DUTCHES 790X

	CED	BW	VWV	YW	MA	CEM	SC	ST	DOC	CW	RE	YG	MS	SMTI
EPD	10	2.1	61	91	24	6	1.10	8	11	37	0.91	-0.41	-0.10	48.25
%Rank	65	80	60	65	25	55	35	75	60	20	30	30	75	75

Angus Bull Polled / Black 1707 AAA +*19139050 02.28.17

URF Brute 1707

QUAKER HILL RAMPAGE 0A36 X YON SARAH Y79

	CED	BW	VWV	YW	MA	CEM	SC	ST	DOC	CW	RE	YG	MS	SMTI
EPD	4	3.2	90	154	24	10	2.03	-	4	76	1.40	0.56	-0.057	-
%Rank	70	90	1	1	55	35	2	-	90	1	1	40	1	-

R&R
MARKETING

PO Box 60097
Nashville, TN 37206

**FIRST CLASS
PRE-SORTED
PAID**
Montezuma, Iowa
Permit No. 30

Catalog
designed
by

designs by
arin
www.designsbyarin.com

LOTS 70 - 100

COMMERCIAL BRED COWS ... SELLING IN GROUPS

All calving in the fall, from October to December,
bred to Lim-Flex bulls.

Here is an example of the quality of females
that represent this group of commercial bred females.

