

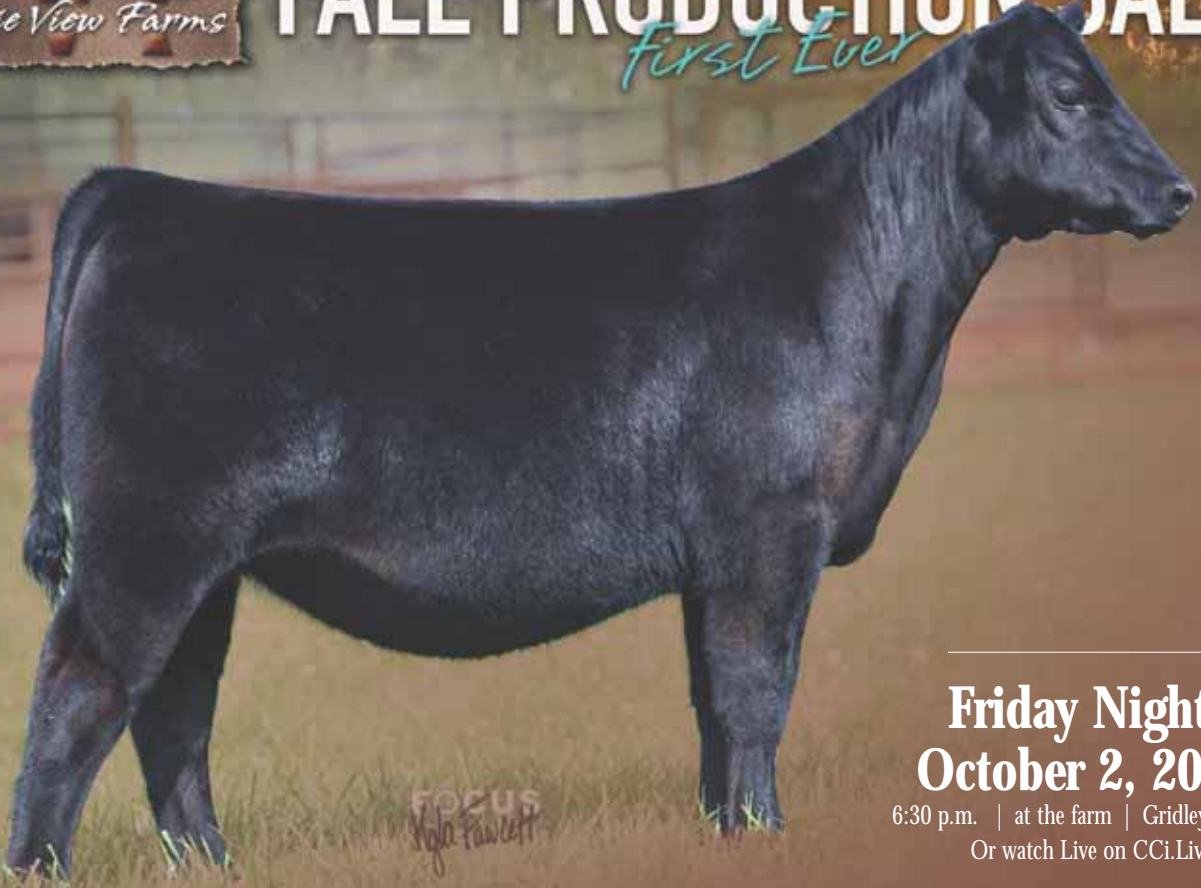


FOCUS  
Nola Fawcett



# FALL PRODUCTION SALE

*First Ever*



FOCUS  
Nola Fawcett

**Friday Night,  
October 2, 2020**

6:30 p.m. | at the farm | Gridley, Illinois  
Or watch Live on CCI.Live



# FALL PRODUCTION SALE

*First Ever*

## Friday Night, October 2, 2020

6:30 p.m. | at the farm | Gridley, Illinois

Or watch Live on CCI.Live



### A Year of Firsts ...

For the past 25 years, we have sold cattle in the fall in a variety of methods.

While Private Treaty Sales as well as 12 years of an online auction format have served us well, we decided to change our sale opportunity by offering the best of our heifer calves and bred heifers through a live Production Sale Friday Night October 2nd at the farm in Gridley.

We were thankful that you, our PVF Family showed such support for our program during our Spring Production Sale earlier this year, and our online bidding platform leads us to offer a variety of ways for you to participate during the Fall Sale as well. We welcome you to come view the cattle at any time before our sale October 2nd. Join us on the day of the sale, where we will have as many precautions in place to allow for a safe visit to the sale. Or participate live online in the auction using CCI.Live's easy to use platform.

This sale offering is the first opportunity to purchase PVF genetics this fall, and this select group of 39 show heifers, 12 bred heifers, and a donor are the best we have ever offered. We are excited for you to see them and participate in our PVF program.

If you have any questions, please call any of us at any time! We will offer a boxed supper at 5:30 p.m. and begin the sale at 6:30 p.m.

- Alan & Theresa      - Brandon & Cathy

**AUCTIONEER ...** Cody Lowderman, 309.833.5543

### RINGMEN

Casey Jentz .....608.234.1998	John Dickinson.....916.806.1919
Bruce Bradley .....417.848.3457	Shane Ryan .....309.391.7490

### SALE DAY PHONES

Alan Miller .....217.840.6935	Brandon Jones.....309.370.1081
Theresa Miller.....217.649.1990	Cathy Jones.....309.258.1266
Rance Long.....918.510.3464	Kyle Chrislaw .....608.751.9640
Curtis Harsh.....740.272.0339	

### HOTEL ACCOMMODATIONS

Holiday Inn & Suites Bloomington Airport .....309.662.4700  
3202 E.Empire Street, Bloomington, IL 61704 \*\* Ask for the Prairie View Farms block for \$105/night.



**INTERNET COVERAGE ...** The sale will be covered live by CCI.Live. Register for a bid number to bid online at [www.cci.live](http://www.cci.live) or through [www.pvfangus.com](http://www.pvfangus.com). If you have questions registering to bid, contact CCI.Live's Whitney Andras at 405.714.7929 or 516.366.0734.

**HERD HEALTH ...** All cattle selling will be accompanied by proper health certificates for immediate shipment.

**TRUCKING ARRANGEMENTS ...** We are glad to assist you with trucking arrangements on your purchases.

**TERMS & CONDITIONS ...** Cattle sell under the Terms & Conditions as recommended by the American Angus Association.

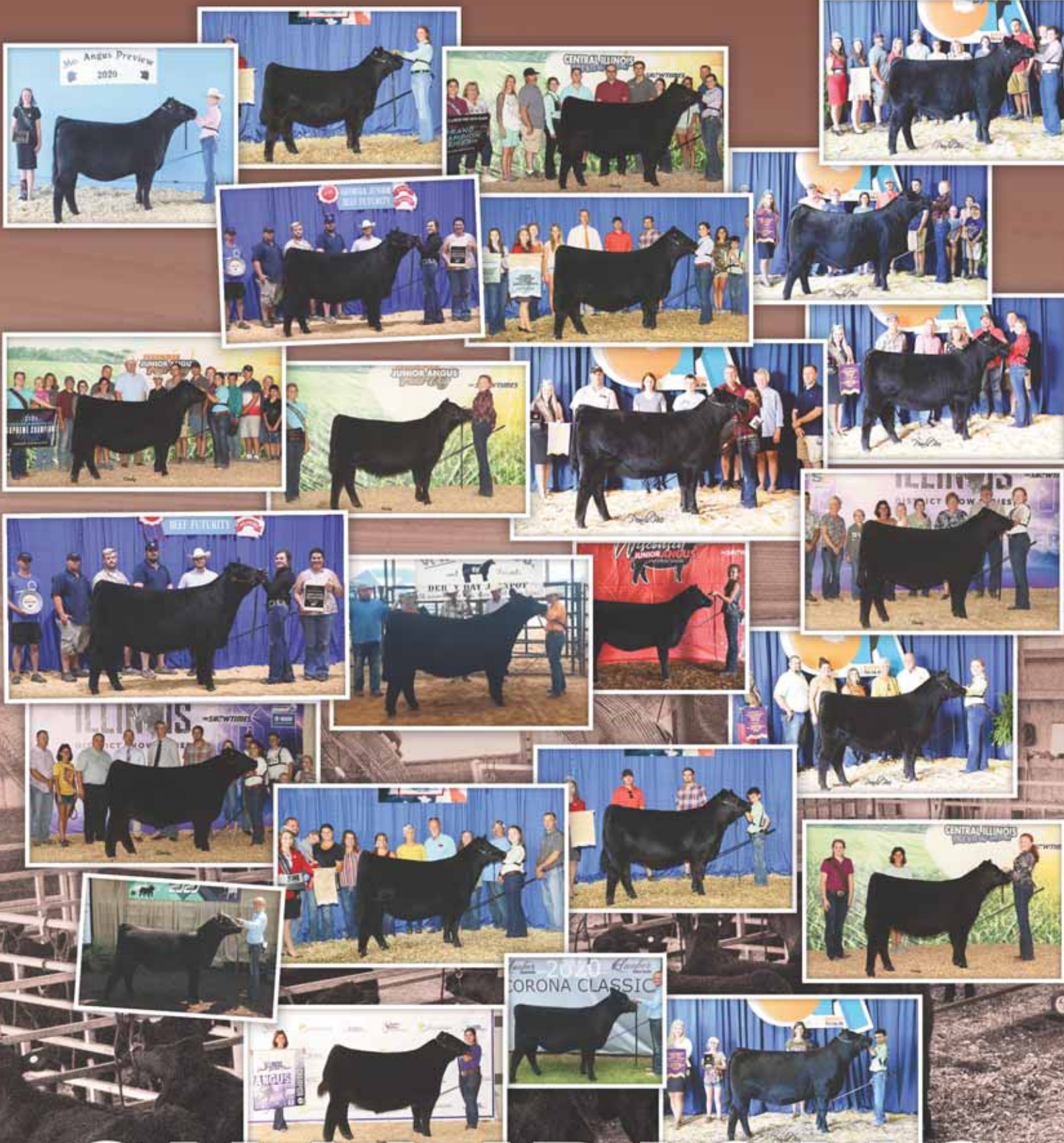
**EMBRYOS INTEREST ...** PVF will be retaining 1/2 embryo interest on heifers - Lots 1, 2, 3, 4, 5, 6, 7, 8, 9, 10, 11, 12, 19, 25, 26 & 27 selling in this offering. Contact Alan for more details.

**DIRECTIONS TO THE SALE ...** From Gridley, IL and Route 24 go 2.8 miles north on Center St. Address: 10788 N 250 East Rd., Gridley, IL 61744

**AIRPORT ...** 1 hour and 45 minutes to Chicago Midway (MDW); 30 minutes to Bloomington, Illinois (BMI); & 50 minutes to Peoria, Illinois (PIA). Contact Alan or Theresa for any help with travel arrangements.

**SALE FORMAT ...** A video will play of each Lot as the sale happens. The heifers and cows will all be available for viewing outside of the sale barn and will not be coming into the sale ring during the auction.

**INSURANCE ...** Available through James F Bessler Inc., Livestock Mortality Insurance, 815.762.2641.



# CHAMPIONS

2020

# BLACKBIRD *Family*



*Lot 1*



PVF BLACKBIRD 3070, DAM OF LOT 1



PVF THE NATURAL 7042, SIRE OF LOT 1



HOFFMAN H/G BLACKBIRD 720, MATERNAL SIB TO LOT 2



PVF BLACKBIRD 3071, MATERNAL SIB TO LOT 2



*Lot 2*

*Lot 1* **PVF BLACKBIRD 0253**  
 [cow +\*19800108] [calved: 04.02.2020]

	BEPD	WEPD	YEPD	MILK	SC
EPDs	+3.7	+60	+96	+25	+190

- PVF THE NATURAL 7042
- PVF INSIGHT 0129
- PVF BLACKBIRD 3127
- PVF BLACKBIRD 3070
- DAMERON FIRST CLASS
- ALL PVF BLACKBIRD 645

Retaining half embryo interest.  
 Combining PVF The Natural 7042 with the dam of Blacklist provides all the best of the most current PVF genetics. The now deceased PVF The Natural 7042, drew everyone's attention this summer siring a popular division champion at the National Junior Angus Show. PVF Blackbird 3070 is a full sister to the past North American International Livestock Exposition and Fort Worth Stock Show Grand Champion Female, and is a direct daughter of the foundation Blackbird 645 cow. This cow produces as much power and shape as any female ever at PVF and combining that with the tremendous look, style and balance that The Natural is becoming known for has resulted in a popular choice for Lot 1 in our first ever Fall Production Sale.

*Lot 2* **PVF BLACKBIRD 0255**  
 [cow +\*19809477] [calved: 04.07.2020]

	BEPD	WEPD	YEPD	MILK	SC
EPDs	+3.8	+46	+80	+17	+163

- C&C PRIORITY 1428B EXAR
- DAMERON FIRST CLASS
- EXAR PRINCESS 7879
- ALL PVF BLACKBIRD 645
- LEACHMAN SAUGHATCHEE 3000C
- PVF BLACKBIRD 201

Retaining half embryo interest.  
 Reaching into the archives, Lot 2 may be the final direct daughter of the foundation Blackbird 645 ever to be offered at Prairie View Farms. Her dam's many accomplishments not only include 3070, the dam of Blacklist, but also PVF Blackbird 3071, a past North American International Livestock Exposition and Fort Worth Stock Show Grand Champion for Austin Nowatzke, as well as PVF Blackbird 3127, who is rapidly ascending to the top of the donor pen at PVF and has produced PVF The Natural 7042, and Lots 3-6 in this sale. 645 was also the dam of Hoffman H/G Blackbird 720, the Grand Champion Female of the 2017 National Junior Angus Show for Maddy Udell. This female has the look to win as much as anything ever produced by 645, and the pedigree to carry on the production history of her many famous sisters.



Lot 3

**3** **PVF BLACKBIRD 0213**  
 [cow +\*19800282] [calved: 02.02.2020]  
 BEPD WEPD YEPD MILK SC  
 EPDs +2.6 +53 +84 +24 +156

**4** **PVF BLACKBIRD 0217**  
 [cow +\*19800284] [calved: 02.08.2020]  
 BEPD WEPD YEPD MILK SC  
 EPDs +3.5 +59 +95 +19 +156

DAMERON FIRST CLASS EXG RS FIRST RATE S903 R3  
 DAMERON NORTHERN MISS 3114  
 PVF WINDFALL SCC 9005  
 PVF BLACKBIRD 3127 ALL PVF BLACKBIRD 645

LOT 3 & 4 - Retaining half embryo interest.

Continuing the tradition of the Blackbird quality, this pair of flush sisters sired by the many times ROV Sire of the Year First Class and produced by the dam of PVF The Natural 7042, offer a unique combination of show ring and donor potential. 3127 has also produced PVF Blackbird 7113, who was selected Third Overall heifer at the Illinois State Fair in 2018 for Olivia Caldwell, and PVF Blackbird 8001 whose many wins include Champion Angus at the Illinois Beef Expo for Ashton Dillow.



Lot 4



PVF BLACKBIRD 3127, DAM OF LOTS 3, 4, 5 & 6



Lot 5

**5** **PVF BLACKBIRD 0202**  
 [cow +\*19797649] [calved: 01.12.2020]  
 BEPD WEPD YEPD MILK SC  
 EPDs +4.5 +71 +119 +14 +185

**6** **PVF BLACKBIRD 0203**  
 [cow +\*19797650] [calved: 01.14.2020]  
 BEPD WEPD YEPD MILK SC  
 EPDs +3.3 +60 +100 +19 +183

PVF BLACKLIST 7077 PVF INSIGHT 0129  
 PVF BLACKBIRD 3070  
 PVF WINDFALL SCC 9005  
 PVF BLACKBIRD 3127 ALL PVF BLACKBIRD 645



Lot 6

LOT 5 & 6 - Retaining half embryo interest.

Combining Blacklist with the dam of The Natural resulted in two of the most powerful females ever produced at Prairie View Farms. Unmatched power, shape and stoutness best describes these two females, while still offering the look and style that their dam stamps in her progeny. Along with 3127's other accomplishments, she also produced PVF Blackbird 7022, Grand Champion Female at the Illinois State Fair Open Show for Brecken Craig.

# MISSIE *Family*



*Lot 7*



*Lot 8*



PVF MISSIE 4149, FULL SISTER TO LOTS 7 & 8

*lot* **7** **PVF MISSIE 0227**  
 [cow +\*19800101] [calved: 02.23.2020]

	BEPD	WEPD	YEPD	MILK	SC
EPDs	+3.6	+48	+85	+21	+215

*lot* **8** **PVF MISSIE 0087**  
 [cow +\*19800111] [calved: 04.24.2020]

	BEPD	WEPD	YEPD	MILK	SC
EPDs	+2.6	+39	+70	+20	+161

- C&C PRIORITY 1428B EXAR DAMERON FIRST CLASS
- PVF MISSIE 0084 EXAR PRINCESS 7879
- SAV BISMARCK 5682
- PVF MISSIE 790

LOT 7 & 8 - Retaining half embryo interest.

Two full sisters to PVF Missie 4149, Grand Champion Female of the 2015 National Junior Angus Show for Esther McCabe. The dam of these females, PVF Missie 0084, needs no introduction as she has produced more champions and sale toppers in the history of Prairie View Farms. These two daughters of C&C Priority have as much quality as any females ever produced in this mating. At a year from now, you'll likely have won more banners as anything in the offering.

# MISSIE *Family*



PVF MISSIE 5216, FULL SISTER TO LOT 9

*Lot 9*



PVF MISSIE 0084, DAM OF LOTS 7, 8, 9 & 10



*Lot 10*

## *Lot 9* PVF MISSIE 0233

[cow +\*19800373] [calved: 03.02.2020]

	BEPD	WEPD	YEPD	MILK	SC
EPDs	+1.5	+46	+84	+17	+181

- C&C MCKINLEY 3000 EXAR
- DAMERON FIRST CLASS
- RAC WINNIE 7456
- SAV BISMARCK 5682
- PVF MISSIE 0084
- PVF MISSIE 790

Retaining half embryo interest.

A full sister to the \$100,000 PVF Missie 5216, who was Reserve Grand Female at the National Junior Angus Show for Cheyenne Jones, and whose many winnings resulted in her being the Reserve ROV Show Heifer of the Year. While this heifer's combination of power and balance offer as much show ring potential as any in the lineup, her pedigree indicates as much donor potential as we have to offer. While full sibs to this female have collected a long list of championships, they are proving to be even more impressive in the donor pen. One of her numerous full sibs, PVF Missie 5245 was not only a past National Western Stock Show and North American International Division Champion for Morgan Scillaci but also went on to produce PVF Marvel 9185 for Select Sires and PVF Reddington 9186 for ABS.

## *Lot 10* PVF MISSIE 0243

[cow +\*19801807] [calved: 03.07.2020]

	BEPD	WEPD	YEPD	MILK	SC
EPDs	+2.3	+47	+83	+19	+155

- COLBURN PRIMO 5153
- DAMERON FIRST CLASS
- SILVEIRAS SARAS DREAM 1339
- SAV BISMARCK 5682
- PVF MISSIE 0084
- PVF MISSIE 790

Retaining half embryo interest.

Combining one of the most heavily used show ring sires of recent times, with the greatest producer of champions ever to work at Prairie View Farms, PVF Missie 0243 is a massively built, powerfully structured female who will stand an elite level of competition. Many full sibs to this female were very successful this summer, including PVF Missie 9112, the South Dakota State Fair Champion for Brynn Bullerman, and TLF Missie 33, the many time champion for Jaycie Schertz.

# MISSIE *Family*



*Lot 11*



PVF INSIGHT 0129, A MATERNAL SIB TO LOT 11



*Lot 12*



PVF MISSIE 6228, DAM OF LOT 12

## *Lot 11* PVF MISSIE 0221

[cow +\*19800099] [calved: 02.10.2020]

	BEPD	WEPD	YEPD	MILK	SC
EPDs	+3.5	+39	+70	+20	+168

- C&C PRIORITY 1428B EXAR
- DAMERON FIRST CLASS
- EXAR PRINCESS 7879
- PVF MISSIE 790
- PVF NEW HORIZON 001
- PVF MISS RAPTOR 024

Retaining half embryo interest.

A true sale highlight, PVF Missie 0221 is a maternal sister to many of our all-time greats, including PVF Insight 0129 and PVF Missie 0084. In addition, she is a full sister to PVF Missie 6228, the past National Western Stock Show Reserve Grand Female and the dam of Genflo Missie 819, the popular division champion at the 2020 National Junior Angus Show. This female combines tremendous rib shape, mass and dimension with a beautiful front end that gives her a maternal look that will be successful at all levels of competition.

## *Lot 12* PVF MISSIE 0086

[cow +\*19800110] [calved: 04.20.2020]

	BEPD	WEPD	YEPD	MILK	SC
EPDs	+3.2	+51	+80	+24	+167

- PVF THE NATURAL 7042
- PVF INSIGHT 0129
- PVF BLACKBIRD 3127
- PVF MISSIE 6228
- C&C PRIORITY 1428B EXAR
- PVF MISSIE 790

Retaining half embryo interest.

A full sister to Genflo Missie 819, the popular summer division champion at the 2020 National Junior Angus Show. Combining one of the top young donors in the Missie cow family, who was herself a past National Western Stock Show Reserve Grand Female, with the rare genetics of the now deceased PVF The Natural 7042, resulted in one of our very top younger show heifer prospects in a unique genetic package. In her short donor career, 6228 produced the very popular PVF Missie 9214, a \$45,000 purchase as Lot 1 in our 2020 Spring Sale and was the Late Summer Champion at the 2020 National Junior Angus Show for Cassidy Barker.

# MISSIE *Family*



Lot 13



Lot 14

**13** **PVF DLX MISSIE 0300**  
 [cow +\*19797658] [calved: 01.29.2020]

	BEPD	WEPD	YEPD	MILK	SC
EPDs	-0.7	+39	+76	+23	+181

**14** **PVF DLX MISSIE 0304**  
 [cow +\*19800100] [calved: 02.11.2020]

	BEPD	WEPD	YEPD	MILK	SC
EPDs	+2.3	+61	+97	+37	+184

- PVF THE NATURAL 7042
- PVF INSIGHT 0129
- PVF BLACKBIRD 3127
- C&C MCKINLEY 3000 EXAR
- PVF MISSIE 0084
- PVF MISSIE 5245



PVF MISSIE 5245,  
DAM OF LOTS 13, 14, 15 & 16.

Two exciting maternal sisters to PVF Marvel 9185 and PVF Reddington 9086, who were selected by Select Sires and ABS and were features of our 2020 Spring Sale. The dam of these females is a daughter of the legendary PVF Missie 0084 and was a past North American International Livestock Exposition and National Western Stock Show Division Winner. 0300 is flawless in her design and impeccable in her structure, while 0304 adds extra stoutness and power to a beautiful pattern.

**15** **PVF DLX MISSIE 0301**  
 [cow +\*19797659] [calved: 02.05.2020]

	BEPD	WEPD	YEPD	MILK	SC
EPDs	+1.7	+58	+101	+23	+225

- PVF BLACKLIST 7077
- PVF INSIGHT 0129
- PVF BLACKBIRD 3070
- C&C MCKINLEY 3000 EXAR
- PVF MISSIE 0084
- PVF MISSIE 5245

A powerful full sister to two of the most talked about young bulls at the Yards in Denver last year, PVF Marvel 9185 and PVF Reddington 9186. This female exhibits extra stoutness from the ground up and has worlds of rib shape and mass to go with an attractive front end.



Lot 15

**16** **PVF MISSIE 0088**  
 [cow +\*19800112] [calved: 04.24.2020]

	BEPD	WEPD	YEPD	MILK	SC
EPDs	+0.7	+54	+97	+25	+220

- PVF INSIGHT 0129
- SAV BRILLIANCE 8077
- PVF MISSIE 790
- C&C MCKINLEY 3000 EXAR
- PVF MISSIE 0084
- PVF MISSIE 5245

Sired by the many time ROV Sire of the Year, PVF Insight 0129 and descending from the Missie cow family, this female is as deep and bold and ideal in her cow look as you can ask of one. Her dam is rapidly ascending to the top of the donor pen at PVF, and this female has everything it takes to follow in her footsteps when her show career is over.



Lot 16

# PROVEN QUEEN *Family*



*Lot 17*



PVF PROVEN QUEEN 4032, DAM OF LOT 17



PVF PROVEN QUEEN 3175, DAM OF LOT 18



*Lot 18*

## *Lot* 17 **PVF TCF PROVEN QUEEN 008**

[cow 19818369-] [calved: 02.15.2020]

EPDs	BE PD	WE PD	YE PD	MILK	SC
+3.5	+59	+100	+21	+187	

- CONLEY EXPRESS 7211
- SMA WATCHOUT 482
- DPL SANDY 3040
- PVF INSIGHT 0129
- PVF PROVEN QUEEN 4032
- PVF PROVEN QUEEN 2106

Sired by the popular Conley Express 7211, from our foundation Proven Queen cow family, this heifer's dam, PVF Proven Queen 4032 has produced many favorites for the PVF and Talon Crest programs. 008 is a fault free female that is simply complete from end to end. She combines power and performance in an attractive package and is sure to be one of the best in the next generation of Proven Queens.

## *Lot* 18 **PVF PROVEN QUEEN 0251**

[cow +\*19810632] [calved: 03.31.2020]

EPDs	BE PD	WE PD	YE PD	MILK	SC
+3.4	+57	+100	+25	+199	

- WB PENDLETON 708 PVF SWSN
- DAMERON BEST IN CLASS
- WB PVF SF LUCY 4033
- PVF INSIGHT 0129
- PVF PROVEN QUEEN 3175
- DAMERON PVF PROVEN QUEEN010

A daughter of the National Western Stock Show Grand Champion Bull, who was produced by an Insight daughter who was a many time champion herself, including a division win at the National Junior Angus Show for Esther McCabe. The first Pendleton progeny took the show scene by storm this summer, winning numerous state shows and classes at the National Junior Angus Show. PVF Proven Queen 3175 descends from the foundation Proven Queen 010, whose many accomplishments include producing the \$52,000 Lot 1 Female in our 2018 PVF Spring Production Sale.

# PROVEN QUEEN *Family*



*Lot 19*



PVF PROVEN QUEEN 8256,  
FULL SISTER TO LOT 19



PVF PROVEN QUEEN 5250, DAM OF LOTS 19 & 20



*Lot 20*

## *Lot 19* PVF PROVEN QUEEN 0204

[cow +\*19797651] [calved: 1.16.2020]

	BEPD	WEPD	YEPD	MILK	SC
EPDs	+3.3	+56	+95	+15	+185

PVF INSIGHT 0129

SAV BRILLIANCE 8077

PVF MISSIE 790

PVF PROVEN QUEEN 5250

C&C MCKINLEY 3000 EXAR

PVF PROVEN QUEEN 2108

Retaining half embryo interest.

Featuring a full sister to PVF Proven Queen 8256, a past PVF Production Sale feature who went on to be the Reserve Champion of the North American International Livestock Exposition. This female is overwhelming in her body mass and dimension and combines that with a beautifully balanced look. Her dam, PVF Proven Queen 5250, was a many time champion for Korey Moser, including a division at the National Junior Angus Show and Reserve Grand Champion at the Atlantic National Junior Show, and has continued her success as an elite producer of champions both for PVF and the K&J Angus Programs.

## *Lot 20* PVF PROVEN QUEEN 0246

[cow +\*19800106] [calved: 03.09.2020]

	BEPD	WEPD	YEPD	MILK	SC
EPDs	+4.2	+57	+97	+17	+183

WB PENDLETON 708 PVF SWSN

DAMERON BEST IN CLASS

WB PVF SF LUCY 4033

PVF PROVEN QUEEN 5250

C&C MCKINLEY 3000 EXAR

PVF PROVEN QUEEN 2108

Combining the Denver Champion, Pendleton, with the many time champion PVF Proven Queen 5250 has created a female with the look to be competitive at any level. This heifer is ideal in her rib shape and combines that with an exquisite front end that will be sure to grab any judges' attention.

# MISSIE *Family*



*Lot 21*



PVF MISSIE 4149, DAM OF LOTS 21 & 22



PVF MISSIE 4149, DAM OF LOTS 21 & 22



*Lot 22*

## *Lot* 21 **PVF MISSIE 0092**

[cow \*19800113] [calved: 05.02.2020]

EPDs	BEPD	WEPD	YEPD	MILK	SC
+4.7	+54	+96	+18	+192	

- PVF INAUGURATION 6174
- DAMERON FIRST CLASS
- PVF MISSIE 790
- C&C PRIORITY 1428B EXAR
- PVF MISSIE 0084
- PVF MISSIE 4149

Stacking the Missie cow family and First Class in a potent pedigree that is sure to produce championships, this daughter of the National Junior Angus Show Grand Champion Female, PVF Missie 4149 is sired by the Genex maternal brother to PVF Insight 0129. This female has extra grow and power with the champion look that will surely be ultra-competitive in the summer division.

## *Lot* 22 **PVF MISSIE 0209**

[cow +\*19801806] [calved: 01.24.2020]

EPDs	BEPD	WEPD	YEPD	MILK	SC
+4.1	+52	+88	+11	+154	

- COLBURN PRIMO 5153
- DAMERON FIRST CLASS
- SILVEIRAS SARAS DREAM 1339
- C&C PRIORITY 1428B EXAR
- PVF MISSIE 0084
- PVF MISSIE 4149

Combining one of the most heavily used sires of champions in recent times with the Missie cow family has produced a big-time contender. 4149, in addition to being Reserve Grand Heifer at Denver herself, has produced numerous champions including PVF Missie 8246, whose many accomplishments most recently include Champion Senior Yearling at the 2020 National Junior Angus Show for Ashton Dillow.

# MISSIE *Family*



*Lot 23*



PVF MISSIE 6311, DAM OF LOTS 23 & 24



*Lot 24*

*Lot* **23** **PVF MISSIE 0206**

[cow +\*19797653] [calved: 01.17.2020]

EPDs	BEPD	WEPD	YEPD	MILK	SC
	+7.0	+64	+108	+24	+203

*Lot* **24** **PVF MISSIE 0211**

[cow +\*19797656] [calved: 01.25.2020]

EPDs	BEPD	WEPD	YEPD	MILK	SC
	+4.3	+56	+95	+21	+183

- PVF INAUGURATION 6174
- PVF MISSIE 6311
- DAMERON FIRST CLASS
- PVF MISSIE 790
- PVF SURVEILLANCE 4129
- PVF MISSIE 0084

Two incredible January full sibs by the Genex sire PVF Inauguration 6174. The dam of these females is one of the greatest daughters of PVF Surveillance 4129, who was a past Atlantic National Division Champion and was selected Supreme at the Iowa Angus Preview Show for Korey Moser. This powerful PVF and K&J Angus donor is a direct daughter of PVF Missie 0084, the all-time high-income producing cow in the history of PVF.

# MISSIE *Family*



*Lot 25*



PVF MISSIE 3078, DAM OF LOT 25



PVF MISSIE 1148, DAM OF LOT 26.



*Lot 26*

## *Lot* 25 **PVF MISSIE 0249**

[cow +\*19800107] [calved: 03.25.2020]

EPDs	BEPD	WEPD	YEPD	MILK	SC
+3.1	+53	+82	+22	+176	

{ PVF THE NATURAL 7042  
PVF MISSIE 3078

PVF INSIGHT 0129  
PVF BLACKBIRD 3127  
DAMERON FIRST CLASS  
PVF MISSIE 790

Retaining half embryo interest.

A full sister to the \$54,000 high selling female of the 2020 PVF Spring Production Sale. Stacking the Missie and Blackbird cow families, this female was produced by a maternal sister to Insight and was a past National Junior Angus Show Division Champion for Lakyn Davis. This female has the angularity and femininity to grab any judges' attention and is backed by a stacked PVF pedigree that will produce champions when she is done being one herself.

## *Lot* 26 **PVF MISSIE 0205**

[cow +\*19797652] [calved: 01.17.2020]

EPDs	BEPD	WEPD	YEPD	MILK	SC
+3.7	+51	+88	+22	+210	

{ PVF BLACKLIST 7077  
PVF MISSIE 1148

PVF INSIGHT 0129  
PVF BLACKBIRD 3070  
PVF WINDFALL SCC 9005  
PVF MISSIE 790

Retaining half embryo interest.

A powerful Blacklist daughter whose dam was a past featured donor of an Embryos on Snow Sale, where she sold half interest for \$75,000. 1148 has produced many champions through the years, including the Supreme Champion of the Houston Livestock Show for Callie West. The dam of this female is a maternal sister to PVF Insight 0129, and PVF Missie 0084, and herself has been one of the top producers at PVF.

# MISSIE *Family*



PVF THE NATURAL 7042, SIRE OF LOT 27

*Lot 27*

## *lot* 27 PVF MISSIE 0200

[cow +\*19797648] [calved: 01.10.2020]

EPDs	BEPD	WEPD	YEPD	MILK	SC
	+1.7	+48	+81	+25	+178

- PVF THE NATURAL 7042
- PVF INSIGHT 0129
- PVF BLACKBIRD 3127
- C&C MCKINLEY 3000 EXAR
- PVF MISSIE 5210
- PVF MISSIE 0084

Retaining half embryo interest.

One of the most eye catching females in the entire offering, PVF Missie 0200 combines the best of the Blackbird and Missie cow families, whose now deceased sire, PVF The Natural 7042 is growing in popularity every day, and her dam, PVF Missie 5210, is a full sister to the \$100,000 PVF Missie 5216, whose many accomplishments include being Reserve Grand Female at the 2016 National Junior Angus Show for Cheyenne Jones. This female's structure and build is nearly impeccable and will be sure to get her in the winner's circle at any level of competition.



*Lot 28*



PVF MISSIE 6298,  
DAM OF LOTS 28 & 29

## *lot* 28 PVF MISSIE 0252

[cow Pending] [calved: 04.01.2020]

## *lot* 29 PVF MISSIE 0250

[cow Pending] [calved: 03.26.2020]

EPDs	BEPD	WEPD	YEPD	MILK	SC

- PVF THE NATURAL 7042
- PVF INSIGHT 0129
- PVF BLACKBIRD 3127
- C&C PRIORITY 1428B EXAR
- PVF MISSIE 6298
- PVF MISSIE 0084

Produced by a full sister to the past National Junior Angus Show Grand Champion, PVF Missie 4149, PVF Missie 6298 is a top selling female of a past PVF Production Sale and among her many accomplishments was named Third Overall at the Oklahoma Youth Expo for Victoria Gerken. Her initial embryo production proves she will be a force to reckon with in the years to come.



*Lot 29*

# LUCY/ PRINCESS *Family*



*Lot 30*



WB PVF LUCY 1052, DAM OF LOTS 30 & 31



*Lot 31*

## *Lot* 30 PVF LUCY 0093

[cow +\*19804972] [calved: 05.08.2020]

EPDs	BEPD	WEPD	YEPD	MILK	SC
	+4.6	+64	+108	+18	+226

## *Lot* 31 PVF LUCY 0094

[cow +\*19804973] [calved: 5.08.2020]

EPDs	BEPD	WEPD	YEPD	MILK	SC
	+6.6	+65	+117	+20	+220

PVF BLACKLIST 7077

WB PVF LUCY 1052

PVF INSIGHT 0129  
 PVF BLACKBIRD 3070  
 PVF WINDFALL SCC 9005  
 THOMAS LUCY 7360

Two elite flush mates produced from the past National Western Stock Show Reserve Grand Champion Female, WB PVF Lucy 1052. The Lucy cow family has produced numerous champions for the PVF and Ward Brothers program including the National Western Stock Show champion Pendleton. These two females offer the combination of style, balance and power coupled with a potent pedigree to offer an exciting future.



*Lot 32*

## *Lot* 32 PVF PRINCESS 0043

[cow +\*19800103] [calved: 03.02.2020]

EPDs	BEPD	WEPD	YEPD	MILK	SC
	+2.9	+56	+97	+21	+204

PVF BLACKLIST 7077

EXAR PRINCESS 8063

PVF INSIGHT 0129  
 PVF BLACKBIRD 3070  
 PVF INSIGHT 0129  
 GREENS PRINCESS 1012

This maternal sister to the 2019 Grand Champion Female at the National Western Stock Show is from the Princess cow family who has created so many champions for the Express Ranch Program. This female offers exceptional length and muscle shape with a beautiful front end.



TIR NFF PRINCESS E307,  
 MATERNAL SISTER TO LOT 32

# PROVEN QUEEN *Family*

## 33 PVF PROVEN QUEEN 0047

[cow \*19800104] [calved: 03.05.2020]

	BEPD	WEPD	YEPD	MILK	SC
EPDs	+2.6	+67	+114	+18	+251

PVF BLACKLIST 7077

PVF INSIGHT 0129  
PVF BLACKBIRD 3070

PVF PROVEN QUEEN 6150

PVF INSIGHT 0129  
PVF PROVEN QUEEN 3033

Line bred to Insight from the Proven Queen Family, this female is produced from a past Reserve Division at the North American and National Western Stock Show. This heifer is flawless in her design, huge middled, and super attractive.

PVF PROVEN QUEEN 6150,  
DAM OF LOT 33



## 34 PVF PROVEN QUEEN 0018

[cow 19797657] [calved: 02.01.2020]

	BEPD	WEPD	YEPD	MILK	SC
EPDs	+1.4	+46	+72	+19	+179

PVF BLACKLIST 7077

PVF INSIGHT 0129  
PVF BLACKBIRD 3070

PVF PROVEN QUEEN 6211

PVF SURVEILLANCE 4129  
DAMERON PVF PROVEN QUEEN010

This Blacklist daughter has drawn the attention of many for her fault free design and amazing rib shape and mass. Her dam, PVF Proven Queen 6211, is a direct daughter of the past Junior Heifer Show division winner and was one of our top young Surveillance daughters.

PVF BLACKLIST 7077, SIRE OF LOTS 33 & 34



## 35 PVF PROVEN QUEEN 0049

[cow +\*19800105] [calved: 03.06.2020]

	BEPD	WEPD	YEPD	MILK	SC
EPDs	+3.1	+55	+85	+24	+175

PVF THE NATURAL 7042

PVF INSIGHT 0129  
PVF BLACKBIRD 3127

PVF PROVEN QUEEN 5087

DAMERON FIRST CLASS  
FCF SCC PVF PROVEN QUEEN 615

Descending from the famous Proven Queen 615 cow, whose many accomplishments include raising the Grand Champion Female at the 2016 National Western Stock Show, this female has a unique look with an ultra-neat front end and power throughout. This heifer's dam, PVF Proven Queen 5087, was a many time champion for Taylor Duckett, including Reserve Division at the National Junior Angus Show, and is proving to be a powerful donor for the PVF and Blue Drifter Programs.



PVF PROVEN QUEEN 5087,  
DAM OF LOT 35



## 36 PVF PROVEN QUEEN 0218

[cow +\*19800098] [calved: 02.08.2020]

	BEPD	WEPD	YEPD	MILK	SC
EPDs	+3.8	+49	+76	+18	+160

PVF SURVEILLANCE 4129

BC LOOKOUT 7024  
PVF ELLEN 9100

PVF PROVEN QUEEN 4109

PVF INSIGHT 0129  
DAMERON PVF PROVEN QUEEN010

Produced by another of our powerful Insight by Proven Queen 010 donors, this heifer is beautiful in her design and has that show heifer look from end to end. Our Surveillance daughters have proven to be some of the top producing cows we've ever raised, and this young female is sure to carry on that tradition when her show career is over.



PVF SURVEILLANCE 4129, SIRE OF LOT 36.



# BLACKBIRD *Family*



Lot 37



PVF BLACKBIRD 7001, DAM OF LOTS 37 & 38

## 37 PVF BLACKBIRD 0210

[cow +\*19810626] [calved: 01.24.2020]

BEPD	WEPD	YEPD	MILK	SC
+3.2	+59	+101	+18	+189

WB PENDLETON 708 PVF SWSN  
PVF BLACKBIRD 7001

DAMERON BEST IN CLASS  
WB PVF SF LUCY 4033  
COLBURN PRIMO 5153  
ALL PVF BLACKBIRD 645

This royally bred female is bred by the Denver Champion Pendleton and by a direct daughter of the foundation Blackbird 645. The dam of this female is a maternal sib to many of our top producers including the dams of PVF Blacklist 7077 and PVF The Natural 7042.



Lot 38

## 38 PVF BLACKBIRD 0005

[cow +\*19797655] [calved: 01.25.2020]

BEPD	WEPD	YEPD	MILK	SC
+0.2	+57	+89	+15	+184

PVF INSIGHT 0129  
PVF BLACKBIRD 7001

SAV BRILLIANCE 8077  
PVF MISSIE 790  
COLBURN PRIMO 5153  
ALL PVF BLACKBIRD 645

One of the top combination show heifer and cow prospects in the offering, this direct daughter of Insight carries the stoutness and power typical of the Blackbird cow family. Her dam, PVF Blackbird 7001, counts among her sisters the Grand Champion Females at the National Junior Angus Show, North American International Livestock Exposition and Fort Worth Stock Show.



Lot 39



PVF BLACKBIRD 3127, DAM OF LOT 39

## 39 PVF BLACKBIRD 0232

[cow +\*19800102] [calved: 02.28.2020]

BEPD	WEPD	YEPD	MILK	SC
+2.6	+47	+79	+136	+162

TGM COMPTON 1738  
PVF BLACKBIRD 3127

SILVEIRAS STYLE 9303  
DAMERON NORTHERN MISS 3198  
PVF WINDFALL SCC 9005  
ALL PVF BLACKBIRD 645

With a huge rib cage and an extra-long front end, this uniquely constructed female blends the show ring pedigree of TGM Compton with the proven production of champions found in the Blackbird cow family. The dam of this female produced PVF The Natural 7042, along with numerous champions at all levels of competition.

# BRED *Females*

*Lot* 40

## AF ANDERSON'S MISSIE 904

[cow +19492078] [calved: 02.16.2019]

EPDs	BEPD	WEPD	YEPD	MILK	SC
+2.3	+47	+83	+19	+155	

COLBURN PRIMO 5153

PVF MISSIE 0084

DAMERON FIRST CLASS  
SILVEIRAS SARAS DREAM 1339  
SAV BISMARCK 5682  
PVF MISSIE 790

Leading off the bred heifer division with an elite donor candidate, this daughter of the immortal PVF Missie 0084 has the style and balance combined with the power and stoutness and structure to be an A-list producer for years to come. Daughters of 0084 have continued to demonstrate her ability to produce the best Angus cows, as is demonstrated throughout this catalog.

Examined safe to calve 02.07.2021 to Hoffman New Way 25G.



*Lot 40*



PVF MISSIE 0084,  
DAM OF LOTS 40, 41 & 42

*Lot* 41

## PVF MISSIE 9104

[cow +\*19514619] [calved: 03.05.2019]

EPDs	BEPD	WEPD	YEPD	MILK	SC
-1.0	+37	+73	+25	+150	

COLBURN PRIMO 5153

PVF MISSIE 0084

DAMERON FIRST CLASS  
SILVEIRAS SARAS DREAM 1339  
SAV BISMARCK 5682  
PVF MISSIE 790

Another beautifully built product of the PVF Missie 0084 by Colburn Primo mating, this mating has produced many of our top sellers and champions in the past few years, including most recently PVF Missie 9112, Champion of the South Dakota State Fair for Brynn Bullerman.

Due to calve 02.08.2021 to sexed heifer PVF Insight 0129.



*Lot 41*

*Lot* 42

## PVF MISSIE 9041

[cow +\*19513900] [calved: 01.31.2019]

EPDs	BEPD	WEPD	YEPD	MILK	SC
+1.6	+46	+76	+27	+170	

PVF SURVEILLANCE 4129

PVF MISSIE 0084

BC LOOKOUT 7024  
PVF ELLEN 9100  
SAV BISMARCK 5682  
PVF MISSIE 790

Combining the unprecedented producing ability of 0084 with the maternal strength of PVF Surveillance 4129 has produced this beautifully designed bred heifer. 0084's record needs no introduction and our Surveillance females continue to prove themselves in the pasture as being amongst our best producing young cows.

Due to calve 02.26.2021 to Hoffman New Way 25G.



*Lot 42*

# BRED *Females*



*Lot 43*



*lot* **43**

## PVF PRINCESS 9049

[cow +\*19518821] [calved: 02.06.2019]

BEPD	WEPD	YEPD	MILK	SC
EPDs +3.9	+61	+103	+15	+169

- DAMERON FIRST CLASS
- EXAR PRINCESS 8063
- EXG RS FIRST RATE S903 R3
- DAMERON NORTHERN MISS 3114
- PVF INSIGHT 0129
- GREENS PRINCESS 1012

A true sale feature, 9049 is destined to be a powerful donor in somebody's pasture. This full sister to the 2019 National Western Stock Show Grand Champion Female is amongst the most powerful females we've ever produced at Prairie View Farms. With extra growth performance and power this female offers endless mating opportunities. Due to calve 02.14.2021 to PVF Marvel 9185.

TIR NFF PRINCESS E3007, FULL SISTER TO LOT 43.



*Lot 44*



PVF BLACKLIST 7077, SIRE OF LOTS 44 & 45.



*Lot 45*

*lot* **44**

## PVF PRINCESS 9313

[cow +19566698] [calved: 04.16.2019]

BEPD	WEPD	YEPD	MILK	SC
EPDs +2.9	+56	+97	+21	+204

*lot* **45**

## PVF PRINCESS 9102

[cow +\*19513918] [calved: 03.03.2019]

BEPD	WEPD	YEPD	MILK	SC
EPDs +3.3	+58	+106	+24	+216

- PVF BLACKLIST 7077
- EXAR PRINCESS 8063

- PVF INSIGHT 0129
- PVF BLACKBIRD 3070
- PVF INSIGHT 0129
- GREENS PRINCESS 1012

LOT 44 - Due 02.04.2021 to KR Cadillac Ranch.

LOT 45 - Due 02.19.2021 to SAV Rainfall 6846.

Lot 44 and 45 are two full sisters who are line bred to the great PVF Insight 0129, descending from the Princess cow family that has produced many champions for the Express program. They are maternal sibs of the Grand Champion Female of the 2019 National Western Stock Show and will be amongst the first Blacklist daughters to enter production. Blacklist's first calf crop put him on the map this summer as a potent show heifer producer, and with the maternal abilities of the Blackbird cow family, these two full sisters are sure to be standouts in the pasture.

**46** **PVF PROVEN QUEEN 9124**  
 [cow +\*19524006] [calved: 03.12.2019]

	BEPD	WEPD	YEPD	MILK	SC
EPDs	+5.5	+73	+120	+14	+176

- COLBURN PRIMO 5153
- PVF PROVEN QUEEN 4032
- DAMERON FIRST CLASS
- SILVEIRAS SARAS DREAM 1339
- PVF INSIGHT 0129
- PVF PROVEN QUEEN 2106

One of our very favorites all year, this extra stout Primo daughter is from the same Proven Queen cow line that has produced all of Amelia's champion Bred and Owned Females, as well as PVF TCF Frozen 6078, Grand Champion Bull of the 2017 National Junior Angus Show. This female is a legitimate donor candidate, whose royal pedigree will be an asset to any breeding program.

Due 02.17.2021 to KR Cadillac Ranch.



PVF PROVEN QUEEN 4032, DAM OF LOT 46

*Lot 46*

**47** **PVF PROVEN QUEEN 9091**  
 [cow +\*19513915] [calved: 02.27.2019]

	BEPD	WEPD	YEPD	MILK	SC
EPDs	+4.7	+58	+86	+34	+170

- PVF THE NATURAL 7042
- PVF PROVEN QUEEN 3033
- PVF INSIGHT 0129
- PVF BLACKBIRD 3127
- DAMERON FIRST CLASS
- PVF PROVEN QUEEN 602

A beautifully outlined daughter of the now deceased PVF The Natural 7042, that traces to the foundation PVF Proven Queen. The dam of this bred heifer is featured Lot 52 donor and amongst the many champions she has produced includes most recently the Grand Champion Female of the Central Illinois Preview Show and the Reserve Division Champion of the 2020 National Junior Angus Show for Emma Eathington.

Due to calve 02.09.2021 to KR Cadillac Ranch.



PVF PROVEN QUEEN 3033, DAM OF LOT 47.

*Lot 47*

**48** **PVF PROVEN QUEEN 9045**  
 [cow +\*19513901] [calved: 02.05.2019]

	BEPD	WEPD	YEPD	MILK	SC
EPDs	+1.2	+36	+60	+29	+139

- PVF INAUGURATION 6174
- PVF PROVEN QUEEN 5180
- DAMERON FIRST CLASS
- PVF MISSIE 790
- ELLINGSON SALUTE 3170
- PVF PROVEN QUEEN 3175

A direct daughter of the Genex sire, PVF Inauguration 6174, from the Proven Queen cow family, this female blends incredible depth of body and rib shape with a really feminine front end. She has an impeccable disposition.

Due to calve approximately 03.26.2021 to Schiefelbein Warranty 797.



PVF INAUGURATION 6174, SIRE OF LOT 48

*Lot 48*

# BRED *Females*



Lot 49



PVF BLACKBIRD 3127, DAM OF LOT 49

## 49 PVF BLACKBIRD 9072

[cow +\*19513908] [calved: 02.18.2019]

	BEPD	WEPD	YEPD	MILK	SC
EPDs	+1.8	+51	+89	+22	213

PVF BLACKLIST 7077  
PVF BLACKBIRD 3127

PVF INSIGHT 0129  
PVF BLACKBIRD 3070  
PVF WINDFALL SCC 9005  
ALL PVF BLACKBIRD 645

This maternal sister to PVF The Natural 7042, this female descends from the Blackbird cow family and is a full sister to Lots 5 and 6 in this offering. This female is flawless from the side, and extra stout from behind.

Due approximately 03.31.2021 to Schiefelbein Warranty 797.



Lot 50



PVF MISSIE 5245, DAM OF LOT 50.

## 50 PVF MISSIE 9300

[cow +\*19528069] [calved: 03.03.2019]

	BEPD	WEPD	YEPD	MILK	SC
EPDs	-0.3	+50	+81	+17	+176

COLBURN PRIMO 5153  
PVF MISSIE 5245

DAMERON FIRST CLASS  
SILVEIRAS SARAS DREAM 1339  
C&C MCKINLEY 3000 EXAR  
PVF MISSIE 0084

A maternal sister to Select Sires' PVF Marvel 9085 and PVF Reddington 9186, this daughter of Primo descends from the Missie cow family. Her dam, PVF Missie 5245 was herself a many time champion including Reserve Division at the North American International Livestock Exposition and the National Western Stock Show. 5245 also produced Lots 13-16 in this offering and will certainly be one of the top producing Missies in the years to come.

Due 02.27.2021 to Eathington SUBZERO.



Lot 51



PVF BLACKCAP 6313, MATERNAL SISTER TO LOT 51.

## 51 PVF BLACKCAP 9075

[cow +\*19513910] [calved: 02.20.2019]

	BEPD	WEPD	YEPD	MILK	SC
EPDs	+3.6	+54	+104	+26	+208

PVF INAUGURATION 6174  
MC BLACKCAP 3057

DAMERON FIRST CLASS  
PVF MISSIE 790  
SAV FIRST CLASS 0207  
MC BLACKCAP 706

Saving one of the best for last, this descendant of the Blackcap cow family is a maternal sib to the 4th Overall Female of the 2018 National Junior Angus Show. This daughter of Inauguration shows extra size, power and stoutness of hip. Her dam was added to the PVF Donor Pen to begin a new family and has not disappointed as she produces many farm favorites year in and year out.

Due 03.13.2021 to sexed heifer PVF Insight 0129.

P ON SALE

# PROVEN *Donor*



*Lot 52*

FOCUS



PVF PROVEN QUEEN 6150, this NAILE division winner is a daughter of PVF Proven Queen 3033.



PVF PROVEN QUEEN 9126, this Grand Champion of the 2020 Central Illinois Preview Show is a daughter of PVF Proven Queen 3033.



PVF PROVEN QUEEN 9126, Reserve Division Winner from the 2020 NJAS is a daughter of PVF Proven Queen 3033.

## *lot* 52 PVF PROVEN QUEEN 3033

[cow +\*17613502] [calved: 01.30.2013]

	BEPD	WEPD	YEPD	MILK	SC
EPDs	+4.7	+42	+70	+23	+150

**DAMERON FIRST CLASS**  
**PVF PROVEN QUEEN 602**

EXG RS FIRST RATE S903 R3  
DAMERON NORHTERN MISS 3114  
RITO 9FB3 OF 5H11 FULLBACK  
DAVIS PROVEN QUEEN 3026

Rarely does the opportunity present itself to acquire a proven featured donor in their entirety in the prime of their career. Being a direct daughter of the legendary PVF Proven Queen 602, the maternal siblings to this female who have won shows, topped sales and proven themselves in the pasture are too numerous to mention. 3033's illustrious production record includes producing PVF Proven Queen 9126, Champion Female of the Central Illinois Preview Show in 2020 and Reserve Division of the National Junior Angus Show for Emma Eathington, as well as PVF Proven Queen 6150, the Reserve Junior Yearling at the North American International Livestock Exposition and the National Western Shock Show for Madelyn Gerken. When we decided to host our first fall production sale, we committed to sharing our very best, and we could think of no better way than to pass on the opportunity to own the dam of the winningest heifer we raised this year.

Due about 4/9/21 to PVF Blacklist 7077

PVF FALL PROD



# FALL PRODUCTION SALE

*First Ever*

**Friday Night, October 2, 2020**

6:30 p.m. | at the farm | Gridley, Illinois  
Or watch Live on CCI.Live

