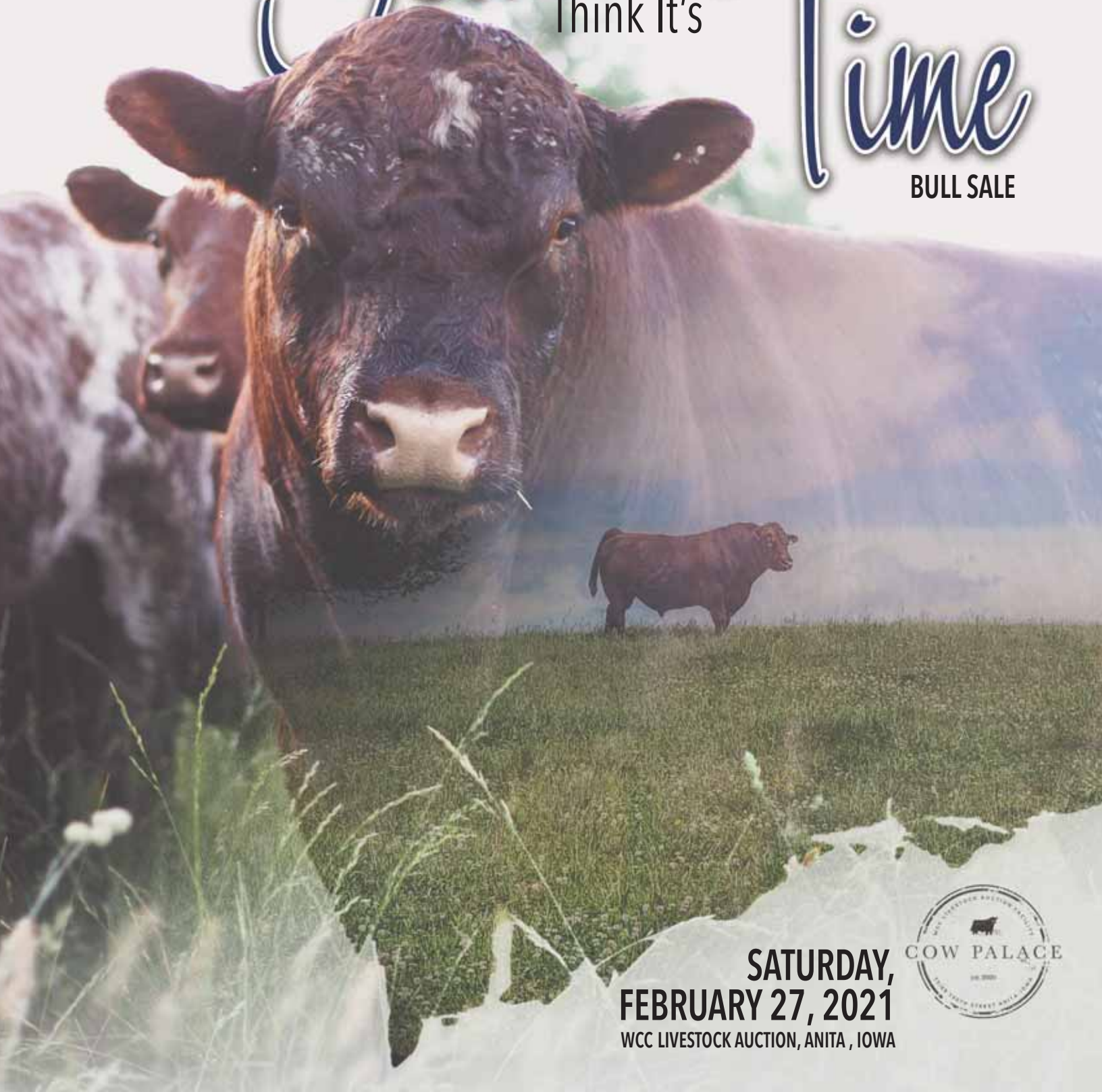


STUDER  
Don't

# You Think It's Time

BULL SALE



**SATURDAY,**  
**FEBRUARY 27, 2021**  
WCC LIVESTOCK AUCTION, ANITA, IOWA



We are excited to welcome everyone to the new platform of our annual "Don't You Think It's Time" Bull Sale. Our world has had lots of changes this last year, directing us to reflect on those things that are most important to us. At Studer Shorthorns and Gilman Shorthorns it is people and cattle. That is why we "think it's time" to offer our bulls through a live auction. To bring Shorthorn enthusiasts and breeders together, to evaluate a set of bulls and decide where they fit in their programs. These bulls are designed to enhance both the commercial and purebred herds alike.

We are excited to offer this quality set of bulls at the newly renovated WCC Cow Palace in Anita Iowa.

David Castle, one the biggest Shorthorn Enthusiast, would always remind us — "the cattle business is a people business!"

Hope you will join us!

Dale

*Dale W. Studer*



Dale: 641.344.8035 | Nate: 641.344.8487  
StuderShorthorns@yahoo.com | www.studershorthorns.com

Follow on   



The Gilman Family | Ethan, 515.360.1445  
www.gilmanshorthorns.com

Follow on  



All bulls are fed a limit based by-product ration for development.

## Yesterday, Today & Tomorrow

Quietly preserving the Shorthorn breed in the hills of Southwest Iowa.

STUDER  
Don't

You Think It's Time

BULL SALE



**SATURDAY,  
FEBRUARY 27, 2021**  
WCC LIVESTOCK AUCTION, ANITA, IOWA

## SCHEDULE ...

### *Friday, February 26th*

1:00 p.m. Cattle Available for viewing.  
Snacks & refreshments served throughout the day.

### *Saturday, February 27th*

8:00 am Coffee & Fresh Morning Donuts  
11:00 am Lunch served by an Award Winning Iowa Favorite,  
Zipps Pizza of Adair, Iowa  
Feature fresh pasta w/ meat sauce and chicken alfredo,  
cheese sticks, famous pizza, cookies & bars.  
1:00 pm **Don't You Think It's Time Bull Sale**  
WCC Cow Palace, Anita, Iowa

## SALE LOCATION ...

*WCC Cow Palace, 55169 730th Street, Anita, IA 50020*

*From Anita, Iowa: One mile West on Highway 83 and then turn South and go ¼. Located on West side of Road.*

## WATCH THE SALE LIVE ...

Watch and bid live at [www.livestockauction.tv](http://www.livestockauction.tv). Register and follow the auction in real time on the internet. For more information or support, call 817.725.8595. If you wish to follow the sale on the computer and bid by telephone, please call the sale day phone numbers or one of the consultants listed in our catalog.

Watch videos online by visiting  
[StuderShorthorns.com](http://StuderShorthorns.com) or  
[GilmanShorthorns.com](http://GilmanShorthorns.com)



## { SALE DAY PHONE }

Bert Moore .....	701.541.5035
Dale Studer .....	641.344.8035
Nate Studer .....	641.344.8487
Anita Studer .....	641.344.1435
Jenny Studer .....	319.530.3056
Collin Cory .....	515.729.4442
Mike Studer .....	515.341.6846
Ethan Gilman .....	515.360.1445
Cary Gilman .....	515.360.6006
Chance Will .....	712.249.6865
Ashley Will .....	712.249.8046

## { LIVESTOCK REPRESENTATIVES }

Mark Venteicher, <i>Auctioneer</i> .....	712.779.0169
Alan Sears, <i>Consultant</i> .....	970.396.7521
Brent Elam, <i>Consultant</i> .....	615.573.5881 or 615.680.689
Darryl Rahn, <i>Shorthorn Country</i> .....	217.473.1124
Mike Sorenson, <i>Livestock Plus</i> .....	641.745.7949
Matt Woolfolk, <i>ASA</i> .....	918.645.4322
Craig Studer, <i>Consultant</i> .....	515.341.0320
Bill Schermer, <i>Consultant</i> .....	641.425.2641
Mark Sullivan, <i>Consultant</i> .....	816.304.0050

## { SALE ACCOMMODATIONS }

Relax Inn & Suits, Adair, IA .....	641.742.5251
Americas Best Value Inn & Suites, Atlantic, IA .....	712.243.4723
Rock Island Inn & Suites, Atlantic, IA .....	712.243.1600



Welcome to WCC Cow Palace

Same Legacy. New Traditions.

We're excited to finally share our new adventure with all of you. In July 2020 we purchased this farm just outside of Anita, IA filled with beautiful oak trees, rolling hills, cattle just right out the back door, and the most perfect place to lay down roots and raise a family.

This farm along with the sale facility has immense meaning to us as Dwight and Chance were among the first to put their hard working hands into the construction from its foundation up. Dwight's dream was planted deep into the hearts of our family and to bring that to reality is a true gift.

Having been in this industry for many generations we knew this was the ideal fit for our family. It is our passion that WCC Cow Palace will continue create long lasting friendships and also help others producers promote their family legacy.

To say we are humbled, excited, and blessed would still be an understatement. We greatly appreciate all the love and support we have received from those around us.

Chance, Ashley, Kyser, Landrie, & Krosby

## { GENERAL SALE INFORMATION }

**Terms:** The terms of the sale are cash or check. Payment to be made to the clerk immediately following the sale and before the cattle are removed from the WCC Cow Palace. Purchasers or their representative must sign the bill of sale prior to leaving the sale site.

**Billed Accounts:** All billed accounts are due and expected within 10 days of the sale date.

**Insurance** will be available for your purchase at the sale through Harding & Harding. Contact either their representative or the clerk at the settlement desk.

**Health:** Each animal will be represented by a state approved health certificate for interstate shipment. Buyers should make themselves aware of the health requirements for their respective states. All vaccinations are up-to-date and cattle born at the consignors have been vaccinated. A list will be available on sale day listing any non-vaccinations.

**Breeding Guarantee:** All cattle sell under the Standard Breeding Guarantee recommended by the American Shorthorn Association.

**Liability:** Each animal will be at the buyer's risk as soon as sold, but will be cared for by the sellers for a reasonable amount of time. Neither the owners, employees, auctioneer, sale manager or other affiliated personnel can be responsible for any accidents, but they will make every effort to provide for the safety and comfort of those attending.

**Registration And Transfer:** All animals sell with completed pedigrees or applications for registration.

**Transportation:** The Don't you Think It's Time group will make every effort to assist you in your transportation needs. Local trucking will be available.

**Mail Bids:** Mailed or telephoned bids will be handled in a most confidential manner. If you are unable to attend the sale personally, simply contact a representative, a sale consultant or a member of the Don't You Think It's Time group far enough in advance prior to sale day. They will be able to assist you at ringside on sale day.

**Announcements** made sale day will take precedence over printed material in this catalog.

**General Update Information:** There will be added information available at the sale site that will list any additions to the catalog.



Zipp's Pizzeria was opened in Adair, Iowa in May of 2012. Since that time, we have served homemade pizza in a deck oven using fresh ingredients. We make our own dough and make three kinds of homemade sausage in house. Our crust is basically thin but we do have one thicker size crust.

We won Best Pizza in Iowa from a Travel Iowa contest in May of 2016. From there we have been awarded many awards from numerous web magazines and sites or whatever you want to call them such as Best Pizza in Iowa or the Place to Go for Pizza. We are in a small town so people travel distances to eat our pizza!

We now offer a very popular frozen pizza line with limited selections that is for sale at Zipp's location only. But we do have and deliver pizzas to area bars, winery's, and bowling alleys that span out 60 miles and they bake the pizzas at their location. We also started having non-profit organizations offer our frozen pizzas as a fundraiser and they have been a big hit and very successful for the groups. We also offer catering up to two hours away.

Hope you have great day with the Don't You Think It's Time Bull Sale and enjoy your meal!

# 1 STUDER'S GUSTO 119G

4304479 119G 100% SHORTHORN BULL 11.22.2019 RED/ POLLED

WESTON TRADEMARK 3RD  
DMH CHERRY FILLET ET  
MAID OF PROMISE H 189TH

SASKVALLEY ULTRA 12J  
DSF MYRTLE 61D ET  
SASKVALLEY MYRTLE 83N

BW  
78 lbs.  
WW  
778 lbs.

CED	BW	WW	YW	MK	TM	CEM	YG	CW	REA	FT	MB	SCEZ	SBMI	SF
16	-1.9	24	39	28	40	7	0	-7	0.07	-0.09	-0.04	60.74	109.52	39.58

Selling 50% semen interest and full possession.

May be the top of all our bull calves, Brock had him broke as a young calf, as he was his bred and owned bull to show but didn't have anywhere to show him last year. These Cherry Fillets are good for anyone, calving ease as well as easy keepers. They look well on grass or hay all the time. My older brother Mike told me this guy's sire, Cherry Fillet, looks like a buffalo! Mike's sight isn't any better than mine, that being said buffalos also do well on grass and I haven't pulled any buffalo calves to date! Weston Trademark the third worked well on Haumont cows going all the way back to the 60's. These are time tested genetics and stockmen across the country will fall in love with this bull. I have!

**OWNED BY STUDER SHORTHORNS**



# 2 STUDER'S GRAINBELT 120G

4306637 120G 100% SHORTHORN BULL 12.01.2019 RED/ POLLED

WESTON TRADEMARK 3RD  
DMH CHERRY FILLET ET  
MAID OF PROMISE H 189TH

DMH CHARLOTTE'S CHANCE  
DSF ANNE 42E  
DSF ANNE 84C

BW  
78 lbs.  
WW  
861 lbs.

CED	BW	WW	YW	MK	TM	CEM	YG	CW	REA	FT	MB	SCEZ	SBMI	SF
15	-1.4	33	52	24	40	8	0	-5	0.18	-0.08	-0.14	55.80	114.36	42.68

We are selling two 2019 Fall DMH Cherry Fillet sons. This bull is for sure a calving ease bull. His mother is one our first DMH Charlotte's Chance daughters. This guy is extremely deep and long sided with lots of true breed character including a real breeding bull head. He is a little older than other bulls in our sale and will cover a more sizeable group of heifers. These Cherry Fillet offspring are becoming some of the greatest breeding females. As a side note his namesake - Grainbelt - goes back a long way and was the favorite drink of the 'second' generation of Studer's, my Dad and his brothers!

**OWNED BY STUDER SHORTHORNS**



# 3 STUDER'S HOOCH 3H

4306505 3H 100% SHORTHORN BULL 01.15.2020 ROAN/ POLLED

Gafa MOCHICAN  
EIONMOR MR GUS 85C  
EIONMOR KNIGHT RUBY 96R

SASKVALLEY IMAGINE 65X  
LEVELDALE RUBY 628D  
HFS RUBY 318

BW  
82 lbs.  
WW  
606 lbs.

CED	BW	WW	YW	MK	TM	CEM	YG	CW	REA	FT	MB	SCEZ	SBMI	SF
6	2.1	39	61	24	44	4	0	-8	0.16	-0.09	-0.04	24.22	105.88	46.32

Here is a real moderate, medium framed, stout herd sire. Austin purchased his mother, a moderate easy fleshing female from the Leveldale's sale. She was liked by a few as she was the top seller. We purchased the semen of his sire from Jeff Stangeland a few decades ago. He can attest to the quality there and to the Eionmor bloodlines, the first real beef cattle I had seen since Grandpa's in the 1960's. You have to like this bull for his type and kind. He could be a top herdsire. Take a second look at him.

**OWNED BY STUDER SHORTHORNS**





4

## STUDER'S HEADLINER 7H

4305008 7H 100% SHORTHORN BULL 01.17.2020 ROAN/ POLLED

FREE K-KIM HOT COMMODITY  
CSF EVOLUTION HC  
CF BOY CAROLINE 210 ET

STUDER'S TAYLOR MADE 7Y  
LEVELDALE LASSIE 437B  
LEVELDALE LASSIE 7107T

BW  
84 lbs.  
WW  
638 lbs.

CED	BW	WW	YW	MK	TM	CEM	YG	CW	REA	FT	MB	SCEZ	SBMI	SF
12	1.2	49	75	16	40	8	0	-2	0.53	-0.09	-0.02	40.02	126.33	52.07

It's exciting to see what good genetics can do when put together. CSF Evolution needs no introduction and we crossed him with one of our best Taylor Made daughters. Headliner, by definition, is a star attraction on a program. Wow did it ever work! He made the show string at young age and Brock had fun with him all summer and would rather show him than any heifers next year. He received plenty of second looks in our stalls in OKC as well. However, do not think he's just a show bull, study his performance. What an exciting future herd sire!

OWNED BY STUDER SHORTHORNS



5

## STUDER'S HIGHLANDER 8H

4306506 8H 100% SHORTHORN BULL 01.18.2020 RED/ POLLED

SASKVALLEY QUARTZ 320Y  
STUDER'S CONFERENCE CALL 52C  
MURIDALE JANET 66Z

SASKVALLEY RAMROD 155R  
SASKVALLEY BRENDA 88Z  
SASKVALLEY BRENDA 311S

BW  
87 lbs.  
WW  
602 lbs.

CED	BW	WW	YW	MK	TM	CEM	YG	CW	REA	FT	MB	SCEZ	SBMI	SF
8	1.7	29	51	23	37	5	0	-4	0.11	-0.09	-0.13	29.91	87.14	40.40

A straight Canadian bred that we think has some awesome things about him. Good feet and legs, and as strong topped as any bulls in this offering. The Saskvalley females have produced great quality Seedstock for our operation and I can't say enough positive things about their genetics. When this bull reaches maturity, you will see the time-tested genetics I'm talking about.

OWNED BY STUDER SHORTHORNS



6

## STUDER'S HARD CORE 14H

4306509 14H 100% SHORTHORN BULL 01.25.2020 RED/ POLLED

SASKVALLEY RAMROD 155R  
STUDER'S TAYLOR MADE 7Y  
DSF COUNTRY DANCER 42U

FOXWILLOW SOVEREIGN 3S  
DSF MAY 74Z  
DSF MEG 38W

BW  
91 lbs.  
WW  
718 lbs.

CED	BW	WW	YW	MK	TM	CEM	YG	CW	REA	FT	MB	SCEZ	SBMI	SF
15	1.0	53	81	20	46	9	0	-4	0.42	-0.08	-0.07	47.48	134.80	53.44

The guess work is taken out of this Taylor Made son with a Foxwillow Sovereign dam and an Eionmor Marquis 86G grandam. His dam is one of the best looking, easy keeping cows on the place and is special to me. This guy is a soggy, long bodied, deep ribbed herd sire, with the numbers to back him up as he excels in calving ease and performance with superior value indexes. Herd bull written all over this one!

OWNED BY STUDER SHORTHORNS

## 7 STUDER'S HIGH ROLLER 19H

4306514 19H 100% SHORTHORN BULL 01.31.2020 RED/ POLLED

CROOKED POST STOCKMAN 4Z

LEVELDALE ROCKFORD 838F

EF RED NAN 953

MURIDALE MATT 37Y

MURIDALE SUZETTE 50B

MURIDALE SUZETTE 79X

BW

86 lbs.

WW

692 lbs.

CED	BW	WW	YW	MK	TM	CEM	YG	CW	REA	FT	MB	SCEZ	SBMI	SF
7	2.1	58	88	24	52	4	0	10	0.36	-0.10	-0.03	20.37	123.53	55.74

Our first years' calves out of Leveldale Rockford 838 F are truly performance cattle. Rockford was purchased from Les Mathers bull sale and is a complete outcross for our operation, he brings more growth and power. This bull proves we made the right choice! High Roller is the longest sided of all the bulls of this sale, and extremely correct. We like Rockford's calves so well that we have kept most of his daughters as replacement heifers. Apparently, others like them too as his daughter was top selling heifer in our Family Legacy production sale last Fall. Study the numbers on WW, YW and his indexes.



OWNED BY STUDER SHORTHORNS

## 8 STUDER'S HECKEL 96H

4306542 96H 100% SHORTHORN BULL 02.01.2020 ROAN/ POLLED

SASKVALLEY IMAGINE 65X

SASKVALLEY BANDIT 141B

SASKVALLEY MYRTLE 83N

SCHMIDT'S SOUL TRAIN

DSF BEAUTY 11Z

DSF RED BEAUTY 35P

BW

58 lbs.

WW

576 lbs.

CED	BW	WW	YW	MK	TM	CEM	YG	CW	REA	FT	MB	SCEZ	SBMI	SF
10	1.7	34	55	22	39	6	0	-1	0.29	-0.09	0.01	38.32	104.92	44.77



## 9 STUDER'S JECKEL 97H

4306543 97H 100% SHORTHORN BULL 02.01.2020 ROAN/ POLLED

SASKVALLEY IMAGINE 65X

SASKVALLEY BANDIT 141B

SASKVALLEY MYRTLE 83N

SCHMIDT'S SOUL TRAIN

DSF BEAUTY 11Z

DSF RED BEAUTY 35P

BW

60 lbs.

WW

553 lbs.

CED	BW	WW	YW	MK	TM	CEM	YG	CW	REA	FT	MB	SCEZ	SBMI	SF
10	1.7	34	55	22	39	6	0	-1	0.29	-0.09	0.01	38.32	104.92	44.77

These twin bull calves had a tough start, but looked like they had potential, and get more impressive as they age and that's how they remained bull calves and their phenotype helps you understand why they have been so popular. The names are a family tradition as my dad, Nate Studer, used to call all the twin calves Heckel and Jeckel. Here is to you Dad! The Bandit and Marquis cross has been real good. Thick, smooth, deep roan for a solid pair of bulls. My twin grandsons Caylor and Camdyn along with their cousin Finley have a real attachment to these guys and have added to their gentle deminer.

OWNED BY STUDER SHORTHORNS





# 10 GILMAN'S CAPTAIN 5H

4305313 5H 100% SHORTHORN BULL 02.01.2020 RED/ POLLED  
 LEVELDALE BOARDWALK 530C  
**LEVELDALE COWBOY UP 820F**  
 LEVELDALE CASSANDRA 019X  
 A&T CAPTAIN OBVIOUS 606S  
**GILMAN'S MINNIE 323A**  
 CEG MINNIE 703

BW 87 lbs.  
 WW 688 lbs.

CED	BW	WW	YW	MK	TM	CEM	YG	CW	REA	FT	MB	SCEZ	SBMI	SF
12	0.6	54	82	29	56	7	0	0	0.26	-0.08	0.08	38.29	139.36	55.66

I'm not sure we've raised a bull with a more proven maternal pedigree than 5H. His dam was a Performance Dam this last year. Very well balanced EPD profile ranking 20th percentile or higher in nine categories. Long bodied, deep sided, dark red, homozygous polled bull that just screams "female maker."

**OWNED BY GILMAN SHORTHORNS**



# 11 STUDER'S HIGH TIME 26H

4306516 26H 100% SHORTHORN BULL 02.12.2020 RED/ POLLED  
 SASKVALLEY RAMROD 155R  
**STUDER'S TAYLOR MADE 7Y**  
 DSF COUNTRY DANCER 42U  
 WOLF RIDGE FRONTLINE H28X  
**PVF POLLY 47C**  
 WOLF RIDGE POLLY 142ND

BW 83 lbs.  
 WW 764 lbs.

CED	BW	WW	YW	MK	TM	CEM	YG	CW	REA	FT	MB	SCEZ	SBMI	SF
16	-1.0	49	71	24	48	9	0	-6	0.28	-0.07	-0.04	52.51	139.10	51.69

This strong powerful son of Taylor Made might be the most complete all-around bull for our offering. He was favored by many in our pen bulls at OKC. Taylor Made just does it all, from calving ease to big stout, powerful herd sires. He takes raising Shorthorns to an all-new level. Very few bulls breed as good as they look. The large number of Taylor Made cows in our herd have done much more than we could have dreamed. Top 5 in CED and SBMI. This guy is the example of the type of genetics we hope to be producing for generations to come.

**OWNED BY STUDER SHORTHORNS**



# 12 GILMAN'S REVENUE 7H

4305315 7H 100% SHORTHORN BULL 02.02.2020 ROAN/ POLLED  
 SASKVALLEY BONANZA 219M  
**PVF CREDDENCE 9C**  
 PVF ROSE 25Y  
 ALTA CEDAR DIABLO 98U  
**JSF GOLDEN CHAIN 25C**  
 JSF GOLDEN CHAIN 38A

BW 79 lbs.  
 WW 681 lbs.

CED	BW	WW	YW	MK	TM	CEM	YG	CW	REA	FT	MB	SCEZ	SBMI	SF
12	2.8	49	70	26	51	7	0	-5	0.10	-0.07	0.15	40.41	134.07	53.31

Fancy made, homozygous polled Credence son that had plenty of fans in OKC. I'm not sure you can make one with better feet and joints. Golden Chain x Bonanza-what more real world oriented mating could you ask for in a roan package? We don't get a lot of roan cattle, but this bull ranks right up there in our herd for the last few years.

**OWNED BY GILMAN SHORTHORNS**

# 13 GILMAN'S GRID MASTER 21H ET

4305326 21H 100% SHORTHORN BULL 02.06.2020 RWM/ POLLED

SASKVALLEY TRADITION 106T  
MURIDALE THERMAL ENERGY 15A  
MURIDALE GOOSE 32R

Waukaru Gold Card 5042  
Waukaru Lassie 2024  
Waukaru Lassie 9169

BW  
87 lbs.  
WW  
645 lbs.

CED	BW	WW	YW	MK	TM	CEM	YG	CW	REA	FT	MB	SCEZ	SBMI	SF
12	1.5	62	94	30	61	8	0	18	0.456	-0.08	0.18	34.67	152.84	60.99

No introduction needed on this bull's pedigree, as proven as they come. As a five-year-old, he could be on the cover of the herd bull issue. Big hiped, long bodied, awesome footed and a rock star on paper. Hope Phillip and Luke are proud to see this one come out. Top 1% SBMI, Top 5% WW, YW, MK, ST, CW, SF.

**OWNED BY GILMAN SHORTHORNS**



# 14 GILMAN'S ADVISOR 24H

4306894 24H 100% SHORTHORN BULL 02.08.2020 RWM/ POLLED

DMH Minn Max Leader ET  
DMH Charlotte's Chance  
DMH Cherry Blossom 2901

Gilman's Envied 448B  
Gilman's Minnie 44F  
Gilman's Minnie 323A

BW  
81 lbs.  
WW  
738 lbs.

CED	BW	WW	YW	MK	TM	CEM	YG	CW	REA	FT	MB	SCEZ	SBMI	SF
18	-0.2	50	79	32	56	12	0	0	0.34	-0.07	-0.13	57.92	146.05	51.57

The picture of this bull doesn't do him the justice he deserves. This bull is so massive, bold made and correct. Hands down a top performer in his contemporary this summer coming from one of the best young females we've bred. Notice the Minnie cow family again. Top 5% CED, MK, CEM, SCEZ, SBMI.

**OWNED BY GILMAN SHORTHORNS**



# 15 STUDER'S HONDO 103H

AR4306547 103H 75% SHORTHORNPLUS BULL 02.10.2020 RED/ POLLED

ST Youngblood 64Y  
ST Cheyenne 23C  
ST Betsy 38Y

Jake's Reincarnation 228Y  
JSF Roan Belle 201C  
Simxan Red Baldy

BW  
81 lbs.  
WW  
698 lbs.

CED	BW	WW	YW	MK	TM	CEM	YG	CW	REA	FT	MB	SCEZ	SBMI	SF
12	1.1	51	77	19	44	7	0	4	0.34	-0.08	0.07	41.27	125.36	53.86

This ShorthornPlus bull is a real meat wagon. Loads of muscle and style. He is the kind that will put power in any breed of females you have. His mother is a Jake's Reincarnation which will help to add quality and style. He would work well with many mating in both purebred and commercial setting as he is functional and sustainable in all growth and performance traits. You will find him on sale day!

**OWNED BY STUDER SHORTHORNS**





## 16 GILMAN'S LEVERAGE 27H

4306895 27H 100% SHORTHORN BULL 02.10.2020 RED/ POLLED  
 LEVELDALE BOARDWALK 530C  
**LEVELDALE COWBOY UP 820F**  
 LEVELDALE CASSANDRA 019X  
 SASKVALLEY OUTLAW 173Z  
**JSF MAUDE 219D**  
 JSF MAUDE 59A

BW  
77 lbs.  
 WW  
696 lbs.

CED	BW	WW	YW	MK	TM	CEM	YG	CW	REA	FT	MB	SCEZ	SBMI	SF
15	1.5	66	104	25	58	8	0	5	0.44	-0.09	0.09	45.58	153.28	62.65

Look at his picture, then go to digital beef and you'll see this bull ranks 45th percentile or better in EVERY EPD and \$ Index. I could go on and on about his birth to weaning spread, calving ease and carcass characteristics, but that's easy to judge. No doubt the fanciest made Cowboy Up son to date. His dam landed one of our top bred heifers in the Paint Valley herd last fall.

**OWNED BY GILMAN SHORTHORNS**



## 17 GILMAN'S HEDGE FUND 6H

4305314 6H 100% SHORTHORN BULL 02.02.2020 RED/ POLLED  
 LEVELDALE BOARDWALK 530C  
**LEVELDALE COWBOY UP 820F**  
 LEVELDALE CASSANDRA 019X  
 SASKVALLEY TASK FORCE 105T  
**JDMC LUSTRE 73Y**  
 S LUSTRE'S MARQUIS 3592

BW  
78 lbs.  
 WW  
735 lbs.

CED	BW	WW	YW	MK	TM	CEM	YG	CW	REA	FT	MB	SCEZ	SBMI	SF
17	3.5	78	121	28	67	9	0	15	0.44	-0.07	-0.03	46.16	167.52	66.99

We have never had a bull generate so much interest early before a picture or video was taken. Our Anchor Bull in the Reserve Champion Pen of 3 in OKC that puts together phenotype and genotype incredibly well. I can't wait to see this stud as a mature bull, he's long bodied, soft made, and just has that "look". His dam turns 10 this year and has yet to miss. Hedge Fund genomic tested off the charts in several categories. TOP 1% WW, YW, TM, SBMI, SF all while still being a 16 CED. Unique opportunity here. Retaining in-herd semen use.

**OWNED BY GILMAN SHORTHORNS**



## 18 GILMAN'S BIG BANK 34H

4306900 34H 100% SHORTHORN BULL 02.12.2020 RED/ POLLED  
 LEVELDALE BOARDWALK 530C  
**LEVELDALE COWBOY UP 820F**  
 LEVELDALE CASSANDRA 019X  
 MURIDALE BATEMAN 27A  
**GILMAN'S PENNY 40D**  
 MURIDALE PENNY 75Z

BW  
83 lbs.  
 WW  
742 lbs.

CED	BW	WW	YW	MK	TM	CEM	YG	CW	REA	FT	MB	SCEZ	SBMI	SF
13	1.9	67	97	29	62	7	0	0	0.38	-0.08	0.05	39.08	160.90	61.60

Without a doubt, the Cowboy Up Bull that resembles his sire the most, only with a little added style and hip. Big Bank caught the attention of Alan Sears and several others in OKC, that all commented on his soundness, body structure and scrotal size. He comes from a Performance Dam of the Year whose first 2 progeny were selected by Studer Shorthorns and Paint Valley Farms, (What could be more humbling and concrete evidence of her production?). Top 2% WW, TM, SBMI, SF. We're confident and fully stand behind these bulls. Big. Time. Opportunity. Here. Retaining in-herd semen use.

**OWNED BY GILMAN SHORTHORNS**

# 19 STUDER'S HIGH HEAT 38H

4306518 38H 100% SHORTHORN BULL 02.18.2020 ROAN/ POLLED

SASKVALLEY ULTRA 12J  
**STUDER'S DISTINCT 67D ET**  
 SASKVALLEY MYRTLE 83N

CREEKSIDE SHOCKER 17Y  
**MURIDALE SUE 76A**  
 MURIDALE SUE 83Y

BW  
79 lbs.  
 WW  
548 lbs.

CED	BW	WW	YW	MK	TM	CEM	YG	CW	REA	FT	MB	SCEZ	SBMI	SF
12	0.0	28	45	26	40	6	0	-5	-0.02	-0.08	0.06	45.83	103.54	42.26

Look out we produced a beautiful roan bull here. For decades it has been our goal is to produce deep red Shorthorns. That being said, more roan and color is ahead and this one leads the pack. But the roan color hasn't hampered this one a bit, lots of quality and hair along with the calving ease everyone is looking for. He is straight Saskvalley and Muri breeding- so another quality beef Shorthorn offering right here at Studer Shorthorns. With his looks and his sires' genetics he will be a leading sire for someone for years to come. To date all of Distinct's offspring have been polled. You will like this one!

**OWNED BY STUDER SHORTHORNS**



# 20 STUDER'S HIGH STAKES 41H

4306519 41H 100% SHORTHORN BULL 02.20.2020 R&W/ POLLED

CROOKED POST STOCKMAN 4Z  
**LEVELDALE ROCKFORD 838F**  
 EF RED NAN 953

JSF MARQUIS 127X  
**DSF PARTY GAL 1A**  
 DF PARTY GAL 33X ET

BW  
84 lbs.  
 WW  
729 lbs.

CED	BW	WW	YW	MK	TM	CEM	YG	CW	REA	FT	MB	SCEZ	SBMI	SF
9	2.0	65	96	27	59	5	0	16	0.69	-0.10	-0.12	24.82	145.66	58.42

Another performance son of Rockford. He is big bodied and comes with numbers for back him up. His dam is a female everyone picks out of the pasture. She was one of our first daughters out of JSF Marquis 127Z and goes back to the cow family of Roger Applegate, one of the greatest Shorthorn breeders. The Party Gal cow family is our family favorite. This bull has all the right pieces and numbers to back him up to make his calves your favorite as well. He performs better than any bull in the offering for WW, YW, SBMI, and SF. Don't miss an opportunity to put him to use in going to the next level with your herd.

**OWNED BY STUDER SHORTHORNS**



# 21 STUDER'S HAMMER TIME 43H

4306520 43H 100% SHORTHORN BULL 02.21.2020 RED/ POLLED

CROOKED POST STOCKMAN 4Z  
**LEVELDALE ROCKFORD 838F**  
 EF RED NAN 953

SASKVALLEY TRADITION 106T  
**MURIDALE SONJA 119A**  
 MURIDALE SONJA 31S

BW  
92 lbs.  
 WW  
784 lbs.

CED	BW	WW	YW	MK	TM	CEM	YG	CW	REA	FT	MB	SCEZ	SBMI	SF
6	3.5	62	92	33	64	4	0	14	0.47	-0.10	-0.05	17.66	140.31	57.39

Selling 50% semen interest and full possession.

Hammer Time's mother is donor cow material. 119A has produced Brock's undefeated cow/calf the last two show seasons. She has a three-year-old Bandit daughter that is as impressive as her mother, and a two-year-old Eionmor Marquis 86G son that is becoming a main herd sire for us. This blood line is no accident as the Tradition cattle will be talked about for some time. He was the lead bull for our pen bulls in OKC by a long shot with his flawless phenotype, sound structure, power, and dimension. Study his numbers, off the charts in maternal performance. This bull's future could be masterful, and we are very excited to see his legacy.

**OWNED BY STUDER SHORTHORNS**





22

**STUDER'S HAWK 60H**

4306525 60H 100% SHORTHORN BULL 03.07.2020 RED/ POLLED

SASKVALLEY IMAGINE 65X  
**SASKVALLEY BANDIT 141B**  
 SASKVALLEY MYRTLE 83N  
 SASKVALLEY QUARTZ 320Y  
**DSF VELVET 57B**  
 DSF VELVET 40X

BW  
83 lbs.  
 WW  
662 lbs.

CED	BW	WW	YW	MK	TM	CEM	YG	CW	REA	FT	MB	SCEZ	SBMI	SF
11	0.6	29	54	29	43	7	0	1	0.11	-0.09	0.03	42.46	103.57	42.75

Another offering from the Velvet cow family. These bulls are a sure thing. 60H has an extremely long body, clean underline, smooth front end, tremendous top side with thick hind quarter. These cattle go back to Saskvalley Quartz who had as much top side and hindquarter as any bull we have ever used. Coming from the Velvet cow line this one is a sure thing and warrants paying attention to.

**OWNED BY STUDER SHORTHORNS**



23

**STUDER'S HOME GROWN 36H**

4313102 36H 100% SHORTHORN BULL 02.29.2020 WHITE/ POLLED

SASKVALLEY QUARTZ 320Y  
**STUDER'S CONFERENCE CALL 52C**  
 MURIDALE JANET 66Z  
 STUDER'S JAZZ MAN 10U  
**DSF MATCHLESS 36Y**  
 DSF MATCHLESS 11U

BW  
87 lbs.  
 WW  
--

CED	BW	WW	YW	MK	TM	CEM	YG	CW	REA	FT	MB	SCEZ	SBMI	SF
10	0.8	26	48	23	36	6	0	-6	0.21	-0.09	-0.02	38.88	92.57	40.84

Selling 50% semen interest and full possession.

Were pretty proud of this boy! The term "stud" has been used lots since his earliest days. His length of body, depth of side, and impeccable structure is what come to mind when describing this bull. Homegrown is attractive from every angle and has a great disposition to top it all. Out of a Jazz Man daughter which have been some of Dad's best producing cows and raised some of our top herd sires. If you're in the business to make some pretty blues you'd better check this guy out, no matter which way you breed him he'll still make at least half-bloods. I believe this bull will have many friends come sale day, don't miss out. *Blood work pending for TH, PHA and DS.*

**OWNED BY CHANCE & ASHLEY WILL**



24

**STUDER'S HANK 49H**

4314054 49H 100% SHORTHORN BULL 03.01.2020 ROAN/ POLLED

WESTON TRADEMARK 3RD  
**DMH CHERRY FILLET ET**  
 MAID OF PROMISE H 189TH  
 SASKVALLEY ABLE 64A  
**DSF MINNIE PEARL 40E**  
 DSF MINNIE PEARL 58Z

BW  
78 lbs.  
 WW  
597 lbs.

CED	BW	WW	YW	MK	TM	CEM	YG	CW	REA	FT	MB	SCEZ	SBMI	SF
14	-0.9	29	46	23	38	8	0	-7	0.13	-0.08	-0.12	53.45	107	41.09

Here is another offering for those who like some color in their Shorthorns. Deep sided, smooth fronted and thick, but to top that he has calving ease you are going to love. Top 10 in both CED and BW. Austin and his wife Nicki are doing a great job with their herd selection and this bull is a great example. He is one to check out for sure. A great herd sire for your heifer needs.

**OWNED BY STUDER SHORTHORNS**

~ PAIR OF ET FULL SIBS ~

**25 GILMAN'S STATEMENT 51H ET**

4306924 51H 99% SHORTHORN BULL 03.01.2020 RED/ POLLED

BELMORE JACKAROO Z109  
CROOKED POST STOCKMAN 4Z  
CROOKED POST RED ROSE 4U

EIONMOR MARQUIS 86G  
JSF RUBY 46Y  
RB/SS RUBY 291

BW  
85 lbs.  
WW  
785 lbs.

CED	BW	WW	YW	MK	TM	CEM	YG	CW	REA	FT	MB	SCEZ	SBMI	SF
15	1.3	63	96	30	61	7	0	5	0.47	-0.09	0.12	45.88	157.49	61.11

If I could do things over last fall, this bull would have made the trip to OKC (I know my wife is tired of me telling her that every night after chores the last month.) I love how he has grown and has really excelled in his carcass EPD's. Top 5% WW, YW, MK, SBMI, SF. Most everyone has heard of his maternal brother Envied, now it's time for Statement & Clout to make a name for themselves. Retaining in-herd semen use.

OWNED BY GILMAN SHORTHORNS



**26 GILMAN'S CLOUT 45H ET**

4306912 45H 99% SHORTHORN BULL 02.25.2020 RED/ POLLED

BELMORE JACKAROO Z109  
CROOKED POST STOCKMAN 4Z  
CROOKED POST RED ROSE 4U

EIONMOR MARQUIS 86G  
JSF RUBY 46Y  
RB/SS RUBY 291

BW  
83 lbs.  
WW  
794 lbs.

CED	BW	WW	YW	MK	TM	CEM	YG	CW	REA	FT	MB	SCEZ	SBMI	SF
13	0.7	62	95	30	61	6	0	3	0.36	-0.09	-0.06	40.76	148.30	58.31

Selling 50% semen interest and full possession.

Clout is a large reason for our decision to go show in our first pen show this year. Mid-summer while mowing hay I often found myself day dreaming of him in Denver, not quite the case, but dreams do come true. A maternal sib to Envied. This bull is one of a kind in his density and body mass, all while being built like they should. Boasting a WDA of 3.62 in OKC as our lead bull in the pen. The heaviest Shorthorn Bull we have weaned off, his birth to weaning spread is what we hope to produce more and more of in the future. I am certain there will be cows A'd to him in our herd next year, and would love to work with his new owner on promoting him.

OWNED BY GILMAN SHORTHORNS



**27 GILMAN'S DURHAM 67H**

DR4306938 67H 50% SHORTHORNPLUS BULL 03.08.2020 RED/ POLLED

STUDER'S TPS UNLIMITED 7A  
GILMAN'S PRAIRIE FIRE 580  
SASKVALLEY MYRTLE 81Z

BIEBER H HUGHES W109  
ROUSE SUNFLOWER 46A  
ROUSE SUNFLOWER 31Y

BW  
80 lbs.  
WW  
719 lbs.

CED	BW	WW	YW	MK	TM	CEM	YG	CW	REA	FT	MB	SCEZ	SBMI	SF
10	0.0	49	76	25	50	9	0	1	0.11	-0.02	0.26	34.79	120.01	54.21

Powerful. Soggy. Soft. Beef Bull. Prairie Fire sure stamps his progeny, this stud is just a testament to that. If you like this bull you should see all of his half and 3/4 sibs in the replacement heifer pen. Buy with confidence.

OWNED BY GILMAN SHORTHORNS





28

**STUDER'S HOMER 66H**

4306528 66H 99% SHORTHORN BULL 02.25.2020 RED/ POLLED

SASKVALLEY BANDIT 141B  
 SASKVALLEY MYRTLE 83N

DMH GOLDENDROP 29  
 DMH GOLDENDROP 12

BW  
81 lbs.  
 WW  
684 lbs.

CED	BW	WW	YW	MK	TM	CEM	YG	CW	REA	FT	MB	SCEZ	SBMI	SF
13	-0.1	30	48	24	39	8	0	-2	0.12	-0.08	0.05	48.55	109.29	43.41

Selling 50% semen interest and full possession.

One of my favorite bulls all Summer. His sire, Saskvalley Bandit, is a maternal brother to Tradition and was a sound investment for our operation thanks to Bert Moore. His mother was purchased from Dennis Hoffrogge years back and has been a top producer, giving us four bull calves in a row with lots of quality in each. This investment in your herd will provide you the opportunity to move your Shorthorn herd to the top. He will work well on heifers. Straight Full blood.

**OWNED BY STUDER SHORTHORNS**



29

**STUDER'S HIGH CAPITAL 72H**

4306537 72H 100% SHORTHORN BULL 03.17.2020 RED/ POLLED

STUDER'S UNIVERSAL 10B  
 BYLAND UNIVERSAL BONANZA  
 BYLAND ELLEN 4B12

PVF ROSEWOOD 59D  
 JSF ROSEWOOD 119W

BW  
80 lbs.  
 WW  
725 lbs.

CED	BW	WW	YW	MK	TM	CEM	YG	CW	REA	FT	MB	SCEZ	SBMI	SF
12	-0.7	26	38	26	39	6	0	-5	0.10	-0.09	-0.06	47.83	106.65	39.89

This is our first son out of Byland's Universal Bonanza to sell at auction. We purchased Universal, who is becoming one of our main herd bulls, from Jeff Byers from his online bull sale on Jeff's recommendation, and then purchased his dam from Lee Miller at their auction a year later. Both are some of the best purchases made. This bull needs lots of attention on sale day. He is just that good.

**OWNED BY STUDER SHORTHORNS**



30

**STUDER'S HOMETOWN 78H**

4306538 78H 100% SHORTHORN BULL 03.21.2020 RED/ POLLED

EIONMOR MASTERPIECE 36D  
 EIONMOR MARQUIS 86G  
 EIONMOR CAMELOT RUBY 94T

DSF VELVET 40X  
 GLEN HAVEN MARATHON  
 GLEN HAVEN VELVET 605

BW  
80 lbs.  
 WW  
818 lbs.

CED	BW	WW	YW	MK	TM	CEM	YG	CW	REA	FT	MB	SCEZ	SBMI	SF
14	0.5	57	86	28	57	7	0	2	0.45	-0.07	-0.03	44.29	114.48	55.81

As the years go by I try to filter in some of my old favorite bulls on some of our best cows. This pairing worked to my advantage and produced a bull. I purchased this Velvet cow from a good friend - Glen Haven Shorthorns. We have had 5 daughters of this cow in our herd and 3 sisters to date. Top 10% in CED, WW, and SF. Top 2% in SBMI. If there is a difference between a dream and a vision this bull is a dream come true. Never give up on Marquis 86G.

**OWNED BY STUDER SHORTHORNS**

~ PAIR OF ET FULL SIBS ~

31 **STUDER'S HARD ROCK 80H ET**

4306641 80H 100% SHORTHORN BULL 03.23.2020 RED/ POLLED

SASKVALLEY RAMROD 155R  
STUDER'S TAYLOR MADE 7Y  
DSF COUNTRY DANCER 42U

WAUKARU GOLD CARD 5042  
WAUKARU LASSIE 2024  
WAUKARU LASSIE 9169

BW  
75 lbs.  
WW  
720 lbs.

CED	BW	WW	YW	MK	TM	CEM	YG	CW	REA	FT	MB	SCEZ	SBMI	SF
14	0.4	57	90	24	53	8	0	8	0.41	-0.07	-0.01	43.19	135.89	56.18



32 **STUDER'S HEADSTRONG 85H ET**

4306642 85H 100% SHORTHORN BULL 03.27.2020 RED/ POLLED

SASKVALLEY RAMROD 155R  
STUDER'S TAYLOR MADE 7Y  
DSF COUNTRY DANCER 42U

WAUKARU GOLD CARD 5042  
WAUKARU LASSIE 2024  
WAUKARU LASSIE 9169

BW  
86 lbs.  
WW  
740 lbs.

CED	BW	WW	YW	MK	TM	CEM	YG	CW	REA	FT	MB	SCEZ	SBMI	SF
14	0.3	57	90	25	53	8	-0.31	8	0.41	-0.01	-0.07	43.13	137.70	56.44



Selling 50% Semen Interest and Full Possession on 80H and 85H.

I want to say to the person or persons who envisioned flushing this masterpiece cow to this bull was surely trying to keep the Shorthorn Breed going strong for the future. We are glad to have had the chance to purchase the genetics. This pair of bulls have a real future anyway you look at them. They look like true breeding bulls. Sound, with good feet and legs, strong topped, long bodied power houses. The older they get the better they look. They are curve benders in terms of calving ease through performance and value traits. Study these EPD's and the genetic mating that proves them. These two are a can't miss for anyone trying to keep their breeding programs on the move to the top. Big time herd bulls here. Check them out, you will be as excited as we are.

**OWNED BY STUDER SHORTHORNS**

33 **STUDER'S HIGHWAY BOUNTY 84H**

4306532 84H 100% SHORTHORN BULL 03.26.2020 RED/ POLLED

SASKVALLEY ULTRA 12J  
STUDER'S DISTINCT 67D ET  
SASKVALLEY MYRTLE 83N

SASKVALLEY QUARTZ 320Y  
DSF SUSIE SUE 63C  
MURIDALE SUSIE SUE 14Z

BW  
90 lbs.  
WW  
742 lbs.

CED	BW	WW	YW	MK	TM	CEM	YG	CW	REA	FT	MB	SCEZ	SBMI	SF
11	1.7	36	60	30	48	6	0	2	0.06	-0.09	0.08	39.47	111.27	46.82



Full Blood

A big rugged herd bull candidate here. One of the first Distinct sons to sell to date. You can pick him out for his wide top, heavy bone and big structure. These Canadian cattle have something about their true Shorthorn look as cattle did as I was growing up. I hope some one sees him as the breeding machine that I do. He will be a stand out in, check him over.

**OWNED BY STUDER SHORTHORNS**



# 34 STUDER'S HARMLESS 86H

4306533 86H 100% SHORTHORN BULL 03.27.2020 RED/ POLLED

WESTON TRADEMARK 3RD  
**DMH CHERRY FILLET ET**  
 MAID OF PROMISE H 189TH

**DSF VELVET 115F**  
 STUDER'S CONFERENCE CALL 52C  
 DSF VELVET 40X

BW  
80 lbs.  
 WW  
658 lbs.

CED	BW	WW	YW	MK	TM	CEM	YG	CW	REA	FT	MB	SCEZ	SBMI	SF
13	-0.5	24	40	25	37	6	0	-10	0.12	-0.09	-0.15	50.03	97.99	38.00

An excellent bull for your heifers. This bull with his solid red color has lots of style and class. His mother is a Velvet cow that has always done an excellent job of producing real sound cattle. This is a sound investment with real world genetics to back him up.

**OWNED BY STUDER SHORTHORNS**



# 35 JAG HOT ROD 203H

ASA# 3845791 203H 25% SIM/ .44% ANGUS BULL 01.15.2020 BLACK/ SCUR

TAKE CHARGE  
**WHO MADE WHO 411F 1CM**  
 LSC MISS GLORY 411C

**JAG FLASHETTE 11U**  
 GAMBLES HOT ROD  
 JAG MISS FLASHETTE

BW  
85 lbs.  
 WW  
--

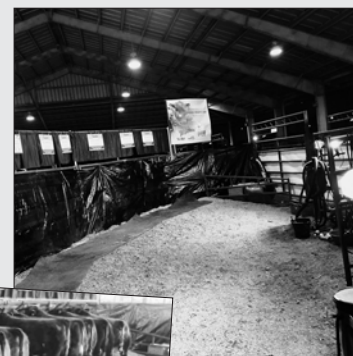
CED	BW	WW	YW	MK	ADG	MCE	STAY	DOC	CW	YG	MARB	BF	REA	API	TI
8.4	0.9	42	60	17	0.11	2.9	2.3	4.8	19.1	-0.22	0.25	-0.05	0.41	79.4	52.4

Interesting how things work out. Found an old straw of semen bred to the best cow on the farm. She can never miss and brings the most dominant bull in the offering. You can go so many ways with this young sire!!

**OWNED BY STUDER SHORTHORNS**



Reserve Champion Pen of Three Bulls,  
 2021 Cattlemen's Congress - Lots 17, 18 and 26



# { SEMEN LOTS }



## 36A

### JSF MARQUIS 127X

4169554 127X 98% SHORTHORN BULL 04.02.2010 RED/POLLED

EIONMOR MARQUIS 86G  
**EIONMOR MASTERPIECE 36D**  
 EIONMOR CAMELOT RUBY 94T

JSF MARVEL 12U  
**JAKE'S PROUD JAZZ 266L**  
 JSF MARVEL S15 ET

CED	BW	WW	YW	MK	TM	CEM	YG	CW	REA	FT	MB	SCEZ	SBMI	SF
12	2.5	69	98	28	62	6	0	13	0.73	-0.11	-0.25	35.91	162.55	59.19

LOT 36A ... Selling 10 units of JSF Marquis 127X semen.  
 LOT 36B ... Selling 10 units of JSF Marquis 127X semen.  
 LOT 36C ... Selling 10 units of JSF Marquis 127X semen.  
 LOT 36D ... Selling 10 units of JSF Marquis 127X semen.

**OWNED BY STUDER SHORTHORNS**

## 37

### SCHMIDT'S SOUL TRAIN

4115309 1S 100% SHORTHORN BULL 03.07.2006 ROAN/POLLED

EIONMOR MARQUIS 86G  
**EIONMOR MASTERPIECE 36D**  
 EIONMOR CAMELOT RUBY 94T

SHERWOOD SUNRISE 423P ET  
**SHERWOODS RED VISION 576M ET**  
 SS REVIVAL

CED	BW	WW	YW	MK	TM	CEM	YG	CW	REA	FT	MB	SCEZ	SBMI	SF
9	4.3	54	87	23	51	0	-1	-9	0.67	-0.09	-0.04	26.36	123.15	54.55

LOT 37 ... Selling 10 units of Schmidt's Soul Train semen.

**OWNED BY STUDER SHORTHORNS**

# { SEMEN LOTS }



**38** **FOXWILLOW SORVEREIGN 3S**  
 4144205 3S 100% SHORTHORN BULL 04.15.2006 RED/ POLLED

MURIDALE BUSTER 14K  
**EIONMORE IDEAL 69F**  
 MURIDALE ROBIN 57G

ST BETSY 81N  
**JT JEFF 44J**  
 POPLAR PARK MISTY BETSY 34A

CED	BW	WW	YW	MK	TM	CEM	YG	CW	REA	FT	MB	SCEZ	SBMI	SF
11	-0.3	38	57	25	44	5	0	-8	0.35	-0.11	-0.01	39.06	120.68	46.60

LOT 38 ... Selling 10 units of Foxwillow Sorvereign 3S semen.

**OWNED BY STUDER SHORTHORNS**



**39** **STUDER'S EASY LIVING 28A**  
 4199252 28A 100% SHORTHORN BULL 03.27.2020 ROAN/ POLLED

ALTA CEDAR LAD 13N  
**ALTA CEDAR ROANLAD 80L**  
 ALTA CEDAR LADY 5L

DSF CINDERELLA 27R  
**EIONMOR MARQUIS 86G**  
 DSF CINDERELLA 40M

CED	BW	WW	YW	MK	TM	CEM	YG	CW	REA	FT	MB	SCEZ	SBMI	SF
11	1.0	30	46	21	36	6	0	-10	0.07	-0.06	-0.10	41.28	96.49	40.84

LOT 39 ... Selling 10 units of Studer's Easy Living 28A semen.

**OWNED BY STUDER SHORTHORNS**



**40** **DMH CHARLOTTE'S CHANCE**  
 4206192 B29 100% SHORTHORN BULL 02.27.2014 RED/ POLLED

DMH MINN MAX LEADER ET  
 CRUACHAN MAX LEADER 551  
 MAID OF PROMISE H 189TH

DMH CERRY BLOSSOM 2901  
**PROMISE A CHIEF 01**  
 CHERRY BLOSSOM H 138TH

CED	BW	WW	YW	MK	TM	CEM	YG	CW	REA	FT	MB	SCEZ	SBMI	SF
20	-3.6	40	62	29	49	12	0	2	0.46	-0.07	-0.08	67.83	142.02	47.43

LOT 40 ... Selling 10 units of DMH Charolette's Chance semen.

**OWNED BY STUDER SHORTHORNS**

# { REFERENCE SIRES }



DMH CHERRY FILLET ET



GILMAN'S REVIVE 28E



GILMANS PRAIRIE FIRE 580



GILMAN'S ENVIED 448B



STUDER'S TAYLOR MADE 7Y



SASKVALLEY BANDIT 141B



LEVELDALE ROCKFORD 838F

## A STUDER'S TAYLOR MADE 7Y

4176051 7Y 100% SHORTHORN BULL 02.01.2011 RED/ POLLED

SASKVALLEY RAMROD 155R MURIDALE MASTER 24M  
SASKVALLEY DARLING 70M  
DSF COUNTRY DANCER 42U SCHMIDT'S SOUL TRAIN  
DSF COUNTRY DANCER 24P

CED	BW	WW	YW	MK	TM	CEM	YG	CW	REA	FT	MB	SCEZ	\$BMI	\$F
17	-0.7	51	76	20	46	10	-0.33	-11	0.28	-0.06	-0.10	56.15	137.18	52.00

## B SASKVALLEY BANDIT 141B

4247458 141B 100% SHORTHORN BULL 05.03.2014 RED/ POLLED

SASKVALLEY IMAGINE 65X SASKVALLEY RAMROD 155R  
SASKVALLEY DAISY 186R  
SASKVALLEY MYRTLE 83N SASKVALLEY ULTRA 12J  
SASKVALLEY MYRTLE 174D

CED	BW	WW	YW	MK	TM	CEM	YG	CW	REA	FT	MB	SCEZ	\$BMI	\$F
12	0.8	26	47	26	39	8	-0.27	4	0.09	-0.09	0.11	44.72	100.85	42.46

## D GILMAN'S REVIVE 28E

4249999 28E 97% SHORTHORN BULL 02.19.2014 ROAN/ POLLED

JAKE'S REINCARNATION 228Y JAKE'S SULTAN OF JAZZ 213S  
JAKE'S TIARA 217T  
JSF GOLD ROSE 107C ET SASKVALLEY TRADITION 106T  
KL GOLD ROSE

CED	BW	WW	YW	MK	TM	CEM	YG	CW	REA	FT	MB	SCEZ	\$BMI	\$F
20	-3.2	33	49	28	45	12	-0.39	-4	0.33	-0.09	0.06	71.27	142.99	45.88

## F GILMAN'S ENVIED 448B

4213175 B448G 99% SHORTHORN BULL 03.28.2014 RED/ POLLED

RS 034 04 421 11 RS DV729 01 034 04  
RS DREAMGIRL 103 04  
JSF RUBY 46Y EIONMOR MARQUIS 86G  
RB/ SS RUBY 291

CED	BW	WW	YW	MK	TM	CEM	YG	CW	REA	FT	MB	SCEZ	\$BMI	\$F
19	-1.3	44	68	31	53	12	-0.18	3	0.20	-0.04	0.22	65.27	144.06	52.48

## C DMH CHERRY FILLET ET

4184918 Z 31 100% SHORTHORN BULL 03.24.2012 RED/ POLLED

WESTON TRADEMARK 3RD TPS CORONET LEADER 21ST  
AUGUSTA PREFERENCE  
MAID OF PROMISE H 189TH CLARA'S MARSHALL 93  
MAID OF PROMISE H 170TH

CED	BW	WW	YW	MK	TM	CEM	YG	CW	REA	FT	MB	SCEZ	\$BMI	\$F
17	-3.1	17	26	23	31	7	-0.34	-14	0.10	-0.09	-0.26	66.48	98.98	33.41

## E GILMAN'S PRAIRIE FIRE 580

4218847 C580G 100% SHORTHORN BULL 05.07.2015 RED/ POLLED

STUDER'S TPS UNLIMITED 7A TPS CORONET MAXIMIZE  
GLEN HAVEN BUTTERFLY 546  
SASKVALLEY MYRTLE 81A JT TRANS X 28X  
SASKVALLEY MYRTLE 132X

CED	BW	WW	YW	MK	TM	CEM	YG	CW	REA	FT	MB	SCEZ	\$BMI	\$F
11	0.7	40	72	21	41	7	-0.38	-16	0.21	-0.08	-0.24	38.09	102.67	45.19

## G LEVELDALE ROCKFORD 838F

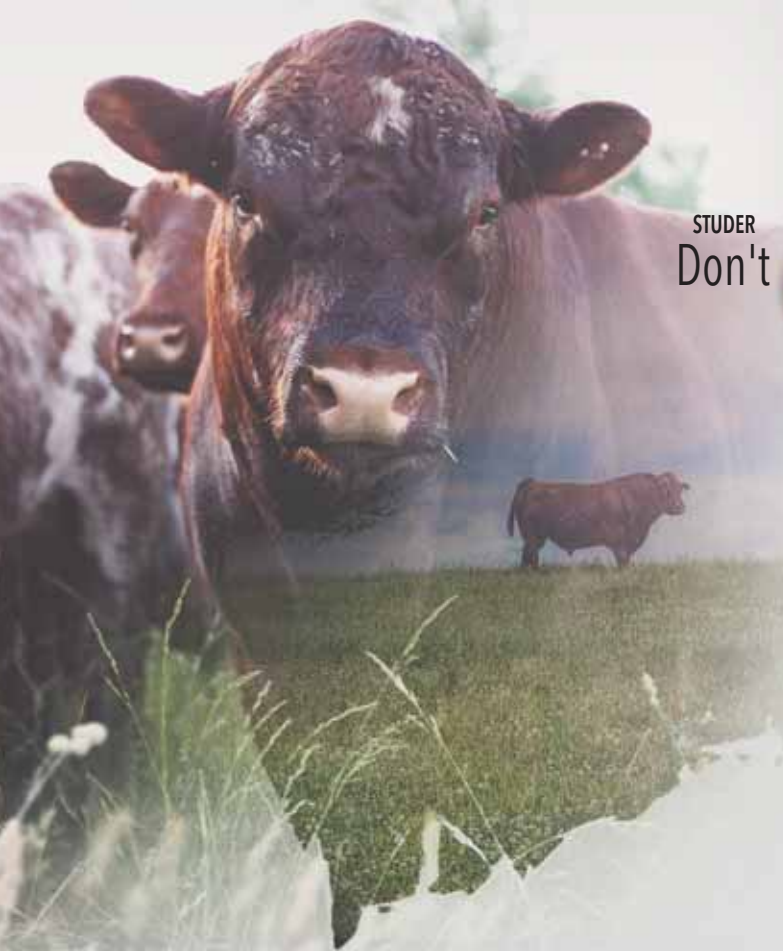
4273365 838F 100% SHORTHORN BULL 02.15.2018 RWM/ POLLED

CROOKED POST STOCKMAN 4Z BELBELMORE JACKAROO Z109  
CROOKED POST RED ROSE 4U  
EF RED NAN 953 RS DV 034 322 09  
EF RED NAN 819

CED	BW	WW	YW	MK	TM	CEM	YG	CW	REA	FT	MB	SCEZ	\$BMI	\$F
6	2.6	72	109	31	67	4	-0.43	26	0.71	-0.11	-0.14	11.63	147.28	61.66

STUDER SHORTHORNS  
3014 130th Street  
Creston, IA 50801

FIRST CLASS  
PRE-SORTED  
PAID  
Montezuma, Iowa  
Permit No. 30



STUDER  
Don't

You Think It's Time  
BULL SALE



**SATURDAY,  
FEBRUARY 27, 2021**  
WCC LIVESTOCK AUCTION, ANITA, IOWA