

Prairie View Farms

APRIL 9, 2021

11TH ANNUAL SALE

Friday night at 6:30 p.m. | at the farm | Gridley, Illinois



FOCUS
Kyla Fawcett



Prairie View Farms Annual SPRING PRODUCTION SALE

Friday Night, April 9, 2021

6:30 p.m. | at the farm | Gridley, Illinois
Or watch Live on CCI.Live

10 Years of Spring Success:

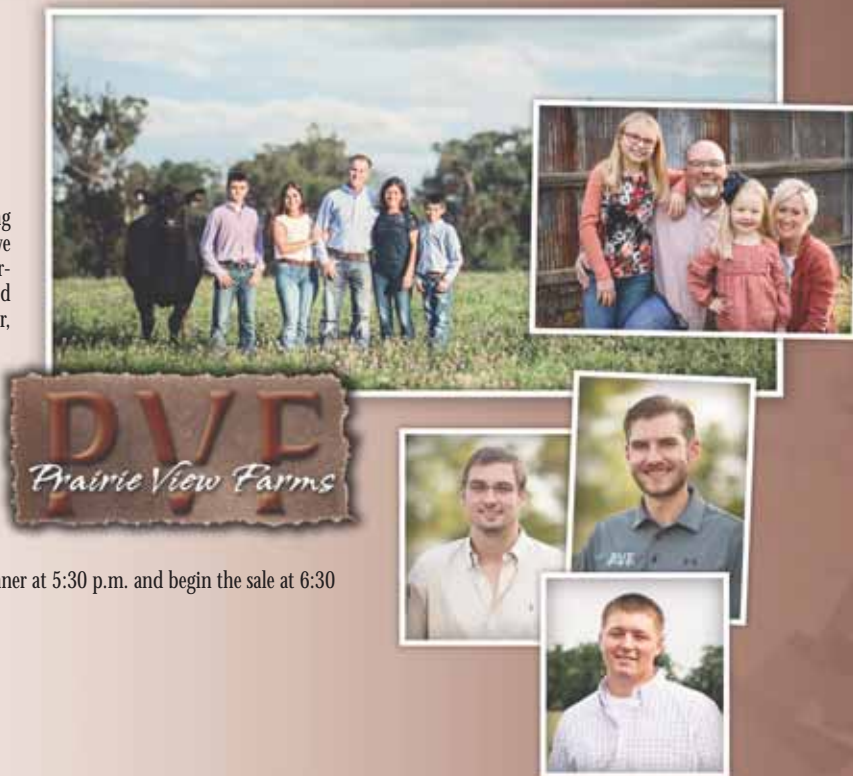
We've hosted a Spring Production Sale for more than 10 years and looking back on the cattle that we've placed with juniors from around the country, we can't help but be humbled. We've had some amazing success, but more importantly, we've built a family with the purchasers of these cattle, as we travel around the country with them to compete. After all that has happened in the last year, we know that we aren't taking that opportunity for granted anymore.

We want to formally welcome you to the farm on Friday night, April 9, 2021 to participate in our sale. If it's more convenient, our friends at CCI.Live will again provide an online format if that fits your schedule or comfort. We welcome you to come view our cattle at any time before our sale Friday evening, April 9th.

This select group of 32 show heifers, and 11 bulls are as excellent a set from our most current genetic matings we have offered to date. We are excited for you to see them and participate in our PVF program.

If you have any questions, please call any of us at any time! We will have dinner at 5:30 p.m. and begin the sale at 6:30 p.m.

- Alan & Theresa - Brandon & Cathy



SALE DAY DETAILS

AUCTIONEER ... Cody Lowderman, 309.833.5543

RINGMEN

Casey Jentz608.234.1998	Bruce Bradley417.848.3457
Shane Ryan309.391.7490	

SALE DAY PHONES

Alan Miller217.840.6935	Brandon Jones309.370.1081
Theresa Miller217.649.1990	Cathy Jones309.258.1266
Rance Long918.510.3464	Kyle Chrislaw608.751.9640
Curtis Harsh740.272.0339	Drew Gilbert309.433.4402

HOTEL ACCOMMODATIONS

Holiday Inn & Suites Bloomington Airport.....309.662.4700
3202 E. Empire Street, Bloomington, IL 61704 ** Ask for the Prairie View Farms block for \$105/night.

DIRECTIONS TO THE SALE ... From Gridley, IL and Route 24 go 2.8 miles north on Center St.
Address: 10788 N 250 East Rd., Gridley, IL 61744

INTERNET COVERAGE ... The sale will be covered live by CCI.Live. Register for a bid number to bid online at www.cci.live or through www.pvfangus.com. If you have questions registering to bid, contact CCI.Live's Whitney Andras at 405.714.7929 or 516.366.0734.



SALE MANAGEMENT ...

RANCE LONG, Inc. | 918.510.3464 cell
rlong@rancelong.com | www.rancelong.com



HERD HEALTH ... All cattle selling will be accompanied by proper health certificates for immediate shipment.

TRUCKING ARRANGEMENTS ... We are glad to assist you with trucking arrangements on your purchases.

TERMS & CONDITIONS ... Cattle sell under the Terms & Conditions as recommended by the American Angus Association.

EMBRYOS INTEREST ... PVF will be retaining 1/2 embryo interest on heifers - Lots 1, 2, 3, 4, 5, 7, 8, 11, 12, 14 and 16 selling in this offering. Contact Alan for more details.

AIRPORT ... 1 hour and 45 minutes to Chicago Midway (MDW); 30 minutes to Bloomington, Illinois (BMI); & 50 minutes to Peoria, Illinois (PIA). Contact Alan or Theresa for any help with travel arrangements.

SALE FORMAT ... A video will play of each Lot as the sale happens. The heifers and cows will all be available for viewing outside of the sale barn and will not be coming into the sale ring during the auction.

INSURANCE ... Available through James F Bessler Inc., Livestock Mortality Insurance, 815.762.2641.



2020

PVF Missie 9214



2019

PVF Proven Queen 8256



2018

PVF Proven Queen 7254

10 YEARS of Success

We are so excited to bring you another set of fall born heifer calves from Prairie View Farms. As we look back on 10 years of this sale, we want you to celebrate the success from a purchase in our sale!



2017

PVF Blackcap 6313



2016

PVF Missie 5216

MISSIE

Cow Family



Lot 1

PVF MISSIE 0140

[cow +*19989702] [calved: 09.03.2020]

	BEPD	WEPD	YEPD	MILK	SC
EPDs	+2.1	+48	+77	+20	+164

PVF THE NATURAL 7042

PVF INSIGHT 0129
 PVF BLACKBIRD 3127
 C&C PRIORITY 1428B EXAR
 PVF MISSIE 0084

PVF MISSIE 4149

Lot 1

Combining one of our most exciting new sires with the Missie Cow Family has produced a big-time contender. 4149 was the National Junior Heifer Show Grand Champion Female and was also Reserve Grand Heifer at Denver. Her production record will prove to be as prolific as her show career as she has already produced numerous champions including PVF Missie 8246, Champion Senior Yearling at the 2020 National Junior Angus Show for Ashton Dillow.

Retaining 1/2 embryo interest.



PVF MISSIE 4149, dam of Lots 1, 2 & 3.



PVF MISSIE 4149, dam of Lots 1, 2 & 3.



PVF MISSIE 4149, dam of Lots 1, 2 & 3.

3 EMBRYOS

Selling one package of three SEXED IVF HEIFER embryos - SIRE OF CHOICE.

- PVF THE NATURAL 7042 X PVF MISSIE 4149
- KR CASINO 6243 X PVF MISSIE 4149
- SCC SCH 24 KARAT 838 X PVF MISSIE 4149

Lot 1A

MISSIE

Cow Family



Lot 2



PVF THE NATURAL,
SIRE OF LOTS 1, 2 & 3.



Lot 3



PVF MISSIE 8246,
MATERNAL SISTER TO LOTS 1, 2 & 3.

Lot 2

PVF MISSIE 0142

[cow +*19989703] [calved: 09.05.2020]

	BEPD	WEPD	YEPD	MILK	SC
EPDs	+3.7	+59	+97	+23	+199

Lot 3

PVF MISSIE 0145

[cow +*19989704] [calved: 09.08.2020]

	BEPD	WEPD	YEPD	MILK	SC
EPDs	+4.2	+58	+102	+16	+178

- PVF THE NATURAL 7042
- PVF MISSIE 4149

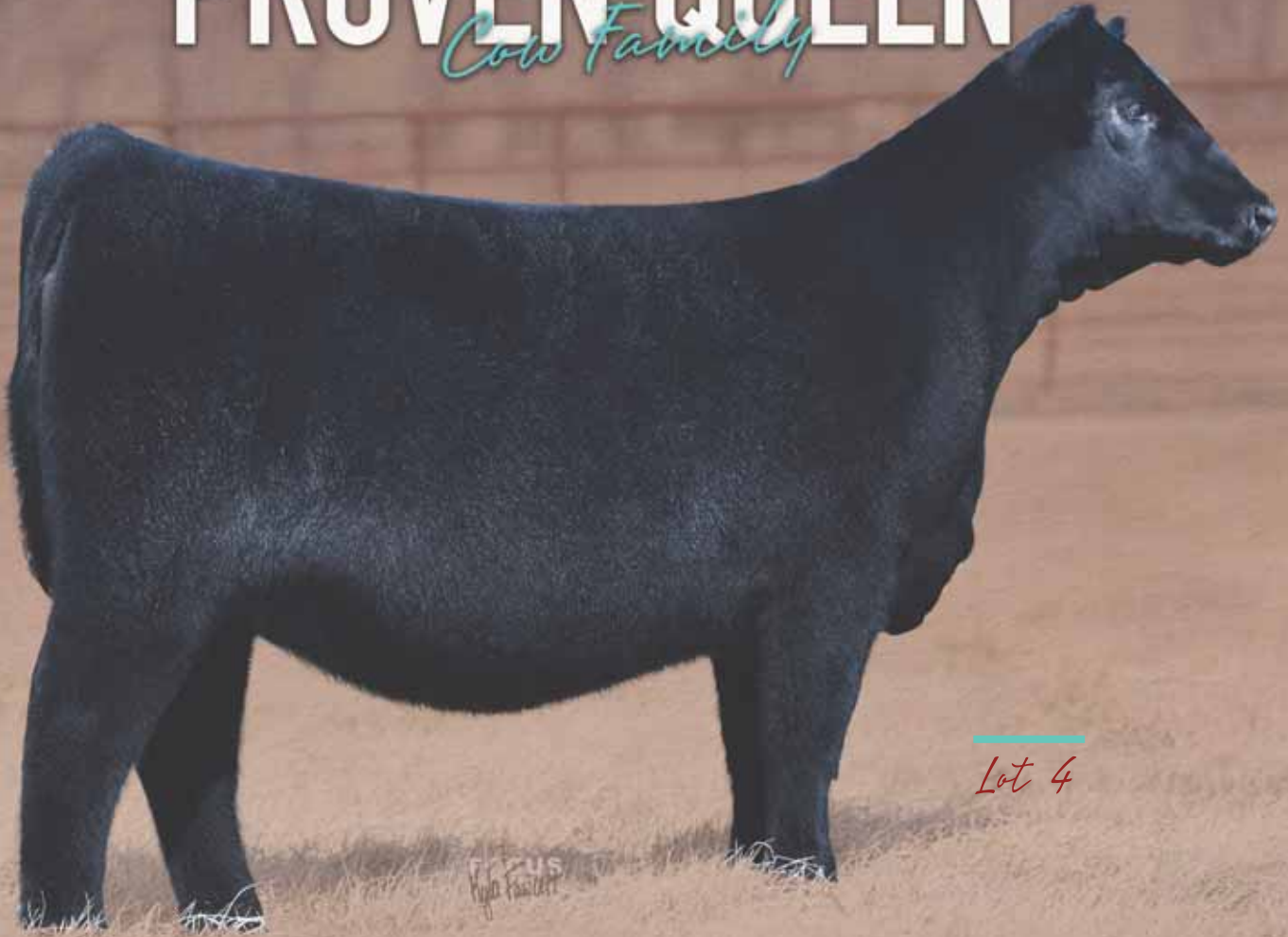
- PVF INSIGHT 0129
- PVF BLACKBIRD 3127
- C&C PRIORITY 1428B EXAR
- PVF MISSIE 0084

The Missie Cow Family has produced frequent visits to the backdrop the last few years and these two heifers are sure to follow in that legacy. Their dam, PVF Missie 4149, past NJAS Grand Champion and NWSS Reserve Grand Champion has produced many champions including Lot 1 of the 2019 PVF Spring Production Sale that went on to be a popular 2020 NJAS Division Champion for Ashton Dillow. The now deceased PVF The Natural 7042 proved himself in his limited first calf crop to be an up-and-coming sire of champions. With extremely limited semen availability his genetics will be valuable for years to come.

Retaining 1/2 embryo interest on Lots 2 & 3.

PROVEN QUEEN

Cow Family



Lot 4

lot 4 PVF PROVEN QUEEN 0105

[cow +*19977974] [calved: 05.28.2020]

	BEPD	WEPD	YEPD	MILK	SC
EPDs	+3.2	+63	+110	+29	+225

WB PENDLETON 708 PVF SWSN
PVF PROVEN QUEEN 4032

DAMERON BEST IN CLASS
WB PVF SF LUCY 4033
PVF INSIGHT 0129
PVF PROVEN QUEEN 2106

PVF PROVEN QUEEN 4032,
DAM OF LOT 4



Leading off the summer division with this powerful May heifer sired by the past National Western Stock Show Grand Champion Bull, WB Pendleton 708 PVF SWSN, whose first calf crop included the Grand Champion Female of the 2021 Cattlemen's Congress. The dam of this heifer has produced many champions including the 2017 National Junior Angus Show Grand Champion Bull, PVF TCF Frozen 6078. The extra power, performance and look of this heifer is sure to make her a favorite every time out.

Retaining 1/2 embryo interest on Lot 4.

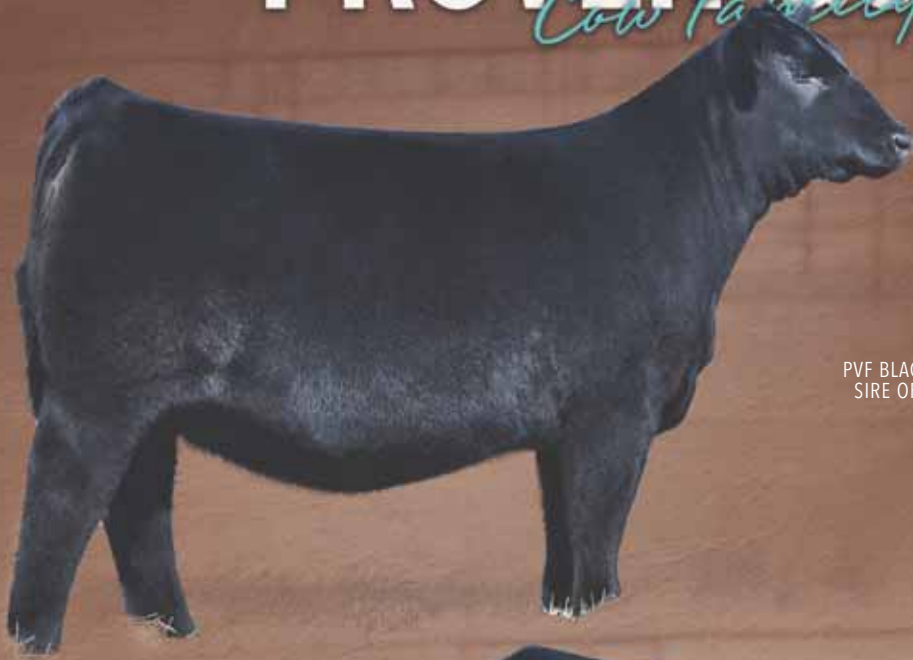
lot 4A 3 EMBRYOS

Selling one package of three SEXED IVF HEIFER embryos - SIRE OF CHOICE.

PVF MARVEL 9185 X PVF PROVEN QUEEN 4032
PVF REDDINGTON 9186 X PVF PROVEN QUEEN 4032
PVF SURVEILLANCE 4129 X PVF PROVEN QUEEN 4032

PROVEN QUEEN

Cow Family



Lot 5



PVF BLACKLIST 7077,
SIRE OF LOTS 5 & 6.



Lot 6

Lot **5**

PVF PROVEN QUEEN 0106

[cow +*19890216] [calved: 06.03.2020]

	BEPD	WEPD	YEPD	MILK	SC
EPDs	+4.7	+66	+104	+19	+234

Lot **6**

PVF PROVEN QUEEN 0107

[cow +*19890217] [calved: 06.05.2020]

	BEPD	WEPD	YEPD	MILK	SC
EPDs	+6.3	+81	+138	+22	+249

- PVF BLACKLIST 7077
- PVF PROVEN QUEEN 4032

- PVF INSIGHT 0129
- PVF BLACKBIRD 3070
- PVF INSIGHT 0129
- PVF PROVEN QUEEN 2106

Headlining the June division are two flush mate sisters from the ST Genetics Sire PVF Blacklist 7077 and one of our most powerful Proven Queen donors. These females descend from the same Proven Queen cow line that has produced most of Amelia's champion Bred and Owned Females, as well as the popular sire PVF TCF Frozen 6078. 0106 offers as much power as any female in this offering with a look that is sure to grab any judge's attention, while 0107 offers unmatched length and front-end extension in a super stout package.

Retaining 1/2 embryo interest on Lot 5.

MISSIE

Community



Lot 7



PVF MISSIE 6228,
DAM OF LOTS 7 - 10.



Lot 8



PVF MISSIE 9214,
MATERNAL SIB TO LOTS 7 - 10.

Lot 7

PVF MISSIE 0122

[cow +*19995994] [calved: 07.14.2020]

	BEPD	WEPD	YEPD	MILK	SC
EPDs	+5.0	+58	+99	+30	+167

Lot 8

PVF MISSIE 0123

[cow +*19995995] [calved: 07.19.2020]

	BEPD	WEPD	YEPD	MILK	SC
EPDs	+2.2	+51	+86	+27	+170

KR CASINO 6243

PVF MISSIE 6228

CFCC BLACK JACK 001
MALSONS SAVANNAH 27Y
C&C PRIORITY 1428B EXAR
PVF MISSIE 790

Three big time contenders in the July division, produced by the popular outcross power sire, KR Casino 6243, whose dam is a many time champion maternal sister to Insight. 6228 is a past National Western Stock Show Reserve Grand Female for Olivia Caldwell who has proven herself in the donor pen for the PVF and Genflo Programs with two division winners at this year's National Junior Angus Show alone.

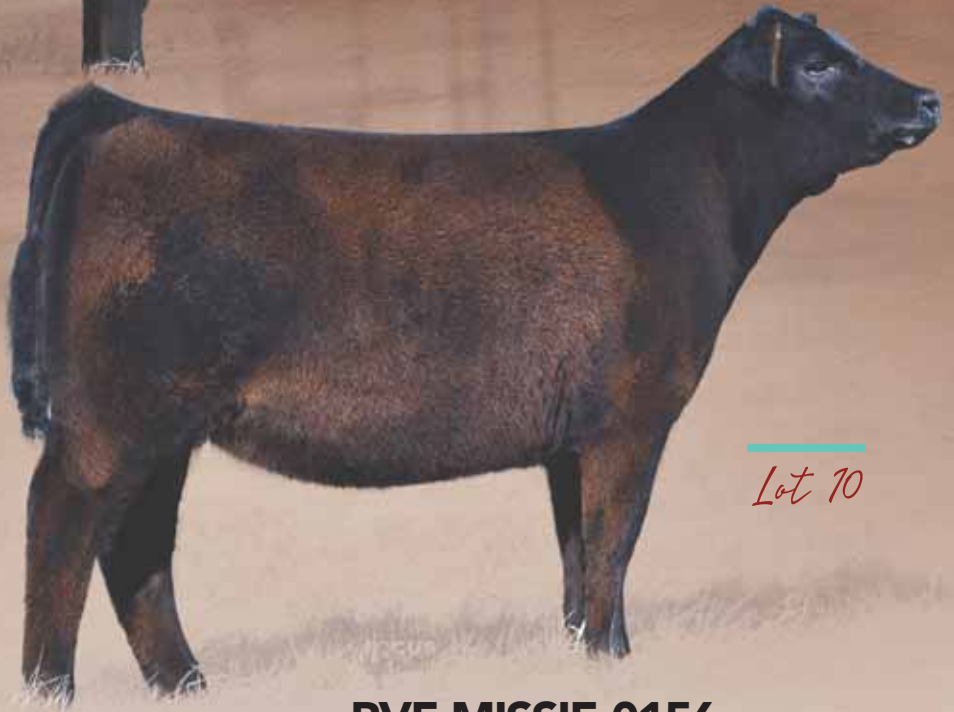
Retaining 1/2 embryo interest on Lot 7 & 8.

MISSIE

Cow Family



Lot 9



Lot 10

Lot 9

PVF MISSIE 0125

[cow +*19995996] [calved: 07.27.2020]

	BEPD	WEPD	YEPD	MILK	SC
EPDs	+3.5	+53	+88	+30	+165

- KR CASINO 6243
- PVF MISSIE 6228

CFCC BLACK JACK 001
MALSONS SAVANNAH 27Y
C&C PRIORITY 1428B EXAR
PVF MISSIE 790

Lot 10

PVF MISSIE 0156

[cow *19989710] [calved: 10.01.2020]

	BEPD	WEPD	YEPD	MILK	SC
EPDs	+1.3	+40	+75	+27	+151

- TGM COMPTON 1738
- PVF MISSIE 6228

SILVEIRAS STYLE 9303
DAMERON NORTHERN MISS 3198
C&C PRIORITY 1428B EXAR
PVF MISSIE 790

Lot 9A

3 EMBRYOS

Selling one package of three SEXED IVF Heifer embryos.

KR CASINO 6243 X PVF MISSIE 6228

PVF Missie 0156 is a super attractive Compton daughter of the powerful young PVF Missie 6228 donor cow. Her early production accomplishments include PVF Missie 9214, a \$45,000 purchase as Lot 1 in our 2020 Spring Sale and National Junior Angus Show Late Summer Champion for Cassidy Barker as well as the Genflo Missie 819, the early Summer Division Champion at the 2020 National Junior Angus Show. Combining Style with a full sister to First Class, Compton combines some of the most potent show ring genetics in the Angus breed.

BLACKBIRD

Cow Family



Lot 11



PVF BLACKLIST 7077,
A MATERNAL SIB TO
LOTS 11 & 12.



Lot 12



PVF BLACKBIRD 3070,
DAM OF LOTS 11 & 12.

Lot 11 **PVF BLACKBIRD 0166**
[cow +*19989712] [calved: 10.01.2020]

	BEPD	WEPD	YEPD	MILK	SC
EPDs	+5.3	+75	+129	+37	+227

Lot 12 **PVF BLACKBIRD 0168**
[cow +*19989714] [calved: 10.13.2020]

	BEPD	WEPD	YEPD	MILK	SC
EPDs	+5.2	+70	+122	+22	+243

{ PVF INSIGHT 0129
 PVF BLACKBIRD 3070

S A V BRILLIANCE 8077
 PVF MISSIE 790
 DAMERON FIRST CLASS
 ALL PVF BLACKBIRD 645

Combining WB Pendleton 708 PVF SWSN with the dam of Blacklist provides all the best of the most current PVF genetics. PVF Blackbird 3070 is a full sister to the past North American International Livestock Exposition and Fort Worth Stock Show Grand Champion Female, PVF Blackbird 3071, and is a direct daughter of the foundation Blackbird 645 cow. Pendleton was the 2019 National Western Stock Show Grand Champion Bull whose first calf crop included numerous National Junior Angus Show division winners, and the Grand Champion Female of the 2021 Cattlemen's Congress.

Retaining 1/2 embryo interest on Lots 11 & 12.

Lot 12A **3 EMBRYOS**
Selling one package of three IVF embryos. Choice of SEXED HEIFER or Unsexed.

PVF INSIGHT 0129 X PVF BLACKBIRD 3070

BLACKBIRD

Cow Family

lot **13**

PVF BLACKBIRD 0141

[cow *19989705] [calved: 09.03.2020]

	BEPD	WEPD	YEPD	MILK	SC
EPDs	+2.5	+65	+108	+13	+187

PVF BLACKLIST 7077

PVF BLACKBIRD 3127

PVF INSIGHT 0129
PVF BLACKBIRD 3070
PVF WINDFALL SCC 9005
ALL PVF BLACKBIRD 645

Best known as the dam of PVF The Natural 7042, 3127 has also produced many show ring champions including the \$35,000 feature of the Fall 2020 PVF Production Sale, PVF Blackbird 0213, who went on to be Reserve Supreme Female at the recent U of I Winter Warm Up for Lauryn Mool. Mated to Blacklist, this pedigree offers two doses of the legendary Blackbird 645 cow, who was also the Grand Dam of the \$300,000 UDE Blackbird, Reserve Grand Champion of the 2021 Cattlemen's Congress.



PVF BLACKBIRD 3127,
DAM OF LOT 13.

3 EMBRYOS

Selling one package of three SEXED IVF HEIFER embryos - SIRE OF CHOICE.

PVF INSIGHT 0129 X PVF BLACKBIRD 3127

PVF BLACKLIST 7077 X PVF BLACKBIRD 3127

SILVEIRAS STYLE 9303 X PVF BLACKBIRD 3127

lot **13A**

lot **14**

PVF BLACKBIRD 0137

[cow *19989701] [calved: 09.02.2020]

	BEPD	WEPD	YEPD	MILK	SC
EPDs	+3.7	+57	+99	+28	+185

TGM COMPTON 1738

PVF BLACKBIRD 7296

SILVEIRAS STYLE 9303
DAMERON NORTHERN MISS 3198
PVF WB HALO 5177
PVF BLACKBIRD 5255

Combining the look and power of the Blackbird cow family with the ultimate show ring genetics of Compton provides the genetic tools for a sure-to-be champion. 0137 has become a favorite for the look and quality she possesses with a junior friendly attitude.

Retaining 1/2 embryo interest.



PVF BLACKBIRD 7296,
DAM OF LOT 14.

lot **15**

PVF BLACKBIRD 0154

[cow 19992747] [calved: 09.23.2020]

	BEPD	WEPD	YEPD	MILK	SC
EPDs	+4.0	+49	+74	+19	+142

GATEWAY FOLLOW ME F163

PVF BLACKBIRD 4098

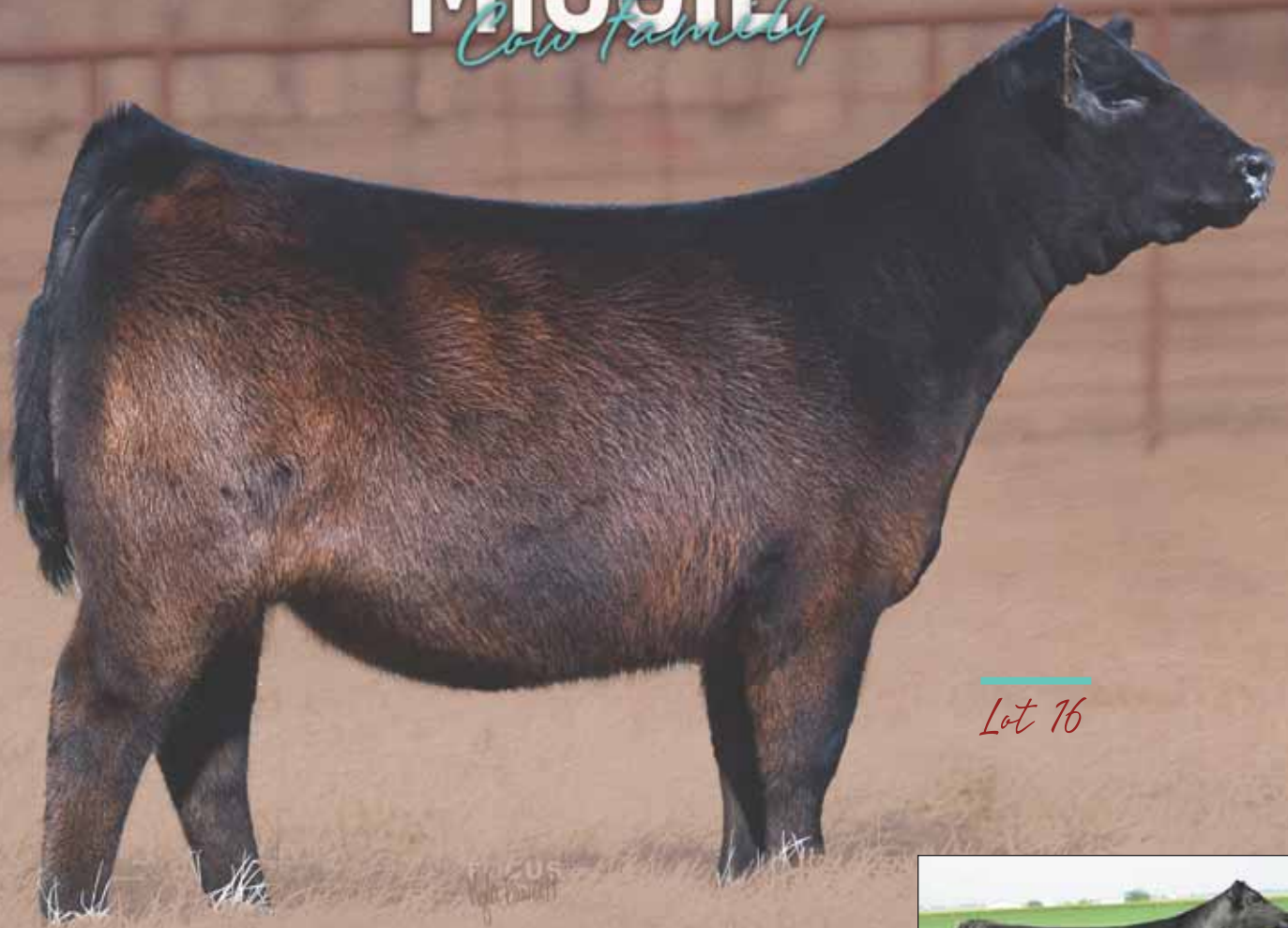
C&C MCKINLEY 3000 EXAR
DUNK-W MAXINE HR 505C
SAV BRILLIANCE 8077
PVF BLACKBIRD 201

Combining the best of the past and the present, one of the first daughters of Follow Me is produced by a maternal sister to the legendary Blackbird 645. This female offers loads of rib shape, mass and power in a striking package.



MISSIE

Cow Family



Lot 16

PVF MISSIE 0157

[cow +*19992748] [calved: 10.03.2020]

Lot 16

S&R ROUNDTABLE J328
PVF MISSIE 0084

	BEPD	WEPD	YEPD	MILK	SC
EPDs	+2.2	+57	+96	+22	+225
	PLAINVIEW LUTTON E102				
	PVF PROVEN QUEEN 786				
	SAV BISMARCK 5682				
	PVF MISSIE 790				

The only daughter to sell this spring of the legendary PVF Missie 0084, this female's show ring outlook may only be exceeded by her donor potential. 0084, a maternal sister to Insight, has produced more champions and sale toppers than any female in the history of Prairie View Farms, including the \$95,000 lead off heifer at our 2020 Fall Production Sale, PVF Missie 0227.

Retaining 1/2 embryo interest.

PVF MISSIE 0084,
DAM OF LOT 16.



PVF MISSIE 4149,
MATERNAL SISTER
TO LOT 16.



PVF MISSIE 5216,
MATERNAL SISTER TO LOT 16.



MISSIE

Cow Family



Lot 17



PVF MISSIE 6298,
DAM OF LOT 17.



PVF MISSIE 6311,
DAM OF LOT 18.



Lot 18

Lot **17**

PVF MISSIE 0138

[cow +*19992725] [calved: 09.02.2020]

	BEPD	WEPD	YEPD	MILK	SC
EPDs	+4.2	+53	+94	+18	+189

SILVEIRAS STYLE 9303

PVF MISSIE 6298

GAMBLES HOT ROD
SILVEIRAS ELBA 2520
C&C PRIORITY 1428B EXAR
PVF MISSIE 0084

Lot **18**

PVF MISSIE 0165

[cow +*19989711] [calved: 10.08.2020]

	BEPD	WEPD	YEPD	MILK	SC
EPDs	+4.8	+58	+88	+18	+172

PVF INAUGURATION 6174

PVF MISSIE 6311

DAMERON FIRST CLASS
PVF MISSIE 790
PVF SURVEILLANCE 4129
PVF MISSIE 0084

Produced by a full sister to the past National Junior Angus Show Grand Champion, PVF Missie 4149, PVF Missie 6298 is a top selling female of a past PVF Production Sale and among her many accomplishments was named Third Overall at the Oklahoma Youth Expo for Victoria Gerken. Her initial embryo production proves she will be a force to reckon with in the years to come.

A beautifully designed daughter of the Genex sire PVF Inauguration 6174. The dam of this female is one of the greatest daughters of PVF Surveillance 4129, who was a past Atlantic National Division Champion and was selected Supreme at the Iowa Angus Preview Show for Korey Moser. This powerful PVF and K&J Angus donor is a direct daughter of PVF Missie 0084, the all-time high-income producing cow in the history of PVF.

PRINCESS

Cow Family



Lot 19



Lot 20



T/R NFF PRINCESS E307,
MATERNAL SISTER
TO LOTS 19 & 20.

Lot **19**

PVF PRINCESS 0126

[cow +*19992708] [calved: 08.02.2020]

	BEPD	WEPD	YEPD	MILK	SC
EPDs	+4.5	+68	+109	+19	+219

Lot **20**

PVF PRINCESS 0127

[cow +*19992710] [calved: 08.04.2020]

	BEPD	WEPD	YEPD	MILK	SC
EPDs	+4.8	+58	+98	+19	+142

LAZY JB EDGE 8745
EXAR PRINCESS 8063

EXAR CLASSEN 1422B
DPL SANDY 3040
PVF INSIGHT 0129
GREENS PRINCESS 1012

Combining the best of the Princess and Sandy cow families, this mating of the dam of the 2019 National Western Stock Show Grand Champion Female to the \$160,000 many time champion, Lazy JB Edge, offers unique genetics to the PVF program. These two August heifers have the style and eye appeal to compete at any level.

Lot **20A**

3 SEXED IVF HEIFER EMBRYOS

Selling one package of three SEXED IVF HEIFER embryos.

PVF MARVEL 9185 X EXAR PRINCESS 8063

BLACKCAP

Cow Family



Lot 21



PVF INAUGURATION
6174, SIRE OF
LOTS 21 & 22



Lot 22



PVF BLACKCAP 6313,
MATERNAL SISTER TO
LOTS 21 & 22.

lot **21** **PVF BLACKCAP 0124**
[cow +*19989700] [calved: 07.25.2020]

	BEPD	WEPD	YEPD	MILK	SC
EPDs	+4.4	+60	+105	+30	+208

lot **22** **PVF BLACKCAP 0148**
[cow +*19989707] [calved: 09.11.2020]

	BEPD	WEPD	YEPD	MILK	SC
EPDs	+3.7	+60	+99	+25	+189

PVF INAUGURATION 6174
MC BLACKCAP 3057

DAMERON FIRST CLASS
PVF MISSIE 790
SAV FIRST CLASS 0207
MC BLACKCAP 7067

These descendants of the Blackcap cow family are maternal sibs to the 4th Overall Female of the 2018 National Junior Angus Show for Brynn Bullerman. These daughters of Inauguration show extra size, power and stoutness of hip. Their dam was added to the PVF Donor Pen to begin a new family and has not disappointed as she produces many farm favorites year in and year out.

PROVEN QUEEN

Cow Family



Lot 23



PVF PROVEN QUEEN 5250, DAM OF LOTS 23 & 24



Lot 24



PVF PROVEN QUEEN 8256, FULL SIB TO LOT 24

Lot 23 **PVF PROVEN QUEEN 0153**

[cow +19995997] [calved: 09.20.2020]

	BEPD	WEPD	YEPD	MILK	SC
EPDs	+4.8	+55	+95	+19	+168

- KR CASINO 6243
- PVF PROVEN QUEEN 5250

CFCC BLACK JACK 001
MALSONS SAVANNAH 27Y
C&C MCKINLEY 3000 EXAR
PROVEN QUEEN 2108

Lot 24 **PVF PROVEN QUEEN 0167**

[cow +*19989713] [calved: 10.11.2020]

	BEPD	WEPD	YEPD	MILK	SC
EPDs	+2.7	+68	+113	+16	+224

- PVF INSIGHT 0129
- PVF PROVEN QUEEN 5250

SAV BRILLIANCE 8077
PVF MISSIE 790
C&C MCKINLEY 3000 EXAR
PVF PROVEN QUEEN 2108

Sired by Casino, this heifer's dam, PVF Proven Queen 5250, was a many time champion for Korey Moser, including a division win at the National Junior Angus Show and Reserve Grand Champion at the Atlantic National Junior Show, and has continued her success as an elite producer of champions both for PVF and the K&J Angus Programs.

Featuring a full sister to PVF Proven Queen 8256, a past PVF Production Sale feature who went on to be the Reserve Champion of the North American International Livestock Exposition. This female is overwhelming in her body mass and dimension and combines that with a beautifully balanced look.

PROVEN QUEEN

Cow Family



Lot 25



Lot 26

lot 25 PVF PROVEN QUEEN 0143

[cow 19992757] [calved: 09.05.2020]

EPDs	+2.4	+61	+108	+29	+207
BEPD					
WEPD					
YEPD					
MILK					
SC					

BUSHES WING MAN 201
PVF PROVEN QUEEN 5206

BUSHES DATE NIGHT62
BUSHES LADY SOUTHSIDE 6703
PVF INSIGHT 0129
PVF PROVEN QUEEN 2106

lot 26 PVF PROVEN QUEEN 0146

[cow 19989706] [calved: 09.10.2020]

EPDs	+2.4	+41	+70	+21	+190
BEPD					
WEPD					
YEPD					
MILK					
SC					

PVF BLACKLIST 7077
PVF PROVEN QUEEN 3118

PVF INSIGHT 0129
PVF BLACKBIRD 3070
DAMERON PVF RAPTOR 702
DAMERON PVF PROVEN QUEEN010

Produced by a powerful full sib to the dam of Lots 4-6 in this catalog, 0143 is a perfectly balanced show heifer project with the power and performance to make an elite cow after her show career is over. Bush's Wingman combines calving ease genetics with an elite phenotype.

Stacking Blackbird 3070 and Proven Queen 010 combines two of the stoutest, most powerful females to ever graze at PVF. This heifer combines that power with the look to catch any judge's eye. Blacklist continues to impress for his ability to breed stoutness in an eye appealing package.

LUCY

Cow Family



lot 27 PVF LUCY 0150

[cow +19989709] [calved: 09.15.2020]

BEPD	WEPD	YEPD	MILK	SC
EPDs	+4.2	+60	+106	+24 +224

PVF BLACKLIST 7077

WB PVF LUCY 1052

PVF INSIGHT 0129
 PVF BLACKBIRD 3070
 PVF WINDFALL SCC 9005
 THOMAS LUCY 7360

Produced from the past National Western Stock Show Reserve Grand Champion Female, WB PVF Lucy 1052. The Lucy cow family has produced numerous champions for the PVF and Ward Brothers programs including the National Western Stock Show Grand Champion Bull, Pendleton. Combined with Blacklist, this female combines balance and power with a potent pedigree to offer an exciting future.



WB PVF LUCY 1052,
 DAM OF LOT 27.



lot 28 PVF DLX LUCY 0121

[cow 19989715] [calved: 07.12.2020]

BEPD	WEPD	YEPD	MILK	SC
EPDs	+2.3	+65	+113	+29 +245

SCHIEFELBEIN WARRANTY 797

PVF LUCY 8144

PLATTEMERE WEIGH UP K360
 FROSTY ELBA LIZZY 4115
 PVF INSIGHT 0129
 PVF LUCY 4189

Produced by the Genex sire and Schiefelbein sale feature, Warranty, this heifer combines his calving ease genetics and elite genotype with the power and style of the Lucy cow family. 4189 is a past National Junior Angus Show Division Champion who has produced PVF Lucy 8225, the many time champion for Katelyn Eathington as well as the lead off bull of this sale offering.



PVF LUCY 8225,
 MATERNAL SIB TO THE DAM OF LOT 28



lot 29 PVF DLX LUCY 0163

[cow 20002199] [calved: 10.06.2020]

BEPD	WEPD	YEPD	MILK	SC
SIRE	+3.2	+50	+76	+17 +156
DAM	+2.7	+54	+101	+23 +219

PVF SURVEILLANCE 4129

DLX PVF LUCY 6262

B C LOOKOUT 7024
 PVF ELLEN 9100
 PVF INSIGHT 0129
 PVF LUCY 4189

Surveillance daughters continue to win at all levels of competition but more importantly are proving themselves in the pasture as outstanding young cows with near perfect udders. Combining Surveillance with this Insight daughter of the Lucy cow family, this female combines some of our most proven maternal genetics.



PVF SURVEILLANCE 4129,
 SIRE OF LOT 29.

MAY

Heifers

30 PVF ESTER 0101

[cow 19813373] [calved: 05.20.2020]

	BEPD	WEPD	YEPD	MILK	SC
EPDs	+0.3	+34	+51	+21	+152

- PVF INSIGHT 7248
- THOMAS ESTER 2102

PVF INSIGHT 0129
 PVF BLACKBIRD 3070
 CONNEALY IMPRESSION
 THOMAS ESTER 7622

This daughter of a full brother to PVF Blacklist 7077 was produced by our pick of the females at a past Thomas Ranch Sale. This female is smooth and balanced from end to end from a proven maternal cow family that will add value after her show career.



31 PVF PROVEN QUEEN 0102

[cow *19891454] [calved: 05.20.2020]

	BEPD	WEPD	YEPD	MILK	SC
EPDs	+2.4	+46	+71	+30	+131

- TGM COMPTON 1738
- HOTZ PROVEN QUEEN 1328

SILVEIRAS STYLE 9303
 DAMERON NORTHERN MISS 3198
 DAMERON FIRST CLASS
 DAMERON PVF PROVEN QUEEN010

Combining First Class with a Proven Queen 010 donor, 1328 exemplified the dominant power of the Proven Queen cow family. Combined with the elite show ring genetics of Compton, this heifer has the look to compete and the tools to produce for the long run.



32 PVF MISSIE 0104

[cow *19813374] [calved: 05.24.2020]

	BEPD	WEPD	YEPD	MILK	SC
EPDs	+4.0	+59	+98	+27	+203

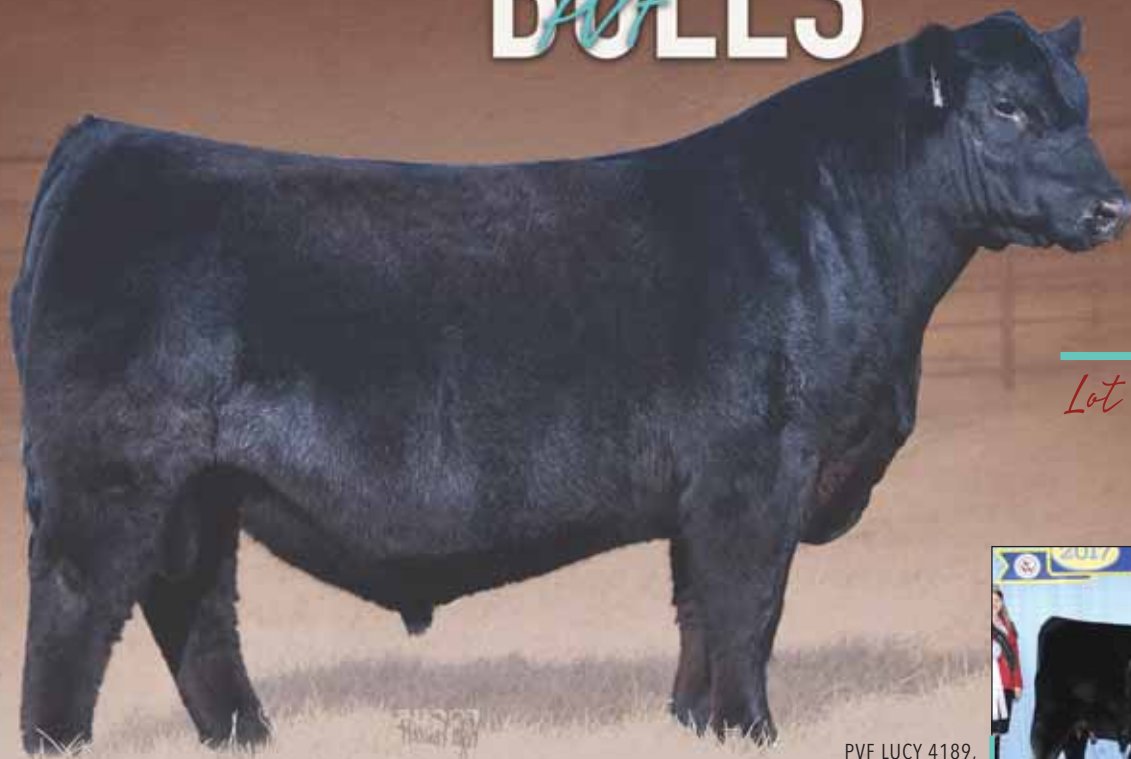
- TGM COMPTON 1738
- PVF MISSIE 2058

SILVEIRAS STYLE 9303
 DAMERON NORTHERN MISS 3198
 PVF INSIGHT 0129
 PVF MISS RAPTOR 024

The dam of this female, PVF Missie 2058 is a maternal sister to Insight, 0084, and many PVF legends. Carrying on the Missie family tradition, 0104 has an elite show ring look that will pass on for generations to come.



BULLS



Lot 33

PVF KING PIN 0058

[bull *19812047] [calved: 03.09.2020]

EPDs	CED	BEFD	WEPD	YEPD	MILK	SB	SC
+7	+3.0	+58	+105	+15	+132	+221	

PVF BLACKLIST 7077

PVF LUCY 4189

PVF INSIGHT 0129
 PVF BLACKBIRD 3070
 C&C PRIORITY 1428B EXAR
 THOMAS LUCY 7360

Leading off our bull offering with a true standout, King Pin offers all the tools to have a huge impact on the Angus Breed. He is a massively constructed, up-headed, proud individual who is outstanding on his feet and legs. Sired by Blacklist, the dam from the Lucy cow family is a past NJAS Division Champion who has proven in the donor pen to send extra power and stoutness. Included in her many production accomplishments is PVF Lucy 8225, whose many championships include Division wins at the National Junior Angus Show and National Western Stock Show. Retaining 1/3 semen revenue sharing interest.

PVF LUCY 4189,
DAM OF LOT 33



PVF BLACKLIST 7077,
SIRE OF LOT 33 AND
FULL BROTHER TO LOT 34.



PVF MOST WANTED 0015

[bull +*19810837] [calved: 01.31.2020]

EPDs	CED	BEFD	WEPD	YEPD	MILK	SB	SC
+5	+1.6	+60	+100	+21	+98	+168	

PVF INSIGHT 0129

PVF BLACKBIRD 3070

S A V BRILLIANCE 8077
 PVF MISSIE 790
 DAMERON FIRST CLASS
 ALL PVF BLACKBIRD 645

PVF Most Wanted 0015 is a full brother to the ST sire, PVF Blacklist 7077. He combines a more moderate birthweight genotype than his famous full brother with tremendous style and structural integrity. His sire, the renowned PVF Insight 0129 needs no introduction, and his dam is one of the most powerful producers from the Blackbird family that has produced grand champions at every major Angus show in America.

Retaining 1/3 semen revenue sharing interest.

BULLS

Lot 35

PVF BLACKLIST 0008

[bull 19810830] [calved: 01.28.2020]

PVF BLACKLIST 7077

EA BLACKCLASS 3201

EPDs	CED	BEPD	WEPD	YEPD	MILK	SB	SC
	+14	+0.1	+43	+84	+26	+113	+188
	PVF INSIGHT 0129						
	PVF BLACKBIRD 3070						
	BOY COWBOY 908						
	EA BLACKCLASS 8805						

PVF Blacklist 0008 uniquely combines the power of Blacklist with breed leading calving ease genetics. Selected as a featured heifer calf from the Ellingson Angus program in North Dakota, the dam of 0008 offers the impeccable maternal genetics of the Blackclass cow family.



Lot 36

PVF BLACKLIST 0020

[bull *19810839] [calved: 02.03.2020]

PVF BLACKLIST 7077

PVF MISSIE 0053

EPDs	CED	BEPD	WEPD	YEPD	MILK	SB	SC
	-1	+3.9	+61	+109	+19	+143	+218
	PVF INSIGHT 0129						
	PVF BLACKBIRD 3070						
	OSU CURRENCY 8173						
	PVF MISS RAPTOR 024						

A standout since birth, 0020 combines the muscle shape, bone and power of Blacklist with the style and eye appeal of the Missie cow family. His dam, PVF Missie 0053, a foundation donor, was a maternal sister to the dam of PVF Insight 0129 and produced the 2014 National Western Stock Show Reserve Grand Female.



PVF MISSIE 2018,
MATERNAL SIB TO LOT 36



Lot 37

PVF BLACKLIST 0040

[bull *19879826][calved: 02.26.2020]

PVF BLACKLIST 7077

PVF PROVEN QUEEN 4032

EPDs	CED	BEPD	WEPD	YEPD	MILK	SB	SC
	+3	+3.8	+59	+106	+18	+135	+212
	PVF INSIGHT 0129						
	PVF BLACKBIRD 3070						
	PVF INSIGHT 0129						
	PVF PROVEN QUEEN 2106						

Line bred to Insight, this powerful herd sire prospect packs the Missie, Blackbird and Proven Queen cow families into one potent pedigree. His dam also produced the 2017 National Junior Angus Show Grand Champion Bull, PVF TCF Frozen 6078.



PVF PROVEN QUEEN 4032,
DAM OF LOT 37



BULLS



38 **PVF PENDLETON 0002**
 [bull *19810826] [calved: 01.22.2020]

EPDs	CED	BEPD	WEPD	YEPD	MILK	SB	SC
	+10	+0.8	+42	+78	+22	+109	+185

DAMERON BEST IN CLASS
 WB PENDLETON 708 PVF SWSN
 WB PVF SF LUCY 4033
 PVF INSIGHT 0129
 PVF MISSIE 0053
 PVF MISSIE 3031

A son of the National Western Stock Show Grand Champion Pendleton, 0002 combines modest birth weights with a nicely balanced look. His dam is an extra stout Insight daughter who traces back to the Missie cow family.



39 **PVF WING MAN 0042**
 [bull *19883149] [calved: 03.02.2020]

EPDs	CED	BEPD	WEPD	YEPD	MILK	SB	SC
	+6	+2.4	+63	+107	+28	+121	+211

BUSHES DATE NIGHT 62
 BUSHES LADY SOUTHSIDE 6703
 PVF INSIGHT 0129
 DAMERON PVF PROVEN QUEEN 010
 BUSHES WING MAN 201
 PVF PROVEN QUEEN 4109

Combining the calving ease genetics of Wingman with the maternal power of the Proven Queen cow family, 0042 combines the best of both worlds. His dam, PVF Proven Queen 4109, is one of many elite females from the mating of Insight to the foundation Proven Queen 010 donor.



40 **PVF WING MAN 0036**
 [bull 19818400] [calved: 02.25.2020]

EPDs	CED	BEPD	WEPD	YEPD	MILK	SB	SC
	+14	-0.3	+60	+106	+30	+127	+225

BUSHES DATE NIGHT 62
 BUSHES LADY SOUTHSIDE 6703
 CONNEALY UNTED 059
 MOHNEN JILT 1814
 BUSHES WING MAN 201
 MOHNEN JILT 3597

Sleep all night calving ease in this son of Wingman whose dam is from the famous Jilt cow family developed in the Mohnen herd in South Dakota. He offers extra length and muscle shape with his calving ease genetics.

BULLS

Lot 41

PVF COMPTON 0031

[bull 19810846] [calved: 02.20.2020]

	EPDs	CED	BEPD	WEPD	YEPD	MILK	SB	SC
	+2	+1.4	+58	+107	+31	+127	+199	
TGM COMPTON 1738	SILVEIRAS STYLE 9303							
PVF PROVEN QUEEN 4092	DAMERON NORTHERN MISS 3198							
	PVF INSIGHT 0129							
	DAMERON PVF PROVEN QUEEN 010							

Add eye appeal with modest birth weights and powerful growth in this son of Compton produced by a powerful Proven Queen donor dam. 0031 has been one of the most eye catching calves since he was born, and his genomic profile indicates he can cover a lot of bases.



Lot 42

PVF TURNING POINT 0026

[bull *19810843] [calved: 02.08.2020]

	EPDs	CED	BEPD	WEPD	YEPD	MILK	SB	SC
	+15	-0.7	+57	+97	+21	+125	+217	
STEVENSON TURNING POINT	PLATTEMERE WEIGH UP K360							
PVF MISSIE 8113	STEVENSON PRIDE I167X							
	DAMERON BEST IN CLASS							
	PVF MISSIE 4070							

Sure to be one of the most popular on sale night, 0026 combines breed leading calving ease with an elite look. This son of the calving ease specialist Stevenson Turning Point traces to a granddam who is a full sister to Insight.



Lot 43

PVF TURNING POINT 0004

[bull +*19810827] [calved: 01.24.2020]

	EPDs	CED	BEPD	WEPD	YEPD	MILK	SB	SC
	+12	-0.3	+56	+86	+20	+101	+190	
STEVENSON TURNING POINT	PLATTEMERE WEIGH UP K360							
PVF PROVEN QUEEN 5087	STEVENSON PRIDE I167X							
	DAMERON FIRST CLASS							
	FCF SCC PVF PROVEN QUEEN 615							

Ranking in the top 10 percent of the Angus breed for calving ease, this powerful Turning Point son was produced by a many time champion Proven Queen featured donor for the Blue Drifter and PVF Programs.



Prairie View Farms
10788 N. 250 E. Road
Gridley, IL 61744

