



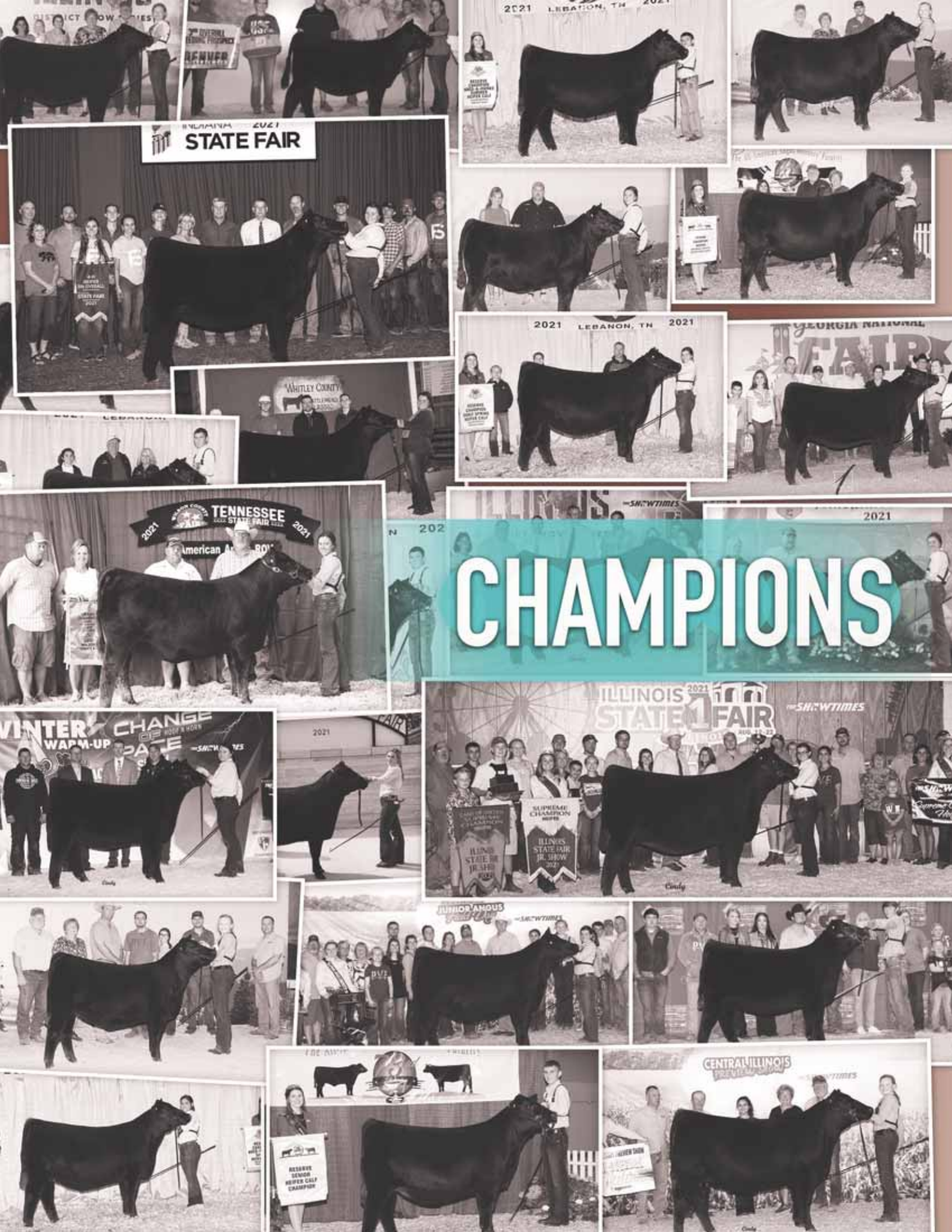
FALL PRODUCTION SALE

Second Annual

Friday Night, October 1, 2021

6:30 p.m. | at the farm | Gridley, Illinois | Or watch Live on CCI.Live





2021 STATE FAIR

2021 LEBANON, TN 2021

2021 TENNESSEE STATE FAIR 2021

2021

CHAMPIONS

ILLINOIS STATE FAIR 2021

WINTER CHANGE WARM-UP DATE

JUNIOR ANNUUS

CENTRAL ILLINOIS

RESERVE SENIOR HEIFER CALF CHAMPION

RESERVE SENIOR HEIFER CALF CHAMPION



BUILDING ON OUR SUCCESS

We are excited to again offer the first opportunity to purchase PVF spring-born females in our Fall Production Sale Friday Night, October 1, at the farm in Gridley Illinois. This select group of more than 40 show heifers and 20 bred heifers are an example not only of the tried and true PVF genetics many of you have come to know, but showcase the newest herd sires and young donors that represent our future. We have been honored to see so many of our customers bringing home banners at all levels of competition this year, but even more so, we are encouraged to see how PVF genetics have gone from previous show ring successes to raising Angus-breed-impacting sires and dams that prove again and again a purchase of a PVF heifer is not just a show ring project, but a forever investment. As you study the genetics of the 62 lots in this sale, you will notice nearly 70% of the animals in the two generation pedigree carry the PVF prefix.

Again this year, our crew has been a crucial part of our success, and we thank Kyle, Curtis, and Drew, and our family for their continued dedication to making a sale happen this fall.

We know that many of you have much to balance, so we welcome and encourage you to come to the farm anytime before and during the evening of October 1st, but we will also again offer the opportunity for you to participate using CCI.Live's easy to use platform.

If you have any questions, please call any of us at any time! We will offer supper at 5:30 p.m. and begin the sale at 6:30 p.m.

- Alan & Theresa - Brandon & Cathy

ALAN & THERESA MILLER, 217.840.6935 | pvfangus@gmail.com
 BRANDON & CATHY JONES, 309.370.1081
 KYLE CHRISLAW, 608.751.9640 | CURTIS HARSH, 740.272.0339
 DREW GILBERT, 309.433.4402



Second Annual FALL PRODUCTION SALE

Friday Night, October 1, 2021

6:30 p.m. | at the farm | Gridley, Illinois | Or watch Live on CCI.Live

SALE DAY DETAILS

AUCTIONEER/ RINGMEN

Cody Lowderman,.....309.833.5543	Casey Jentz608.234.1998
Shane Ryan309.391.7490	Bruce Bradley417.848.3457

SALE DAY PHONES

Alan Miller217.840.6935	Brandon Jones309.370.1081
Theresa Miller217.649.1990	Cathy Jones309.258.1266
Rance Long918.510.3464	Kyle Chrislaw608.751.9640
Curtis Harsh740.272.0339	Drew Gilbert309.433.4402

HOTEL ACCOMMODATIONS

HOTEL HEADQUARTERS

Hampton Inn Pontiac, IL815.844.4400
 2000 Grand Prix Drive, Pontiac, IL **Ask for the PVF block to receive a special rate.

DIRECTIONS TO THE SALE ... From Gridley, IL and Route 24 go 2.8 miles north on Center St.
 Address: 10788 N 250 East Rd., Gridley, IL 61744

INTERNET COVERAGE ... The sale will be covered live by CCI.Live. Register for a bid number to bid online at www.cci.live or through www.pvfangus.com. If you have questions registering to bid, contact CCI.Live's Whitney Andras at 405.714.7929 or 516.366.0734.

SALE MANAGEMENT ...

RANCE LONG, Inc. | 918.510.3464 cell
 rlong@rancelong.com | www.rancelong.com



HERD HEALTH ... All cattle selling will be accompanied by proper health certificates for immediate shipment.

TRUCKING ARRANGEMENTS ... We are glad to assist you with trucking arrangements on your purchases.

TERMS & CONDITIONS ... Cattle sell under the Terms & Conditions as recommended by the American Angus Association.

EMBRYOS INTEREST ... PVF will be retaining 1/2 embryo interest on heifers - Lots 1, 2, 3, 4, 5, 6, 8, 10, 11, 16, 17, 18, 19, 20, 21 & 24 selling in this offering. Contact Alan for more details.

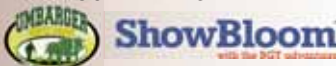
AIRPORT ... 1 hour and 45 minutes to Chicago Midway (MDW); 30 minutes to Bloomington, Illinois (BMI); & 50 minutes to Peoria, Illinois (PIA). Contact Alan or Theresa for any help with travel arrangements.

SALE FORMAT ... A video will play of each Lot as the sale happens. The heifers and cows will all be available for viewing outside of the sale barn and will not be coming into the sale ring during the auction.

INSURANCE ... Available through James F Bessler Inc., Livestock Mortality Insurance, 815.762.2641.

PHOTOS & VIDEOS current as of September 14th. **EPD VALUES** current as of September 10th.

PVF PROUDLY FEEDS



LUCY

Family



Lot 1
●●●



PVF Kingpin 0058, maternal brother to Lot 1.



PVF Lucy 4189, dam of Lot 1.



PVF Lucy 8225, maternal sister to Lot 1.

Lot 1 PVF LUCY 1031

[cow 20120791] [calved: 02.26.2021]

- PVF MARVEL 9185
- PVF LUCY 4189

	BEPD	WEPD	YEPD	MILK	SC
EPDs	+2.8	+49	+90	+25	+225
PVF BLACKLIST 7077					
PVF MISSIE 5245					
C&C PRIORITY 1428B EXAR					
THOMAS LUCY 7360					

Leading off with a truly elite show heifer and donor prospect, Lot 1 has the look to grab everyone's attention and the cow power behind her to have an impact long after her show career. PVF Lucy 4189 has surfaced as one of the most consistent producers of power in the PVF donor lineup. She produced the lead off feature of the 2021 Spring Production Sale, PVF Kingpin 0058, owned with ABS, Talon Crest, Haerr Farms, Oakley Farms and Appalachian Angus. PVF Lucy 4189 herself is a past NJAS Division Champion who also produced PVF Lucy 8225, a division winner at the National Junior Angus Show and National Western Stock Show for Katelyn Eathington.

Retaining half embryo interest.

LUCY *Family*



Lot 2
●●●



WB PVF Lucy 1052, dam of Lot 2.



WB Pendleton 708 PVF SWSN, from the Lucy cow family, Pendleton's dam is a maternal sister to Lot 2.

Lot 2 **PVF LUCY 1056**
[cow 20120804] [calved: 04.02.2021]

- PVF MARVEL 9185
- WB PVF LUCY 1052

	BEPD	WEPD	YEPD	MILK	SC
EPDs	+3.2	+54	+100	+28	-
PVF BLACKLIST 7077					
PVF MISSIE 5245					
PVF WINDFALL SCC 9005					
THOMAS LUCY 7360					

A direct daughter of the past National Western Stock Show Reserve Grand Champion Female, WB PVF Lucy 1052 for Cameron Ward, this female has the power and the look to carry on the winning ways of the Lucy cow family. Beyond the show ring, this female's power-packed pedigree adds value to her future as a donor. She is a maternal sister of the dam of the National Western Stock Show Grand Champion Bull, WB Pendleton 708 PVF SWSN, as well as being a maternal sister to the dam of Lot 1. Retaining half embryo interest.

MISSIE

Family



Lot 3
●●●



PVF Marvel 9185, sire of Lot 3.



PVF Missie 4149, dam of Lot 3.



PVF Missie 0140, this \$160,000 maternal sister sold in our 2021 PVF Spring Production Sale.

Lot 3 PVF MISSIE 1055

[cow 20120803] [calved: 03.27.2021]

- PVF MARVEL 9185
- PVF MISSIE 4149

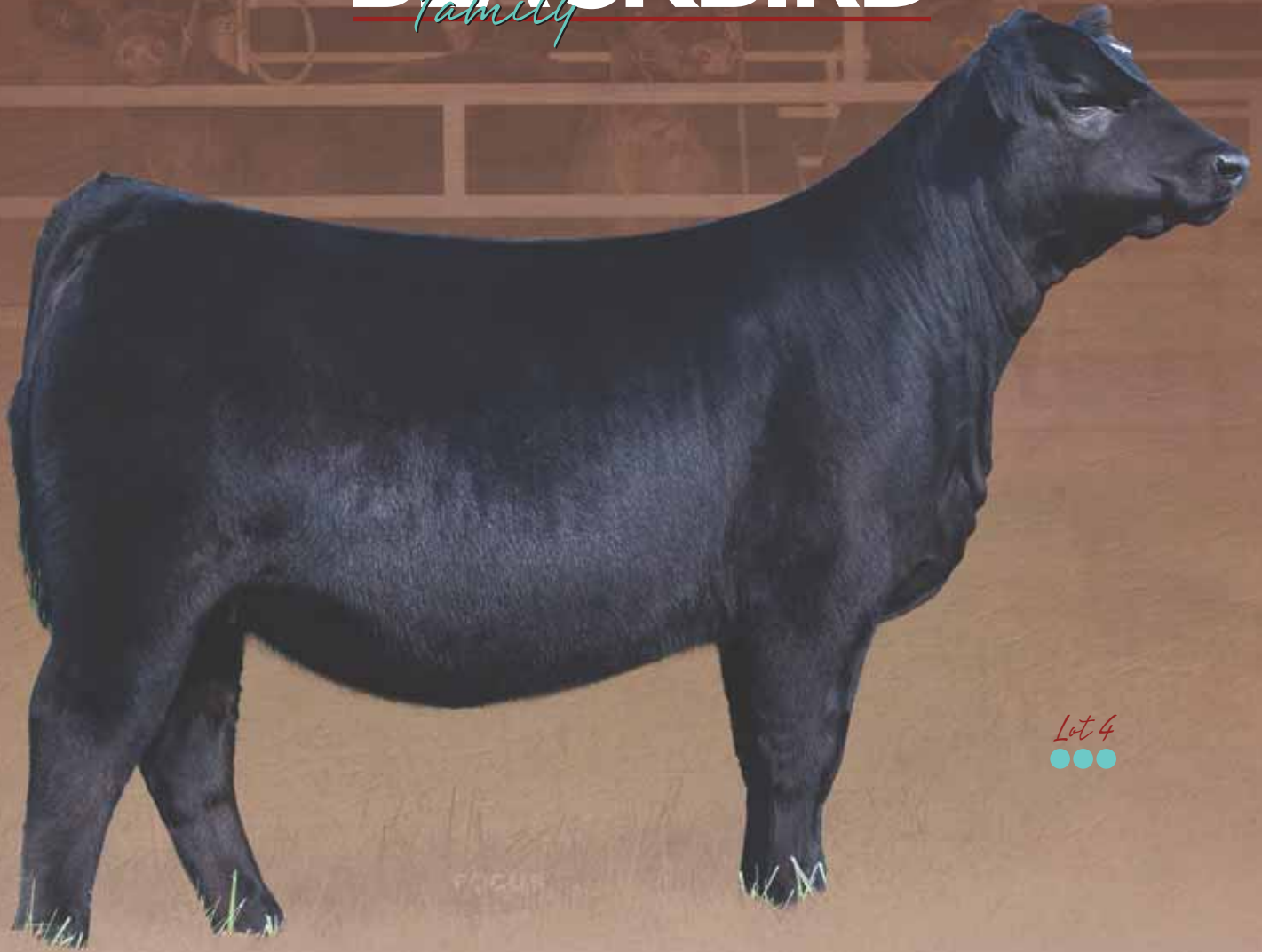
	BEPD	WEPD	YEPD	MILK	SC
EPDs	+3.3	+54	+96	+20	+219
PVF BLACKLIST 7077					
PVF MISSIE 5245					
C&C PRIORITY 1428B EXAR					
PVF MISSIE 0084					

Combining the exciting young sire, PVF Marvel 9185 with the winningest Missie female has produced a big-time contender in Lot 3. PVF Missie 4149, past National Junior Angus Show Grand Champion Female and National Western Stock Show Grand Champion Female for Esther McCabe, has produced more champions and sale toppers than any in the PVF program the last several years. 1055 has the look to catch any judge's eye, and the genetic power to produce for years to come.

Retaining half embryo interest.

BLACKBIRD

Family



Lot 4
●●●



The dam of Lot 4 is a full sister to the popular sire PVF The Natural 7042.



PVF Blackbird 8001, dam of Lot 4.



PVF Blackbird 8001, this Illinois Beef Expo Champion is the dam of Lot 4.

4 PVF BLACKBIRD 1004

[cow 20120775] [calved: 01.26.2021]

- PVF MARVEL 9185
- PVF BLACKBIRD 8001

	BEPD	WEPD	YEPD	MILK	SC
EPDs	+1.1	+52	+93	+25	+211
PVF BLACKLIST 7077					
PVF MISSIE 5245					
PVF INSIGHT 0129					
PVF BLACKBIRD 3127					

A farm favorite since birth, 1004 exhibits as much power as you could ever hope for in an Angus female, while still displaying a striking look. In addition to her tremendous stoutness and style this female adds the best genetics of the Blackbird cow family. Her dam, PVF Blackbird 8001, a many time champion for Ashton Dillow, is a full sister to PVF The Natural 7042, a sire whose limited availability has still resulted in many champions and sale toppers including the \$160,000 half interest high selling female in the history of PVF. Retaining half embryo interest.

MISSIE

Family



Lot 5
●●●



PVF Missie 5245, dam of Lots 5, 6 and 7.



PVF DLX Missie 0304, this 2021 Illinois State Fair Supreme Champion Female is a maternal sister to lots 5, 6 and 7.



Lot 6
●●●

lot **5** **PVF MISSIE 1042**

[cow +20120798] [calved: 03.06.2021]

	BEPD	WEPD	YEPD	MILK	SC
EPDs	+1.8	+61	+105	+22	+234

lot **6** **PVF DLX MISSIE 1301**

[cow 20120865] [calved: 03.11.2021]

	BEPD	WEPD	YEPD	MILK	SC
EPDs	+1.8	+60	+105	+22	+235

- PVF BLACKLIST 7077
- PVF MISSIE 5245

- PVF INSIGHT 0129
- PVF BLACKBIRD 3070
- C&C MCKINLEY 3000 EXAR
- PVF MISSIE 0084

True sale features, these two full sisters to PVF Marvel 9185 offer the quality to be competitive at all levels of competition with the pedigree to offer donor potential for any exhibitor. The dam of these females, PVF Missie 5245, is a daughter of the legendary donor PVF Missie 0084 and was a past NAILE and NWSS Division winner for Morgan Scilacci. She also produced PVF DLX Missie 0304, a feature of the 2020 PVF Fall Production Sale who went on to be Supreme Champion of the 2021 Illinois State Fair for Emma Eathington.

Retaining half embryo interest in lots 5 and 6.

Full Sisters to ...

PVF MARVEL 9185



PVF Marvel 9185, leased to Select Sires, Inc. is well on his way to becoming one of the most impactful sires ever produced at Prairie View Farms. Evidenced by his very first calves, which highlight this offering, he is destined to take his place as one of the leading sires of show ring champions in the Angus breed. He is a grandson of the influential PVF donor, PVF Missie 0084, and his dam, PVF Missie 5245 has proven one of the most powerful young donors in the PVF lineup and produced the Supreme Champion Female at the 2021 Illinois State Fair.

Additionally, the top side of his pedigree offers the power and show ring consistency of the Blackbird cow family. His flawless design, which blends tremendous rib shape, extra body, added dimension in his hip structure, and structural soundness, combine with a pedigree that will provide the ingredients to make him an impact sire for those looking for style in a beef bull.

lot **7** **PVF MISSIE 1080**

[cow 20120813] [calved: 05.07.2021]

	BEPD	WEPD	YEPD	MILK	SC
EPDs	+1.8	+60	+105	+22	+235

- PVF BLACKLIST 7077
- PVF MISSIE 5245

- PVF INSIGHT 0129
- PVF BLACKBIRD 3070
- C&C MCKINLEY 3000 EXAR
- PVF MISSIE 0084

Another full sister to PVF Marvel 9185 and PVF Reddington 9186, this is the first of a powerful set of May heifers to headline our offering. PVF Missie 1080 is a massive young heifer whose pedigree power dictates her best days are yet to come.



PRINCESS

Family



Lot 8
●●●



*T/R NFF Princess E307,
maternal sister to lots 8 and 9.*



Lot 9
●●●

lot **8** **PVF PRINCESS 1039**

[cow +20120796] [calved: 03.06.2021]

	BEPD	WEPD	YEPD	MILK	SC
EPDs	+2.1	+51	+92	+24	+212

lot **9** **PVF PRINCESS 1050**

[cow 20120800] [calved: 03.13.2021]

	BEPD	WEPD	YEPD	MILK	SC
EPDs	+2.1	+51	+92	+24	+212

- PVF MARVEL 9185
- EXAR PRINCESS 8063

- PVF BLACKLIST 7077
- PVF MISSIE 5245
- PVF INSIGHT 0129
- GREENS PRINCESS 1012

Two beautifully constructed daughters of PVF Marvel 9185, whose dam, EXAR Princess 8063, is a direct daughter of the past National Western Stock Show Grand Champion Female, Green's Princess 1012, and 8063 herself produced the 2019 Grand Champion Female.

Retaining half embryo interest in lot 8.

BLACKBIRD

Family



Lot 10
●●●



Lot 11
●●●



PVF Blackbird 7001, dam of lots 10 and 11.

lot **10** **PVF BLACKBIRD 1021**

[cow 20120788] [calved: 02.16.2021]

BEPD	WEPD	YEPD	MILK	SC
EPDs +4.1	+59	+102	+17	+203

lot **11** **PVF BLACKBIRD 1079**

[cow 20120812] [calved: 05.06.2021]

BEPD	WEPD	YEPD	MILK	SC
EPDs +2.8	+57	+98	+17	+200

- PVF MARVEL 9185
- PVF BLACKBIRD 7001

- PVF BLACKLIST 7077
- PVF MISSIE 5245
- COLBURN PRIMO 5153
- ALL PVF BLACKBIRD 645

Descending from the Blackbird cow family, the dam of these females is a direct daughter of the legendary ALL PVF Blackbird 645, whose many accomplishments include producing the 2017 National Junior Angus Show Grand Champion Female. The Blackbird cow family not only produces as many show winners as any but set themselves apart in their ability to produce impact genetics such as PVF Blacklist 7077 and PVF The Natural 7042, who are both sons of 645 daughters. Retaining half embryo interest in Lots 10 and 11.

BLACKBIRD

Family



PVF Blackbird 0253 - This Lot 1 Sale Heifer from our 2020 Fall Production Sale was Fifth Overall Supreme Female at the Indiana State Fair Junior Show and a maternal sib to lots 12 - 15.

Lot 12
●●●



PVF Blackbird 3070, dam of lots 12 - 15.



PVF Insight 0129, this timeless sire of champions is the sire of lots 12 - 15.

Lot 13
●●●



Lot 12 PVF BLACKBIRD 1041

[cow +20120797] [calved: 03.03.2021]

BE PD	WE PD	YE PD	MILK	SC
EPDs +2.9	+62	+105	+22	+215

Lot 13 PVF BLACKBIRD 1228

[cow 20120849] [calved: 02.14.2021]

BE PD	WE PD	YE PD	MILK	SC
EPDs +2.9	+62	+105	+22	+215

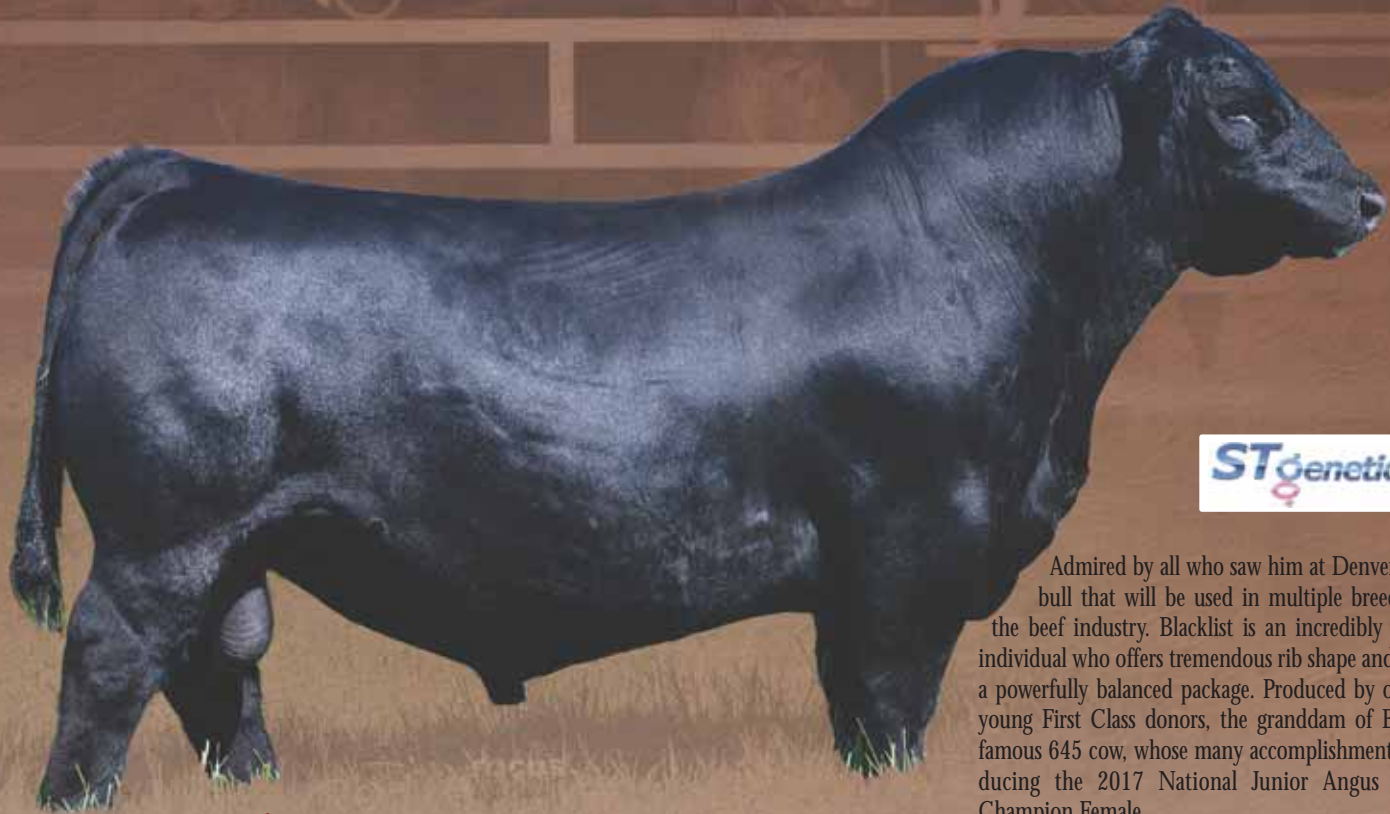
- PVF INSIGHT 0129
- PVF BLACKBIRD 3070

- SAV BRILLIANCE 8077
- PVF MISSIE 790
- DAMERON FIRST CLASS
- ALL PVF BLACKBIRD 645

Two powerful full sisters to PVF Blacklist 7077, these two females will have a lasting impact on any herd after their time in the ring is done. PVF Blackbird 3070 is most famous for her son, but has also produced numerous show champions, including Lot 1 of the 2020 PVF Fall Production Sale, who went on to be the Fifth Overall Supreme Champion at the Indiana State Fair for Rachel Streitmatter.

Full Sisters to ...

PVF BLACKLIST 7077



Admired by all who saw him at Denver, Blacklist is a bull that will be used in multiple breeds throughout the beef industry. Blacklist is an incredibly stout, athletic individual who offers tremendous rib shape and dimension in a powerfully balanced package. Produced by one of our top young First Class donors, the granddam of Blacklist is the famous 645 cow, whose many accomplishments include producing the 2017 National Junior Angus Show Grand Champion Female.

PVF Blacklist 7077



lot **14** **PVF BLACKBIRD 1230**

[cow 20120851] [calved: 02.17.2021]

	BEPD	WEPD	YEPD	MILK	SC
EPDs	+2.9	+62	+105	+22	+215

lot **15** **PVF BLACKBIRD 1236**

[cow 20120856] [calved: 02.19.2021]

	BEPD	WEPD	YEPD	MILK	SC
EPDs	+2.9	+62	+105	+22	+215

- PVF INSIGHT 0129
- PVF BLACKBIRD 3070

- SAV BRILLIANCE 8077
- PVF MISSIE 790
- DAMERON FIRST CLASS
- ALL PVF BLACKBIRD 645

Two more standout full sisters to PVF Blacklist 7077, these two offer as much show and donor potential as any in the sale. Not only are these two heifers outstanding phenotypic individuals but there are few cow families in the Angus breed who offer the ability to produce show champions and herd sires like the Blackbirds.



Lot 14



Lot 15



MISSIE

Family



Lot 16
●●●



PVF Missie 0084, dam of lots 16 and 17.

Lot 17
●●●



Lot 16 **PVF MISSIE 1203**

[cow 20120829] [calved: 01.17.2021]

	BEPD	WEPD	YEPD	MILK	SC
EPDs	+2.4	+48	+86	+20	+162

Lot 17 **PVF MISSIE 1204**

[cow 20120830] [calved: 01.18.2021]

	BEPD	WEPD	YEPD	MILK	SC
EPDs	+2.4	+48	+86	+20	+162

- COLBURN PRIMO 5153
- PVF MISSIE 0084

- DAMERON FIRST CLASS
- SILVEIRAS SARAS DREAM 1339
- SAV BISMARCK 5682
- PVF MISSIE 790

Combining the show ring dominance of Primo with the legendary PVF Missie 0084 provides elite show and production abilities in these two females. PVF Missie 0084 needs no introduction as she has anchored the Missie cow family's production of champions for the last decade of PVE. Her record of champions continues to accumulate and includes wins at all levels of competition. Retaining half embryo interest in lots 16 and 17.

MISSIE

Family



Lot 18



PVF Missie 5216, the National Junior Angus Show Reserve Grand Champion Female is the dam of lots 18 and 19.

Lot 19



lot 18 PVF MISSIE 1226

[cow 20120847] [calved: 02.13.2021]

	BEPD	WEPD	YEPD	MILK	SC
EPDs	+3.6	+57	+96	+13	+168

lot 19 PVF MISSIE 1239

[cow +*20128848] [calved: 02.21.2021]

	BEPD	WEPD	YEPD	MILK	SC
EPDs	+7.8	+64	+110	+12	+177

- COLBURN PRIMO 5153
- PVF MISSIE 5216

- DAMERON FIRST CLASS
- SILVEIRAS SARAS DREAM 1339
- C&C MCKINLEY 3000 EXAR
- PVF MISSIE 0084

Two full sisters from past National Junior Angus Show Reserve Grand Champion Female, PVF Missie 5216, for Cheyenne Jones. Not only do these heifers have all the quality needed to stand the toughest competition, but the 0084 descendants have proven to be powerful producers. PVF Missie 5216 is a full sister to PVF Missie 5245 whose many accomplishments include the potent young sires, PVF Marvel 9185 and PVF Reddington 9186. Retaining half embryo interest in lots 18 and 19.

MISSIE

Family



Lot 20



PVF Blacklist 7077, sire of lot 20.



PVF Missie 6228, this Reserve Grand National Western Stock Show Champion is the dam of lot 20.

20 PVF MISSIE 1232

[cow 20120853] [calved: 02.17.2021]

- PVF BLACKLIST 7077
- PVF MISSIE 6228

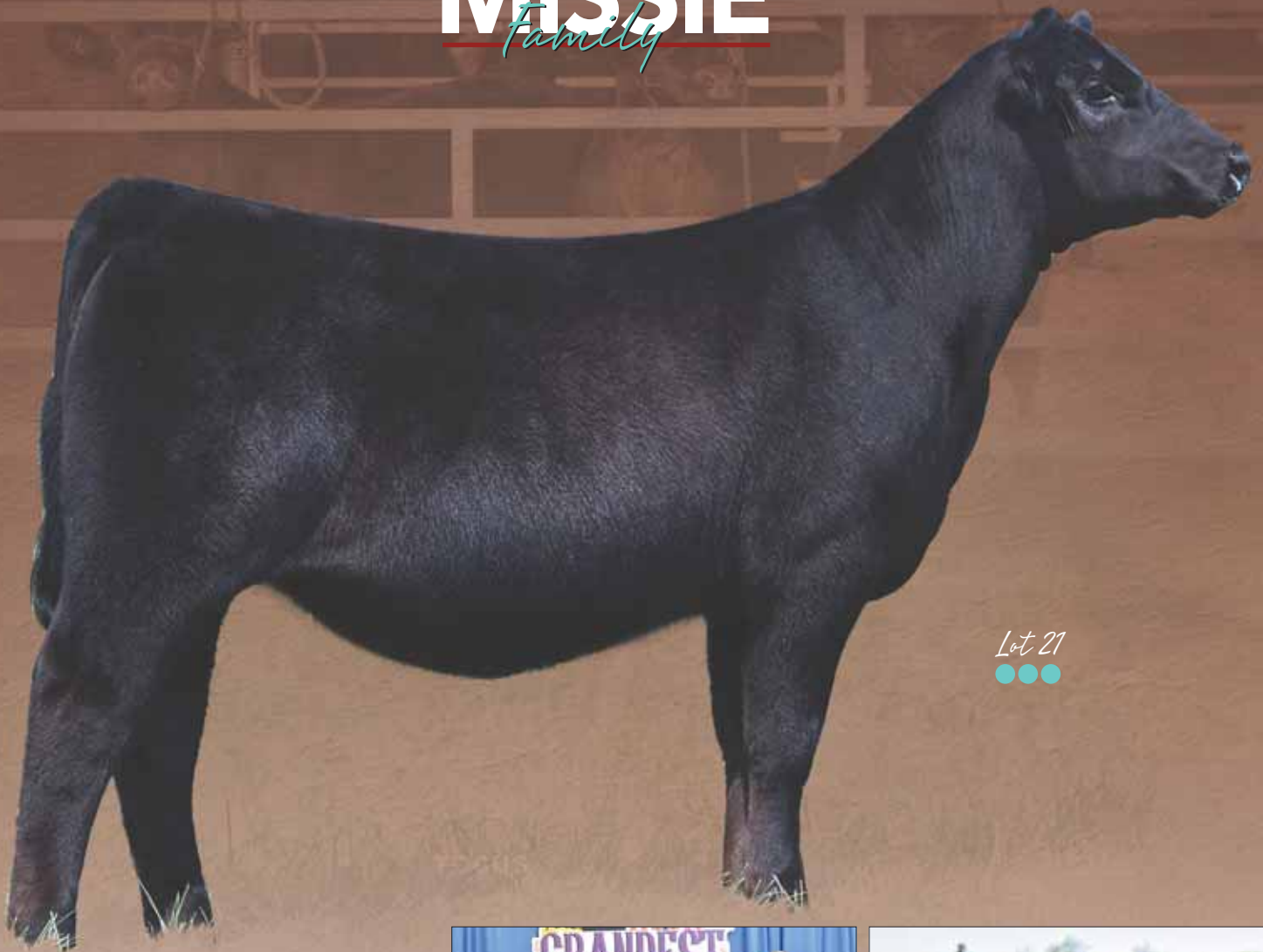
	BEPD	WEPD	YEPD	MILK	SC
EPDs	+3.9	+60	+101	+21	+204
PVF INSIGHT 0129					
PVF BLACKBIRD 3070					
C&C PRIORITY 1428B EXAR					
PVF MISSIE 790					

One of the truly standout females of this offering, this daughter of Blacklist is produced by PVF Missie 6228, a maternal sister to PVF Insight 0129, who was a past National Western Stock Show Reserve Grand Champion Female for Olivia Caldwell. 6228 herself not only had a successful show heifer career but is proving to be able to transmit those qualities to the next generation as her early embryo production has resulted in three division champions at the National Junior Angus Show. 6228 will be a mainstay in the donor pen for the PVF and Genflo programs for years to come.

Retaining half embryo interest in lot 20.

MISSIE

Family



Lot 21



PVF Missie 0122, Division Champion at the National Junior Angus Show for Ashlyn Mool is a full sister to Lot 21.



PVF Missie 6228, dam of lot 21.

21 PVF MISSIE 1220

[cow 20120842] [calved: 01.27.2021]

- KR CASINO 6243
- PVF MISSIE 6228

EPDs	BEPD	WEPD	YEPD	MILK	SC
+4.1	+57	+101	+30	+183	

CFCC BLACK JACK 001
MALSONS SAVANNAH 27Y
C&C PRIORITY 1428B EXAR
PVF MISSIE 790

A full sister to PVF Missie 0122, a feature of the 2021 PVF Spring Production Sale, who went on to be a popular division champion at the National Junior Angus Show for Ashlyn Mool. Combining the popular outcross power sire, KR Casino 6243, with PVF Missie 6228, the many time champion maternal sister to Insight, this female offers breed- leading potential in the show ring and after.

Retaining half embryo interest in Lot 21.

PVF INSIGHT 0129

Family Tree



GENEX



PVFBlacklist 7077

STgenetics



PVFThe Natural 7042

ABS
USA



PVFINauguration 6174

GENEX



PVFMarvel 9185

SE



PVFReddington 9186

ABS
USA



PVFKingpin 0058

ABS
USA

EMBRYO *Offering*

lot A **PVF MISSIE 4149 ~ 3 SEXED HEIFER IVF EMBRYOS**
Selling 1 package of three Sexed Heifer IVF embryos; guarantee of 1 pregnancy.

Choice of ...

PVF MARVEL 9185
STAG GOOD TIMES 201
KR CASINO 6243

C&C PRIORITY 1428B EXAR
PVF MISSIE 4149
PVF MISSIE 0084

DAMERON FIRST CLASS
EXAR PRINCESS 7879
S A V BISMARCK 5682
PVF MISSIE 790

Sibs to Champions

Donor dam, PVF Missie 4149



lot B **PVF MISSIE 5245 ~ 3 SEXED HEIFER IVF EMBRYOS**
Selling 1 package of three Sexed Heifer IVF embryos; guarantee of 1 pregnancy.

Sibs to Marvel

PVF BLACKLIST 7077
PVF MISSIE 5245

PVF INSIGHT 0129
PVF BLACKBIRD 3070
C&C MCKINLEY 3000 EXAR
PVF MISSIE 0084

*Donor dam,
PVF Missie 5245*



lot C **PVF BLACKBIRD 3070 ~ 3 SEXED HEIFER IVF EMBRYOS**
Selling 1 package of three Sexed Heifer IVF embryos; guarantee of 1 pregnancy.

Choice of ...

PVF MARVEL 9185
PVF THE NATURAL 7042

DAMERON FIRST CLASS
PVF BLACKBIRD 3070
ALL PVF BLACKBIRD 645

EXG RS FIRST RATE S903 R3
DAMERON NORTHERN MISS 3114
LEACHMAN SAUGAHATCHEE 3000C
P V F BLACKBIRD 201

Sibs to Blacklist

*Donor dam,
PVF Blackbird 3070*



lot D **PVF LUCY 4189 ~ 3 SEXED HEIFER IVF EMBRYOS**
Selling 1 package of three Sexed Heifer IVF embryos; guarantee of 1 pregnancy.

Choice of ...

STAG GOOD TIMES 201
PVF INSIGHT 0129

C&C PRIORITY 142B EXAR
PVF LUCY 4189
THOMAS LUCY 7360

DAMERON FIRST CLASS
EXAR PRINCESS 7879
S A V 8180 TRAVELER 004
THOMAS LUCY 4440

Sibs to Kingpin

Donor dam, PVF Lucy 4189



lot E **PVF BLACKBIRD 3127 ~ 3 SEXED HEIFER IVF EMBRYOS**
Selling 1 package of three Sexed Heifer IVF embryos; guarantee of 1 pregnancy.

Choice of ...

PVF MARVEL 9185
STAG GOOD TIMES 201
PVF BLACKLIST 7077

PVF WINDFALL SCC 9005
PVF BLACKBIRD 3127
ALL PVF BLACKBIRD 645

PVF ALL PAYDAY 729
DAMERON PVF PROVEN QUEEN 010
LEACHMAN SAUGAHATCHEE 3000C
PVF BLACKBIRD 201

Sibs to The Natural

Donor dam, PVF Blackbird 3127



REF STAG GOOD TIMES 201

[cow +*19923328] [calved: 03.03.2020]

SIRE: SCC SCH 24 KARAT 838 DAM: SCC SCH PHYLLIS 6104

EPDs	CED	BW	WW	YW	MILK	SM	SB	SC
+5	+2.1	+48	+86	+23	+31	+105	+167	

Added to the PVF Herd Bull Battery this Spring for his awe-inspiring look and a pedigree that is an out-cross for all of our top donors, STAG Good Times 201 saw heavy use in our program this spring and we eagerly anticipate his first offspring.

Owned with Griswold Cattle, Bob May and Stagemeyer Cattle.



MISSIE

Family



PVF Missie 6298, dam of lots 22 & 23.

Lot 22



PVF Reddington 9186, the sire of lot 23.



Lot 23



22 PVF MISSIE 1207

[cow 20120832] [calved: 01.22.2021]

BEPD	WEPD	YEPD	MILK	SC
EPDs +4.3	+53	+84	+13	+169

GATEWAY FOLLOW ME F163

PVF MISSIE 6298

C&C MCKINLEY 3000 EXAR
DUNK-W MAXINE HR 505C
C&C PRIORITY 1428B EXAR
PVF MISSIE 0084

A stunning daughter of Follow Me, PVF Missie 1207 offers unlimited show ring potential combined with the proven value of the Missie cow family. PVF Missie 6298 is a full sister to PVF Missie 4149 and was herself a many time champion for Victoria Gerken.

23 PVF MISSIE 1231

[cow 20120852] [calved: 02.17.2021]

BEPD	WEPD	YEPD	MILK	SC
EPDs +3.3	+56	+92	+21	+210

PVF REDDINGTON 9186

PVF MISSIE 6298

PVF BLACKLIST 7077
PVF MISSIE 5245
C&C PRIORITY 1428B EXAR
PVF MISSIE 0084

A standout daughter of the ABS sire, PVF Reddington 9186, this extra stout powerhouse is line bred to the best of the Missie cow family. Reddington is a full brother to PVF Marvel 9185, whose untimely death will make his genetics rare and highly sought after. Our limited first calf crop would indicate that he would add extra power and bone.

MISSIE

Family



PVF Missie 0140, the popular Lot 1 of our 2021 PVF Spring Production Sale is a full sister to Lot 24.



PVF The Natural 7042, sire of lot 24.



PVF Missie 4149, dam of lot 24.



Lot 24
●●●

24 PVF MISSIE 1210

[cow 20120835] [calved: 01.24.2021]

	BEPD	WEPD	YEPD	MILK	SC
EPDs	+3.8	+50	+83	+22	+185

- PVF THE NATURAL 7042
- PVF MISSIE 4149

PVF INSIGHT 0129
PVF BLACKBIRD 3127
C&C PRIORITY 1428B EXAR
PVF MISSIE 0084

Retaining half embryo interest in lot 24.

A full sister to the \$160,000 half interest featured Lot 1 of the 2021 PVF Spring Production Sale, this female offers some of the most valuable genetics ever produced at Prairie View Farms. With limited semen availability, The Natural has proven to be a consistent producer of extra eye appeal and when mated to the popular PVF Missie 4149, it's never missed.

25 PVF MISSIE 1218

[cow 20120841] [calved: 01.26.2021]

	BEPD	WEPD	YEPD	MILK	SC
EPDs	+4.3	+53	+89	+21	+190

- DAMERON FIRST CLASS
- PVF MISSIE 1148

EXG RS FIRST RATE S903 R3
DAMERON NORTHERN MISS 3114
PVF WINDFALL SCC 9005
PVF MISSIE 790



Lot 25
●●●



PVF Missie 1148, dam of lots 25 & 26.

Combining the rare and valuable genetics of Dameron First Class with this maternal sister to PVF Insight 0129 offers a pedigree stacked with the most Angus show ring dominance of the last decade.

26 PVF MISSIE 1234

[cow 20120854] [calved: 02.17.2021]

	BEPD	WEPD	YEPD	MILK	SC
EPDs	+3.3	+49	+89	+25	+225

- PVF MARVEL 9185
- PVF MISSIE 1148

PVF BLACKLIST 7077
PVF MISSIE 5245
PVF WINDFALL SCC 9005
PVF MISSIE 790



Lot 26
●●●



PVF Marvel 9185, sire of lot 26

The Marvel calves have been favorites of all who have stopped this fall, and this is one that is sure to grab your attention on sale night. Tracing back on both sides of her pedigree to the family that produced PVF Insight 0129, this heifer has PVF show ring champions all the way back.



PVF Blackcap 6313, this Fourth Overall National Junior Show Champion is a maternal sister to lot 27.



PVF Inauguration 6174, sire of lot 27.



PVF Blackcap 0148, Supreme Champion Female at the 2021 Tennessee State Fair is a full sib to Lot 27.

Lot 27
●●●

GENEX



PVF Missie 8246, another daughter of KR Casino 6243.



Lot 28
●●●

27 **PVF MISSIE 1212**

[cow +20120837] [calved: 01.25.2021]

EPDs	BEPD	WEPD	YEPD	MILK	SC
+3.9	+56	+98	+24	+193	

- PVF INAUGURATION 6174
- M C BLACKCAP 3057

- DAMERON FIRST CLASS
- PVF MISSIE 790
- S A V FIRST CLASS 0207
- M C BLACKCAP 7067

A full sister to one of the many success stories from the 2021 PVF Spring Production Sale, PVF Missie 0148 was recently named Supreme Champion of the 2021 Tennessee State Fair for Alli Perry. The Blackcap cow family was added to the PVF program for their ability to combine the look of a champion with an elite brood cow style. MC Blackcap 3057, the foundation of this family, also produced PVF Blackcap 6313, Fourth Overall Female of the 2018 National Junior Angus Show for Brynn Bullerman.

28 **PVF BLACKBIRD 1238**

[cow 20120858] [calved: 02.20.2021]

EPDs	BEPD	WEPD	YEPD	MILK	SC
+4.1	+54	+93	+25	+176	

- KR CASINO 6243
- PVF BLACKBIRD 4174

- CFCC BLACK JACK 001
- MALSONS SAVANNAH 27Y
- C & C PRIORITY 1428B EXAR
- ALL PVF BLACKBIRD 645

Descending from the Blackbird cow family, PVF Blackbird 4174 is a direct daughter of ALL PVF Blackbird 645, and a maternal sister to such elite producers of the dams of PVF Blacklist 7077 and PVF The Natural 7042. Adding the outcross genetics of KR Casino 6243, this female packages show ring power with true donor potential.



PVF Blackbird 3127, dam of lot 29.

Lot 29



PVF The Natural 7042, full sib to Lot 29.



PVF Reddington 9186, sire of lot 30.

Lot 30



29 **PVF BLACKBIRD 1213**

[cow 20120838] [calved: 01.25.2021]

	BEPD	WEPD	YEPD	MILK	SC
EPDs	+2.4	+56	+95	+24	+191

- PVF INSIGHT 0129
- PVF BLACKBIRD 3127

- SAV BRILLIANCE 8077
- PVF MISSIE 790
- PVF WINDFALL SCC 9005
- ALL PVF BLACKBIRD 645

30 **PVF PROVEN QUEEN 1019**

[cow 20120787] [calved: 02.11.2021]

	BEPD	WEPD	YEPD	MILK	SC
EPDs	+3.0	+54	+89	+23	+198

- PVF REDDINGTON 9186
- PVF PROVEN QUEEN 4109

- PVF BLACKLIST 7077
- PVF MISSIE 5245
- PVF INSIGHT 0129
- DAMERON PVF PROVEN QUEEN010

Offering long term value with a show ring look, this full sister to PVF The Natural 7042 is also a full sister to many top producers at PVF, including PVF Blackbird 8001 the donor dam of Lot 4 in this offering.

This daughter of the ABS sire PVF Reddington 9186, whose untimely death make his genetics hard to come by, is sure to be a favorite on sale night. She offers the mass, rib shape and dimension that the Proven Queen family has become known for with the extra look and balance that we find in Reddington's first calf crop.

MAY

Heifers



E/T Blackcap 304, dam of lots 31 and 32.

Lot 31
●●●



PVF Reddington 9186 sire of lots 31 and 32.

Lot 32
●●●



31 **PVF BLACKCAP 1082**
Lot [cow 20120815] [calved: 05.08.2021]

	BEPD	WEPD	YEPD	MILK	SC
EPDs	+2.6	+59	+101	+24	+219

32 **PVF BLACKBIRD 1091**
Lot [cow 20120823] [calved: 05.14.2021]

	BEPD	WEPD	YEPD	MILK	SC
EPDs	+2.6	+59	+101	+24	+219

{ PVF REDDINGTON 9186
E/T BLACKCAP 304

PVF BLACKLIST 7077
 PVF MISSIE 5245
 SAV MOMENTUM 9274
 E/T MELDON BLACKCAP 094

This pair of females offers a glimpse of the future at Prairie View Farms. E/T Blackcap 304 was added as the featured Lot 1 of the Elrod/Tolbert Sale, and herself displays incredible look, depth, mass, udder quality and soundness that we strive to build into our program.

MAY

Heifers



PVF Lucy 8225,
maternal sister to lot 33.



PVF Kingpin 0058,
maternal sibling to lot 33



PVF Lucy 4189,
dam of lot 33.

Lot 33
●●●



PVF Proven Queen 5094, dam of lot 34.



Lot 34
●●●

Lot 33 PVF LUCY 1095

[cow 20120825] [calved: 05.21.2021]

EPDs	BEPD	WEPD	YEPD	MILK	SC
+3.3	+45	+77	+27	+191	

- PVF THE NATURAL 7042
- PVF LUCY 4189

PVF INSIGHT 0129
PVF BLACKBIRD 3127
C&C PRIORITY 1428B EXAR
THOMAS LUCY 7360

Lot 34 PVF PROVEN QUEEN 1098

[cow 20120826] [calved: 05.29.2021]

EPDs	BEPD	WEPD	YEPD	MILK	SC
+3.7	+52	+88	+17	+156	

- CONLEY NO LIMIT
- PVF PROVEN QUEEN 5094

EXAR BLUE CHIP 1877B
SILVEIRAS S SIS SANDY 2355
PVF INSIGHT 0129
DAMERON PVF PROVEN QUEEN010

One of the youngest females in this offering, this maternal sister to Lot 1 in this offering is sure to only increase in value with age. Her sire has produced numerous National Junior Angus Show champions in this initial calf crop, and his dam has become one of the standouts of the Lucy cow family, producing such program greats, as the ABS sire, PVF Kingpin 0058, and the champion PVF Lucy 8225.

The youngest heifer in this offering, this daughter of the popular young sire, Conley No Limit is out of one of the most impressive Insight daughters on the farm. PVF Proven Queen 5094 is one of several full sisters who carry on the legacy of champion producers from a Proven Queen cow family.

PROVEN QUEEN

Family



PVF Proven Queen 5250, dam of lots 35 and 36.

Lot 35
●●●



PVF Proven Queen 8256, this many time champion and now PVF donor is a full sibling to lot 36.



Lot 36
●●●



35 PVF PROVEN QUEEN 1059

[cow 20120805] [calved: 04.04.2021]

	BEPD	WEPD	YEPD	MILK	SC
EPDs	+4.1	+52	+83	+19	+173

- PVF THE NATURAL 7042
- PVF PROVEN QUEEN 5250

- PVF INSIGHT 0129
- PVF BLACKBIRD 3127
- C&C MCKINLEY 3000 EXAR
- PVF PROVEN QUEEN 2108

36 PVF PROVEN QUEEN 1067

[cow 20120809] [calved: 04.12.2021]

	BEPD	WEPD	YEPD	MILK	SC
EPDs	+3.4	+57	+96	+16	+195

- PVF INSIGHT 0129
- PVF PROVEN QUEEN 5250

- SAV BRILLIANCE 8077
- PVF MISSIE 790
- C&C MCKINLEY 3000 EXAR
- PVF PROVEN QUEEN 2108

Combining the best of the Blackbird and Proven Queen cow families, this April heifer prospect has the extreme look The Natural transmits to all his offspring, with the extra thickness and power from the Proven Queen cow family. Her dam, PVF Proven Queen 5250, was a many time champion for Korey Moser, including Reserve Grand Champion Female at the Atlantic National.

A full sister to the Reserve Grand Champion of the 2019 North American International Livestock Exposition for Cameron Choate this powerful April heifer calf is line bred to PVF Insight 0129, the most potent herd sire ever produced at Prairie View Farms.

PROVEN QUEEN

Family



PVF Blacklist 7077, sire of lot 37.

Lot 37
●●●



PVF Proven Queen 4032, dam of lot 38.



Lot 38
●●●

Lot 37 PVF PROVEN QUEEN 1246

[cow 20120863] [calved: 03.21.2021]

EPDs	BEPD	WEPD	YEPD	MILK	SC
+3.8	+57	+97	+122	+179	

- PVF BLACKLIST 7077
- PVF PROVEN QUEEN 2157

- PVF INSIGHT 0129
- PVF BLACKBIRD 3070
- DAMERON FIRST CLASS
- PVF PROVEN QUEEN 602

Lot 38 PVF PROVEN QUEEN 1014

[cow 20120782] [calved: 02.07.2021]

EPDs	BEPD	WEPD	YEPD	MILK	SC
+3.1	+61	+109	+24	+234	

- PVF MARVEL 9185
- PVF PROVEN QUEEN 4032

- PVF BLACKLIST 7077
- PVF MISSIE 5245
- PVF INSIGHT 0129
- PVF PROVEN QUEEN 2106

A striking look with added power and thickness, this Blacklist daughter is produced by a direct daughter of the famous PVF Proven Queen 602, the foundation of this cow family at Prairie View Farms.

One of the many Marvel daughters to turn visitors heads this fall, this female offers tremendous length and extension with added bone and foot size. A direct daughter of PVF Proven Queen 4032, whose many accomplishments in the donor pen including producing the popular calving ease sire PVF TCF Frozen 6078, the 2017 National Junior Angus Show Grand Champion Bull for Amelia.



PVF Blackbird 9044, dam of lot 39.

Lot 39
●●●



WB PVF Lucy 1052, dam of lot 40.

Lot 40
●●●



39 **PVF BLACKBIRD 1015**
 [cow 20120783] [calved: 02.09.2021]

	BEPD	WEPD	YEPD	MILK	SC
EPDs	+2.9	+67	+110	+22	+196

SAV BRILLIANCE 8077
 PVF MISSIE 790
 DAMERON FIRST CLASS
 PVF BLACKBIRD 3127

{ PVF INSIGHT 0129
 PVF BLACKBIRD 9044

40 **PVF LUCY 1008**
 [cow 20120777] [calved: 01.31.2021]

	BEPD	WEPD	YEPD	MILK	SC
EPDs	+4.6	+56	+104	+28	+235

PVF MARVEL 9185
 PVF BLACKLIST 7077
 PVF MISSIE 5245
 PVF WINDFALL SCC 9005
 THOMAS LUCY 7360

{ WB PVF LUCY 1052

Exemplifying the quality and consistency that has made Insight famous, 1015 has been an eye catcher since birth. Her donor dam is a maternal sister to PVF The Natural 7042 and is sure to be a feature of the Blackbird cow family and the future of PVF.

A product of the Lucy cow family, this hidden gem in the sale offering has exceeded all our expectations since weaning. She offers the exciting new genetics of PVF Marvel 9185 combined with the tried-and-true productivity of the Lucy cow family.

Lot 41

PVF BLACKBIRD 1235

[cow 20120855] [calved: 02.18.2021]

BEPD	WEPD	YEPD	MILK	SC
EPDs +3.5	+48	+81	+19	+189

C&C PRIORITY 1428B EXAR

PVF BLACKBIRD 7113

DAMERON FIRST CLASS
EXAR PRINCESS 7879
PVF INSIGHT 0129
PVF BLACKBIRD 3127

Combining C&C Priority 1428B, sire of the \$95,000 lead off heifer of the 2020 Fall Production Sale, with PVF Blackbird 7113, a full sister to PVF The Natural 7042. 7113 was a past Third Overall Heifer of the Illinois State Fair for Olivia Caldwell.



PVF Blackbird 7113, dam of Lot 41.



Lot 42

PVF PROVEN QUEEN 1037

[cow 20120795] [calved: 02.28.2021]

BEPD	WEPD	YEPD	MILK	SC
EPDs +2.9	+59	+98	+25	+209

PVF INSIGHT 0129

PVF PROVEN QUEEN 7006

SAV BRILLIANCE 8077
PVF MISSIE 790
PVF SURVEILLANCE 4129
PVF PROVEN QUEEN 2108

This no-holes female offers the great cow look Insight has become famous for along with the donor potential offered by the Proven Queen cow family. This heifer's dam, PVF Proven Queen 7006, is one of the most eye-catching young cows to roam our pastures.



PVF Insight 0129, sire of lot 42.



Lot 43

PVF PRINCESS 1214

[cow 20120839] [calved: 01.26.2021]

BEPD	WEPD	YEPD	MILK	SC
EPDs +3.7	+57	+92	+19	+187

LAZY JB EDGE 8745

EXAR PRINCESS 8063

EXAR CLASSEN 1422B
DPL SANDY 3040
PVF INSIGHT 0129
GREENS PRINCESS 1012

Combining the many time champion Lazy JB Edge 8745 with the Princess cow family produces an eye-catching female with tons of show ring potential. Her dam, EXAR Princess 8063, descends from the Princess cow family who has produced countless champions for Express Ranches, and she herself produced the Grand Champion Female at the 2019 National Western Stock Show.



T/R NFF Princess E307, maternal sib to lot 43.



PRODUCTION SALE

BRED Females



PVF The Natural 7042, maternal sib to lot 44.



lot 44 PVF BLACKBIRD 0226

[cow *19800285] [calved: 02.16.2020]

EPDs	BEPD	WEPD	YEPD	MILK	SC
+5.2	+64	+99	+18	+142	

DAMERON FIRST CLASS
PVF BLACKBIRD 3127

EXG RS FIRST RATE S903 R3
DAMERON NORTHERN MISS 3114
PVF WINDFALL SCC 9005
ALL PVF BLACKBIRD 645

Due to calve 02.19.22 to Connealy Common Ground.

Leading off the bred heifer division with a phenotypically outstanding maternal sister to PVF The Natural 7042, this female is sure to carry on the productive ways of the Blackbird cow family. In addition to The Natural, PVF Blackbird 3127's list of breeding accomplishments is extensive, including PVF Blackbird 8001, the many time champion for Ashton Dillow, who produced Lot 4 of the heifer calf offering. The rare and valuable genetics of Dameron First Class need no introduction.



PVF Blackbird 3127, dam of lots 44 & 45.



lot 45 PVF BLACKBIRD 0212

[cow *19813376] [calved: 01.27.2020]

EPDs	BEPD	WEPD	YEPD	MILK	SC
+3.4	+60	+100	+24	+186	

PVF BLACKLIST 7077
PVF BLACKBIRD 3127

PVF INSIGHT 0129
PVF BLACKBIRD 3070
PVF WINDFALL SCC 9005
ALL PVF BLACKBIRD 645

Due to calve 02.17.2022 to Connealy Common Ground.

Line bred to the Blackbird cow family; this female combines the best of PVF's breeding program throughout her pedigree. Maternal sisters to this female have accumulated many champions including PVF Blackbird 0207, Grand Champion Bred and Owned Female at the All-American Angus Breeder's Futurity for Amelia.



PVF Blackbird 3070, dam of lot 46.



lot 46 PVF BLACKBIRD 0053

[cow *19812043] [calved: 03.06.2020]

EPDs	BEPD	WEPD	YEPD	MILK	SC
+4.3	+70	+125	+21	+229	

WB PENDLETON 708 PVF SWSN
PVF BLACKBIRD 3070

DAMERON BEST IN CLASS
WB PVF SF LUCY 4033
DAMERON FIRST CLASS
ALL PVF BLACKBIRD 645

Due to calve 02.21.2022 to Connealy Common Ground.

A sale feature, this heifer is a maternal sister to PVF Blacklist 7077, by the past National Western Stock Show Grand Champion Bull WB Pendleton 708 PVF SWSN, whose first calf crop include the Grand Champion Female at the first Cattleman's Congress. This female offers extra power and performance with the look and pedigree to produce champions.

REF CONNEALY COMMON GROUND

[cow *19829219] [calved: 11.07.2019]

SIRE: K C F BENNETT HOMESTEAD DAM: JAYZEE OF CONANGA 85P

EPDs	CED	BW	WW	YW	MILK	SM	SB	SC
+14	-0.6	+73	+143	+34	+73	+205	+339	

A bull sure to live up to his name, Connealy Common Ground was added as our pick of the Spring 2021 Connealy bull sale. He has the look, style and balance, combined with the EPD package to produce offspring that add value whether your goals are show or production oriented. You will find we have enough confidence in this young sire that nearly every bred heifer in this offering carries his service. Owned with Deer Valley Farms and Select Sires.



BRED Females

47 PVF DLX MISSIE 0305

[cow *19813390] [calved: 02.12.2020]

	BEPD	WEPD	YEPD	MILK	SC
EPDs	-0.6	+41	+79	+26	+210
	PVF INSIGHT 0129				
	PVF BLACKBIRD 3127				
	C&C MCKINLEY 3000 EXAR				
	PVF MISSIE 0084				

PVF THE NATURAL 7042

PVF MISSIE 5245

Due to calve 02.26.2022 to Connealy Common Ground. A highlight of this sale offering is this full sister to the Supreme Champion Female of the Illinois State Fair Junior Heifer Show shown by Emma Eathington. This heifer offers an incredible look through her front end with a massive rib shape and exceptional inner-soundness, and is sure to carry on the Missie legacy of producing champions.



PVF Missie 0304, full sister to lot 47.



48 PVF MISSIE 0010

[cow *19810832] [calved: 01.28.2020]

	BEPD	WEPD	YEPD	MILK	SC
EPDs	+4.0	+73	+131	+32	+216
	DAMERON BEST IN CLASS				
	WB PVF SF LUCY 4033				
	C&C MCKINLEY 3000 EXAR				
	PVF MISSIE 0084				

WB PENDLETON 708 PVF SWSN

PVF MISSIE 5245

Due to calve 02.02.2022 to Connealy Common Ground. The most powerful, high performing bred heifer in this offering, this daughter of the National Western Stock Show Champion WB Pendleton 708 PVF SWSN, is a maternal sister to PVF Marvel 9185, whose first progeny are highlighted throughout this sale offering. This female offers extra size and scale in a balanced, attractive package.



PVF Marvel 9185, maternal brother to lots 47, 48 & 49.



49 PVF MISSIE 0016

[cow *19810838] [calved: 01.31.2020]

	BEPD	WEPD	YEPD	MILK	SC
EPDs	-2.3	+50	+85	+24	+253
	PLATTEMERE WEIGH UP K360				
	STEVENSON PRIDE I167X				
	C&C MCKINLEY 3000 EXAR				
	PVF MISSIE 0084				

STEVENSON TURNING POINT

PVF MISSIE 5245

Due to calve 02.18.2022 to Connealy Common Ground. A moderately framed, massively built beautiful young cow prospect that offers extra calving ease genetics in this beautiful maternal sister to the Select Sires standout PVF Marvel 9185 and the ABS sensation PVF Reddington 9186. Offspring of PVF Missie 5245 have not only been standout AI sires, but have also excelled at every level of competition including the Supreme Champion of the 2021 Illinois State Fair.



PVF Reddington 9186, maternal brother to lots 47, 48 & 49.



ITION SALE

BRED

Females



lot **50**

PVF MISSIE 0234

[cow 19958067] [calved: 03.02.2020]

BE PD	WE PD	YE PD	MILK	SC
EPDs +2.4	+48	+86	+20	+162

COLBURN PRIMO 5153

PVF MISSIE 0084

DAMERON FIRST CLASS
SILVEIRAS SARAS DREAM 1339
SAV BISMARCK 5682
PVF MISSIE 790

Due to calve 02.19.22 to Connealy Common Ground.

Daughters of PVF Missie 0084 need no introduction as they have topped sales and won shows for the last eight years for PVF. Maternal sisters to this female include a past National Junior Angus Show Grand and Reserve Grand Champion Female as well as champions at all levels of competition. This daughter of the elite show ring sire Colburn Primo 5153 offers extra eye appeal and style that will sure carry on the Missie tradition.

PVF Missie 0084 dam of lot 50.



lot **51**

PVF PROVEN QUEEN 0073

[cow *19812982] [calved: 04.01.2020]

BE PD	WE PD	YE PD	MILK	SC
EPDs +4.8	+66	+110	+26	+223

PVF INSIGHT 0129

PVF PROVEN QUEEN 7006

SAV BRILLIANCE 8077
PVF MISSIE 790
PVF SURVEILLANCE 4129
PVF PROVEN QUEEN 2108

Due to calve 03.05.2022 to Connealy Common Ground.

Daughters of PVF Insight 0129 continue to make their mark as champions at every level of competition then go on to prove to be elite producers as well. The dam of this female is by the outstanding maternal sire PVF Surveillance 4129 is one of the most phenotypically outstanding cows in our pasture.

PVF Insight 0129, sire of lots 51 & 52.



lot **52**

PVF PROVEN QUEEN 0007

[cow *19810829] [calved: 01.26.2020]

BE PD	WE PD	YE PD	MILK	SC
EPDs -0.7	+36	+58	+28	+166

PVF INSIGHT 0129

PVF PROVEN QUEEN 5180

SAV BRILLIANCE 8077
PVF MISSIE 790
ELLINGSON SALUTE 3170
PVF PROVEN QUEEN 3175

Due to calve 03.10.2022 to Connealy Common Ground.

Another stout, massive, huge-bodied bred heifer that exemplifies all the traits that have made PVF Insight 0129 famous, tracing back to the many time champion PVF Proven Queen 3175 for Esther McCabe, this female offers an outstanding cow look with a disposition that anyone would love to own.

BRED Females

Lot **53**

PVF PROVEN QUEEN 0047

[cow *19800104] [calved: 03.05.2020]

BEPD	WEPD	YEPD	MILK	SC
EPDs +2.6	+70	+115	+19	+248

PVF BLACKLIST 7077

PVF PROVEN QUEEN 6150

PVF INSIGHT 0129
PVF BLACKBIRD 3070
PVF INSIGHT 0129
PVF PROVEN QUEEN 3033

Due to calve 03.27.2022 to Schiefelbein Warranty.

Line bred to Insight, and from the Proven Queen cow family, this daughter of the ST Genetics sire PVF Blacklist 7077 offers as much power and stoutness as any female in the sale. Her dam, PVF Proven Queen 6150 was a many time champion for Madelyn Gerken, including Reserve Division at the North American International Livestock Exposition and the National Western Stock Show.



*PVF Proven Queen 6150,
dam of Lot 53.*



Lot **54**

PVF PROVEN QUEEN 0239

[cow *19813385] [calved: 03.04.2020]

BEPD	WEPD	YEPD	MILK	SC
EPDs +3.5	+64	+108	+18	+175

PVF BLACKLIST 7077

PVF PROVEN QUEEN 2157

PVF INSIGHT 0129
PVF BLACKBIRD 3070
DAMERON FIRST CLASS
PVF PROVEN QUEEN 602

Due to calve 02.26.2022 to Connealy Common Ground.

Another powerhouse daughter for PVF Blacklist 7077 whose dam is a direct daughter of the legendary PVF Proven Queen 602, who proved to be the foundation of the Proven Queen family at PVF and whose daughters show and sale accomplishments are too numerous to mention.



*PVF Blacklist 7077,
sire of lots 53, 54 and 55.*



Lot **55**

PVF MISSIE 0029

[cow *19810844] [calved: 02.17.2020]

BEPD	WEPD	YEPD	MILK	SC
EPDs +2.3	+59	+102	+29	+214

PVF BLACKLIST 7077

PVF MISSIE 5210

PVF INSIGHT 0129
PVF BLACKBIRD 3070
C&C MCKINLEY 3000 EXAR
PVF MISSIE 0084

Due to calve 02.26.2022 to Connealy Common Ground.

This daughter of PVF Blacklist 7077 was produced by a full sister of PVF Missie 5216 Reserve Grand Champion Heifer of the 2016 National Junior Angus Show and Reserve Champion ROV Show Heifer of the Year for Cheyenne Jones.



BRED

Females



Lot **56**

PVF MISSIE 0206

[cow +*19797653] [calved: 01.17.2020]

BEPD	WEPD	YEPD	MILK	SC
EPDs +7.1	+67	+112	+28	+210

- PVF INAUGURATION 6174
- PVF MISSIE 6311

DAMERON FIRST CLASS
 PVF MISSIE 790
 PVF SURVEILLANCE 4129
 PVF MISSIE 0084

Due to calve 02.21.2022 to Connealy Common Ground.
 Produced by the Genex sire PVF Inauguration 6174, who was a maternal brother to PVF Insight 0129. the dam of this female may be the greatest Surveillance daughter to date. Combining the show ring dominance of the Missie cow family on both sides of the pedigree is sure to provide the cow prospect that will add value to any herd.



*PVF Missie 6311,
dam of Lot 56.*



Lot **57**

PVF BLACKBIRD 0210

[cow +*19810626] [calved: 01.24.2020]

BEPD	WEPD	YEPD	MILK	SC
EPDs +5.2	+73	+125	+16	+208

- WB PENDLETON 708 PVF SWSN
- PVF BLACKBIRD 7001

DAMERON BEST IN CLASS
 WB PVF SF LUCY 4033
 COLBURN PRIMO 5153
 ALL PVF BLACKBIRD 645

Due to calve 02.17.2022 to Connealy Common Ground.
 Pendleton's first calf crop included many champions including Grand Champion at the 2021 Cattlemens Congress. The dam of this female is a direct daughter of the show ring sire of champions, Colburn Primo 5153, and the foundation Blackbird 645 cow, whose daughters include the dams of PVF Blacklist 7077 and PVF The Natural 7042.



*PVF Blackbird 7001,
dam of lot 57.*



Lot **58**

PVF PROVEN QUEEN 0064

[cow *19812051] [calved: 03.21.2020]

BEPD	WEPD	YEPD	MILK	SC
EPDs +2.5	+50	+85	+27	+200

- PVF SURVEILLANCE 4129
- PVF PROVEN QUEEN 5094

BC LOOKOUT 7024
 PVF ELLEN 9100
 PVF INSIGHT 0129
 DAMERON PVF PROVEN QUEEN010

Due to calve 03.10.2022 to Connealy Common Ground.
 Surveillance daughters have been among the best young females at Prairie View and this descendant of the Proven Queen cow family is sure to follow. The dam of this heifer, PVF Proven Queen 5094, is a direct daughter of the famous PVF Proven Queen 010 and is a full sister to numerous champions at the National Junior Angus Show.



*PVF Surveillance 4129,
sire of lot 58.*

PVF FALL

BRED Females

59 PVF PROVEN QUEEN 0229

[cow +*19813382] [calved: 02.26.2020]

	BEPD	WEPD	YEPD	MILK	SC
EPDs	+5.2	+56	+77	+13	+147

- PVF SURVEILLANCE 4129 BC LOOKOUT 7024
PVF ELLEN 9100
- PVF PROVEN QUEEN 2108 PVF INSIGHT 0129
DAMERON PVF PROVEN QUEEN010

Due to calve 02.19.2022 to Sitz Stellar 726D.

A direct daughter of PVF Surveillance 4129, we have three full sisters to this bred heifer working in our herd and they are amongst our favorites. The dam of this female, PVF Proven Queen 2108, was a past National Junior Angus Show division champion who transmitted more bone, muscle, and power than maybe any female in our history.



PVF Proven Queen 2108, dam of lot 59.



60 PVF MISSIE 0247

[cow +*19813387] [calved: 03.24.2020]

	BEPD	WEPD	YEPD	MILK	SC
EPDs	+4.6	+63	+100	+17	+167

- PVF THE NATURAL 7042 PVF INSIGHT 0129
PVF BLACKBIRD 3127
- PVF MISSIE 3078 DAMERON FIRST CLASS
PVF MISSIE 790

Due to calve 02.07.2022 to Connealy Common Ground.

A full sister to the high selling female of the 2020 PVF Spring Production Sale, this daughter of PVF The Natural 7042 is produced by the past National Junior Angus Show division champion PVF Missie 3078, who is also a maternal sister to PVF Insight 0129.



PVF Missie 3078, dam of lot 60.



61 PVF MISSIE 0248

[cow 20128849] [calved: 03.24.2020]

	BEPD	WEPD	YEPD	MILK	SC
EPDs	+3.3	+54	+84	+23	+184

- PVF THE NATURAL 7042 PVF INSIGHT 0129
PVF BLACKBIRD 3127
- PVF MISSIE 3078 DAMERON FIRST CLASS
PVF MISSIE 790

Due to calve 04.05.2022 to Schiefelbein Warranty.

A hidden gem -- this Missie is a full sister to Lot 1 from the 2020 Fall PVF Production Sale, who went on to be the Fifth Overall Female at the Indiana State Fair for Rachel Streitmatter. By PVF The Natural 7042, from the dam of Blacklist, this bred heifer is line bred to the Blackbird cow family with added style to go with the power the Blackbirds are known for.



PVF Blackbird 0253, full sister to lot 61.



62 PVF PROVEN QUEEN 0238

[cow +*19890219] [calved: 03.04.2020]

	BEPD	WEPD	YEPD	MILK	SC
EPDs	+1.8	+47	+71	+22	+141

- TGM COMPTON 1738 SILVEIRAS STYLE 9303
DAMERON NORTHERN MISS 3198
- PVF PROVEN QUEEN 4032 PVF INSIGHT 0129
PVF PROVEN QUEEN 2106

Due to calve 02.07.2022 to Connealy Common Ground.

Making his mark at the 2021 National Junior Angus Show, TGM Compton 1738 sired champions in the owned and bred and owned division. The dam of this female, PVF Proven Queen 4032, is another outstanding Insight donor who has produced numerous champions for Amelia's bred and owned show string, as well as three daughters averaged over \$25,000 in our PVF 2021 Spring Production Sale.



PVF Proven Queen 4032, dam of lot 62.





ALAN & THERESA MILLER, 217.840.6935 | pvfangus@gmail.com

BRANDON & CATHY JONES, 309.370.1081

KYLE CHRISLAW, 608.751.9640 | CURTIS HARSH, 740.272.0339

DREW GILBERT, 309.433.4402

The background of the lower half of the image is a photograph of several cows silhouetted against a bright sunset. The sun is low on the horizon, creating a warm, golden glow. The cows are in the foreground, and their dark shapes contrast sharply with the bright sky.

FALL PRODUCTION SALE

Second Annual

Friday Night, October 1, 2021

6:30 p.m. | at the farm | Gridley, Illinois | Or watch Live on CCI.Live